



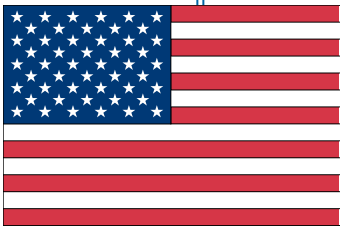
Orthopaedic Devices, Foot & Ankle Products

Preventive, Postoperative, Off-loading, Wound Care



DARCO International Locations

Celebrating over 25 years as a global leader in the design, manufacture and distribution of innovative products for the foot and ankle community.



United States

DARCO International, Inc.
810 Memorial Blvd.
Huntington, WV 25701 USA
Toll-Free: 800-999-8866
Voice: 304-522-4883
Fax: 304-522-0037
www.darcointernational.com



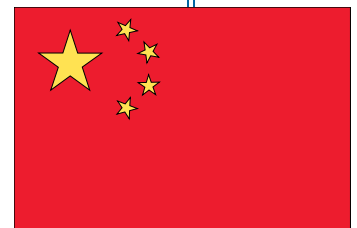
Europe

DARCO (Europe) GmbH
Gewerbegebiet 18
c Raisting, Germany
Voice: +49(0)8807-9228-0
Fax: +49(0)8807-9228-22
www.darco.de



DARCO Medical India Pvt. Ltd.

32A1B1/A1, First floor,
Vaibhav Complex
Opp to District Court, P.B Road
Dharwad - 580 008,
Karnataka, India
Voice: +91-836-2 74 74 46
Fax +91-836-2 44 44 32
www.darco.in



Asia

DARCO Int'l Trading (Shanghai) LTD.
3458 Humin Rd, Build 128
Shanghai 201108 China
Voice: 86-21-6489-2863
Fax: 86-21-6489-2449
www.darco-china.com.cn

Table of Contents



Postoperative Care

- | | | |
|---|---|---|
| 7 | MedSurg™
Original MedSurg™ | OrthoWedge® |
| 8 | Softie™ Shoe
APB™ - All Purpose Boot | 10 Body Armor® Toe Guard
TAS™ - Toe Alignment Splint |
| 9 | HeelWedge™ | 11 GTS™ - Great Toe Splint |



Trauma Care / Walkers / Cast Shoes

- | | | |
|----|------------------------------------|--|
| 13 | Body Armor® Cast Shoe
SlimLine™ | 15 Body Armor® Walker
Body Armor® Walker II |
| 14 | FXPro™
Air Traveler™ | |



Off-loading and Wound Care

- | | | |
|----|--|----------------------------|
| 17 | PegAssist™ Insole
WCS™ - Wound Care Shoe System | 19 MedSurg™
GentleStep™ |
| 18 | HeelWedge™
OrthoWedge® | |



Plantar Fasciitis Products

- | | |
|----|--|
| 21 | Pneumatic Night Splint
Body Armor® Night Splint |
| 22 | DCS™ - Plantar Fasciitis Sleeve |

Ankle Supports

- | | |
|----|--|
| 25 | Body Armor® Vario
Body Armor® Sport |
| 26 | Web™ Ankle Brace |



Kinesiology Tape

- | | |
|----|--------------------|
| 29 | DARCO Elastic Tape |
|----|--------------------|



Orthotic Insoles

- | | |
|----|-----------------|
| 31 | ProMotion™ Plus |
|----|-----------------|



Pediatric Products

- | | |
|----|---|
| 33 | Pediatric MedSurg™
Pediatric Original MedSurg™ |
| 34 | Pediatric SlimLine™ |

Diagnostic Products

- | | |
|----|--|
| 35 | MonoTemp™
FootFilament™
Goniometer |
|----|--|

DARCO Product Quick Guide



Indications	Air Traveler™	APB™ - All Purpose Boot	Body Armor® Cast Shoe	DARCO Elastic Tape	Body Armor® Night Splint	Body Armor® Sport	Body Armor® Toe Guard
Postoperative Healing	✓	✓					✓
Trauma Care	✓					✓	✓
Fracture	✓		✓				
Sprains	✓			✓		✓	
Weak Ankles				✓		✓	
Plantar Fasciitis				✓	✓		
Wound/Ulcer Off-loading		✓					
Presence of K-Wires		✓					✓
Cast Protection			✓				
Large Dressings		✓	✓				
Diabetic Foot/Neuropathy							✓
All Weather Protection		✓	✓				
Foot Pain							
Suggested HCPCS code	L4360				L4396	L1906	
Pages	14	8	13	29	21	25	10



Indications	Body Armor® Vario	Body Armor® Walker	Body Armor® Walker II	DCS™ - Plantar Fasciitis Sleeve	FXPro™	GentleStep™	GTS™ - Great Toe Splint
Postoperative Healing	✓	✓	✓		✓		✓
Trauma Care	✓	✓	✓		✓		
Fracture		✓	✓		✓		
Sprains	✓	✓	✓		✓		
Weak Ankles	✓						
Plantar Fasciitis				✓			
Wound/Ulcer Off-loading							
Presence of K-Wires							
Cast Protection							
Large Dressings							
Diabetic Foot/Neuropathy						✓	
All Weather Protection							
Foot Pain							
Suggested HCPCS code	L1906	L4386	L4386		L4386	A5500	L3100
Pages	25	15	15	22	14	19	11



Indications	HeelWedge™	MedSurg™	Original MedSurg™	OrthoWedge®	PTQ Series PegAssist™	PQ Series PegAssist™
Postoperative Healing	✓	✓	✓	✓	✓	✓
Trauma Care		✓	✓			
Fracture						
Sprains						
Weak Ankles						
Plantar Fasciitis						
Wound/Ulcer Off-loading	✓	✓		✓	✓	✓
Presence of K-Wires	✓	✓	✓	✓		
Cast Protection						
Large Dressings		✓				
Diabetic Foot/Neuropathy						
All Weather Protection						
Foot Pain						
Suggested HCPCS code						
Pages	9, 18	7, 19	7	9, 18	17	17



Indications	Pneumatic Night Splint	ProMotion™ Plus	SlimLine™ Cast Boot	Softie™ Shoe	TAS™ - Toe Alignment Splint	WCS™ - Wound Care Shoe System	Web™ Ankle Brace
Postoperative Healing				✓	✓		
Trauma Care			✓	✓			✓
Fracture			✓				
Sprains							✓
Weak Ankles							✓
Plantar Fasciitis	✓	✓					
Wound/Ulcer Off-loading						✓	
Presence of K-Wires			✓	✓			
Cast Protection			✓				
Large Dressings			✓				
Diabetic Foot/Neuropathy						✓	
All Weather Protection							
Foot Pain		✓					
Suggested HCPCS code	L4396	L3040			L3100		L1902
Pages	21	31	13	8	10	17	26



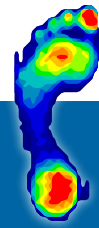
Postoperative Care

MedSurg™

Postoperative Shoe



Standard Sole Surgical Shoe

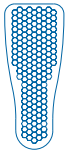


DARCO MedSurg™ Shoe



- › Square-toe design acts as a bumper to protect the toes when k-wires are present and provides better left/right fit.
- › MetaShank™ protection provides more rigid control under the metatarsal heads.
- › Strapless closure eliminates buckle pressure on the forefoot and can expand to accommodate dressing up to 17 inches in circumference.
- › Fully compatible with DARCO's PegAssist™ (PTQ Series) off-loading insole and the Body Armor® Toe Guard.

Compatible with:



PTQ PegAssist™



Body Armor® Toe Guard - Square-toe

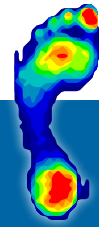
The MedSurg™ Shoe is the most versatile postoperative shoe on the market today. EVA insole features twice the padding of standard insoles and can be modified as needed or removed to accommodate the PegAssist™ off-loading insole.

Original MedSurg™

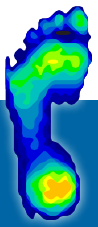
Postoperative Shoe



Standard Sole Surgical Shoe



Original MedSurg™ Shoe



- › Patented metatarsal shank provides superior control of forefoot motion to ensure postoperative healing remains undisturbed. Better protection after osteotomies.
- › Reinforced padded heel grips the foot and reduces slippage.
- › Breathable mesh upper light weight material allows for proper ventilation and conforms to bony abnormalities.
- › Extra long straps accommodate even the bulkiest dressings.

Compatible with:



Body Armor® Toe Guard - Round-toe

The DARCO medical-surgical shoe is the shoe that started it all. Our original MedSurg™ shoe was invented over 25 years ago and has since become known as the industry standard. Often referred to generically as “the DARCO shoe”, it is anything but generic and its long list of features and excellent quality make it one of the best values in the business.

Softie™ Shoe

Postoperative Shoe



- › Semi-rigid metatarsal shank provides superior control of forefoot motion to ensure postoperative healing remains undisturbed. Better protection after osteotomies.
- › Tri-laminated upper made of light weight tricot-foam material is breathable and comfortably conforms to bony abnormalities.
- › The hook and loop straps are easy to fasten and unfasten with one hand.

Compatible with:



Body Armor® Toe Guard - Round-toe

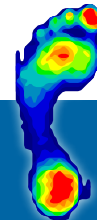
The Softie™ Shoe is a cost-effective alternative to the more premium shoes while still providing the rigidity and control of the forefoot you have come to expect from all DARCO products.

APB™

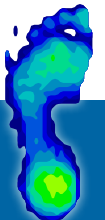
All Purpose Boot



Standard Sole Surgical Shoe

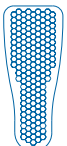


APB™



- › Rocker sole reduces plantar pressure under by over 25%.
- › Square-toe design acts as a bumper to protect the toes when k-wires are present and provides better left/right fit.
- › Ankle strap seats foot firmly in shoe to reduce heel slippage and eliminate friction.
- › Removable forefoot closure provides security while eliminating buckle pressure.
- › Zoned Outsole has an aggressive tread under the mid-foot where traction is needed most.
- › Unique metatarsal shank under the MP joints increases support and rigidity.
- › Removable Insole features twice the padding of standard insoles and can be modified as needed. Insole can be totally removed to accommodate Peg Assist™ (PQ Series) insole.

Compatible with:



PQ PegAssist™

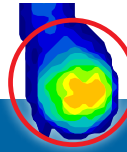
The APB™ embodies nearly perfect four season postoperative protection with a closed-toe design that keeps dressings and toes warm and dry. Our boot is designed to provide unparalleled versatility by accommodating both bulky dressings and most fiberglass casts.

HeelWedge™

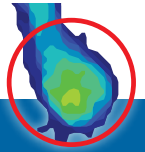
Off-loading Shoe



Standard Surgical Shoe

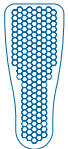


DARCO HeelWedge™



- › Reduces heel pressure by over 26%!
- › Square-toe design acts as a bumper to protect the toes and provides better left/right fit.
- › Ankle strap seats foot firmly in shoe to reduce heel slippage and eliminate friction.
- › Removable forefoot closure provides security while eliminating buckle pressure.
- › Zoned outsole has an aggressive tread under the midfoot where traction is needed most.
- › EVA insole features twice the padding of standard insoles and can be modified as needed or removed to accommodate PQ PegAssist™ off-loading insole.

Compatible with:



PQ PegAssist™

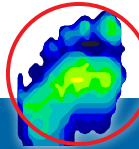
The HeelWedge™ is clinically proven to off-load pressure from the heel by shifting weight to the mid and forefoot to promote faster healing after surgery, trauma or when wounds or ulcerations are present on the heel.

OrthoWedge®

Off-loading Shoe



Standard Surgical Shoe

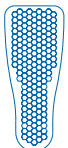


DARCO OrthoWedge™



- › Reduces forefoot pressure by as much as 57%!
- › Square-toe design acts as a bumper to protect the toes and provides better left/right fit.
- › Ankle strap seats foot firmly in shoe to reduce heel slippage and eliminate friction.
- › Removable forefoot closure provides security while eliminating buckle pressure.
- › Zoned outsole has an aggressive tread under the midfoot where traction is needed most.
- › EVA insole features twice the padding of standard insoles and can be modified as needed or removed to accommodate PQ PegAssist™ (PQ Series) off-loading insole.
- › Fully compatible with DARCO's Body Armor® Toe Guard.

Compatible with:



PQ PegAssist™

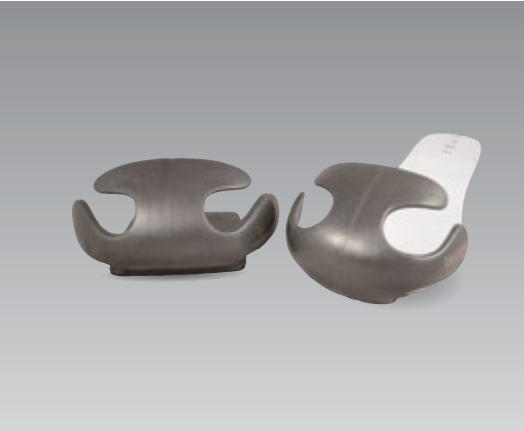


Body Armor® Toe Guard - Square-toe

The OrthoWedge® is clinically proven to reduce weight bearing pressure on the forefoot which promotes faster healing after surgery, trauma or when forefoot wounds or ulcerations are present.

Body Armor® Toe Guard

Toe Protection



- › Hard ABS construction is durable and withstands blows and strikes to the toe region in everyday situations.
- › Moldable side wings can be bent or molded to conform to any foot size.
- › Strong adhesive backing ensures secure, lasting fit.
- › Round-toe or square-toe versions available.

The Body Armor® Toe Guard provides extra protection for the toe region during the recovery process. It works particularly well when k-wires are present or anytime when accidental contact could cause pain or be detrimental to the healing process.

Two models across seven sizes means that the Body Armor® Toe Guard will accommodate almost any application. A round toe version fits all of our round-toe post-op shoes and a square-toe version fits DARCO square-toe shoes.

TAS™

Toe Alignment Splint



- › Low profile metatarsal band fits easily into most footwear and reduces slippage.
- › Soft toe straps will not irritate skin.
- › Special t-strap gently maintains proper alignment for post-procedural healing.
- › One sizes fits all.
- › Latex free.



TAS™ convenient six pack

The TAS™ - Toe Alignment Splint is a cost-effective solution that provides superior postoperative toe alignment after Hallux Valgus, Hammer Toe and Tailor's Bunion procedures.

GTS™

Great Toe Splint



- › Maintains alignment
- › 24 hour support
- › Helps relieve painful bunions
- › Can be worn postoperatively

The GTS™ - Great Toe Splint is an adjustable, postoperative splint. Indicated for relief of symptoms associated with hallux valgus and other great toe joint conditions. Manufactured with lightweight neoprene and nylon, the GTS™ can be worn day and night, and its form-fitting design easily accommodates suitable footwear.



Gentle corrective action helps maintain alignment



Can be worn under a sock to accommodate most footwear



Trauma Care, Walkers, Cast Shoes

Body Armor® Cast Shoe

Cast Boot



- › EVA unibody design provides unparalleled shock absorption while protecting the cast from the elements.
- › Unique bungee closure system is easy to use, easy to adjust and effectively secures the cast in the shoe.
- › Built-in toe guard protects the toes and prevents debris from entering the toe area.
- › Style that sets it apart; function that puts it in a class of its own.
- › Five sizes to accommodate any foot, while reducing inventory.

The Body Armor® Cast Shoe is a study in form and function. It is specifically engineered to shield the cast from moisture, shock and everyday wear. The shoe can be used with all casting materials and bulky bandages while sporting a fresh, modern design that will appeal to all patients.

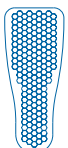
SlimLine™

Cast Boot



- › Square-toe design acts as a protective bumper and gives the patient more room to accommodate larger casts and bandages.
- › Forefoot closure can be adjusted to accommodate casts or bandages and can be switched between left/right closure.
- › Higher ankle strap adds stability.
- › Elasticized strap allows for fixed ankle ambulation.
- › Rocker sole allows for a smooth roll throughout the gait pattern.

Compatible with:



PQ PegAssist™



Body Armor® Toe Guard -
Square-toe

The SlimLine™ Cast Boot can be adapted to fiberglass casts, bulky compression bandages and a variety of wound care applications, making it one of the most versatile cast shoes on the market.

FXPro™

Walker



- › Low profile eliminates height difference between walker and normal shoe without altering gait and reducing hip and knee pain.
- › Padded liner is ventilated which promotes air circulation and aids in keeping the lower leg cool and comfortable.
- › Anatomically contoured “spatula” stirrups immobilize the ankle comfortably.
- › Pressure moldable, shock absorbing insole conforms to the foot for maximum comfort.

The FXPro™ is the lowest profile walker on the market and easily matches the heel height of most shoes. It's super-light, weighing in at less than 2 lbs and provides the ultimate cost effective solution. Maximum performance for minimum pricing equals VALUE!

Air Traveler™

Pneumatic Walker



- › Circumferential air bladder provides custom fit and unparalleled compression.
- › Low profile sole more closely aligns with shoe height to allow for a more natural stride.
- › Light weight, tipping the scales at a mere 14 ounces, the Air Traveler™ is much less obtrusive to the wearer than typical walkers.
- › 10mm EVA insole gives the patient the support they need with the comfort they desire.

The Air Traveler™ walker features a circumferential air bladder that provides the ultimate compression and security for the wearer. The inflation/deflation system allows the patient to easily adjust pressure, and the five-way strapping system adjusts to fit virtually any leg. The Air Traveler™ is one of the lowest profile walkers on the market with the sole height measuring 6/10 of an inch.

Body Armor® Walker

Cast Replacement



- › Rigid shell provides uniform compression which aids to reduce adema and secure immobilization.
- › Ski-boot closure allows every user to find a secure and comfortable fit.
- › Removable liner can be laundered and replaced.

DARCO's original rigid walker provides unparalleled protection, compression and immobilization for foot and ankle conditions where ambulation is permitted. It is the perfect alternative to a weight-bearing cast for compliant patients. Available in both standard and short lengths.

Body Armor® Walker II

Cast Replacement



- › Rigid shell provides uniform compression which aids to reduce adema and secure immobilization.
- › Ski-boot closure allows every user to find a secure and comfortable fit.
- › Flexible upper conforms to the leg and provides more uniform compression of the foot and ankle.
- › Removable Plastazote® insoles allow for targeted off-loading when required.

An updated version of the original, the Body Armor® Walker II also provides unparalleled protection, compression and immobilization for foot and ankle conditions where ambulation is permitted. The Body Armor® Walker II also features a built-in liner and raised air vents for extra cooling when needed. It is the perfect alternative to a weight-bearing cast for compliant patients. Removable insole system can be modified to off-load the plantar surface. Available in both standard and short lengths.



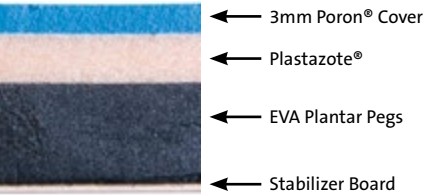
Off-loading and Wound Care

PegAssist™

Off-loading Insoles



PegAssist Insole™ Cross Section

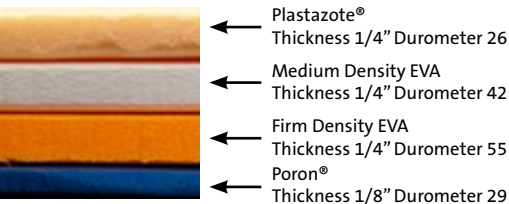


WCS™

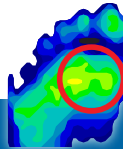
Wound Care Shoe System



WCS™ Cross Section



Standard Surgical Shoe



DARCO MedSurg™ with PegAssist™



Use the PTQ Series with



Use the PQ Series with



- › Removable pegs allow for localized off-loading of wounds and ulcerations of the foot.
- › Pressure reduced by as much as 60% while allowing patient to remain ambulatory.
- › Poron® cover eliminates the incidence of ring edema and edge abrasion.
- › Stabilizer board prevents adjacent pegs from collapsing.

PTQ Series Insole

The perfect choice for the treatment of diabetic ulcerations. The **PTQ Series PegAssist™** Insole is designed to fit the DARCO Square-Toe MedSurg™ Shoe creating a cost-effective option for wound care and one that significantly reduces pressure postoperatively. The PegAssist™ insole, when combined with the MedSurg™ Shoe, minimizes pressure on wounds for faster healing while still allowing patients to maintain their mobility.

PQ Series Insole

The **PQ Series PegAssist™** Insole is built around a multi-purpose removable peg insole designed to fit the HeelWedge™, OrthoWedge® and APB™. Removable pegs allow for localized pressure relief and the stabilizer board prevents the pegs from collapsing.

- › Four multi-density insoles allow for the ultimate in customization and precisely targeted off-loading.
- › Ultra-soft Plastazote® lining provides a virtually friction-free contact surface that won't exacerbate existing wounds.
- › Genuine leather upper can be modified or cut away to provide even greater levels of pressure relief.
- › Sold in pairs to eliminate discrepancies in shoe height and the potential associated knee and hip pain.

The WCS™ - Wound Care Shoe System is the product of choice when dealing with Wagner Grade 3 or greater ulcerations. The four multi-density insoles can be modified, effectively removing pressure from the plantar aspect of the foot.



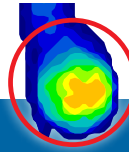
Replacement insoles available. Sold separately.

HeelWedge™

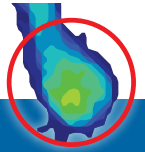
Off-loading Shoe



Standard Surgical Shoe

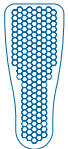


DARCO HeelWedge™



- › Reduces heel pressure by over 26%!
- › Square-toe design acts as a bumper to protect the toes when k-wires are present and provides better left/right fit.
- › Ankle strap seats foot firmly in shoe to reduce heel slippage and eliminate friction.
- › Removable forefoot closure provides security while eliminating buckle pressure.
- › Zoned outsole has an aggressive tread under the midfoot where traction is needed most.

Compatible with:



PQ PegAssist™

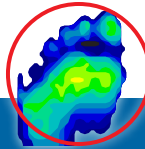
The HeelWedge™ is clinically proven to off-load pressure from the heel by shifting weight to the mid and forefoot to promote faster healing when wounds or ulcerations are present on the heel. The removable EVA insole features twice the padding of standard insoles and can be modified as needed. For customizable off-loading, insole can be totally removed to accommodate DARCO's innovative PQ PegAssist™ insole.

OrthoWedge®

Off-loading Shoe



Standard Surgical Shoe

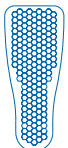


DARCO OrthoWedge®



- › 15° wedge sole effectively shifts body weight to the midfoot and heel. Reduces forefoot pressure by as much as 57%!
- › Square-toe design acts as a bumper to protect the toes when k-wires are present and provides better left/right fit.
- › Ankle strap seats foot firmly in shoe to reduce heel slippage and eliminate friction.
- › Removable forefoot closure provides security while eliminating buckle pressure.
- › Zoned outsole has an aggressive tread under the midfoot where traction is needed most.

Compatible with:



PQ PegAssist™



Body Armor® Toe Guard - Square-toe

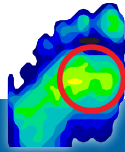
The OrthoWedge® is clinically proven to reduce weight bearing pressure on the forefoot which promotes faster healing when forefoot wounds or ulcerations are present. The removable EVA insole features twice the padding of standard insoles and can be modified as needed. For customizable off-loading, insole can be totally removed to accommodate DARCO's innovative PQ PegAssist™ insole.

MedSurg™

Postoperative Shoe



Standard Surgical Shoe

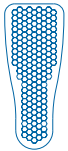


DARCO MedSurg™ with PegAssist™



- › Rocker sole reduces plantar pressure on the heel and forefoot by over 25%.
- › Square-toe design acts as a bumper to protect the toes and provides better left/right fit.
- › MetaShank™ protection provides more rigid control under the metatarsal heads.
- › Strapless closure eliminates buckle pressure on the forefoot and can expand to accommodate dressing up to 17 inches in circumference.

Compatible with:



PTQ PegAssist™



Body Armor™ Toe Guard - Square-toe

When used with the PTQ PegAssist™ off-loading insole the MedSurg™ Shoe is one of the most effective wound care shoe on the market today. The rocker sole allows for easy ambulation through the gait pattern, eliminating high pressure strikes where wounds are most likely to occur.

GentleStep™

Diabetic Shoe



- › Molded outsole conceals extra depth and provides lower profile and enhanced style.
- › Fully breathable Lycra® upper reduces weight while increasing comfort.
- › Firm heel counter ensures stable and comfortable fit.
- › Machine washable means that the GentleStep™ will stay looking nice for a long time.
- › Available in twenty-two sizes and three widths.

The GentleStep™ Shoe is a Medicare approved extra-depth shoe designed specifically for the needs of certain patients with diabetes. The upper is constructed of a light-weight LYCRA® to provide extra comfort for patients with forefoot deformities or lesions. Conforms to the Medicare Therapeutic Shoe Bill.



Plantar Fasciitis Products

Pneumatic Night Splint

Posterior Night Splint



- › Integrated air system makes inflation and deflation a snap. Now with no external parts to misplace.
- › Internal air bladder allows for infinite adjustments to suit any wearer.
- › Cotton terry cloth liner is soft, comfortable and absorbent.
- › Provides the stretch to the plantar fascia that is the key to relief.

The Pneumatic Night Splint features a fully-integrated inflation/deflation system that can be easily operated with one hand. The internal air bladder is infinitely adjustable so every wearer can find the degree of dorsiflexion that works best for them. The natural cotton terry liner absorbs moisture and ensures a cool, comfortable fit and a non-skid sole for minimal ambulation when deflated.

Body Armor® Night Splint

Dorsal Night Splint



- › Toe strap dorsiflexes the first MPJ to provide a specific and sustained stretch to the plantar fascia and a sustained low load stretch to the flexor tendons, Achilles tendon and calf muscles.
- › Loading the windlass mechanism naturally brings the foot/ankle to a near 90 degree angle thus eliminating the “lever effect” and the resulting pressure on the apex of the ankle present in other dorsal models.
- › Elastic connector ring allows for natural flexion of the foot and toes during sleep and gently returns the foot to the dorsiflexed position as muscles relax.
- › Low profile design allows for maximum user comfort and compliance.
- › One-size-fits-all means reduced inventory and ensures that the right size is always on hand.

The Body Armor® Night Splint is the only night splint that actively engages the windlass mechanism of the foot, resulting in a specific and sustained stretch to the plantar fascia, and a sustained low load stretch to the flexor tendons, Achilles tendon and calf muscles. The traction strap allows for minimal ambulation.

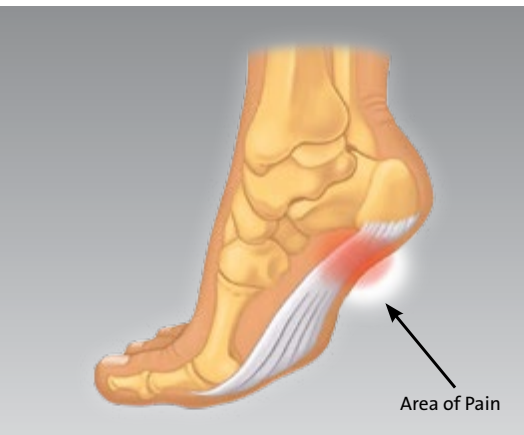
DCS™ - Plantar Fasciitis Sleeve

Compression Sleeve



- › Targeted medical grade compression zones provide a sustained stretch to the plantar fascia.
- › Six graduated compression zones improve circulation and reduce edema.
- › 24 hour support - wear while sleeping or under socks when active.
- › Constructed of medical grade fabric that is latex free.

The DARCO DCS™ - Plantar Fasciitis Sleeve is designed with “FS6 Technology” to create six zones of compression that effectively stretches the plantar fascia while simultaneously improving circulation and reducing the edema associated with plantar fasciitis.



Medical Grade Graduated Compression Zones:

Zones #1 & 6 Gentle Compression

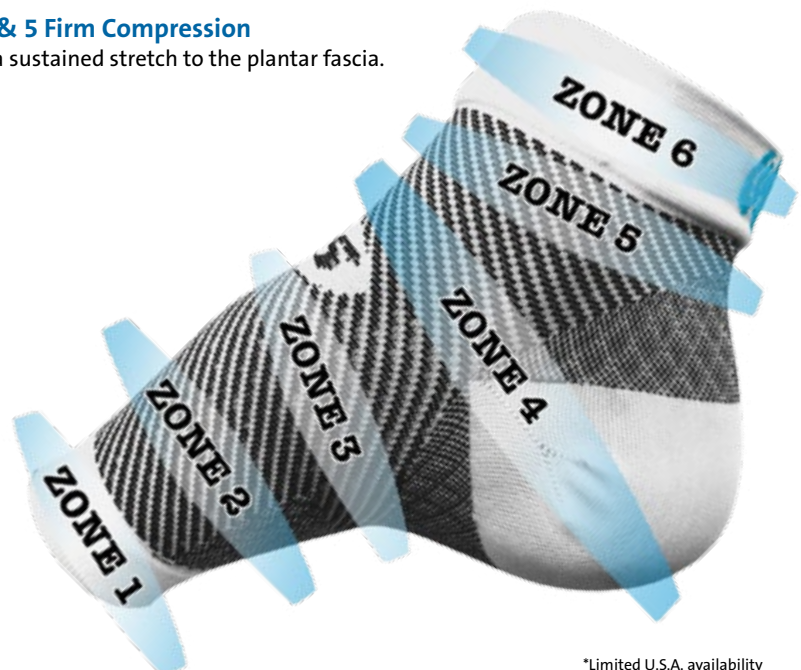
To promote circulation and minimize pressure on ankle and toes.

Zones #2 & 4 Moderate Compression

To reduce edema and move fluids out of the foot.

Zones #3 & 5 Firm Compression

To provide a sustained stretch to the plantar fascia.



*Limited U.S.A. availability





Ankle Supports

Body Armor® Vario

Ankle Support



- › Heel posting disks allow for varus/valgus correction.
- › Customizable arch height supports medial midfoot.
- › 3/4 insole supports the arch and captures the calcaneus in comfort.
- › Trimmable straps can be adjust to open/close in a specific position on the leg.
- › Official PDAC code L-1906. Letter on file.



Heel posting disk
3 angles of inclination: 2°, 4°, 6°

Arch height adjustments
3 sizes: S, M, L

First line treatment for posterior tibial tendonitis and peroneal tendonitis. Customizable varus/valgus heel disks and arch height. Designed by a board certified foot and ankle specialist. Viable alternative to expensive custom ankle braces.

Body Armor® Sport

Ankle Support



- › Post-traumatic and preventive care.
- › Anatomically shaped stirrups ensures a perfect fit.
- › Customizable.
- › Physiologically-correct movement of the foot.
- › Prevents the frontal shift of the talus.
- › Unique strapping system prevents the forward shift of the talus protecting the anterior talo-fibular ligament.
- › Low profile uprights easily fits under sport or dress shoes.

The Body Armor® Sport is an ankle joint orthosis which is applied during the acute phase of injury as well as during the process of rehabilitation.

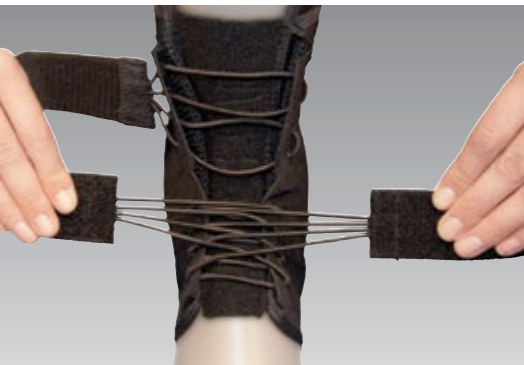
Web™ Ankle Brace

Ankle Support



- › Bungee closure provides superior compression and allows for adjustments on the run.
- › Removable medial and lateral stays are rigid enough to provide controlled restriction of inversion/eversion.
- › Multiple strapping configurations to further control inversion/eversion and to direct compression where needed.
- › Durable ballistic nylon shell is breathable and conforms to the foot for a comfortable fit.
- › High tech spacer material padding wicks moisture away from foot.
- › Universal fit allows use on right or left ankle.
- › Reimbursable under suggested L-code 1906.

The Web™ Ankle Brace is a true convertible ankle brace that provides unparalleled compression and can go from an acute brace to a sports support with a simple adjustment - no need to buy two braces.







Kinesiology tape

DARCO Elastic Tape

Kinesiology Tape



- › Stimulates circulation and increases both blood flow and the flow of lymphatic fluids to promote healing of the affected area.
- › Improves performance by facilitating greater range of motion during use.
- › Water-resistant tape stays on for days or until the wearer wants to remove it.
- › Extremely cost-effective - Identical performance as other brands at a fraction of the cost.

DARCO Elastic Tape is an elastic sport and therapy tape made especially for use in applied kinesiology. Kinesiology tape is used worldwide by athletic trainers and physicians alike because it provides portable and immediate treatment of muscle, fascia and tendon symptoms and advances performance by way of continuous receptor stimulation. The natural healing process is enhanced due to improved circulation in the taped areas.

Available in Five Colors ■ ■ ■ ■ ■



The DARCO Elastic Tapes are currently available in red, blue, yellow, black, and beige.



Orthotic Insoles

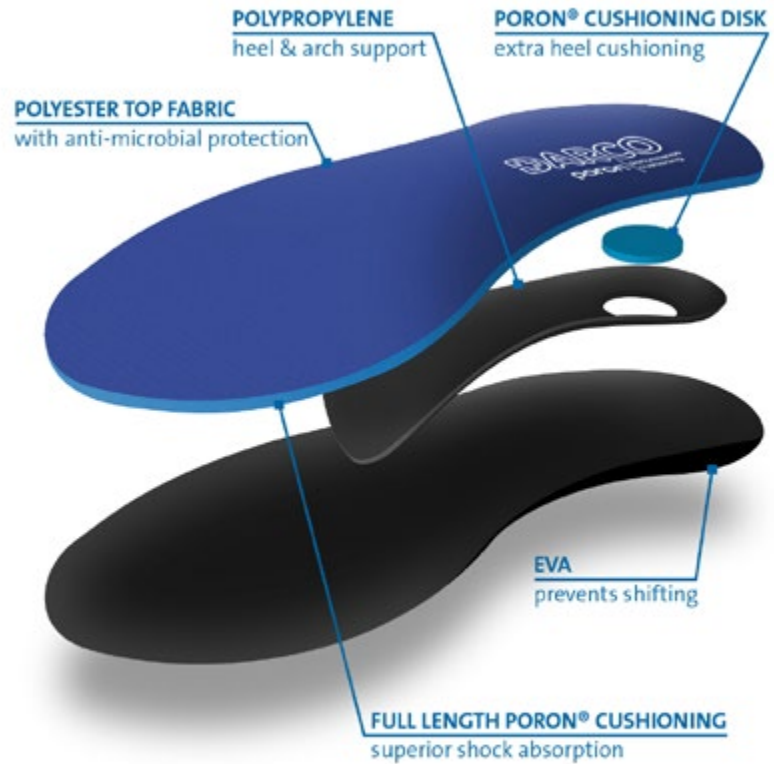
ProMotion™ Plus

Orthotic Insoles



- › Full length US made PORON® Cushioning foam layer provides superior shock absorption
- › US made high quality top layer fabric features anti-microbial odor control and low friction
- › Heel to toe cushioning foam that won't flatten or bottom out provides a superior feel and long term wear benefits
- › EVA covered polypropylene heel and arch support. Provides a firm support that cradles the heel and arch area. The EVA surface prevents the insole from shifting while walking and adds durability
- › Only available through health care providers
- › Economically priced

The DARCO ProMotion™ Plus orthotic insole features a full length PORON® Cushioning layer which provides greater comfort and doesn't bottom out long term.



poron | performance
cushioning

PORON is a licensed trademark of Rogers Corporation.



Pediatric Products

Pediatric MedSurg™

Postoperative Shoe



- › Square-toe design acts as a bumper to provide extra protection and facilitates better left/right fit.
- › MetaShank™ protection provides more rigid control under the metatarsal heads.
- › Strapless closure eliminates buckle pressure on the forefoot and can expand to accommodate large dressings.
- › Rocker sole reduces plantar pressure on the heel and forefoot by over 25%.
- › Sized to accommodate younger patients.

The Pediatric MedSurg™ shoe is a versatile, comfortable and lightweight post-op shoe that is perfect for the smaller foot.

Pediatric Original MedSurg™

Postoperative Shoe



- › Patented metatarsal shank provides superior control of forefoot motion to ensure postoperative healing remains undisturbed. Better protection after osteotomies.
- › Reinforced padded heel grips the foot and reduces slippage.
- › Breathable mesh upper, light weight material allows for proper ventilation and conforms to bony abnormalities.
- › Extra long straps accommodate even the bulkiest dressings.

The DARCO medical-surgical shoe is the shoe that started it all. Our Original MedSurg™ shoe was invented over 25 years ago and has since become known as the industry standard. Often referred to generically as “the DARCO shoe”, it is anything but generic and its long list of features and excellent quality make it one of the best values in the business.

Pediatric SlimLine™

Cast Boot



- › Forefoot closure can be adjusted to accommodate casts or bandages and can be switched between left/right closure.
- › Upper ankle strap adds stability.

The Pediatric SlimLine™ cast boot can be adapted to fiberglass casts, bulky compression bandages and a variety of wound care applications, making it one of the most versatile cast shoes on the market.



Diagnostic Products

MonoTemp™

Sensitivity Tester



- › 2-in-1 tester for symmetric polyneuropathy.
- › Compact and easy to use.
- › Pocket clip.

The MonoTemp™ is a diagnostic tool that checks for distal symmetric polyneuropathy that utilizes both thermal and pressure testing. The alloy tip produces a cool sensation while the polymer tip remains neutral. The polymer tip unscrews to reveal a monofilament.

FootFilament™

Sensitivity Tester

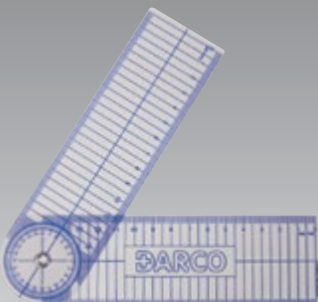


- › Assess touch and pressure sensation in large nerve fibers.
- › Compact and easy to use.

The compact FootFilament™ opens to reveal a 10g monofilament. The raised dots on the front and back indicate test sites.

Goniometer

Range of Motion Tester



- › Measures axis and range of motion.
- › Allows clinicians to gauge patient progress.
- › Compact.

The pocket-sized DARCO Goniometer is graduated in millimeters for quick and accurate measurements.

Sizes and Product Codes



Air Traveler™

High Version:	Women:	Men:	Product Code
XS	3.5 - 6	-	AT0
S	6.5 - 9	5 - 7.5	AT1
M	9.5 - 12	8 - 10.5	AT2
L	12.5+	11 - 13	AT3
XL	-	13.5+	AT4
Low Version:	Women:	Men:	Product Code
XS	3.5 - 6	-	ATS0
S	6.5 - 9	5 - 7.5	ATS1
M	9.5 - 12	8 - 10.5	ATS2
L	12.5+	11 - 13	ATS3
XL	-	13.5+	ATS4

APB™ - All Purpose Boot



Size:	Women:	Men:	Product Code
XS	4 - 7	-	APQ0B
S	7.5 - 10	6 - 8	APQ1B
M	10.5 - 13	8.5 - 10	APQ2B
L	13+	10.5 - 12	APQ3B
XL	-	12.5 - 14	APQ4B

Body Armor® Cast Shoe



Size:	Women:	Men:	Product Code
XS	< 5	-	BACSO
S	5.5 - 8	-	BACS1
M	8.5 - 10	6 - 8	BACS2
L	10.5 - 13	8.5 - 11	BACS3
XL	13.5+	11.5 - 14	BACS4



Body Armor® Night Splint

Size:	Product Code
Universal	BADS



Body Armor® Sport

Left:	Women:	Men:	Product Code
S	5 - 8	< 7	BAS1L
M	9 - 12	7.5 - 10.5	BAS2L
L	13+	11 - 14	BAS3L
Right:	Women:	Men:	Product Code
S	5 - 8	< 7	BAS1R
M	9 - 12	7.5 - 10.5	BAS2R
L	13+	11 - 14	BAS3R



Body Armor® Toe Guard

Size:	Square - toe	Round- toe
WS - WL	BATGQ1	BATGS1
MS - MXL	BATGQ2	BATGS2



Body Armor® Walker

High Version:	Women:	Men:	Product Code
S	7 - 8.5	6 - 7.5	BAW1
M	9 - 11.5	8 - 10.5	BAW2
L	12+	11 - 14	BAW3
Low Version:	Women:	Men:	Product Code
S	7 - 8.5	6 - 7.5	BAWS1
M	9 - 11.5	8 - 10.5	BAWS2
L	12+	11 - 14	BAWS3



Body Armor® Walker II

High Version:	Women:	Men:	Product Code
XS	< 4	-	BAT0
S	4.5 - 6.5	< 6	BAT1
M	7 - 10	6.5 - 9	BAT2
L	10.5 - 13	9.5 - 13	BAT3
XL	-	> 13.5	BAT4
Low Version:	Women:	Men:	Product Code
XS	< 4	-	BATSO
S	4.5 - 6.5	< 6	BATS1
M	7 - 10	6.5 - 9	BATS2
L	10.5 - 13	9.5 - 13	BATS3
XL	-	> 13.5	BATS4



Body Armor® Vario

Size:	Description	Product Code
Standard	Left	BAV2L
Standard	Right	BAV2R
Wide	Left	BAV3L
Wide	Right	BAV3R



DARCO Elastic Tape

Color:	Length:	Width:	Product Code
Red	16.5 feet	2 inches	BAET-R
Blue	16.5 feet	2 inches	BAET-N
Yellow	16.5 feet	2 inches	BAET-Y
Black	16.5 feet	2 inches	BAET-B
Beige	16.5 feet	2 inches	BAET-T



DCS™ - Plantar Fasciitis Sleeve (Limited U.S.A. availability)

Size:	Arch Circ.	Women:	Men:	Product Code
S	5 - 8 in	4 - 6.5	3 - 5.5	DCS-PF1
M	7 - 10 in	7 - 10.5	6 - 9.5	DCS-PF2
L	9 - 13 in	11+	10 - 13	DCS-PF3
XL	11 - 15 in	-	13.5+	DCS-PF4

GTS™ - Great Toe Splint



Size:	Avg. Shoe Size	Product Codes	
		Women:	Men:
S	W 5-7.5 / M 7-9.5	GTS1R	GTS1L
L	W 8-11 / M 10-13	GTS2R	GTS2L



FXPro™

High Version:	Women:	Men:	Product Code
XS	3.5 - 6	-	FX0
S	6.5 - 9	5 - 7.5	FX1
M	9.5 - 12	8 - 10.5	FX2
L	12.5+	11 - 13	FX3
XL	-	13.5+	FX4

Low Version:	Women:	Men:	Product Code
XS	3.5 - 6	-	FXS0
S	6.5 - 9	5 - 7.5	FXS1
M	9.5 - 12	8 - 10.5	FXS2
L	12.5+	11 - 13	FXS3
XL	-	13.5+	FXS4

HeelWedge™



Size:	Women:	Men:	Product Code
XS	4 - 7	-	HQ0B
S	7.5 - 10	6 - 8	HQ1B
M	10.5 - 13	8.5 - 10	HQ2B
L	13+	10.5 - 12	HQ3B
XL	-	12.5 - 14	HQ4B

MedSurg™



Size:	Women:	Men:	Product Codes	
			Women:	Men:
S	4 - 6	6 - 8	MQW1B	MQM1B
M	6.5 - 8	8.5 - 10	MQW2B	MQM2B
L	8.5 - 10	10.5 - 12	MQW3B	MQM3B
XL	-	12.5 - 14	-	MQM4B

Pediatric MedSurg™

Size:	Children:	Product Code
Pediatric	12 - 1	MQPB

Original MedSurg™



Size:	Women:	Men:	Product Codes	
			Women:	Men:
S	4 - 6	6 - 8	MSW1N	MSM1N
M	6.5 - 8	8.5 - 10	MSW2N	MSM2N
L	8.5 - 10	10.5 - 12	MSW3N	MSM3N
XL	-	12.5 - 14	-	MSM4N

Pediatric MedSurg™

Size:	Children:	Product Code
Pediatric	12 - 1	MSPN

GentleStep™



Women:	Men:	Medium (B & C)	Wide (D & E)	Extra-Wide (EE & EEE)
5.5	4	GS055MB	GS055WB	GS055XB
6	4.5	GS060MB	GS060WB	GS060XB
6.5	5	GS065MB	GS065WB	GS065XB
7	5.5	GS070MB	GS070WB	GS070XB
7.5	6	GS075MB	GS075WB	GS075XB
8	6.5	GS080MB	GS080WB	GS080XB
8.5	7	GS085MB	GS085WB	GS085XB
9	7.5	GS090MB	GS090WB	GS090XB
9.5	8	GS095MB	GS095WB	GS095XB
10	8.5	GS100MB	GS100WB	GS100XB
10.5	9	GS105MB	GS105WB	GS105XB
11	9.5	GS110MB	GS110WB	GS110XB
11.5	10	GS115MB	GS115WB	GS115XB
12	10.5	GS120MB	GS120WB	GS120XB
12.5	11	GS125MB	GS125WB	GS125XB
13	11.5	GS130MB	GS130WB	GS130XB
13.5	12	GS135MB	GS135WB	GS135XB
14	12.5	GS140MB	GS140WB	GS140XB
14.5	13	GS145MB	GS145WB	GS145XB
15	13.5	GS150MB	GS150WB	GS150XB
15.5	14	GS155MB	GS155WB	GS155XB
16	14.5	GS160MB	GS160WB	GS160XB

OrthoWedge®



Size:	Women:	Men:	Product Code
XS	4 - 7	-	OQ0B
S	7.5 - 10	6 - 8	OQ1B
M	10.5 - 13	8.5 - 10	OQ2B
L	13+	10.5 - 12	OQ3B
XL	-	12.5 - 14	OQ4B

Sizes and Product Codes Cont.



PTQ Series PegAssist™

Size:	Women:	Men:	Product Codes	
			Women:	Men:
S	4 - 6	6 - 8	PTQW1	PTQM1
M	6.5 - 8	8.5 - 10	PTQW2	PTQM2
L	8.5 - 10	10.5 - 12	PTQW3	PTQM3
XL	-	12.5 - 14	-	PTQM4



PQ Series PegAssist™

Size:	Women:	Men:	Product Code
XS	4 - 7	-	PQ0
S	7.5 - 10	6 - 8	PQ1
M	10.5 - 13	8.5 - 10	PQ2
L	13+	10.5 - 12	PQ3
XL	-	12.5 - 14	PQ4



Pneumatic Night Splint

Size:	Women:	Men:	Product Code
S	up to 6.5	-	NS1B
M	7 - 10	5 - 8	NS2B
L	10.5 - 13	8.5 - 11	NS3B
XL	13.5+	11.5 - 14	NS4B



SlimLine™ Cast Shoe

Size:	Women:	Men:	Product Code
XS	< 5	-	SLQ0B
S	5.5 - 8	-	SLQ1B
M	8.5 - 10	6 - 8	SLQ2B
L	10.5 - 13	8.5 - 11	SLQ3B
XL	13.5+	11.5 - 14	SLQ4B



Pediatric SlimLine™ Cast Boot

Size:	Children:	Product Code
Pediatric Small	5 - 7	SLO1NP
Pediatric Med	8 - 11.5	SLO2NP
Pediatric Large	12 - 1.5	SLO3NP
Adult X-Small	2 - 4	SLQ0B



ProMotion™ Plus

Size:	Women:	Men:	Product Code
3	5 - 5.5	-	PMP03
4	6 - 6.5	-	PMP04
5	7 - 7.5	5 - 5.5	PMP05
6	8 - 8.5	6 - 6.5	PMP06
7	9 - 9.5	7 - 7.5	PMP07
8	10 - 10.5	8 - 8.5	PMP08
9	11 - 11.5	9 - 9.5	PMP09
10	12 - 12.5	10 - 10.5	PMP10
11	13 - 13.5	11 - 11.5	PMP11
12	-	12 - 13.5	PMP12
14	-	14 - 14.5	PMP14



Softie™ Shoe

Size:	Women:	Men:	Product Codes	
			Women:	Men:
S	4 - 6	6 - 8	STW1B	STM1B
M	6.5 - 8	8.5 - 10	STW2B	STM2B
L	8.5 - 10	10.5 - 12	STW3B	STM3B
XL	-	12.5 - 14	-	STM4B



TAS™ - Toe Alignment Splint

Size:	Product Code
Universal	TAS



WCS™ - Wound Care Shoe

Size:	Women:	Men:	Product Code
XS	4 - 5.5	-	WCS0B
S	6 - 8.5	6 - 7.5	WCS1B
S/M	9 - 9.5	8 - 8.5	WCS7B
M	10 - 10.5	9 - 9.5	WCS2B
L	11 - 12.5	10 - 11.5	WCS3B
XL	13 - 14.5	12 - 13.5	WCS4B
2XL	15 - 17	14 - 16	WCS5B



Web™ Ankle Brace

Size:	Women:	Men:	Product Code
XS	4 - 6	-	WB0
S	6.5 - 9	6 - 7	WB1
M	9.5 - 11	7.5 - 10	WB2
L	11.5 - 13	10.5 - 12	WB3
XL	13.5 - 15	12.5 - 14	WB4

Diagnostic Products



MonoTemp™

Product Code
MT



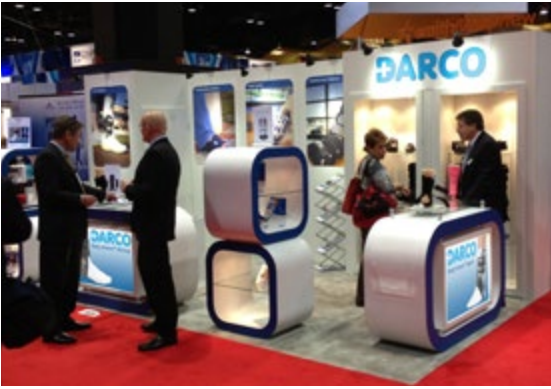
FootFilament™

Product Code
FF



Goniometer

Product Code
GM



PORON is a licensed trademark of Rogers Corporation.
Plastazote® is a registered trademark of Zotefoams PLC.
LYCRA® is a registered trademark of INVISTA

Publisher and responsible for content

DARCO International
810 Memorial Blvd.
Huntington, WV 25701 | USA
Toll Free: 800-999-8866
Toll Free Fax: 877-201-7082
Voice: 304-522-4883
Fax: 304-522-0037

Last update

December 2013

© DARCO 2013

Product photography

DARCO International
DARCO (Europe) GmbH



www.darcointernational.com

DARCO

REV.1312