

2 0



0 9



MANUFACTURERS OF **IBeam** PRODUCTS
OMNIMED INC.[®]
800.257.2326 • www.omnimedbeam.com

New!

Omnimed, Inc. understands how valuable new products and technologies are to the changing healthcare industry. As a market-driven company, we listen to our customer's challenges and provide responsive and reliable product solutions to meet these needs. 2009 brings new Computer Work Stations to assist healthcare organizations with the transition to clinical information systems. All our products provide solutions for equipment storage, product security and patient/employee safety.



Viewpoint Wall Mount
#291490 - See page 4



Compact Informatics Wall Desk
#291512 - See page 6



ERGO Compact Transport Stand
#350714 - See page 10



Point-of-Care Cabinet
#291625 - See page 16



Clear PETG Glovebox Holders
#305361/#305362 - See page 19



Privacy Screen Panels
#153026/#153027 - See page 35



4" Deep Informatic Work Station

Custom Capabilities

From design and prototype to full-scale production, Omnimed, Inc. provides comprehensive custom engineering and manufacturing services. Our team will discuss your specific product needs and offer solutions to meet your requirements and budget. We create innovative computer renderings (shown above and below) to provide you with actual product images and details prior to manufacturing. Upon customer approval, we produce your new product in our state-of-the-art manufacturing facility.



Computer Rendering

New!

Contents



Visit our New Website

Omnimed, Inc. launches newly designed website at www.itwalldesks.com. Featuring our innovative line of high quality Computer Work Stations and Mobile Computer Transport Carts, this site offers high quality product images, features and benefits along with detailed video demonstrations to provide the information you need to purchase our first rate products. We understand the storage, security and transport challenges that healthcare facilities face with the transition to electronic medical records. Our new site communicates the information you need to make the right decisions.



Keep In Tune to All our Products

Experience all that Omnimed, Inc. has to offer at www.omnimedbeam.com. Log-on to our website and stay in touch with us “around the clock” to discover real-time information about our products and services. Our company has successfully gone the distance with well-known medical products designed specifically for equipment storage, security and transport. Our IT Wall Work Stations, Computer Transport Carts, Wall Storage Cabinets, Privacy Screens, Narcotic Cabinets and Glove box Holders are the best that the industry has to offer.

IT Wall Desks 2-7

- Informatics Work Station • Viewpoint Wall Mount
- Premier Informatics Work Station
- Informatics Work Center
- Premier Informatics Work Center
- Ultra-Sleek Informatics Wall Desk
- Thin-Client Informatics Work Station
- Laptop Wall Desk • Compact Informatics Wall Desk
- Recessed Informatics Work Station
- EVO Articulating Informatics Work Station
- Profile Articulating IT Station
- Articulating EVO IT Station

Wall Desks 8-9

- Elite Wall Desks • Deluxe Wall Desks
- Slim Line Wall Desks • Standard Wall Desks
- Wall Desk Accessories • Medication Distribution Cabinet

Computer Transport Stands . 10

- ERGO Computer Transport Stand
- Adjustable Laptop Transport Stand
- Security Laptop Stand • Computer Monitor Stand

Transport Stands 11

- Omni Clamp • Multi-Infusion Pump Post
- Transport Handle • Accessory Hook
- Oxygen Cylinder Holder • Stat Tray
- Bin/Basket Adapter • Beam® Stand
- Doppler Stand • Heavy Weight™ Infusion Stand
- Jr. Heavy Weight™ Stand • Stand Accessories

Power Lifter™ 12-13

- Power Lifter® • Power Lifter® II

Narcotic Cabinets 14-15

- Single Door Narcotic Cabinets
- Double Door Narcotic Cabinets
- Twin Narcotic Cabinets • Corner Narcotic Cabinet
- Pass Thru Cabinet • Economy Narcotic Cabinets

Wall Storage Cabinets . 16-17

- Point-of-Care Cabinet
- Wall Storage Cabinets
- Deluxe Narcotic Cabinet with Audit Digital Lock
- Patient Security Cabinets

Room I.D. Flag System . . . 18

- 6 Flags • Custom Flags

Glove Box Holders 19

- Stainless Steel Glove Box Holders
- Single/Double & Triple Glove Box Holders
- Adjustable Glove Box Holders
- Wire Glove Box Holders
- Clear PETG Glove Box Holders

Identification Bracelets . . 20

- Stat I.D.® Interim Identification Bracelet
- Beam® Bands

Locks, Links & Seals 20

- Safety Control Lock Sets • Safety Control Seals
- Padlock Control Seals • Sure Strip Safety Seals

Bedpan Holders 21

- Bedpan Racks
- Wire Utility Rack
- Mobile I.V. Pole

Chart Racks 22-25

- Omniscart® Vertical Racks
- Omniscart® Flat Storage Racks
- Omniscart® Cabinet Racks
- Omni File Organizer
- Chart Rack Locking Options
- Table-Top Storage Racks
- Omniscart® Chart Carousel Racks

Transport Carts 26

- Utility Carts • Baskets/Storage Racks
- Wire Shelf Utility Cart • Mobile Supply Cart

Chart Holders 27

- Spring Loaded Chart Holders
- Wheeled Chart Carriers
- Medical Drop Box
- Chart-Lok® Closure

Molder Ring Binders 28

- Molded Ring Binders • Big Beam® Binders

Clipboards 29

- Overbed Clipboards • Poly Clipboards
- Poly Covered Clipboards • Aluminum Clipboards

Chart Accessories 30-31

- Med/Treatment Book • Flag-It® Chart Signals
- Flag-It® Spine Signals • Stat-Chek® Spine Signal
- Room Number Spine Clip • Reinforcer®
- Metal Charge Plate Holder • Sheet Lifters
- Pressure Sensitive Spine ID Labels • Wall Pockets
- Plastic Sheet Protectors
- Plastic Pressure Sensitive Pockets

Chart Dividers 32-33

- Custom Poly Dividers • Custom Paper Dividers
- Custom Tyvek® Dividers • Preprinted Poly Dividers

Privacy Screens 34-35

- Beamic Screens
- Economy Folding Screens
- 3-Section Screens on Casters
- King Size Screens
- Economy Vinyl Panels
- Designer Cloth Panels

Cubical Curtains 36

- Fabrics • Mesh • Track

IT Wall Desks



18 CFM Exhaust Fan

Provides maximum ventilation. Improves cool air distribution to keep your equipment running efficiently. Standard feature on #291455 & #291465. Optional on all other IT Wall Desks.



4 1/4 x 4 1/4" Rear Cut-out

Provides a neat and safe location to accommodate power and data outlets.



Key and Programmable Lock System

Provide security and protect patient's privacy with reliable and confidential locks that are easy to program and manage.



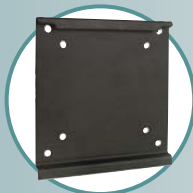
Versatile Work Desk

Sturdy fold-down work surface provides ample space for a full size keyboard and mouse. It also provides comfort and ergonomic functionality for everyday patient data management. Some models available with sliding keyboard holder.



Manual Close

Smooth operating gas cylinder easily adjusts to provide various manual closing strengths.



Technical Compliance

Monitor mounting plates comply with industry-wide VESA interface standards and are designed for easy monitor installation and removal. Work stations accommodate 19" monitors and various CPU models.



Tidy Cable Management

Dual-entry ports and storage pockets provide easy access for power and network wires to keep work station neat and safe.



Accurate Temperature Control

Side ventilation openings for proper heat dissipation to keep your computer at the right temperature.

The healthcare industry is going through extensive changes with the highlight being that the US Government has outlined a plan to ensure that most Americans have electronic health records within the next 10 years. This transition to electronic medical records will improve the quality of patient care, create enhanced patient safety, prevent medical errors, reduce costs and improve operational efficiency.

Omnimed, Inc.'s computer wall and mobile work stations provide transport, storage and security solutions to help healthcare facilities transition to electronic systems. These workstations are cost-effective and ergonomically functional to provide safety, efficiency and added productivity. Take a look at our IT line of products configured to meet healthcare facilities computing needs.



IT Universal Advantage

Omnimed's innovative computer work stations are specifically designed with the **IT Universal Advantage**. This unique feature enables healthcare facilities the option of using our wall mounts with almost any computer system and configuration. The **IT Universal Advantage** offers "worry-free choice" when it comes to selecting computer hardware because our work stations are compatible with the most current computer technologies. Take advantage of the **IT Universal Advantage**, choose Omnimed, Inc.

IT Wall Work Stations



#291556



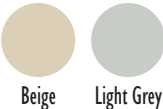
#291455



New!

Unit is also available with new self-closing gas cylinder. Please use 291556X or 291455X if you prefer self-closing door.

Specify Color:



Beige Light Grey



This model includes an 18 CFM Exhaust Fan for maximum ventilation. This fan improves cool air distribution to keep your equipment running efficiently.

Specify Trim Color:



Natural Oak Cherry

Informatics Work Station

#291556 (manual) - #291556X (self-close)

This full-size wall computer desk provides a solution for your data and information storage and security needs. This versatile work station has ample space for a CPU, monitor, keyboard and mouse.

Color: Beige & Light Grey / Custom colors available

Construction: Heavy gauge steel

Size: 24½H x 32W x 6D

- Multiple entry ports for power & network cabling
- Programmable push button lock with automatic security mechanism
- Monitor mounting plate for 75mm/100mm VESA standards
- Easily accommodates 19" monitors & various CPU models
- Large bottom storage area for cable management
- Side ventilation opening allows for proper heat dissipation
- Smooth operating gas cylinder with closure adjustment
- Large work space with room for keyboard, mouse and more
- 4¼" x 4¼" rear cut out for power and data outlets
- 3-year warranty (1-year on gas spring and lock)
- 18 CFM Exhaust Fan / Optional #291499

Premier Informatics Work Station

#291455 (manual) - #291455X (self-close)

This fashionable work station adds style to any healthcare environment. The full-size work station provides ample space and security for CPU, monitor, keyboard and mouse with a large work area.

Color: Beige / Custom colors available

Construction: Heavy gauge steel and wood

Size: 25½H x 31¾W x 6D

- Includes all features of the Informatics Work Station (#291556-shown to the left) plus:
- Solid oak or rich cherry wood frame to enhance décor
- 18 CFM exhaust fan for heat dissipation and temperature control
- Brass grommets and ventilation plates

IT Wall Work Centers



New!

#291490



Brass grommets and ventilation plates provide style and elegance.



18 CFM Exhaust Fan supplies maximum ventilation. Improves cool air distribution to keep your equipment running efficiently.



Preview Viewpoint Wall Mount video at:
www.itwalldesks.com/mounts.html

Viewpoint Wall Mount #291490

Color: Beige with oak trim

Construction: Oak frame & heavy gauge steel

Size: 44½"H x 23¾"W x 4"D

- Cabinet has 4" depth when closed and 13¼" when open providing safe hallway clearance
- Keyboard tray with independent 9 degree negative tilt
- Ambidextrous mouse tray for left or right hand use
- Viewing compartment accommodates monitors up to 22"
- Variable height monitor mounting with 75mm/100mm VESA standards
- Programmable push button lock with automatic security mechanism for keyboard compartment
- Side ventilation openings allow for proper heat dissipation
- 4¼" x 4¼" rear cut out for power and data outlets
- Smooth operating gas cylinder with closure adjustment for the keyboard tray compartment
- Multiple entry ports for power and network cables
- 3-year warranty (1-year gas spring and lock)
- Includes 18 CFM exhaust fan for heat dissipation and temperature control

IT Wall Work Centers



Two-Lock System

#291557

Specify Color:



Beige

Light Grey



New!

Unit are also available with new self-closing gas cylinder. Please use 291557X or 291465X if you prefer self-closing door.

Informatics Work Center

#291557 (manual) - #291557X (self-close)

with Electronic Security E-Lock

This wall desk features two areas to store your CPU, monitor, keyboard and mouse. The two-lock system provides extra security.

Color: Beige & Light Grey / Custom colors available

Construction: Heavy gauge steel

Size: 42H x 24 $\frac{1}{2}$ W x 4D

- Convenient mouse storage pocket & sliding keyboard tray for compact storage
- Multiple entry ports for power & network cabling
- Programmable electronic lock with automatic security mechanism
- Monitor mounting plate for 75mm/100mm VESA standards
- Easily accommodates 19" monitors & various CPU models
- Side ventilation openings allow for proper heat dissipation
- Smooth operating gas cylinder with closure adjustment
- 4 $\frac{1}{2}$ " x 4 $\frac{1}{2}$ " rear cut out in upper compartment for power & data outlets
- 3-year warranty (1-year on gas spring and lock)
- #291499 - 18CFM Exhaust Fan / Optional
- #291596 - Bypass Key
- #291596P - Programming Key
- #181495 - Power Jumper



Two-Lock System

#291465

Specify Trim Color:



Natural Oak

Cherry

Premier Informatics Work Center

#291465 (manual) - #291465X (self-close)

with Electronic Security E-Lock

This attractive work center adds style to any healthcare environment. The full-size work area provides ample space & security for CPU, monitor, keyboard and mouse.

Color: Beige / Custom colors available

Construction: Heavy gauge steel and wood

Size: 41 $\frac{1}{2}$ H x 23 $\frac{3}{4}$ W x 4D

- Includes all features of the Informatics Work Center (#291557 - shown to the left)
- Solid oak or rich cherry wood frame provides style and elegance
- Brass grommets and ventilation plates offer sleek appearance
- Includes 18 CFM exhaust fan for heat dissipation and temperature control
- Add accessories: Bypass key, Programming Key or Power Jumper



Power Jumper #181495

Used with 9V battery, provides entry when battery life expires.



Bypass Key #291596

Key can be used to override existing combination and reset program.

IT Wall Work Stations



#291511



#291470



Preview Thin-Client video at:
www.itwalldesks.com/mounts.html

Ultra-Sleek Informatics Wall Desk

Color: Beige & Light Grey / Custom colors available

Construction: Heavy gauge steel • **Size:** 23½H x 30W x 3D

- 3" depth provides for safe easement in hallways and corridors
- Multiple entry ports for power & network cabling
- Key lock provides security mechanism
- Accommodates most laptops and tablets
- Smooth operating gas cylinders with automatic or manual closure adjustment
- Large work area with ample space for keyboard, mouse and more
- 4¼" x 4¼" rear cut out for power and data outlets
- Ventilation holes are configured so exhaust fans can be easily installed
- 3-year warranty (1-year on gas spring and lock)
- 12 CFM Exhaust Fan / Optional #291498

Thin-Client Informatics Work Station

Color: Beige & Light Grey / Custom colors available

Construction: Heavy gauge steel • **Size:** 26H x 30W x 3½D

- 3.5" Deep unit meets rigid Michigan Fire Code regulations involving egress
- Flush mounted electronic lock for increased security
- Sliding keyboard tray for compact storage
- Adjustable storage shelf accommodates most Thin Clients computers
- Multiple access points for power and network cables
- 4¼" x 4¼" rear cut-out for power and data outlets
- Ventilation holes allow for heat dissipation and installation of exhaust fans
- Gas cylinders provide smooth assisted close, convenient mouse storage pocket
- 12 CFM Exhaust Fan / Optional #291498



#291559



#291512

New!

Laptop Wall Desk

Color: Beige & Light Grey / Custom colors available

Construction: Heavy gauge steel • **Size:** 23½H x 18W x 4D

- Laptop can be securely mounted using 3M Dual-lock strips
- Multiple entry ports for power and network cables
- Ventilation opening for accurate temperature control
- Ventilation holes are configured so exhaust fans can be easily installed
- Storage pocket and pen holder
- 12 CFM Exhaust Fan / Optional #291498

Compact Informatics Wall Desk

Color: Beige & Light Grey / Custom colors available

Construction: Heavy gauge steel • **Size:** 23½H x 30W x 4D

- Efficient workstation for computing and storing IT equipment
- Combined depth of monitor/CPU plus keyboard must be less than 3.65"
- Monitor mounting plate for 75mm/100mm VESA standards
- Large work area with ample space for keyboard, mouse and supplies
- Multiple entry ports for power and network cables
- 4¼ x 4¼ rear cut-out for power and data outlets
- Side ventilation openings for proper heat dissipation
- 12 CFM Exhaust Fan / Optional #291498

IT Articulating Arms



Preview EVO Arm video at:
www.itwalldesks.com/mounts.html



Preview Profile video at:
www.itwalldesks.com/mounts.html

EVO Articulating Informatics Work Station

This cutting-edge IT Articulating Arm provides the user with ergonomic control and comfort for efficient and safe workplace procedures.

- Intuitive movement - there are no buttons or levers
- EVO Arm has a 10" vertical range-of-motion for ergonomic positioning
- Integrated cable management
- Tension hinged 18" wide keyboard tray with reverse articulation
- Recommend 18" keyboard with a built-in mouse for use with this arm
- Supports monitors weighing up to 18 lbs

EVO Arm is housed in our #291556 Informatics Work Station or #291455 Premier Informatics Work Station (featured on page 3)

Total Price:

#291556-EVO with #291556 Informatics Work Station

#291556-EVO with #291455 Premier Informatics Work Station

Profile Articulating IT Station

Size: 18 1/2" W x 14" H x 4" D

This high-tech computer work station allows the user flexibility, range-of-motion and secure data control with integrated cable management.

- ARM extends 19" from wall to bring the monitor & keyboard to the user
- ARM has 9" vertical range-of-motion for ergonomic positioning
- Adjustable arm force to balance monitor for easy one-hand operation
- Tension hinged 18" wide keyboard tray with reverse articulation
- Recommend 18" keyboard with a built-in mouse for use with this ARM
- Locking security cabinet to store CPU with integral or integrated ventilation
- Security cabinet accommodates CPU's up to 14 1/2" x 12 1/4" x 3 3/8"
- Supports monitors weighing up to 18 lbs
- 18 CFM Exhaust Fan / Optional #291499



Articulating EVO IT Wall Station

This wall mount articulating computing center provides a flexible and adjustable solution for efficient point-of-care patient management.

- Intuitive movement - there are no buttons or levers
- EVO has 10" vertical range-of-motion for ergonomic positioning
- Integrated cable management
- Tension hinged 18" wide keyboard tray for reverse articulation
- Recommend 18" keyboard with a built-in mouse for use with this arm
- Supports monitors weighing up to 18 lbs



Recessed Informatics Work Station

Color: Beige & Light Grey / Custom colors also available

Construction: Heavy gauge steel

Size: 24 1/2" H x 32" W x 6" D

- Includes all features of the Informatics Work Station (#291556 - page 3)
- 2" heavy gauge flange welded around the work station to hide seams
- Only 2" of the work station protrudes from the wall

Wall Desks



#291535 Elite



#291560 Deluxe



#291568 Slim Line



Elite Wall Desks - HIPAA Compliant!

Omnimed® Elite Series of Wall Desks are framed in hardwood with a natural oak or rich cherry finish. These HIPAA-compliant desks increase patient or resident chart confidentiality and security with various key or combination lock systems.

Product	Description	Key Option	Dimensions
#291533	Elite Wall Desk - Single Size - Self Close	Flat Key	25H x 18W x 4D
#291534	Elite Wall Desk - Single Size - Manual Close	Flat Key	25H x 18W x 4D
#291535	Elite Wall Desk - Full Size - Self Close	Flat Key	25H x 30W x 4D
#291536	Elite Wall Desk - Full Size - Manual Close	Flat Key	25H x 30W x 4D
#291537	Elite Wall Desk - Full Size - Self Close	Combination Lock	25H x 30W x 4D
#291538	Elite Wall Desk - Full Size - Manual Close	Combination Lock	25H x 30W x 4D
#291539	Elite Wall Desk - Single Size - Self Close	Combination Lock	25H x 18W x 4D
#291540	Elite Wall Desk - Single Size - Manual Close	Combination Lock	25H x 18W x 4D

Deluxe Wall Desks - Great for Point-of-Care Nursing!

- Full & single size dimensions • Beige or Light Grey finish • Maintenance Free
- Available in self or manual close • Hold charts up to 3/4" • Custom colors available

Product	Description	Key Option	Dimensions
#291560	Deluxe Wall Desk - Full Size - Self Close	Flat Key	23 3/4H x 30W x 4D
#291561	Deluxe Wall Desk - Full Size - Manual Close	Flat Key	23 3/4H x 30W x 4D
#291562	Deluxe Wall Desk - Single Size - Self Close	Flat Key	23 3/4H x 18W x 4D
#291563	Deluxe Wall Desk - Single Size - Manual Close	Flat Key	23 3/4H x 18W x 4D

Slim Line Wall Desks - 3" Deep!

- Full & single size dimensions • Beige or Light Grey finish • Hold charts up to 2 1/2" thick
- Available in self or manual close • Custom colors available

Product	Description	Key Option	Dimensions
#291566	Slim Line Wall Desk - Full Size - Self Close	Flat Key	23 3/4H x 30W x 3D
#291567	Slim Line Wall Desk - Full Size - Manual Close	Flat Key	23 3/4H x 30W x 3D
#291568	Slim Line Wall Desk - Single Size - Self Close	Flat Key	23 3/4H x 18W x 3D
#291569	Slim Line Wall Desk - Single Size - Manual Close	Flat Key	23 3/4H x 18W x 3D

Wall Desk Accessory Shelves

#291564	Accessory Shelf - Full Size	25W x 3 1/2D
#291565	Accessory Shelf - Single Size	14 1/2W x 3 1/2D
#291570	Accessory Shelf - Full Size	25W x 2D
#291571	Accessory Shelf - Single Size	14 1/2W x 2D



Wall Desk Accessory Shelves

Add to the usefulness of the Elite, Deluxe and Slim Line Wall Desks with optional multi-position accessory shelves. Ideal for storing medications, supplies, patient charts and personal belongings.



Custom Color Options

Omnimed can paint any of our Wall Desks to match your facilities decor. Provide a color swatch for a quote.

Wall Desks



#291501 Anodized Aluminum



#291502 Vinyl Clad Aluminum Beige



#291503 Stainless Steel

Standard Wall Desks

For use in physician offices, exam rooms, nurses stations, ICU's, ER's, Labs and more. Writing surface easily pulls down for use. Attractive Vinyl Clad Aluminum in Beige, Anodized Aluminum and Stainless Steel. Includes two large pocket compartments for storage and two mounting clips to organize memos and notes.

Product	Description	Material	Dimensions
#291501	Standard Wall Desk	Anodized Aluminum	15H x 20 $\frac{3}{4}$ W x 3D
#291502	Standard Wall Desk	Vinyl Clad Aluminum Beige	15H x 20 $\frac{3}{4}$ W x 3D
#291503	Standard Wall Desk	Stainless Steel	15H x 20 $\frac{3}{4}$ W x 3D

Medication Distribution Cabinet

Double lock security makes the Medication Distribution Cabinet suitable for the storage of Class II and other self-administered drugs. The all steel cabinet features one fixed shelf and storage compartment. Manual fold-down door provides large work area.

- Meets Schedule 2 drug storage requirements
- Constructed of heavy-gauge steel
- Double lock security
- Each lock is keyed differently and supplied with 3 keys
- Available in Beige

Product	Description	Dimensions
#291505	Medication Distribution Cabinet	18H x 14W x 3 $\frac{1}{2}$ D



#291505

Medication Storage Cabinet

Designed to fit inside our Deluxe Wall Storage Cabinets. Ideal for storing medications at the patient's room. Provides convenience and eliminates unnecessary trips from the medication cart.

- Durable steel construction with piano hinge door
- Key lock secures contents
- Can be keyed the same as the wall desk

Product	Description	Dimensions
#291573	Med Storage Cabinet - Full Size	4 $\frac{3}{4}$ H x 24 $\frac{1}{2}$ W x 2 $\frac{1}{4}$ D
#291574	Med Storage Cabinet - Single Size	4 $\frac{3}{4}$ H x 14 $\frac{1}{2}$ W x 2 $\frac{1}{4}$ D



#291573

Shown with #291535 (see page 8)

Computer Stands



#350714
Includes Cord Reel



#350713
Includes Cord Wrap

ERGO Computer Transport Stand #350714 - #350713

This computing stand is flexible and ergonomic.

- Monitor arm tilts to provide the perfect viewing angle
- Keyboard tilts +/- 10 degrees for ergonomic control and safety
- CPU holder adjusts from 1 3/4"W x 9 3/4"D x 9"H to 6 1/2"W x 18"D x 16 1/2"H for various size CPUs
- VESA monitor mounting plate
- CPU is protected using high security fasteners
- 10" medical grade cord reel with 3 power outlets (350714 only)
- Large work area for mouse and materials
- Heavy 5-leg aluminum base for stability
- 3" rubber wheel casters provide smooth transport
- Stand column conceals and manages cables



#350300

Computer Monitor Stand

- #350300
Shown with optional:
- Wheel Ring Handle
 - Poly Tray
 - Adjustable Keyboard Tray



#350305

Adjustable Laptop Transport Stand #350305

This mobile laptop station provides real time patient administration.

- Tray features dual handles for transport and height adjustment
- Depress foot pedal to adjust surface height from 35" to 43" for standing or seated use
- Heavy 5-leg base for stability
- 3" rubber wheel casters provide smooth and quiet transport



#350306

Security Laptop Stand #350306

This mobile computing station is the solution for secure patient point-of-care management.

- Dual locking work surface keeps laptop and data secure and provides a large work area
- Work surface adjusts from 35" to 45"
- Hand levers operate a gas spring lift to adjust height for sitting or standing use
- Heavy 5-leg base for safety and stability
- 3" rubber wheel casters for quiet use



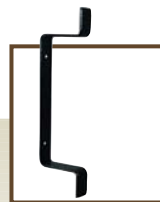
Security Laptop Stand video at: <http://www.omnimedbeam.com>

Stand Accessories

Omnimed stands can be customized with accessories to enhance your mobile computing experience.



Power Strip
#350030



Cord Wrap
#350033



Base Weight
#350036



Basket Adapter
#741332



Adjustable Keyboard Tray
#350040



Wheel Ring Handle
#350051



Poly Tray
#350055



Transport Basket
#350002
10H x 13W x 4D • 45.00

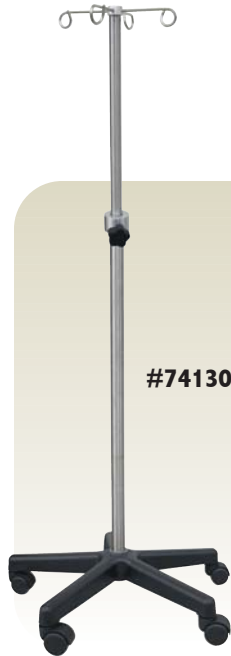
Transport Stands



#741300

Heavy Weight“ Infusion Stand #741300

- Holds up to four 5,000 cc containers
- Manually raises to a maximum height of 9’
- Unique “Air-Glide System” controls descent of pole when unlocked



#741301

Jr. Heavy Weight“ Infusion Stand #741301

- 4 rams horn hooks secure containers
- Manually raises to a maximum height of 7’
- Unique “Air-Glide System” controls descent of pole when unlocked



#350000

Beam[®] Stand #350000

- Sturdy 5-leg aluminum base provides excellent stability
- 3” silent rolling rubber casters assure smooth mobility
- 42” floor to shelf height
- Optional basket available
- Stainless Steel Shelf - 16 $\frac{1}{4}$ L x 12 $\frac{3}{4}$ W



#350010

Doppler Instrument Stand #350010

- Holster measures 1 $\frac{1}{2}$ H x 2 $\frac{3}{4}$ W x 5L
- A 5-leg poly base provides stability
- Rolling dual wheel casters add mobility
- 41” high
- Optional basket to store monitor, earpiece or other items



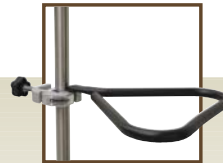
Omni Clamp
#741325

Omni Clamping Accessory System

Simply attach the Omni Clamp to any I.V. or Infusion Stand and you’re ready to mount accessories such as a Transport Handle, Oxygen Cylinder Holder, Multi Infusion Pump Post, Stat Tray, Stat Hanger and Accessory Hook. Unique dual slotted clamp design allows multiple accessories to attach to one clamp. Omni Clamp fits pole diameters up to 2”.



Multi Infusion Pump Post
#741326



Transport Handle
#741327



Stat Tray
#741330



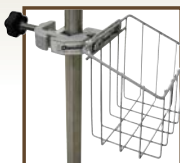
Stat Hanger
#741331



Accessory Hook
#741328



Oxygen Cylinder Holder
#741329



Basket Adapter
#741332



Omni Clamp
#741325

Power Lifter[®]

The Power Lifter[®] I and II provide healthcare workers with hazard-free, ergonomic lifting of solutions during surgical procedures. These irrigation stands neutralize bag weight to ease raising and lowering, hence preventing workplace hazards. Great for Arthroscopic, Cystoscopic, Orthopedic and TUR surgeries and procedures! These units are simple to use and can be easily operated by one person.

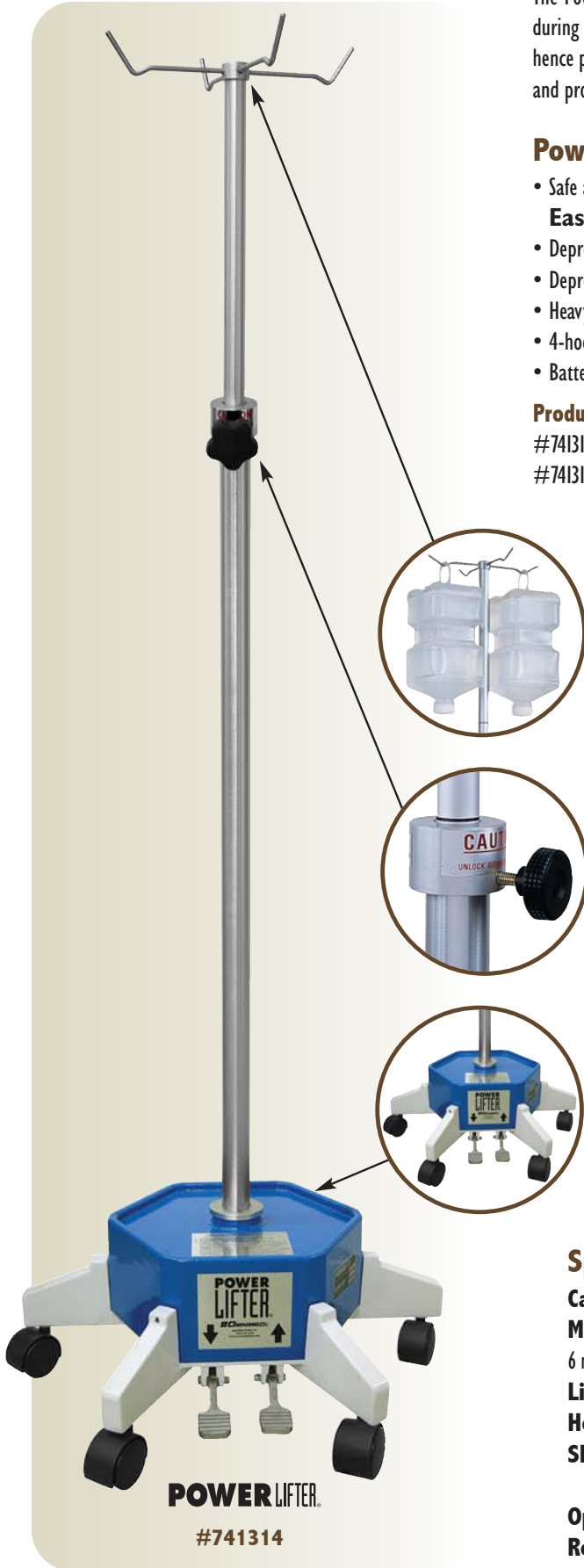
Power Lifter[®] - Single Column System

- Safe air-operated system featuring an internal, rechargeable 12V battery

Easy to operate:

- Depress the "UP" foot pedal to raise 5,000 cc per hook (total 40 lbs) to a height of 9'
- Depress the "DOWN" foot pedal to smoothly lower solution containers, making changeovers a snap
- Heavy cast aluminum base provides stability at maximum and minimum capacity
- 4-hook independent hanger assembly safely holds a total of 20,000 cc irrigation containers
- Battery operated convenience eliminates hazardous electric cords on O.R. floor

Product	Description	Weight	Height
#741314	... Power Lifter [®] Irrigation Stand	57 lbs.	Max 9'
#741316	... Low Voltage Light Kit		



The stainless hanger assembly accommodates four irrigation containers up to 5000 cc each. Easy on and off hooks make solution change easy and quick.

The aluminum locking collar is designed for strength to secure the pole in its raised position. An inner sleeve protects the inner tube against marring.

The six nylon non-conductive dual wheel casters support the base and allow smooth transport with minimal effort. The base features a reservoir to collect fluid and reduce spillage on the O.R. floor.

Specifications for Power Lifter[®] I & II:

Capacity - Up to four 5000 cc containers (one bag per hook)

Material - Anodized aluminum poles / Stainless steel hanger assembly / Cast aluminum base
6 non-conductive casters

Lift Mechanism - Pneumatic

Height - Min. 5' 7" from floor to top of hanger - Max. 9' from floor to top of hanger

Shipping Weight - Power Lifter[®] / Base - 48 lbs Pole assembly - 8 lbs

Power Lifter[®] II / Base - 48 lbs Pole assembly - 32 lbs

Operating Voltage - 12V DC (nom.)

Recharge Power - 115V 60Hz, approx. 180MA

POWER LIFTER.
#741314

Power Lifter II [□]

Power Lifter[□] II - Dual Column System

- Safe air-operated system featuring an internal, rechargeable 12V battery
- Easy to operate:**
- Depress the “UP” foot pedal to raise 5,000 cc per hook (total 40 lbs) to a height of 9’
- Depress the “DOWN” foot pedal to smoothly lower solution containers, making changeovers a snap
- Heavy cast aluminum base provides stability at maximum and minimum capacity
- 2-column lift system holds a total of 20,000 cc irrigation containers (two 5,000 cc bags per column)
- Battery operation eliminates hazardous electric cords on OR floor

Product	Description	Weight	Height
#741315	... Power Lifter [®] Irrigation Stand.....	57 lbs.....	Max 9’
#741316	... Low Voltage Light Kit.....		



Preview Power Lifter[®] II video at:
<http://www.omnimedbeam.com>



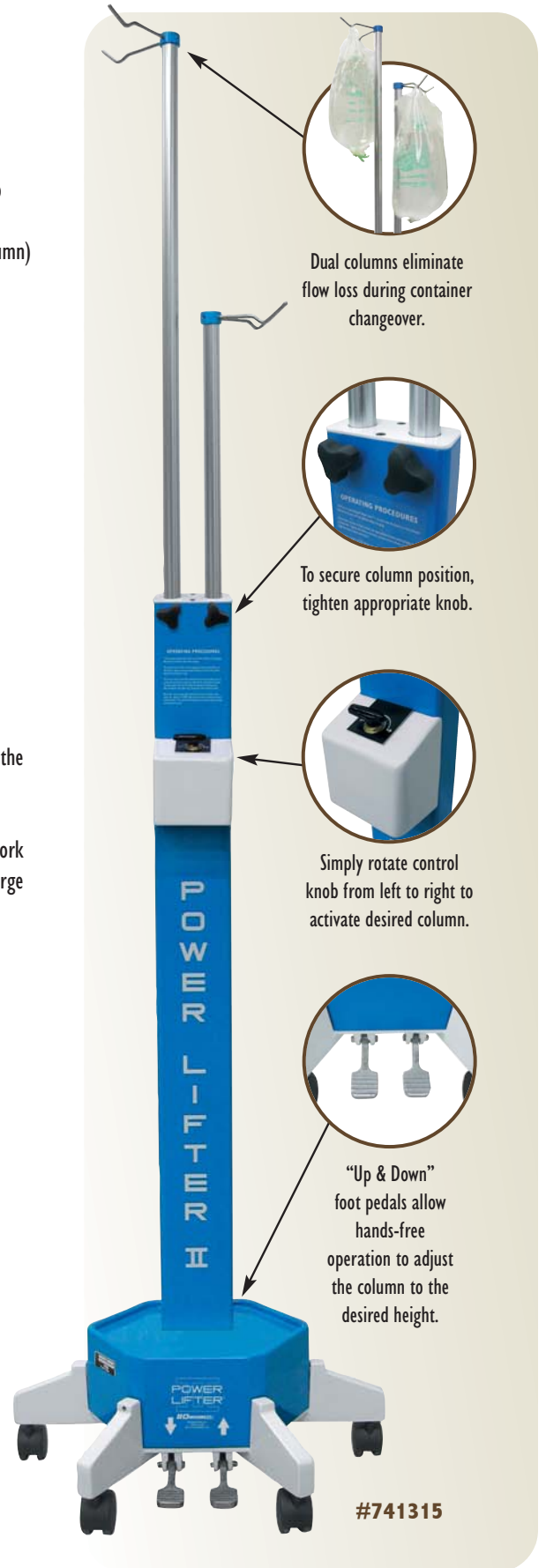
Keeps O.R. Safe & Operable

The battery charger plugs into the access port on the base of the POWER LIFTER[®] & POWER LIFTER[®] II.

The POWER LIFTER[®] & POWER LIFTER[®] II will not work while the unit is plugged in. We suggest that a recharge schedule be established to prolong the battery life.



Order your **FREE** CD Rom for additional information on our Power Lifter[®] products at info@omnimedbeam.com



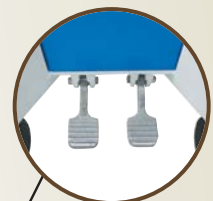
Dual columns eliminate flow loss during container changeover.



To secure column position, tighten appropriate knob.



Simply rotate control knob from left to right to activate desired column.



“Up & Down” foot pedals allow hands-free operation to adjust the column to the desired height.

#741315

Narcotic Cabinets

Omnimed's narcotic cabinets provide the security healthcare facilities need to combat drug theft, supply secure patient drug dispensing and control costs. Our broad range of cabinets are trusted by medical professionals nationwide and are durable, versatile and secure. They comply with Dept. of Justice Drug Enforcement and Joint Commission requirements. Whatever your requirements, we have a narcotic cabinet to meet your drug storage needs.



#181401

Single Door Narcotic Cabinets

- Double wafer lock security • Three keys per lock
- Meets Schedule 2 drug storage requirements
- Adjustable shelves • Ambi-top for left or right hinge door mounting

Product Description

#181401 . . . Narcotic Control Cabinet	15H x 11W x 4D
#181451 . . . Narcotic Control Cabinet	15H x 11W x 8D
#181481 . . . Narcotic Control Cabinet	24H x 16W x 8D

Dimensions

A Cabinet for Every Drug Schedule

Controlled drugs are rated in the order of their abuse risk and placed in Schedules by the Federal Drug Enforcement Administration (DEA). Drugs with the highest abuse potential are placed in Schedule I, and those with the lowest abuse potential are in Schedule 5. Whatever your Schedule, we have a narcotic cabinet to meet your drug storage needs.

	Medical Use	Abuse Risk	Drug	Cabinet Type
Schedule I	No safe, accepted medical use in the US	High	Heroin, Marijuana LSD, PCP, Crack Cocaine	Double Door Double Lock E-Lock
Schedule 2	Safe, accepted medical use in the US	High	Morphine, Cocaine, Percodan, Ritalin & Dexedrine	Double Door Double Lock E-Lock
Schedule 3,4,5	Safe, accepted medical use in the US	Medium (less than schedule 1 & 2)	Acetaminophen with Codeine, Paregoric, Vicodin, Darvon & Talwin	Double Door Double Lock E-Lock Single Door Economy



#181601

#181601

#181680

#181601
Inner Door-Flat Key

Double Door Narcotic Cabinets

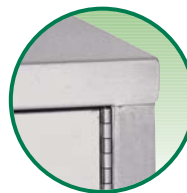
- Ambi-top for left or right hinge door mounting • Double door security
- Stainless steel construction • Triple bolt wafer lock on outer door
- Each lock keyed separately with three keys per lock

Product Description

#181501 . . . Mini Narcotic Cabinet	9H x 8W x 5½D
#181502 . . . Narcotic Control Cabinet	8H x 16W x 8D
#181601 . . . Narcotic Control Cabinet	15H x 11W x 4D
#181650 . . . Narcotic Cabinet	15H x 11W x 8D with Combination Lock
#181651 . . . Narcotic Control Cabinet	15H x 11W x 8D
#181680 . . . Narcotic Cabinet	24H x 16W x 8D with Combination Lock
#181681 . . . Narcotic Control Cabinet	24H x 16W x 8D
#181683 . . . Maxi Narcotic Cabinet	30H x 22W x 12D

Dimensions

Cabinet Features



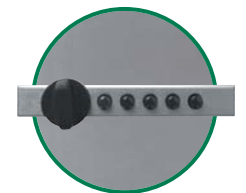
Ambi-Top

Cabinet top reverses for left or right hinge door mounting.



Triple Bolt Lock

Promotes content protection and security.



Locks

Flat key, wafer key, push button combination & electronic lock.

Narcotic Cabinets



Economy Narcotic Cabinets

- Double door with individual lock security • Adjustable shelves
- Heavy-gauge steel construction • Available in four sizes
- Ambi-top for left or right hinge door mounting • Available in Beige
- Meets all Schedule drug storage requirements
- Ideal for wall mount point-of-care convenience

Product Description

Dimensions

#182100 . . . Economy Mini Narcotic Cabinet	9H x 8W x 5½D
#182125 . . . Economy Narcotic Cabinet	15H x 11W x 4D
#182150 . . . Economy Narcotic Cabinet	15H x 11W x 8D
#182175 . . . Economy Narcotic Cabinet	24H x 16W x 8D

Corner Narcotic Cabinets

Available in single door style with all of the features that have made the BEAM® Narcotic Cabinet an “Industry Standard.”

- Double wafer lock security • Three keys per lock
- Meets Schedule 3, 4 & 5 drug storage requirements
- Adjustable shelves • Ambi-top for left or right hinge door mounting

Product Description

Dimensions

#181765 . . . Corner Narcotic Cabinet	24H x 24W x 8D
---	----------------



Twin Narcotic Cabinets

Twin Narcotic Cabinets combine two standard units side-by-side with single cap and fascia.

Product Description

Dimensions

#181801 . . . Twin Narcotic Cabinet	15H x 22W x 4D
#181851 . . . Twin Narcotic Cabinet	15H x 22W x 8D
#181881 . . . Twin Narcotic Cabinet	24H x 32W x 8D

Pass-Thru Cabinets

Designed for drug convenience. Each door is hinged with a spring closure. Adjustable trim flange allows mounting to wall thickness of 3½”- 5½”. Specify key lock or thumb latch.

Product Description

Dimensions

#181785 . . . Pass-Thru Cabinet - Keylock	12H x 11½W x 6
#181785T . . . Pass-Thru Cabinet - Thumb Latch	12H x 11½W x 6D

Point-of-Care Wall Storage Cabinets

New!



#291625

Shown with #291556 page 3



#291610 Closed

#291621



#291610 Open



Thumb Latch



Flat Key Lock

Point-of-Care Cabinet #291625

This cabinet is the perfect “add-on” solution for storing and protecting supplies, medications and resident items. It easily joins with any of our 4” or 6” deep IT computer work stations to provide secure storage and immediate access to the tools medical professionals need to properly treat patients.

Color: Beige & Light Grey



Construction: Heavy gauge steel

Size: 24H x 6W x 4D

- Multiple mounting options integrate seamlessly with any 4” or 6” deep wall mounts
- Ambidextrous door mount for multiple opening set-ups
- Flat key lock with 3 keys per lock or thumb latch
- Multiple cabinets keyed alike at no additional charge
- Three adjustable shelves

Product Description

Dimensions

#291625 Point-of-Care Cabinet 24H x 6W x 4D



#291625 Closed



#291625 Open

Wall Storage Cabinets

Secure storage is one of the most crucial requirements for healthcare facilities. Omnimed, Inc’s wall storage cabinets provide the perfect solution for protecting medical supplies, storing patient and resident personal belongings and keeping pharmaceuticals safe.

- Constructed of heavy gauge steel
- Ambi-top for left or right hinge door mounting
- 4” deep models contains one adjustable shelf
- 8” deep models contains two adjustable shelves
- Flat key lock with 3 keys per lock or thumb latch
- Multiple cabinets keyed alike at no additional charge

Specify Color:



Product Description

Dimensions

#291609 Wall Storage Cabinet 12H x 9W x 4D
 #291610 Wall Storage Cabinet 16¾H x 16W x 4D
 #291611 Wall Storage Cabinet 16¾H x 16W x 8D
 #291621 Wall Storage Cabinet 26¾H x 16W x 8D
 #291618-1 . . Wall Storage Shelf 16W x 4D
 #291618-2 . . Wall Storage Shelf 16W x 8D

E-Lock Security Cabinets



Audit Digital Lock

#181482



E-Lock with Door Handle

#291600

Deluxe Narcotic Cabinet with Audit Digital E-Lock

Prevent drug diversion with the audit digital E-lock by providing audit trails of user access into cabinets. Software package and instant program key are required for usage. Features of cabinet include:

- High security Audit Digital E-lock
- Single door
- 4 adjustable shelves
- Stainless steel construction
- Cabinet pull handle for easy open & close

Product Description

#181482 . . . Deluxe Narcotic Cabinet 24H x 16W x 8D

Dimensions

Patient Security Cabinet with Non-Audit Digital E-lock

This cabinet provides secure personal item storage with lots of features.

- Non-audit digital reprogrammable lock
- Single door
- Two sizes
- Heavy-gauge beige painted steel or light grey
- Adjustable shelves

Product Description

#291600 . . . Patient Security Cabinet 16½H x 16W x 4D

#291601 . . . Patient Security Cabinet 16½H x 16W x 8D

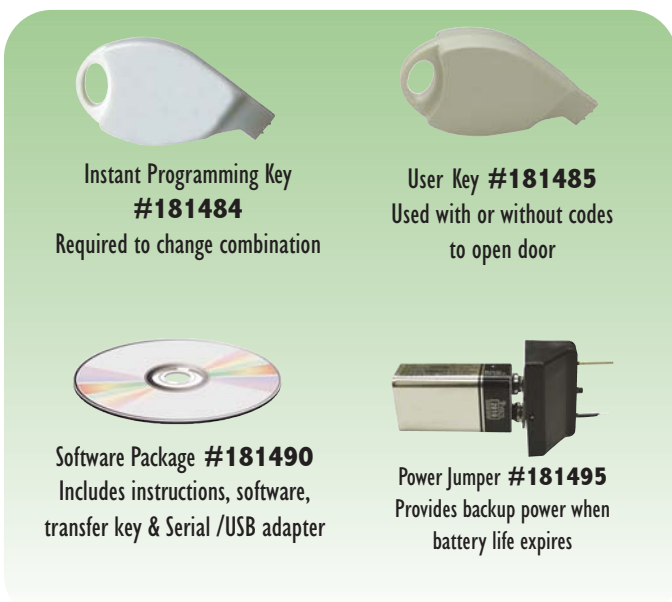
Dimensions

About the Audit Digital E-lock:

This lock provides shared usage to cabinet contents with a four to eight digit individualized programmable code. The software and lock can accommodate up to 500 users. A report can be generated detailing activity for these users. The software allows the administrator to set daily parameters for individual users, print usage reports and run audit trails.

About the Non-Audit Lock:

The non-Audit E-lock provides secure keyless entry to cabinets contents. The lock can be easily reprogrammed for individual patient access. A Bypass Key is available to change combination or access cabinet if access code is lost.



Instant Programming Key
#181484

Required to change combination



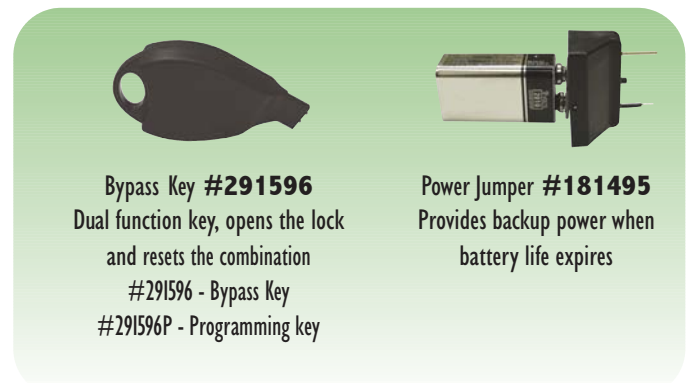
User Key #181485
Used with or without codes
to open door



Software Package #181490
Includes instructions, software,
transfer key & Serial /USB adapter



Power Jumper #181495
Provides backup power when
battery life expires



Bypass Key #291596
Dual function key, opens the lock
and resets the combination
#291596 - Bypass Key
#291596P - Programming key



Power Jumper #181495
Provides backup power when
battery life expires



**Call for details about
customizing cabinets
with our E-Lock**

Room Identification Flag System

6-Flag Room Identification Flag System

Omnimed, Inc.'s high quality Room ID Flag Systems organize your office and workplace. They assure confidentiality for your patients while promoting staff efficiency to keep operations running smoothly.

- Great for exam rooms, clinics, surgery centers and emergency areas
- Standard 6-Flag System features 6 highly visible flags in 8" or 4" styles
- Constructed of durable painted aluminum for a vibrant appearance
- Flags swing 180 degrees and can be inverted to reverse the color order
- Lightweight and easy to mount
- Standard color order is red, blue, orange, green, yellow and grey
- Non-electrical, quiet operation

Product Description Dimensions 1-25 26-49 50+

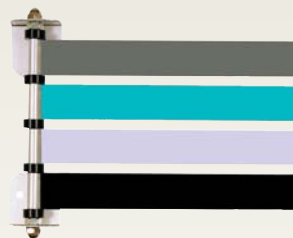
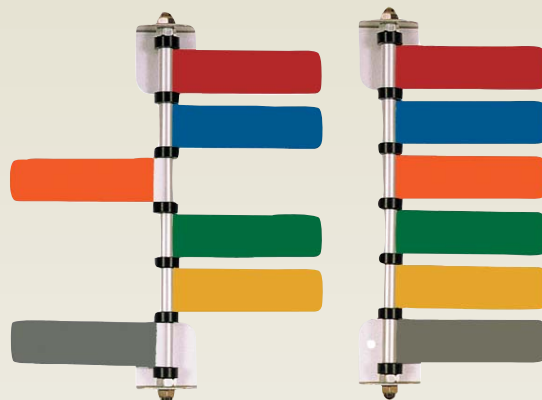
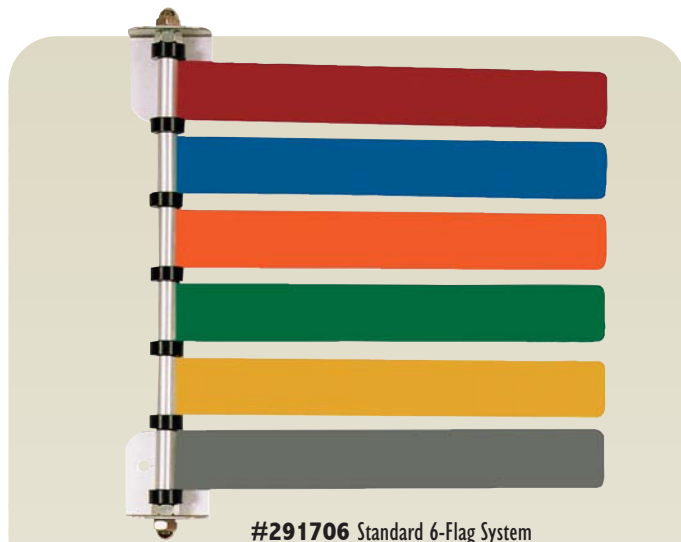
#291706 .. 6-Flag System Flags	8"
#291708 .. 6-Flag System Flags	4"

Custom Room Identification Flag System

Customize your flag system to meet your specific needs. Choose 1-12 flags from the color palette in 4" or 8" sizes.

Product Description Dimensions 1-25 26-49 50+

#291711 .. Custom 1-Flag System	8"
#291712 .. Custom 2-Flag System	8"
#291713 .. Custom 3-Flag System	8"
#291714 .. Custom 4-Flag System	8"
#291715 .. Custom 5-Flag System	8"
#291716 .. Custom 6-Flag System	8"
#291717 .. Custom 7-Flag System	8"
#291718 .. Custom 8-Flag System	8"
#291719 .. Custom 9-Flag System	8"
#291720 .. Custom 10-Flag System	8"
#291721 .. Custom 11-Flag System	8"
#291722 .. Custom 12-Flag System	8"
#291725 .. Flag Panel Only	8"
#291731 .. Custom 1-Flag System	4"
#291732 .. Custom 2-Flag System	4"
#291733 .. Custom 3-Flag System	4"
#291734 .. Custom 4-Flag System	4"
#291735 .. Custom 5-Flag System	4"
#291736 .. Custom 6-Flag System	4"
#291737 .. Custom 7-Flag System	4"
#291738 .. Custom 8-Flag System	4"
#291739 .. Custom 9-Flag System	4"
#291740 .. Custom 10-Flag System	4"
#291741 .. Custom 11-Flag System	4"
#291742 .. Custom 12-Flag System	4"
#291750 .. Flag Panel Only	4"



12 Colors to choose from:

Green	Red
Grey	Yellow
Turquoise	Beige
White	Blue
Black	Orange
Lavender	Mauve



Custom Flag System
Designed to meet your needs

Maximize protection and prevent contamination by using these high-quality Glove Box Holders in convenient locations.

Glove Box Holders



Metal Glove Box Holders

Product	Description	Dimension
#305300	Glove Box Holder - Single - 2 Pack Pkg.	6 1/4" H x 10" W x 4" D Stainless Steel
#305301	Glove Box Holder - Double - 2 Pack Pkg.	11" H x 11" W x 4" D Stainless Steel
#305302	Glove Box Holder - Triple - 2 Pack Pkg.	15" H x 11" W x 4" D Stainless Steel
#305310	Glove Box Holder - Single - 2 Pack Pkg.	6 1/4" H x 10" W x 4" D Anodized Aluminum

Adjustable Glove Box Holders

Product	Description	Package
#305320	Adjustable Glove Box Holder - Single	2 Pack Pkg Anodized Aluminum
#305350	Adjustable Glove Box Holder - Single	10 Pack Pkg Plated Steel



Wire Glove Box Holders

Product	Description	Dimensions
#305325	Omni Glove Box Holder	10 1/4" H x 4" W x 3" D Single
#305375	Economy Wire Glove Box Holder	16" H x 11 1/2" W x 4 1/2" D Triple - 2 Pack Pkg
#305380	Deluxe Wire Glove Box Holder	11" H x 17" W x 4 1/2" D Triple - 2-Pack Pkg

Clear PETG Glove Box Holders

Recyclable & ECO friendly, these dispensers are tougher than acrylic to provide many years of service. Easy to clean and mount.

Product	Description	Dimensions
#305361	Clear PETG Glove Box Holder	11 1/2" W x 10 1/2" H x 4 1/2" D Double
#305362	Clear PETG Glove Box Holder	11 1/2" W x 15 1/2" H x 4 1/2" D Triple

Stat ID Beam Bands / Locks, Links & Seals



#291301



#291301
Easy to Apply



Surface Accepts Writing,
Typing or Embossing

Stat I.D. Interim Identification Bracelet

The bracelet surface accepts writing, typing or embossing and resists tearing and smearing even when wet. Ideal for emergency departments, outpatient clinics, disaster drills and ambulances. Packaged 250 to a dispenser box.

Product Description	Package
#291301 . . . Stat I.D. Bands	250/Box



#291305

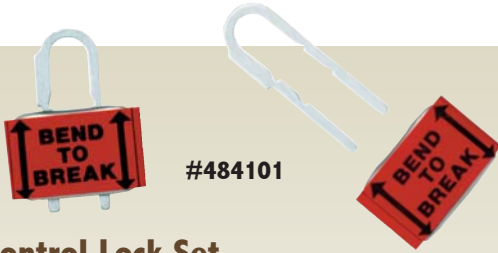


#291305 - #291311
Easy to Apply, Peel Backing

Beam Band

Peel backing at tapered end and place Beam Band on wrist. Design eliminates contact with skin or hair. Flat sheet designed for typewriter, writing or embossing and resists tearing and smearing even when wet. Ideal for emergency departments, outpatient clinics, disaster drills and ambulances.

Product Description	Package
#291305 . . . Beam Band	250/Box
#291311 . . . Beam Band	(100 Sheets of 11) 1100/Box



#484101

Safety Control Lock Set

This unique, disposable closure system assures that contents are secured. No scissors or tools needed. Once locked, it must be broken to be removed.

Product Description	Package
#484101 . . Safety Control Lock Set	100 Locks/300 Links
#484102 . . Locks Only	100 Locks
#484103 . . Links Only	300 Links
#484111 . . Mini Pak	50 Locks/100 Links
#484112 . . Mini Pak	50 Locks
#484113 . . Mini Pak	100 Links



with Numbers #484107

without Numbers #484108

Safety Control Seals

Plastic closure system. This unique seal is designed for narrow slot opening. No scissors or tools needed.

Product Description	Package
#484107 . . Safety Control Seals - with Numbers	100/Package
#484108 . . Safety Control Seals - without Numbers	100/Package

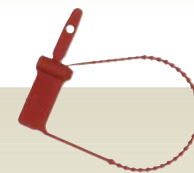


#484130

Sure Strip Safety Seal

Features a minimum of 9 locking positions. Simply slide narrow end through item opening and then through barrel to lock.

Product Description	Package
#484130 . . Sure Strip Safety Seal - Red	100/Package



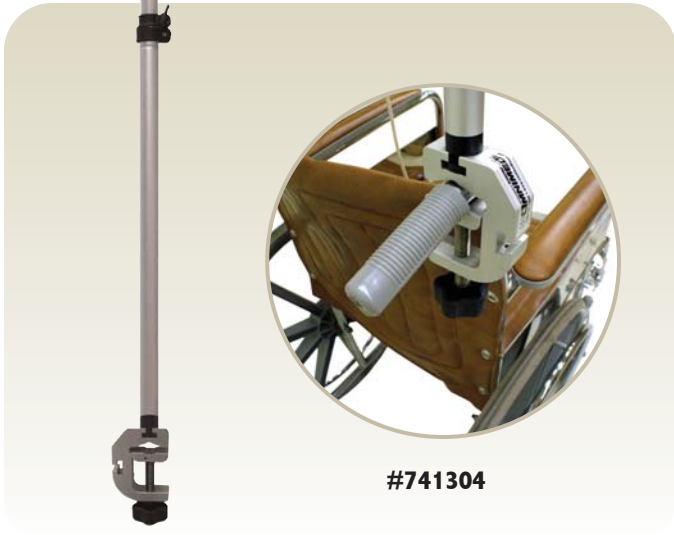
#484125

Padlock Control Seal

The tapered thickness of the plastic Padlock Control Seal allows you to control the break strength from easy to medium to hard. No tools required. Seals must be broken to open.

Product Description	Package
#484125 . . Padlock Control Seal	100/Package

Bedpan Holders



#741304

Mobile I.V. Pole

Ideal for stretchers, countertops or mobile stands. Telescopes from 31" to 47". Clamps onto any shape from 1/2" to 1 1/4". Works on flat or round surfaces. Contains a locking handle for theft prevention. Dual Rams Hooks nest inside for storage. Easy to relocate.

Product Description

#741304 . . . Mobile I.V. Pole



Wire Utility Rack

The universal size and design of our Wire Utility Rack is ideal for wall mounting to hold bedpans, chartbinders or other information and equipment.

Product Description

Dimensions

#303000 . . . Wireless Utility Rack 13W x 6H x 6D



#303512

Single Bedpan Rack

Fastens to wall or bedside cabinet. Securely holds one bedpan.

Product Description

Dimensions

#303012 . . . Single Bedpan Rack 12W x 11H

Stainless Steel

#303512 . . . Single Bedpan Rack 14W x 12H

Aluminum



#303526

Double Bedpan Rack

Holds two bedpans of any type. Prevents cross contamination and easily mounts to any surface.

Product Description

Dimensions

#303026 . . . Double Bedpan Rack 28W x 12H

Stainless Steel

#303526 . . . Double Bedpan Rack 28W x 12H

Aluminum

Chart Racks

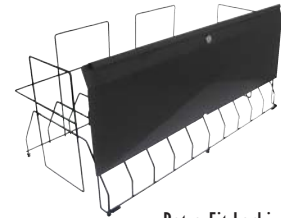


#261035 Shown with #260004

Retro-Fit Locking Panel

HIPAA Compliant

Ensure patient security and protect patient privacy with our Retro-Fit Locking Panel. These panels can be easily installed on Omnicart Vertical and Cabinet Style chart racks. Available in beige, brown or light grey with heavy duty lock and three keys.



Retro-Fit Locking Panel
#261035

Omicart Vertical Chart Racks

Omicarts® offer durability, value and versatility. All Omnicart® Chart Racks are shipped assembled and feature a cap shelf for additional storage.

- Available in Beige, Woodgrain & Lt. Grey • Welded steel frame • Holds 1", 1½", 2" & 2½" binders
- Capacity ranges from 5-60 charts • 4" diameter rubber casters - 2 locking • 7-year guarantee



Product	Description	Shelves	Dimensions	Capacity	Spine Size
#260012	Mini Omnicart - Vertical	3 Shelves	43¾H x 19W x 17D	5 Capacity - 1 x 5	Up to 2¼
#260013	Mini Omnicart - Vertical	3 Shelves	43¾H x 19W x 17D	10 Capacity - 2 x 5	Up to 2¼
#260014	Mini Omnicart - Vertical	3 Shelves	55¾H x 19W x 17D	15 Capacity - 3 x 5	Up to 2¼
#260001	Standard Omnicart - Vertical	3 Shelves	43¾H x 34½W x 17D	10 Capacity - 1 x 10	Up to 2¼
#260002	Standard Omnicart - Vertical	3 Shelves	43¾H x 34½W x 17D	20 Capacity - 2 x 10	Up to 2¼
#260003	Standard Omnicart - Vertical	4 Shelves	55¾H x 34½W x 17D	30 Capacity - 3 x 10	Up to 2¼
#260004	Standard Omnicart - Vertical	5 Shelves	70¾H x 34½W x 17D	40 Capacity - 4 x 10	Up to 2¼
#260007	Large Omnicart - Vertical	3 Shelves	43¾H x 49¾W x 17D	15 Capacity - 1 x 15	Up to 2¼
#260008	Large Omnicart - Vertical	3 Shelves	43¾H x 49¾W x 17D	30 Capacity - 2 x 15	Up to 2¼
#260009	Large Omnicart - Vertical	4 Shelves	55¾H x 49¾W x 17D	45 Capacity - 3 x 15	Up to 2¼
#260010	Large Omnicart - Vertical	5 Shelves	70¾H x 49¾W x 17D	60 Capacity - 4 x 15	Up to 2¼
#261207	Big Beam Standard Omnicart - Vertical	3 Shelves	43¾H x 34½W x 17D	8 Capacity - 1 x 8	Up to 3½
#261214	Big Beam Standard Omnicart - Vertical	3 Shelves	43¾H x 34½W x 17D	16 Capacity - 2 x 8	Up to 3½
#261221	Big Beam Standard Omnicart - Vertical	4 Shelves	55¾H x 34½W x 17D	24 Capacity - 3 x 8	Up to 3½
#261228	Big Beam Standard Omnicart - Vertical	5 Shelves	70¾H x 34½W x 17D	32 Capacity - 4 x 8	Up to 3½
#261311	Big Beam Standard Omnicart - Vertical	3 Shelves	43¾H x 49¾W x 17D	12 Capacity - 1 x 12	Up to 3½
#261322	Big Beam Standard Omnicart - Vertical	3 Shelves	43¾H x 49¾W x 17D	24 Capacity - 2 x 12	Up to 3½
#261333	Big Beam Standard Omnicart - Vertical	4 Shelves	55¾H x 49¾W x 17D	36 Capacity - 3 x 12	Up to 3½
#261444	Big Beam Standard Omnicart - Vertical	5 Shelves	70¾H x 49¾W x 17D	48 Capacity - 4 x 12	Up to 3½
#261035	Retro Fit Locking Panel - 10 Capacity		34½W		
#261036	Retro Fit Locking Panel - 15 Capacity		49¾W		
#261038	Retro Fit Locking Panel - 8 Capacity		34½W		
#261039	Retro Fit Locking Panel - 12 Capacity		49¾W		
#264004	Rubber Bumpers - 4/Pkg		5" Diameter		

Chart Racks



Omniscart[®] Cabinet Style Vertical Chart Racks

Omniscart[®] Cabinet Style Vertical Chart Racks enhance the aesthetics of your chart storage areas. Fully enclosed top, side and back panels protect your charts from general access and accept optional Retractable Locking Panels, for lock and key security to patient information.

- Available in Beige, Woodgrain & Lt. Grey • Welded steel frame • Holds 1", 1½", 2" & 2½" binders
- Capacity ranges from 10-60 charts • 4" diameter rubber casters - 2 locking • 7-year guarantee



Locking Panels - HIPAA Compliant

Omnimed's Cabinet Style and Flat Storage Chart Racks can be installed with locking panels to safeguard your patient's medical information. These panels need to be factory installed and ordered with desired rack.

Product	Description	Size
#261030	Retractable Locking Panel	34¼W
#264598	Flat Storage Locking Panel	for 53¾ High Racks

Product	Description	Shelves	Dimensions	Capacity	Spine Size
#260110	Standard Cabinet Omniscart - Vertical	3 Shelves	43¾H x 34½W x 17D	10 Cap/1x10	Up to 2¼
#260120	Standard Cabinet Omniscart - Vertical	3 Shelves	43¾H x 34½W x 17D	20 Cap/2x10	Up to 2¼
#260130	Standard Cabinet Omniscart - Vertical	4 Shelves	55½H x 34½W x 17D	30 Cap/3x10	Up to 2¼
#260140	Standard Cabinet Omniscart - Vertical	5 Shelves	70½H x 34½W x 17D	40 Cap/4x10	Up to 2¼
#260135	Large Cabinet Omniscart - Vertical	3 Shelves	43¾H x 49¾W x 17D	30 Cap/2x15	Up to 2¼
#260145	Large Cabinet Omniscart - Vertical	4 Shelves	55½H x 49¾W x 17D	45 Cap/3x15	Up to 2¼
#260160	Large Cabinet Omniscart - Vertical	5 Shelves	70½H x 49¾W x 17D	60 Cap/4x15	Up to 2¼
#261508	Big Beam Cabinet Omniscart - Vertical	3 Shelves	43¾H x 34½W x 17D	8 Cap/1x8	Up to 3½
#261516	Big Beam Cabinet Omniscart - Vertical	3 Shelves	43¾H x 34½W x 17D	16 Cap/2x8	Up to 3½
#261524	Big Beam Cabinet Omniscart - Vertical	4 Shelves	55½H x 34½W x 17D	24 Cap/3x8	Up to 3½
#261526	Big Beam Cabinet Omniscart - Vertical	5 Shelves	70½H x 34½W x 17D	32 Cap/4x8	Up to 3½
#261530	Big Beam Cabinet Omniscart - Vertical	3 Shelves	43¾H x 49¾W x 17D	24 Cap/2x12	Up to 3½
#261536	Big Beam Cabinet Omniscart - Vertical	4 Shelves	55½H x 49¾W x 17D	36 Cap/3x12	Up to 3½
#261548	Big Beam Cabinet Omniscart - Vertical	5 Shelves	70½H x 49¾W x 17D	48 Cap/4x12	Up to 3½
#261030	Retractable Locking Panels		34¼W		
#261031	Retractable Locking Panels		49¾W		
#264598	Flat Storage Locking Panel		For 53¾" High Racks		
#264599	Flat Storage Locking Panel		For 72½" High Racks		
#264004	Rubber Bumpers - 4/Pkg.		5" Diameter		

Chart Racks



Omicart[®] Flat Storage Racks

Omicart[®] Flat Storage Racks have a universal design that allows storage of top and side open chartbinders in the same rack. The attractive welded steel frame and coated wire organizers provide long lasting durability.

- Holds 1", 1½", 2" & 2½" binders
- Capacity ranges from 8-60 charts
- Shipped assembled
- 7-year guarantee

Product	Description	Dimensions	Capacity	Spine Size
#264410	Flat Storage	53½H x 14½W x 15D	10 Cap/1x10	Up to 2¾
#264420	Flat Storage	53½H x 27W x 15D	20 Cap/2x10	Up to 2¾
#264430	Flat Storage	53½H x 41W x 15D	30 Cap/3x10	Up to 2¾
#264440	Flat Storage	53½H x 54W x 15D	40 Cap/4x10	Up to 2¾
#264515	Flat Storage	72½H x 14½W x 15D	15 Cap/1x15	Up to 2¾
#264530	Flat Storage	72½H x 27W x 15D	30 Cap/2x15	Up to 2¾
#264545	Flat Storage	72½H x 41W x 15D	45 Cap/3x15	Up to 2¾
#264560	Flat Storage	72½H x 54W x 15D	60 Cap/4x15	Up to 3½
#264580	Big Beam	53½H x 14½W x 15D	8 Cap/1x8	Up to 3½
#264581	Big Beam	53½H x 27W x 15D	16 Cap/2x8	Up to 3½
#264582	Big Beam	53½H x 41W x 15D	24 Cap/3x8	Up to 3½
#264583	Big Beam	53½H x 54W x 15D	32 Cap/4x8	Up to 3½
#264586	Big Beam	72½H x 14½W x 15D	12 Cap/1x12	Up to 3½
#264587	Big Beam	72½H x 27W x 15D	24 Cap/2x12	Up to 3½
#264588	Big Beam	72½H x 41W x 15D	36 Cap/3x12	Up to 3½
#264589	Big Beam	72½H x 54W x 15D	48 Cap/4x12	Up to 3½

Omicart[®] Cabinet Style Flat Storage Racks

Omicart[®] Cabinet Style Flat Storage Racks enhance the aesthetics of your chart storage areas. Fully enclosed top, side and back panels protect charts and promote record confidentiality. Consider optional locking panels (see page 23) for HIPAA security of patient information.

- Holds 1", 1½", 2" & 2½" binders
- Capacity ranges from 8-60 charts
- Ships assembled
- 7-year guarantee

Product	Description	Dimensions	Capacity	Spine Size
#264561	Cabinet Flat	53½H x 14½W x 15D	10 Cap/1x10	Up to 2¾
#264562	Cabinet Flat	53½H x 27W x 15D	20 Cap/2x10	Up to 2¾
#264563	Cabinet Flat	53½H x 41W x 15D	30 Cap/3x10	Up to 2¾
#264564	Cabinet Flat	53½H x 54W x 15D	40 Cap/4x10	Up to 2¾
#264565	Cabinet Flat	72½H x 14½W x 15D	15 Cap/1x15	Up to 2¾
#264566	Cabinet Flat	72½H x 27W x 15D	30 Cap/2x15	Up to 2¾
#264567	Cabinet Flat	72½H x 41W x 15D	45 Cap/3x15	Up to 2¾
#264568	Cabinet Flat	72½H x 54W x 15D	60 Cap/4x15	Up to 2¾
#264590	Big Beam	53½H x 14½W x 15D	8 Cap/1x8	Up to 3½
#264591	Big Beam	53½H x 27W x 15D	16 Cap/2x8	Up to 3½
#264592	Big Beam	53½H x 41W x 15D	24 Cap/3x8	Up to 3½
#264593	Big Beam	53½H x 54W x 15D	32 Cap/4x8	Up to 3½
#264594	Big Beam	72½H x 14½W x 15D	12 Cap/1x12	Up to 3½
#264595	Big Beam	72½H x 27W x 15D	24 Cap/2x12	Up to 3½
#264596	Big Beam	72½H x 41W x 15D	36 Cap/3x12	Up to 3½
#264597	Big Beam	72½H x 54W x 15D	48 Cap/4x12	Up to 3½

Chart Racks

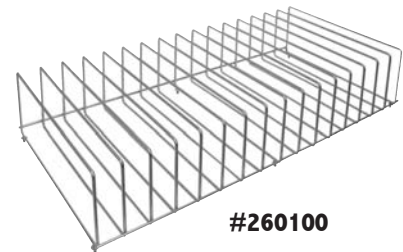


Omnicart[®] Chart Carousel

Designed to hold a maximum of 30 - 1½" or 2" top open and side open chart binders.

- Organizers can be easily repositioned to store larger binders
- Each tier independently rotates 360°
- Choose floor standing or counter top models

Product	Description	Capacity
#264605	.. Chart Carousel - Floor Single Tier	30 Cap/1x30 49½H x 36W x 36D
#264606	.. Chart Carousel - Floor Double Tier.....	60 Cap/2x30 49½H x 36W x 36D
#264607	.. Chart Carousel - Floor Triple Tier	90 Cap/3x30 65H x 36W x 36D
#264610	.. Chart Carousel - Counter Top/Single Tier	30 Cap/1x30 17½H x 36W x 36D
#264611	.. Chart Carousel - Counter Top/Double Tier	60 Cap/2x30 34H x 36W x 36D
#264615	.. Add-A-Tier	30 Cap/1x30 15H x 36W x 36D



Omni File Organizer

The Omni File Organizer offers 16 spaces measuring 1¼" to store 1" ring binders, clipboards and file folders. Fits on all 34½" width Omnicart[®] Vertical Chart Racks.

Product	Description	Dimensions
#260100	.. Omni File Organizer.....	31L x 16D x 7H

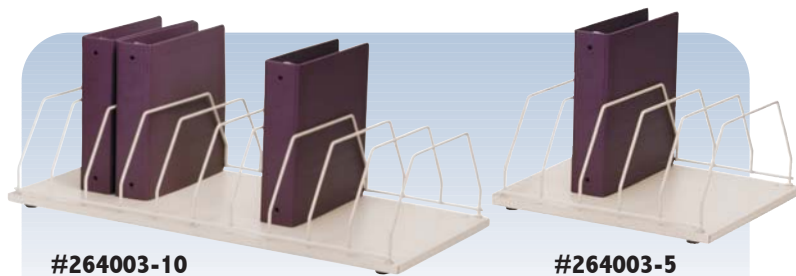


Table-Top Storage Racks

5, 10 or 15 capacity rack sits on counter, shelf or desk. Organizer holds top and side open ring binders, spring-loaded chartholders, clipboards, file folders or other records in an orderly fashion. Rubber feet prevent scratches. Color: Beige

Product	Description	Capacity	Dimensions
#264003-5	.. Table-Top Storage	5 Capacity.....	7½H x 16½W x 15D
#264003-10	.. Table-Top Storage	10 Capacity	7½H x 32½W x 15D
#264003-15	.. Table-Top Storage	15 Capacity	7½H x 47½W x 15D

Omni File Table-Top Storage Rack

Features 16 spaces measuring 1¼" wide specifically designed to hold lightweight chart binders, file folders and clipboards. Rubber feet protect table or counter top from scratches.

Product	Description	Capacity
#264003-16	.. Omni File Table-Top	16 Capacity 7H x 32½W x 15D

Transport Carts



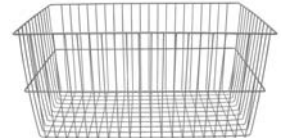
Utility Cart

Versatile Utility Cart for use in many locations throughout your facility. Features 1" metal tubing on 3" silent rubber casters. Easily folds flat for storage and shipping. Holds 6" or 12" grey powder coated baskets or 8 Capacity Storage Rack.

Product	Description	Dimensions
#264620	Utility Cart	38H x 19W x 30L
#264626	Utility Basket	6H x 14½W x 24L
#264627	Utility Basket	12H x 14½W x 24L
#264629	Storage Rack - 8 Capacity	14½H x 24L
#264630	Storage Rack - 6 Capacity	14½H x 24L



6" Basket
#264626



12" Basket
#264627



Wire Shelf Utility Cart

Features include three heavy duty wire shelves and 3" rubber casters for smooth, quiet transport over any surface.

- Maximum capacity 100 lbs/shelf

Product	Description	Dimensions
#264650	Wire Shelf Utility Cart	38H x 23W x 17L



Mobile Supply Cart

The Mobile Supply Cart is ideal for transporting a variety of items. Constructed of heavy duty 1" tubing with 3" silent rolling rubber casters.

- Features heavy-duty stainless steel shelves
- Maximum capacity 100 lbs/shelf

Product	Description	Dimensions
#264651	Mobile Supply Cart	38H x 26W x 16D

Chart Holders



Chartholders - HIPAA Compliant

- Thumb notched for easy entry
- Spring mechanism with 3 springs for easy open and close
- Stainless steel ID plate holds 1/2" labels
- Rubber covered rod ends for safety
- Available in anodized and vinyl clad aluminum

Product	Description	Capacity
#201101	Aluminum Chartholder	3/4"
#202102	Vinyl Clad Chartholder	3/4"

Wheeled Chart Carriers

- Mobile carriers hold up to ten 9" x 12" chartholders per tier
- 1" diameter anodized aluminum frame
- Rotating lever locks chartholders in place for noiseless movement

Product	Description	Dimensions	Capacity
#263810	Wheeled Chart Carrier	37H x 13W x 13D	1 Tier/10 Cap
#263820	Wheeled Chart Carrier	37H x 23W x 13D	2 Tier/20 Cap
#263830	Wheeled Chart Carrier	37H x 33W x 13D	3 Tier/30 Cap
#263840	Wheeled Chart Carrier	37H x 43W x 13D	4 Tier/40 Cap



Chart-Lok[®] Closure

Chartholder closure is easy to use, solves fallout problems, prevents record loss and will not damage records.

- Mounts easily on all chartholders or binders
- Beam[®] Chart-Lok[®] closures do not interfere with racks

Product	Description	Package
#251101	Chart-Lok [®] Closure	10/Pak

Medical Drop Box - HIPAA Compliant

Reduce costs by controlling lost or misdirected patient records with the Beam[®] Medical Drop Box. This box temporarily holds discharged patient charts within the care unit until scheduled pickup or delivery by the Medical Records Department.

- Units may be keyed alike for convenience
- Welded Steel Construction
- Can be wall mounted or used as a floor unit
- Accepts charts up to 3" thick

Product	Description	Dimensions
#209100	Medical Drop Box - Beige/Lt. Grey	26 1/2" H x 16" W x 12" D

Specify Color: Beige Light Grey

Molded Ring Binders



1" Molded Ring Binders

5 Colors to Choose From:



Twin-Hinge System

Designed to prevent hinge tearing due to excessive open and close for lasting durability and long life.



1 1/2" Molded Ring Binders



1" Molded Binders

5-year guarantee • Holds 250 + sheets • Patented twin hinge design
Top & Side Open models - 3 rings

Product Description	1-99	100-299	300-499	500+
#205002 .. 1" Ring/Side Open				
11 1/8"H x 11 1/8"W x 1 1/8"D				
#205003 .. 1" Ring/Top Open				
13 3/8"H x 9 1/8"W x 1 1/8"D				

1 1/2" Molded Binders

5-year guarantee • Holds 300 + sheets • Patented twin hinge design
Top Open-specify 2, 3, 5 ring • Side open-specify 3, 5 ring

Product Description	1-99	100-299	300-499	500+
#205009 .. 1 1/2" Ring/Side Open				
11 1/8"H x 11 1/8"W x 2 1/8"D				
#205010 .. 1 1/2" Ring/Top Open				
13 3/8"H x 9 1/8"W x 2 1/8"D				



2" Molded Ring Binders



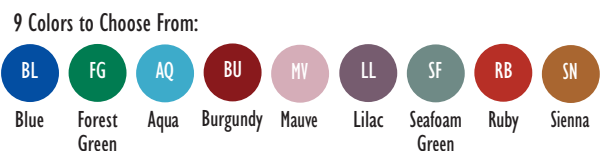
2" Molded Binders

5-year guarantee • Holds 375 + sheets • Patented twin hinge design
Top Open - specify 2, 3, 5 rings • Side Open - specify 3, 5 ring

Product Description	1-99	100-299	300-499	500+
#205007 .. 2" Ring - Side Open				
11 1/8"H x 11 1/8"W x 2 1/8"D				
#205008 .. 2" Ring - Top Open				
13 3/8"H x 9 1/8"W x 2 1/8"D				



Big Beam 2 1/2" Molded Ring Binders



2 1/2" Molded Binders

5-year guarantee • Holds 450 + sheets • Patented twin hinge design
Top & Side Open models - 3 Rings

Product Description	1-99	100-299	300-499	500+
#205020 .. 2 1/2" Ring - Side Open				
11 1/8"H x 12 1/8"W x 3 1/8"D				
#205021 .. 2 1/2" Ring - Top Open				
14 3/8"H x 9 1/8"W x 3 1/8"D				

Clipboards



Covered Clipboard #205103



Overbed
Covered Clipboard
#205603

Covered Clipboards are HIPAA Compliant! - Keep confidential information private and secure.



Poly Covered Clipboard

Overbed and Standard

- Cover is secured with our unique CHART-LOK™
- Holds 50+ papers or forms
- 10" x 13" size accommodates most forms and reports
- Constructed of 1/8" thick tripolymer material
- Keep patient records convenient with our overbed 1 3/4" handle

Product Description

#205103 Poly Covered Clipboard	10W x 13H
#205603 . . . Poly Covered Overbed Clipboard	10W x 13H

Dimensions

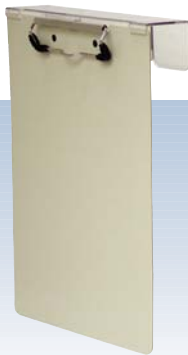


Low Profile
(Standard)



Thumb Clip
(Custom - Call to order)

Note: Omnimed® Clipboards are supplied from stock with the low profile clip. Standard poly aluminum and vinyl clad clipboards can be special ordered with optional thumb clip. Both have strong spring action clips with great holding power and capacity.



#203913



#203914



Poly Clipboards

Overbed and Standard

- Plated clip opens to full 1 1/2" to hold multiple records
- Cover is secured with our unique CHART-LOK™
- 9" x 13" size accommodates most forms and reports
- Constructed of thick tripolymer material
- Keep patient records convenient with our overbed 1 3/4" handle

Product Description

#203913 . . Poly Overbed Clipboard	9W x 12 1/4H
#203914 . . Poly Clipboard	9W x 12 1/4H

Dimensions



#204602

#203101

Clipboards

Overbed and Standard

- Indestructible - ideal for constant use
- Lightweight and easy to clean
- Equipped with low profile clip to hold up to 50+ papers or forms
- Keep patient records convenient with our overbed 1 3/4" handle

Product Description

#203101 . . Aluminum Clipboard	9W x 13 1/4H
#203601 . . Aluminum Overboard Clipboard	9W x 13 1/4H
#204602 . . Vinyl Clad Overboard Clipboard	9W x 13 1/4H

Dimensions

Chart Accessories



#224104

Flag-It™ Chart Signal

Keep patient records and charts organized and compliant by using Flag-It Chart Signals. Manually raise or lower flag to address each patient's unique needs. Choose from over 25 stock titles or customize flags to meet your exact specifications. Designed to incorporate in your charting divider sets. Each Flag-It sheet holds up to 5 flags. Made of heavy gauge polyethylene. Available for top and side open chart styles.

Product	Description	1-99	100+
#224102	Flag-It Chart Signal - Top Open		
#224104	Flag-It Chart Signal - Side Open		

Visit our Website at: www.omnimedbeam.com
for our Complete Selection of Flag-it™ Chart Signals



#205030

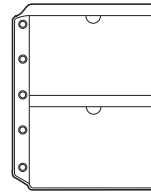
#205025

2½" Med/Treatment Book

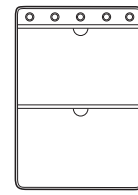
Increase documentation efficiency. The Med and Treatment Books help organize and record dispensed medications and patient treatments.

- 2½" ring holds 450+ sheets
- Cover and spine imprinted for identification
- Med Book - Side Open - burgundy
- Treatment Book - Side Open - mauve

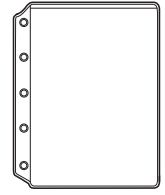
Product	Description	Dimensions	Ring Size
#205025	Med Book - Burgundy	11½"H x 12½"W x 3½"D	2½"
#205030	Treatment Book - Mauve	14¾"H x 9¾"W x 3½"D	2½"



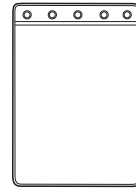
#251141



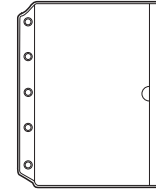
#251143



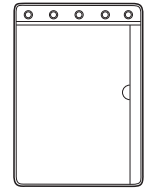
#251146



#251147



#251161



#251162

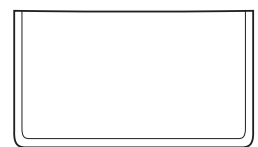
Plastic Sheet Protectors

Designed to protect important patient records and information such as Face Sheets, Lab Reports and Advance Directives. Heavy gauge clear plastic construction with heat sealed seams ensure durability.

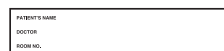
Product	Description	Dimensions	Pockets	1-99	100+
#251141	Plastic Sheet Protector - Side Open	8¾" x 5"	2		
#251143	Plastic Sheet Protector - Top Open	8¾" x 5"	2		
#251146	Plastic Sheet Protector - Side Open	8¾" x 11"	1		
#251147	Plastic Sheet Protector - Top Open	8¾" x 11"	1		
#251161	Plastic Sheet Protector - Side Open	8½" x 11"	1		
#251162	Plastic Sheet Protector - Top Open	8½" x 11"	1		



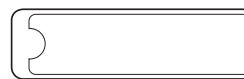
#251157



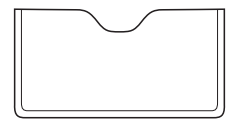
#251153



#253413



#251150



#251151

Plastic Pressure Sensitive Pockets

Clear heavy gauge plastic pockets have durable heat sealed seams and come in many sizes for your convenience.

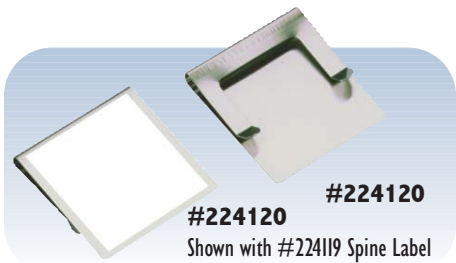
Product	Description	Dimensions	1-99	100+
#251150	ID Pocket for Spine	1¼" x 5"		
#251151	Charge Plate Holder	4¼" x 2¼"		
#251153	Pressure Sensitive Pocket	4" x 6¾"		
#251157	Picture Pocket - Side Open	4¼" x 5"		
#253413	ID Card - 1000 / Box	1" x 5"		



Sheet Lifters

Protect and reduce stress on contents. Prevents jamming of pages when binder is closed. Natural color. 5-hole punched for Top and Side Open Binders.

Product Description	Dimensions
#251170 . . Sheet Lifters	11" x 5"
Side Open - 12 Pair/Pack	
#251171 . . Sheet Lifters	8 1/2" x 5"
Top Open - 12 Pair/Pack	



#224120
Shown with #224119 Spine Label

Room Number Spine Clip

Easily clips on the spine of any binder measuring 1 1/2" or more. Accepts pressure sensitive write-on labels.

Product Description	Package
#224120 . . Room Number Spine Clip	
#224119 . . Label for Spine Clip	500/Roll



#251190

Reinforcer[™]

Available for side and top open styles in precut sheets or boxed rolls for fast and easy application. Simply remove paper and press into position. Package contains 100 strips.

Product Description	Size
#251190 . . Reinforcer [™] - Side Punched	11"
Box/Roll Format	
#251191 . . Reinforcer [™] - Top Punched	8 1/2"
Box/Roll Format	
#251192 . . Reinforcer [™] - Side Punched	11"
Box/Roll Format	
#251193 . . Reinforcer [™] - Top Punched	8 1/2"
Box/Roll Format	



#224121

Stat-Chek[®] Spine Signal

Stat-Chek[®] provides communication between medical staff. Individual slide moves to reveal color and status. Available in Red. Size: 1 1/8" x 1/2"

Product Description	Package
#224121 . . Stat-Chek [®] Spine Signal	12/Pack



#251185

Metal Charge Plate Holder

Our durable Metal Charge Plate Holder conveniently secures the patient/resident charge card where it's needed most...on the chart. Metal Charge Plate Holder is factory attached. Specify position.

Product Description	Package
#251185 . . Metal Charge Plate Holder	
Factory Attached	



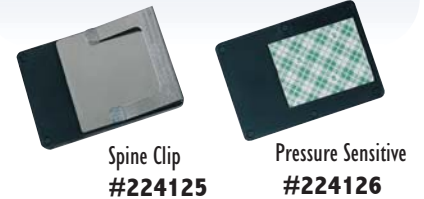
#253501

#253502

Pressure Sensitive Spine ID Labels

Peel and stick ID labels fit in recessed areas of chartbinders to indicate contents. Choose printed or blank labels. 200 per roll.

Product Description	Package
#253500 . . Spine ID Labels - Side Open - Blank	
#253501 . . Spine ID Labels - Side Open - Patient	
#253502 . . Spine ID Labels - Side Open - Resident	



Spine Clip
#224125

Pressure Sensitive
#224126

Flag-It[™] Spine Signals

Flag-It[™] Spine Signals immediately alert nursing and physician personnel of patient charting needs. Tabs easily slide from blank to reveal one or all five highly visible color coded windows (Red, Yellow, Blue, Orange and Green).

- Made of high-impact plastic
- Satisfy HIPAA confidentiality requirements
- Available with spring clip for binder use or with pressure sensitive tape for other applications

Product Description	1-99	100+
#224125 . . 5 Color Alert - Spine Clip		
#224126 . . 5 Color Alert - Pressure Sensitive		



#255714

Wall Pockets

Mount on a wall, door, bed or file cabinet. Easily attach with pressure sensitive tape (included) or screws (not included). Tapered to 1" at bottom. Standard color is Beige.

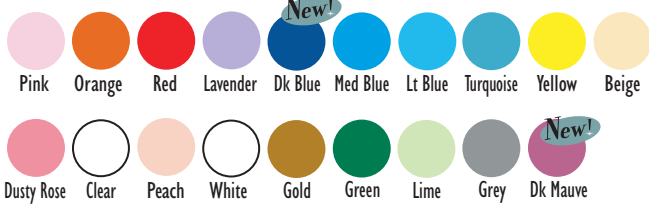
Product Description	Size
#255713 . . Wall Pocket	14W x 7H
Aluminum	
#255714 . . Wall Pocket	14W x 7H
Vinyl Clad - Beige	
#255715 . . Wall Pocket	17W x 9 3/4H
Aluminum	
#255716 . . Wall Pocket	17W x 9 3/4H
Vinyl Clad - Beige	

Chart Dividers



Custom Poly Dividers

19 Colors to Choose From:



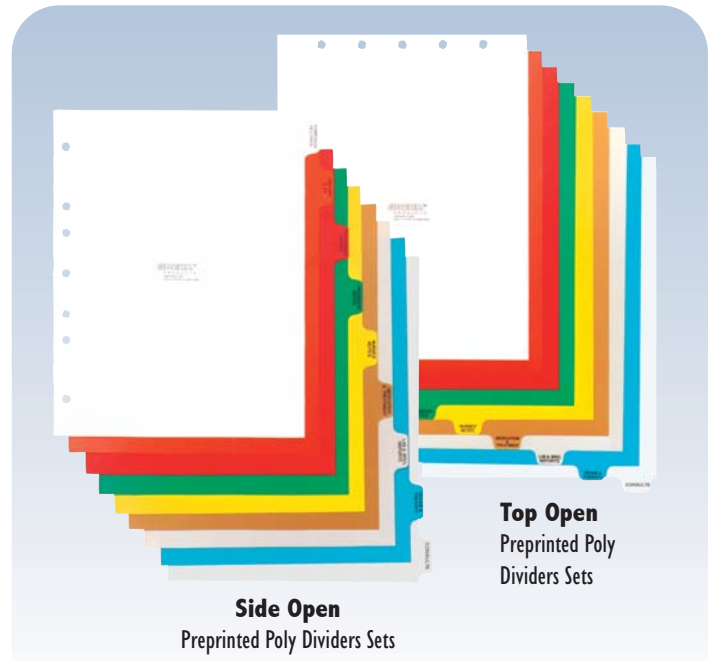
Custom Poly Dividers

Beam Custom Poly Chart Dividers offer optimal organization and management of patient care information. Heavy-gauge polyethylene plastic. Can be factory die cut to hold four individual flags. Body copy and tab tumble printing available. Shipped collated and bulk packaged. Eight point foil stamping.

Product Description 50-99 100-199 200-299 300-399 400-499 500+

#220001	.. 1 Tab/Set
#220002	.. 2 Tab/Set
#220003	.. 3 Tab/Set
#220004	.. 4 Tab/Set
#220005	.. 5 Tab/Set
#220006	.. 6 Tab/Set
#220007	.. 7 Tab/Set
#220008	.. 8 Tab/Set
#220009	.. 9 Tab/Set
#220010	.. 10 Tab/Set
#220011	.. 11 Tab/Set
#220012	.. 12 Tab/Set
#220013	.. 13 Tab/Set
#220014	.. 14 Tab/Set
#220015	.. 15 Tab/Set
#220016	.. 16 Tab/Set

Blank divider sets are 15% less than printed set prices
Call for pricing on die-cut sheets



Side Open
Preprinted Poly Dividers Sets

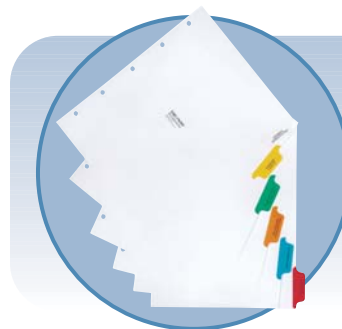
Top Open
Preprinted Poly
Dividers Sets

Preprinted Poly Divider Sets

Complete choice of side opening and top opening preprinted styles. All dividers are foil hot-stamped. Side Open sets are 7-hole punched, Top Open sets are 5-hole punched, collated and wrapped. Compatible with other charting systems. Made of heavy gauge polyethylene plastic. Virtually indestructible and easily wiped clean.

Product Description 1-99 100-199 200-299 300-399 400-499 500+

#220900	.. Side Open - 9 Tab/Set
#220901	.. Top Open - 9 Tab/Set
#220912	.. Side Open - 9 Tab/Set
#220913	.. Top Open - 9 Tab/Set
#220902	.. Side Open - 11 Tab/Set
#220903	.. Top Open - 11 Tab/Set
#220907	.. Side Open - 14 Tab/Set
#220906	.. Top Open - 14 Tab/Set
#220917	.. Top Open - 14 Tab/Set
#220916	.. Side Open - 14 Tab/Set
#220915	.. Top Open - 14 Tab/Set
#220914	.. Side Open - 14 Tab/Set
#220910	.. Top Open - 16 Tab/Set
#220911	.. Side Open - 16 Tab/Set

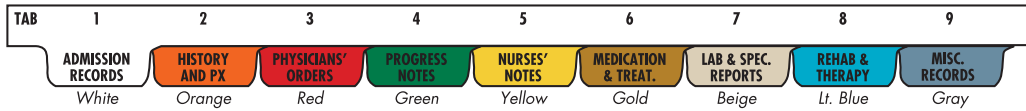


Visit our Website at:
www.omnimedbeam.com
to Order High Quality
Paper, Tyvek[®] & Custom
Dividers Sets

Chart Dividers

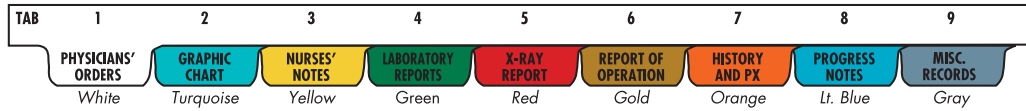
9 Tab Preprinted (Top or Side Open)

220900 - 220901



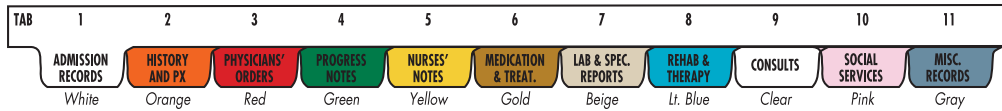
9 Tab Preprinted (Top or Side Open)

220912 - 220913



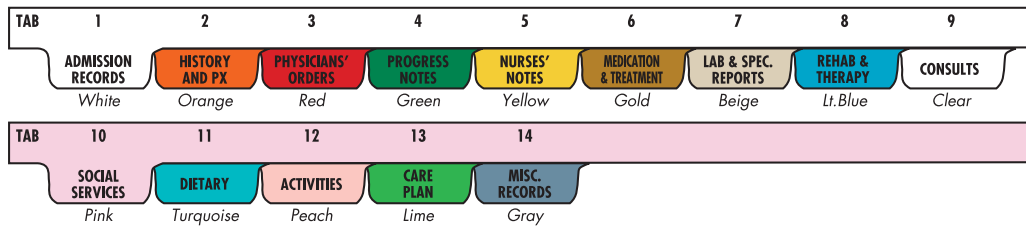
11 Tab Preprinted (Top or Side Open)

220902 - 220903



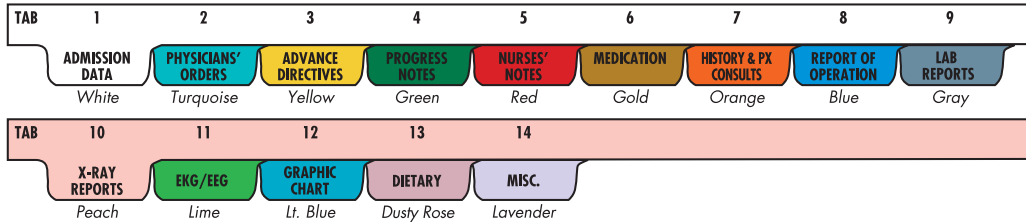
14 Tab Preprinted (Top or Side Open)

220906 - 220907



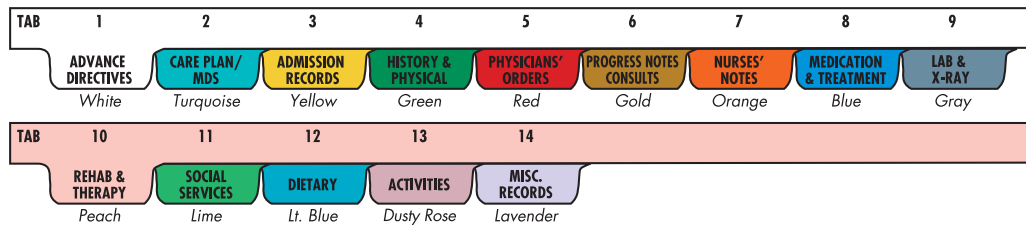
14 Tab Preprinted (Top or Side Open)

220916 - 220917



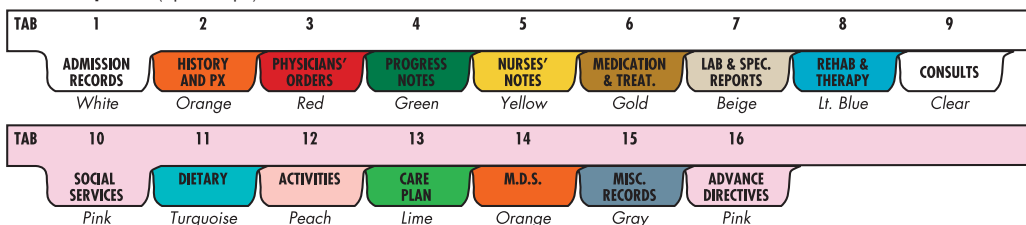
14 Tab Preprinted (Top or Side Open)

220914 - 220915



16 Tab Preprinted (Top or Side Open)

220910 - 220911



How to order Custom Chart Dividers:

Download a Custom Divider Order Form from our website at: www.omnimedbeam.com

Then:

- Choose Top or Side Open Style
- Choose the Number of Sets
- Choose the Tabs per Set
- Provide Titles for each Tab
- Choose Tab Position
- Choose Divider Color
- Provide Tab Cut Size

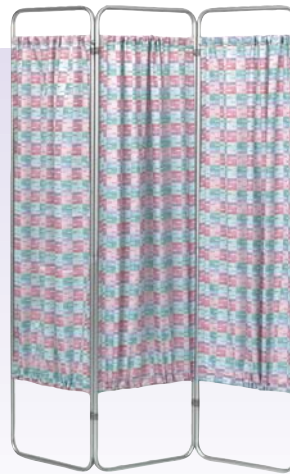
Custom Divider Order Form

Privacy Screens



#153054 w/Sage #153048

#153053 w/Apricot #153020



#153093 w/Parade #153025



#153092 w/Paisley #153047

Beamatic™ Screen Frame

Stable “S” shape base allows screen frames to fully expand providing total usage of the entire width and height of the frame. Base folds when not in use for compact vertical storage. Available in 2, 3, 4, or 5 section models. Each section measures 68”H x 19”W. Each section requires one vinyl or fabric panel.

Product Description	Panels Needed
#153052... Beamatic Screen.....	2 Panels
#153053... Beamatic Screen.....	3 Panels
#153054... Beamatic Screen.....	4 Panels
#153055... Beamatic Screen.....	5 Panels

Economy Folding Screen Frame

Provide instant isolation for routine, temporary and special circumstances. Anodized aluminum frame and “accordion” hinge allows frame to fold for convenient storage. Available in 2, 3, or 4 section models. Each section measures 68”H x 19”W. Each section requires one vinyl or fabric panel.

Product Description	Panels Needed
#153092... Economy Folding Screen.....	2 Panels
#153093... Economy Folding Screen.....	3 Panels
#153094... Economy Folding Screen.....	4 Panels



#153153
w/Norway #153035

**Mix & Match Privacy
Screen Panels and
Frames for
Flexibility and
Design Options!**



#153961
w/Rouge #153040

3-Section Mobile Screen Frame On Casters

Our Mobile Screen on Casters offers all the features of our Economy Folding Screen, plus smooth rolling 2” diameter casters for stability and transportation. Each section measures 68”H x 19”W.

Product Description	Panels Needed
#153153... 3-Section Mobile Screen on Casters.....	3 Panels

3-Section King Size Screen Frame

The King-Size Screen features large oversized sections that provide maximum privacy. Strong, lightweight, anodized aluminum frame. Each section measures 73¼”H x 32”W.

Product Description	Panels Needed
#153950... King Size Screen.....	6 Panels
#153961... King Size Screen on Casters.....	6 Panels

Privacy Screens Panels

All Privacy Screen Panels are Anti-Bacterial and Meet California Flame Resistant Requirements.

Economy Vinyl Panels

Our economy panels provide the isolation you need.

Product Description	Dimensions
#153010 . . White - Vinyl	27W x 52H
#153015 . . Green - Vinyl	27W x 52H

Screen Frames and Panels are Sold Separately

Economy Vinyl Panels



Designer Cloth Panels

Omnimed, Inc. features the widest and most fashionable selection of privacy screen panels in the industry. Our standard line is chic and contemporary to coordinate with all décor. The Elite panels are stylish and add warmth to any private situation.

Product Description	Dimensions
#153020 . . . Apricot - Standard	27W x 52H
#153035 . . . Norway - Standard	27W x 52H
#153040 . . . Rouge - Standard	27W x 52H
#153045 . . . Frost - Standard	27W x 52H
#153046 . . . Lavender - Standard	27W x 52H
#153025 . . . Parade - Elite	27W x 52H
#153026 . . . Salsa - Elite	27W x 52H
#153027 . . . Palmetto - Elite	27W x 52H
#153030 . . . Freeway - Elite	27W x 52H
#153042 . . . Autumn - Elite	27W x 52H
#153047 . . . Paisley - Elite	27W x 52H
#153048 . . . Sage - Elite	27W x 52H

Standard Cloth Panels



How to Order Privacy Screens

Order panels and screen frames together for a complete screen.

Step one - Choose Screen Frame: Beamatic, Economy, King-Size or Mobile

Step Two - Choose fabric or vinyl panels: Premier, Elite, Standard or Economy

- One panel per section for the Beamatic and Economy screen frames
- Two panels per section for the King-Size screen frame

Screen frames and panels are sold separately

Elite Cloth Panels



Track Cubicle Curtains

Why Omnimed Curtains?

- Custom designed curtains to meet your specific needs
- Choose from a large assortment of designer fabrics that add style to any setting
- All curtains are flame retardant and meet stringent F.R. codes, including NFPA Bulletin 701
- Safe-T-Top Stitch construction makes curtains durable and tear proof
- Cubicle Curtain Tracks come in a variety of styles made to order for any situation
- Easy to install
- Meet national compliance standards
- Fabrics are durable, resistant to abrasion and machine washable
- Most orders ship within two weeks

Continuing our tradition of supplying products that provide privacy in hospitals and healthcare facilities, Omnimed, Inc. now offers a complete line of stylish Track Privacy Curtains. These curtains are high quality and offer the perfect solution for providing your patients the privacy they deserve.



Mesh Cubicle Curtain



All Fabric Cubicle Curtain

Track



Our Cubicle Curtain Track is made of high-grade aluminum and available in custom styles and sizes. All tracks are shipped in pieces with standard 18" x 18" bends, splices, carriers and end stops.

How to Order Cubicle Curtains

Visit our website at www.omnimedbeam.com for complete instructions on how to measure curtains, determine track style, size and select fabric.

Call 1.800.257.2326 to order curtains

All Cubicle Curtains are CUSTOM MADE and are NOT RETURNABLE. It is extremely important that measuring is done precisely and correctly and the information is accurately conveyed to us to ensure that your order is correct.

Fabrics

Choose from our selection of high-quality fabrics in solid, stripe and designer patterns. Visit our website at www.omnimedbeam.com for our complete line of fabric selections.

Standard



Windsor / Powder



Windsor / Dune



Windsor / Surf



Windsor / Lilac

Panorama



Square Dot / Limestone



Geo leaf



New Leaf



Yo Yo / Seamist

InterSpec



Grove



Puzzle



Cosmos



Deco

Mesh

Curtains with mesh allow for the functioning of sprinkler systems and the circulation of air, as well as, giving the patient a more open feeling. Use of mesh is dependent on aesthetic preference and/or fire codes that restrict the type or use of mesh. Standard width of mesh is 20".

Colors include:

Beige

Ivory

Pacific Blue

Teal

Cameo

White

Mauve

Mist Green

Whispering Blue

Lavender Mauve

Twilight Blue

Manufacturing Capabilities



In June 2007, Omnimed, Inc. welcomed a “new addition” to our precision sheet metal fabricating, machining and welding facility - The AMADA EM2510NT Drive Turret Punch Press. This is the world’s fastest sheet metal punch press capable of 1800 strokes per minute! In March 2008, we added the Amada HDS 8025 Brake Press. The new Brake reduces setup times, improves accuracy and increases output. The addition of these new “family members” enables Omnimed, Inc. to continue to develop innovative, high quality products that meet our customer’s needs using the most efficient production methods.

Terms: Net 30 days

No Minimum Orders: Add \$10.00 processing fee in addition to freight and handling for orders under \$50.00.

Freight & Handling: Prepaid and added to invoice. International, freight collect, third party bill and parcel post shipments are subject to additional handling charges. General catalog orders over \$4,000 receive 50% freight credit.

Prices: Subject to change without notice. Not responsible for typographical errors.

Account Establishment: To establish an open account please send a credit reference including bank and trade information with your initial order. You can avoid delays by including payment or by using Visa, MasterCard or American Express for your orders. Inactive accounts over one year can re-establish open account status by supplying updated credit information. First time customers must use credit card for first order.

Repairs: On goods returned for repair, refinishing or adjustment, transportation charges both ways are to be paid by the purchaser. Customers will be contacted on the appropriate repair charges upon receipt of product.

Special Orders: Any products custom fabricated to your specifications which are not shown as standard catalog items may require a deposit. Custom orders must be confirmed in writing and are not returnable.

Redesign: We reserve the right to redesign or modify any product.

Damaged Goods: Our merchandise is carefully packed and thoroughly inspected before leaving our plant. Responsibility for its safe delivery is assumed by the carrier upon acceptance of the shipment. Claims for loss or damage sustained in transit must, therefore, be made upon the carrier, as follows: Concealed Loss or Damage: Concealed loss or damage means loss or damage which does not become apparent until the product has been unpacked. The contents may be damaged in transit due to rough handling even though the carton may not show external damage. When the damage is discovered upon unpacking, SAVE ALL PACKING MATERIAL. Make a written request for inspection by the carrier’s agent within fifteen days of the delivery date and file a claim with the carrier. By following these instructions carefully, we guarantee our full support of your claims to protect you against loss from concealed damage. However, if the claim is denied due to the consignee’s failure to comply with the claim procedure herein outlined, the consignee will be held liable for the damaged or lost merchandise. No credit will be issued. If necessary, contact Omnimed, Inc. at 800.257.2326 for detailed instructions regarding filing claims for damaged goods.

Visible Loss or Damage: Any external evidence of loss or damage must be noted on the freight bill of express receipt, and signed by the carriers agent. Failure to adequately describe such external evidence of loss or damage may result in the carrier refusing to honor a damage claim. The form required to file such a claim will be supplied by the carrier. Please do not return damaged products to us. We will not accept return shipments without written or verbal authorization. File claims as above.

Product Return: Obtain authorization before returning any product. Product must be returned as received. Save the carton and packing material for safe return shipping. Failure to comply with this may cause us to return the goods shipped to us and no credit will be issued. All returns must be authorized verbally or in writing and are subject to a minimum 15% restocking charge. No returns after 60 days from date of shipping. All parts and custom made merchandise are not returnable. Freight collect returns will not be accepted.

Credits: Must be used within a 12-month period otherwise credits will be forfeited.

The Omnimed Guarantee... You Must be Satisfied. Products manufactured by OMNIMED®, Inc. are guaranteed against defects in materials and workmanship, provided the specific equipment is used as recommended. This guarantee shall not apply to any equipment which has been damaged, misused, repaired or altered outside our factory without our authorization. Dents, scratches and bent parts are considered normal wear and tear and do not apply.

10 Years: Stainless Steel Narcotic Cabinets excluding keys and locks (keys and locks - 1 year).

7 Years: Vertical and Flat Storage Chart Racks.

5 Years: Bedpan Racks, Spring Loaded Chartholders, Utility Carts, Privacy Screen Frames, Diagnostic Instrument Stands, Chart Carousels, Chart Carousel, Glove Box Holders, Wall Storage Cabinets (excluding keys and locks), Medical Drop Box, Room I.D. Flag Systems and Wall Desks (excluding gas springs, keys and locks - 1 year), Computer Work Stations.

3 Years: Economy Narcotic Cabinets, Ring Binders (excluding rings - 1 year), Wall Pockets and Poly Chart Dividers.

1 Year: Clipboards, FLAG-IT® Signal System, Sheet Lifters, Power Lifter®, Power Lifter®II Heavyweight® Infusion Stand, Omni Clamping System, Chart Rack Locking Panels and Articulating Arm.

90 Days: Disposable chart accessories and other products not listed above except paper products which are not guaranteed.

Repaired or replaced merchandise is covered under the balance of the original guarantee. Example: If a stainless steel narcotic cabinet is repaired in its seventh year, it will have the balance of the ten year warranty which would be three years. Omnimed®, Inc. reserves the option at its sole discretion to repair, replace or issue a refund to the purchaser in the amount of the original purchase price. Only factory authorized returned goods will be accepted. This guarantee is in lieu of all other obligations or liabilities and it neither assumes nor authorizes any person to assume any other obligation in connection with the sale of its products. Our guarantee gives you specific legal rights, however, you may have other rights which will vary from state to state. Product replacement reverts to original invoice date. Invoice receipts or copies must accompany returned products.

New!

Website:
www.itwalldesks.com

Your one-stop shop for
Computer Wall Work
Stations, Transport
Carts and Wall Mount
Articulating Arms.



All Products Made in the U.S.A.

Visit our Existing Website: www.omnimedbeam.com

For ordering information contact your local Distributor Representative.

MANUFACTURERS OF **BEAM** PRODUCTS
OMNIMED INC.

800 Glen Avenue • Moorestown, N.J. 08057

800.257.2326 • FAX: 856.359.2249

www.omnimedbeam.com

Visa • Mastercard and American Express Accepted

