



ANATOMICAL CHART COMPANY

Best-Selling Products Catalog

*Our best-selling
anatomical products
are within your grasp*

Top-selling anatomical charts, models, and
teaching aids from Anatomical Chart Company...

Informative | Memorable | Incomparable



ANATOMICAL CHART COMPANY

Table of Contents

- 3** Anatomical Charts
- 8** Anatomical Chart Collections & Books
- 10** Health Education Resources & Training Aids
- 11** Anatomical Models
- 14** Skeletal Models

Look for these icons for special values and features ...

SAVE Save! Special sets and collections at reduced prices

Spanish Available in Spanish

3-D Available in 3-D

GIANT SIZE Available in Giant Size

Receive timely announcements right in your in-box.

Simply go to

LWW.com/Anatomical

and register to receive E-mail notices of Web-only price reductions, new resources, and other exclusive opportunities.



Best-selling anatomical products from Anatomical Chart Company

Whether you're in the classroom or the exam room, these top-selling products from Anatomical Chart Company deliver a clear, accurate view of the human body and all its systems. Dynamic full-color artwork illuminates every aspect of the human anatomy, and concise text explains exactly how the human body is structured and how it works.

From bold full-color charts to stunning 3-D models to patient education collections, these best sellers make it easy to educate your staff, teach your students, engage your patients, and refresh your knowledge.

- **High-quality, optimally sized artwork** captures anatomical details with unsurpassed clarity.
- **Succinct yet thorough explanations** make concepts easy to grasp.
- **At-a-glance format** speeds learning.
- **Clearly labeled anatomical features** eliminate confusion.

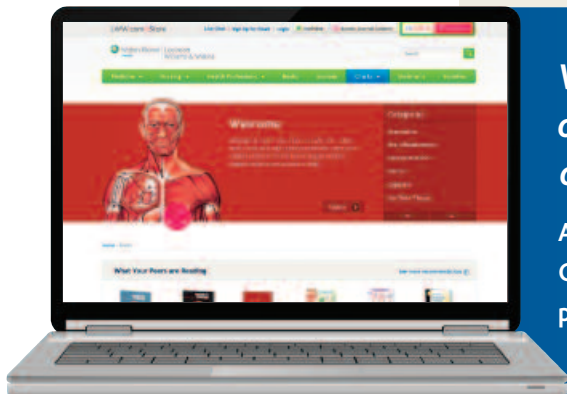
Four EASY ways to order ...

- **Go to LWW.com/Anatomical** 24 hours a day, 7 days a week.
- **Call Toll Free 1-800-621-7500**
Monday through Friday, 8:30 a.m. to 5 p.m. Eastern Standard Time. Please have your credit card (or purchase order number) ready, along with the reference number printed in the yellow box on the back of your catalog.
- **Mail your order form to**
Wolters Kluwer Health, P.O. Box 1600, Hagerstown, MD 21741-1600.
- **Fax to 1-301-223-2400**
Be sure to include all information requested on your order form.

Please see your order form for additional details. Prices and availability are subject to change.

Use Anatomical Chart images in your materials

Learn about licensing opportunities at our Website <http://images.wkhealth.com>.



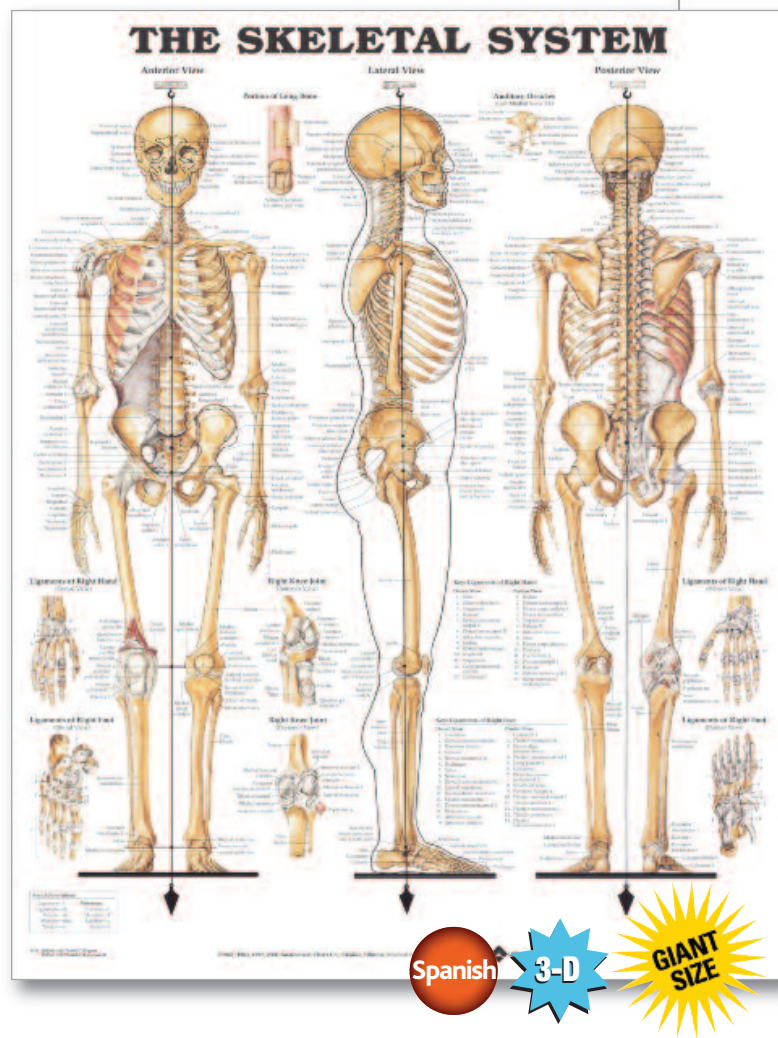
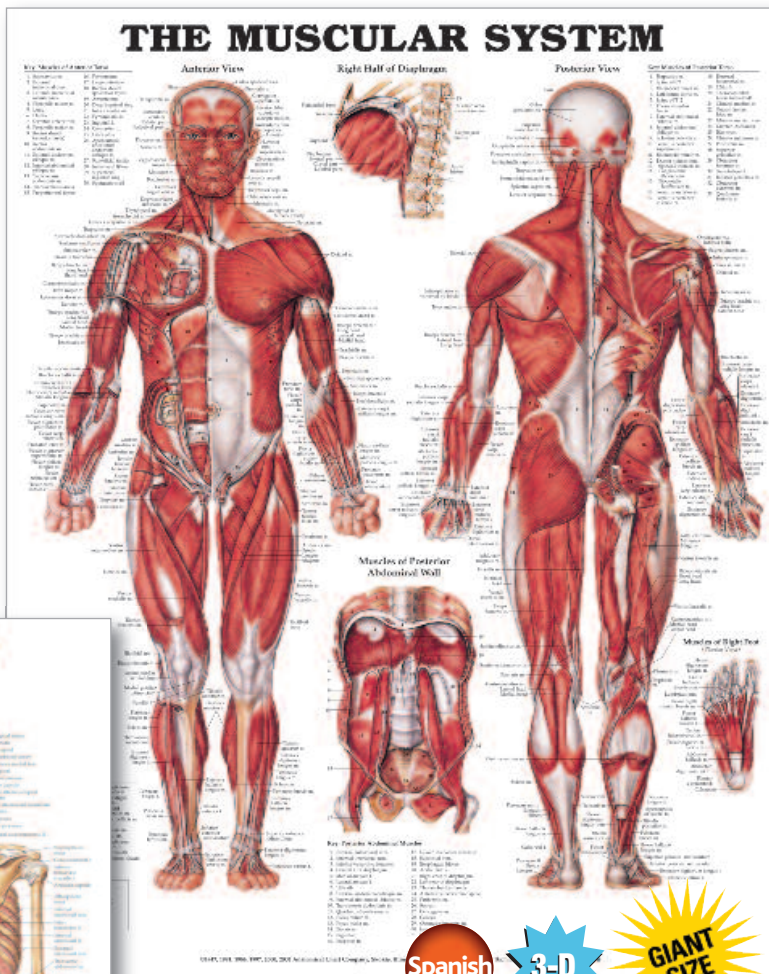
Visit **LWW.com/Anatomical** for our full offering of charts, models, reference books, and novelties— or shop our complete catalog at **Lippincottcatalog.com**.

Anatomical.com is now part of the LWW.com eStore!

Go to **LWW.com/Anatomical** to view trusted Anatomical Chart Company products, plus new educational resources from Lippincott Williams & Wilkins.

Chart sizes and materials

- **Heavy paper**, 20" x 26", is ideal for framing or tacking on a wall.
- **Plastic laminate**, 20" x 26", offers flexibility, durability, and metal eyelets at top corners for hanging or portable-stand display. Write-on/wipe-off surface is perfect for classrooms and offices.
- **Latex-free styrene plastic**, 19-3/4" x 26", has UV-resistant coating for color protection on durable, non-flexible, heavy-weight plastic. With write-on/wipe-off surface and convenient eyelets for hanging.
- **Giant**, 42" x 62", printed on sturdy tear-resistant light-weight plastic that's ideal for demonstrations and lecture halls. With three eyelets for easy hanging.
- **3-Dimensional**, 18" x 25" made of durable, lightweight, non-toxic, recyclable plastic.



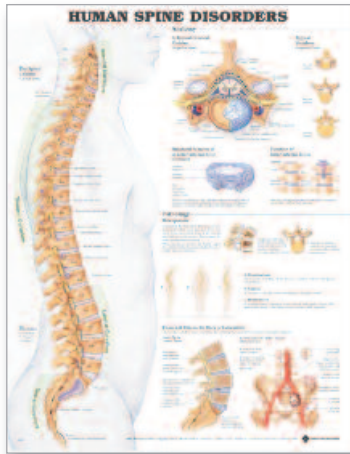
A. 8946 The Muscular System

978-1-58779-035-5	Laminated	\$19.95
978-1-58779-683-8	Styrene Plastic	\$29.95
978-1-58779-036-2	Paper	\$10.95
978-1-58779-981-5	Giant	\$59.95
978-1-58779-996-9	Laminated (Spanish)	\$19.95
978-1-58779-995-2	Paper (Spanish)	\$10.95
978-1-58779-038-6	3-Dimensional	\$12.95

B. 8943 The Skeletal System

978-1-58779-062-1	Laminated	\$19.95
978-1-58779-682-1	Styrene Plastic	\$29.95
978-1-58779-063-8	Paper	\$10.95
978-1-58779-982-2	Giant	\$59.95
978-1-58779-998-3	Laminated (Spanish)	\$19.95
978-1-58779-997-6	Paper (Spanish)	\$10.95
978-1-58779-065-2	3-Dimensional	\$12.95

Best-Selling Anatomical Charts



A.



B.



C.



D.



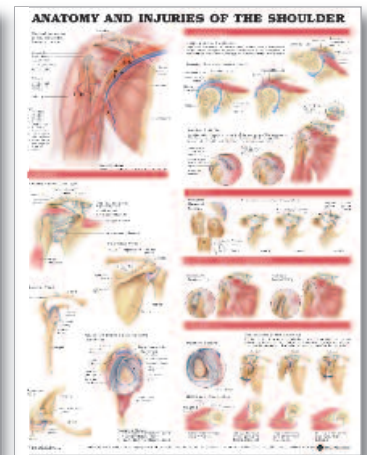
E.



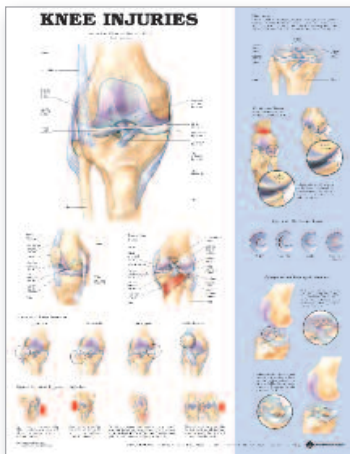
F.



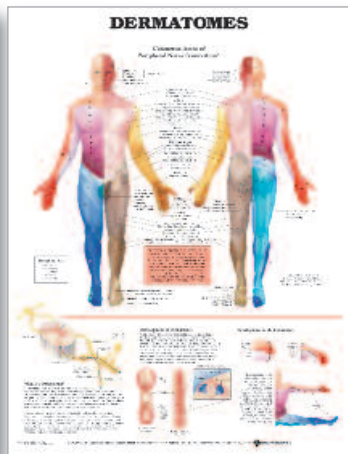
G.



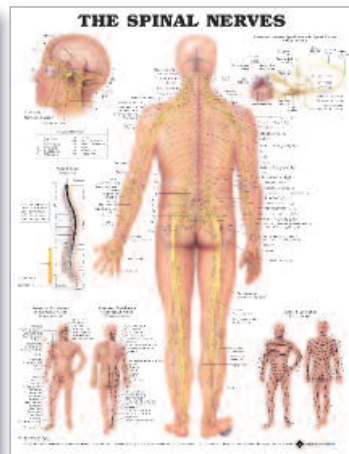
H.



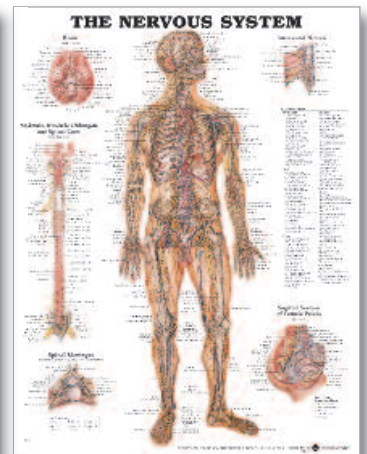
I.



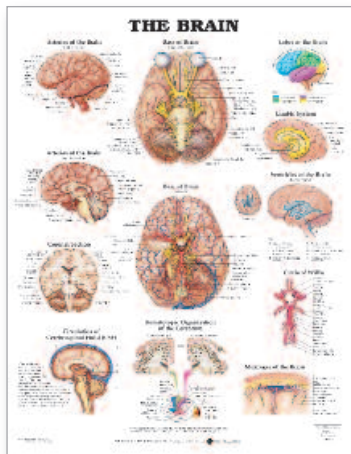
J.



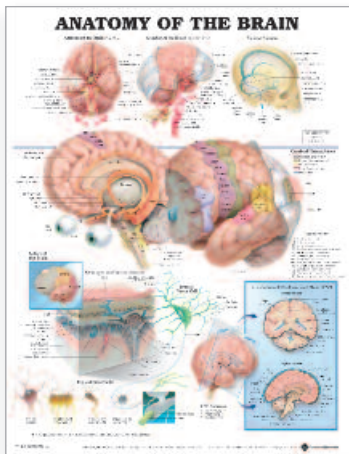
K.



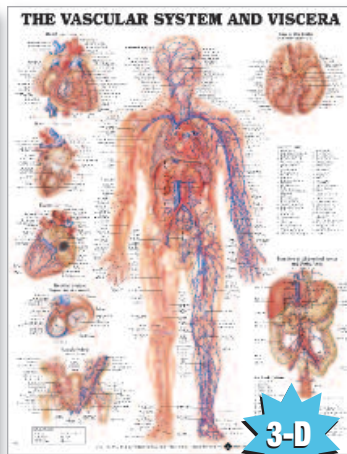
L.



M.



N.



O.



P.

A. 9970 Human Spine Disorders, 2nd Edition

978-1-58779-443-8	Laminated	\$19.95
978-1-58779-465-0	Styrene Plastic	\$29.95
978-1-58779-399-8	Paper	\$10.95

B. 9850 The Vertebral Column

978-1-58779-210-6	Laminated	\$19.95
978-1-58779-689-0	Styrene Plastic	\$29.95
978-1-58779-211-3	Paper	\$10.95

C. 9793 Ligaments of the Joints

978-1-58779-467-4	Laminated	\$19.95
978-1-58779-710-1	Styrene Plastic	\$29.95
978-1-58779-466-7	Paper	\$10.95

D. 9795 Foot and Ankle

978-1-58779-137-6	Laminated	\$19.95
978-1-58779-686-9	Styrene Plastic	\$29.95
978-1-58779-138-3	Paper	\$10.95

E. 9790 Hand and Wrist

978-1-58779-142-0	Laminated	\$19.95
978-1-58779-694-4	Styrene Plastic	\$29.95
978-1-58779-143-7	Paper	\$10.95

F. 9780 Hip and Knee, 2nd Edition

978-1-58779-866-5	Laminated	\$19.95
978-1-58779-867-2	Styrene Plastic	\$29.95
978-1-58779-865-8	Paper	\$10.95

G. 9799 Shoulder and Elbow

978-1-58779-755-2	Laminated	\$19.95
978-1-58779-685-2	Styrene Plastic	\$29.95
978-1-58779-754-5	Paper	\$10.95

H. 9800 Anatomy and Injuries of the Shoulder

978-1-58779-808-5	Laminated	\$19.95
978-1-58779-809-2	Styrene Plastic	\$29.95
978-1-58779-807-8	Paper	\$10.95

I. 9872 Knee Injuries

978-1-58779-757-6	Laminated	\$19.95
978-1-58779-696-8	Styrene Plastic	\$29.95
978-1-58779-756-9	Paper	\$10.95

J. 8022 Dermatomes

978-1-58779-111-6	Laminated	\$19.95
978-1-58779-112-3	Paper	\$10.95

K. 8024 The Spinal Nerves

978-1-58779-205-2	Laminated	\$19.95
978-1-58779-691-3	Styrene Plastic	\$29.95
978-1-58779-206-9	Paper	\$10.95

L. 8949 The Nervous System

978-1-58779-044-7	Laminated	\$19.95
978-1-58779-690-6	Styrene Plastic	\$29.95
978-1-58779-045-4	Paper	\$10.95

M. 9920 The Brain

978-1-58779-105-5	Laminated	\$19.95
978-1-58779-106-2	Paper	\$10.95

N. 9921 Anatomy of the Brain

978-1-58779-089-8	Laminated	\$19.95
978-1-58779-090-4	Paper	\$10.95

O. 8952 The Vascular System and Viscera

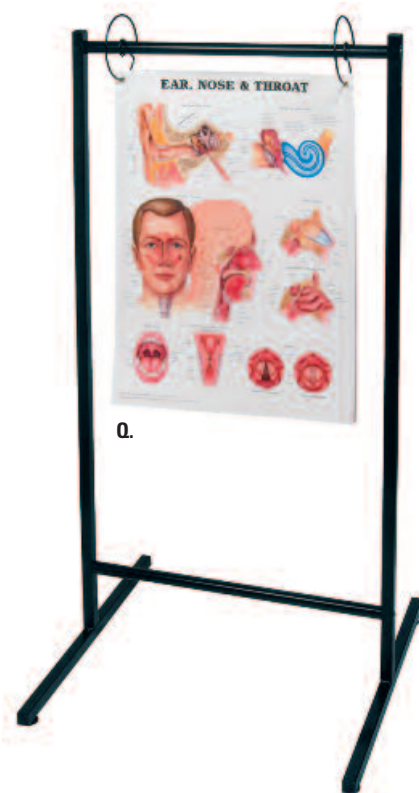
978-1-58779-076-8	Laminated	\$19.95
978-1-58779-077-5	Paper	\$10.95
978-1-58779-082-9	3-Dimensional	\$12.95

P. Space-Saver Floor Display Stand

FDU2 \$279.95
 Hang up to 18 laminated charts on nine steel arms for eye-level viewing. The 17" x 60" floor stand easily converts into a 17" x 30" tabletop unit. Assembles in minutes. Black finish. Weight: 16 lbs. For laminated charts only.

Q. Portable Chart Stand

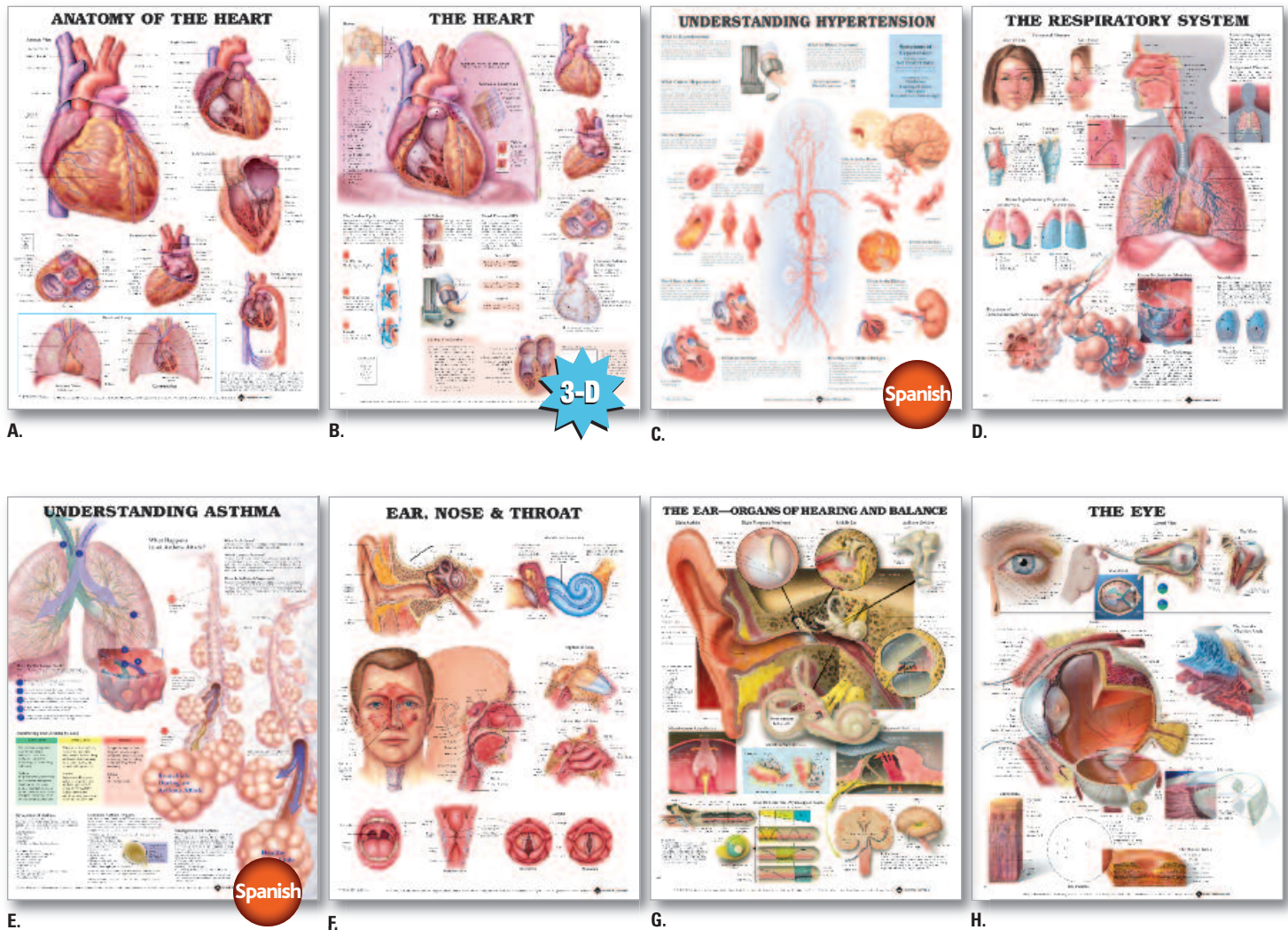
9880 \$109.95
 Lightweight, aluminum stand holds up to 25 same-format charts on adjustable floating rings. Charts flip over for convenient viewing. Black finish. Weight: 8 lbs. Size: 28" x 53".



Q.

View our complete line of anatomical charts at
LWW.com/Anatomical

Best-Selling Anatomical Charts



A. 9878 Anatomy of the Heart, 2nd Edition

978-1-58779-844-3 Laminated\$19.95
978-1-58779-843-6 Paper\$10.95

B. 8023 The Heart

978-1-58779-152-9 Laminated\$19.95
978-1-58779-153-6 Paper\$10.95
978-1-58779-155-0 3-Dimensional\$12.95

C. 9798 Understanding Hypertension

978-1-58779-422-3 Laminated\$19.95
978-1-58779-421-6 Paper\$10.95
978-1-58779-992-1 Laminated (Spanish)\$19.95
978-1-58779-991-4 Paper (Spanish)\$10.95

D. 9766 The Respiratory System

978-1-58779-053-9 Laminated\$19.95
978-1-58779-054-6 Paper\$10.95

E. 9862 Understanding Asthma, 2nd Edition

978-1-58779-938-9 Laminated\$19.95
978-1-58779-937-2 Paper\$10.95
978-1-58779-944-0 Laminated (Spanish)\$19.95
978-1-58779-943-3 Paper (Spanish)\$10.95

F. 9895 Ear, Nose & Throat

978-1-58779-115-4 Laminated\$19.95
978-1-58779-116-1 Paper\$10.95

G. 9890 The Ear—Organs of Hearing and Balance

978-1-58779-120-8 Laminated\$19.95
978-1-58779-121-5 Paper\$10.95

H. 9691 The Eye

978-1-58779-126-0 Laminated\$19.95
978-1-58779-127-7 Paper\$10.95

I. 9859 The Digestive System

978-1-58779-006-5 Laminated\$19.95
978-1-58779-007-2 Paper\$10.95

J. 9861 Diseases of the Digestive System

978-1-58779-236-6 Laminated\$19.95
978-1-58779-237-3 Paper\$10.95

K. 9672 The Male Reproductive System

978-1-58779-030-0 Laminated\$19.95
978-1-58779-031-7 Paper\$10.95

L. 9652 The Female Reproductive System

978-1-58779-020-1 Laminated\$19.95
978-1-58779-021-8 Paper\$10.95

M. Blueprint For Health Series Chart Set

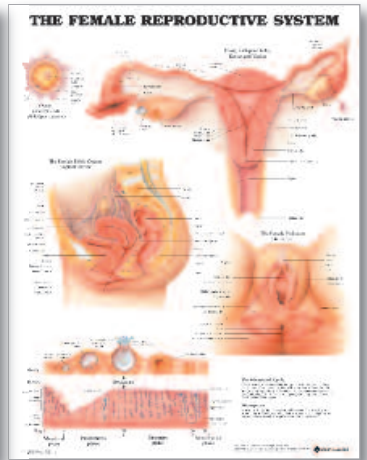
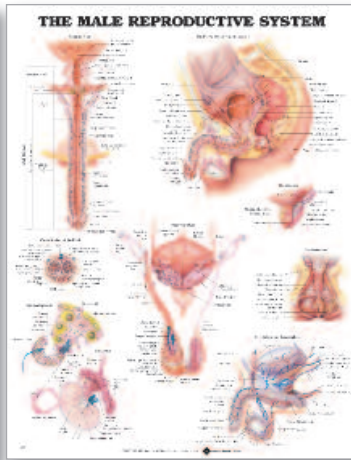
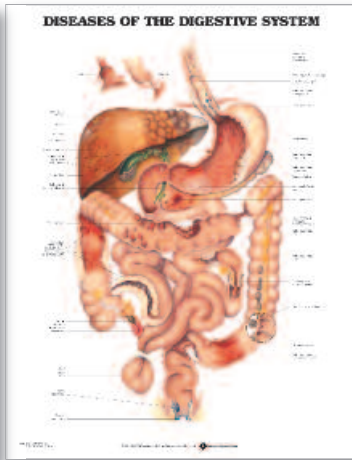
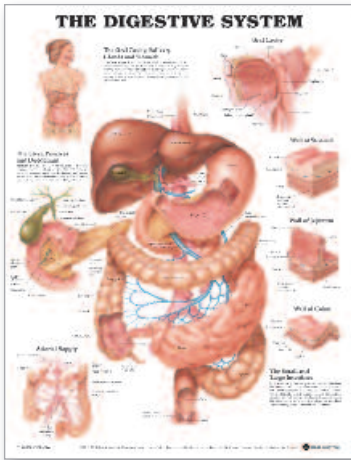
SAVE Save over 20%
KSSET9\$129.00

- A collection of 9 charts designed for 8- to 10-year-olds. Each chart illustrates its subject in colorful, clear pictures. Concepts are explained in easily understood anatomically correct terms and text.
- Each chart measures 20" x 26" and is laminated for durability with eyelets for hanging.

N. Trigger Points I and II Chart Set

TRIGP (heavy paper)\$47.95
TRIGL (laminated)\$67.95

- Shows every trigger point in human anatomy. Important areas are color-coded.
- Set of 2 charts, each 21" x 34"



I.

J.

K.

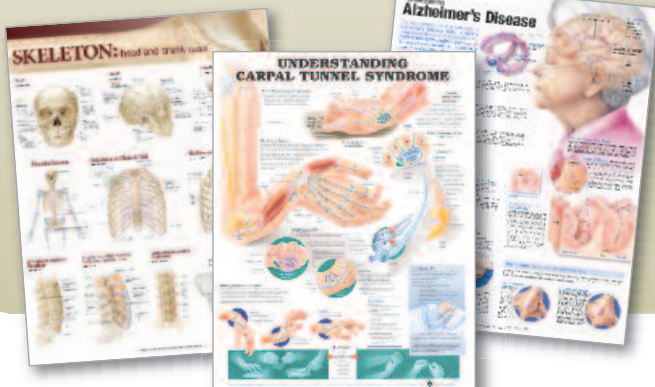
L.



M.

Build your collection with Anatomical Charts!

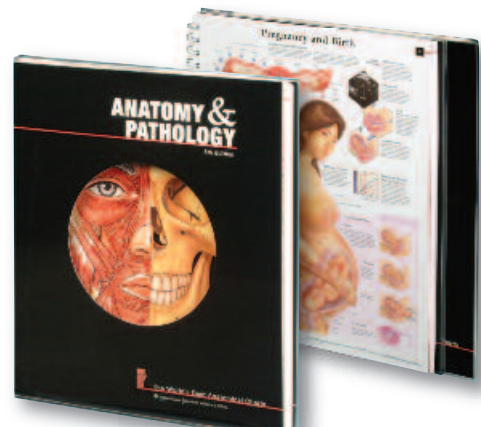
Our wide range of over 150 anatomical charts is available in every specialty area. Go to LWW.com/Anatomical to view our full collection of superior-quality anatomical charts.



N.

Best-Selling Anatomical Chart Collections & Books

The World's Best Anatomical Charts—keep the full collection at your fingertips!



Anatomy & Pathology, Systems & Structures, and Diseases & Disorders are essential additions to every library, whether you are a health care professional, a student, or an interested consumer. The chart format provides a clear and visual understanding of human anatomy, physiology, and diseases. Medical terminology and easy-to-understand supporting text are printed directly on each chart so you never have to refer to separate key cards or manuals. The spiral-bound softcover book format is ideal for studying human anatomy, patient consultation, or quick reference. Size: 10" x 12".

Anatomy & Pathology, 5th Edition—58 Charts

978-0-7817-7356-0 \$32.95

Now fully updated to include more diseases and significant health topics. You'll welcome the ...

- **spiral binding** that allows the book to lie flat for easy reference
- **58 full-color charts** created by elite medical illustrators
- **9 NEW charts** with the latest facts on cardiovascular disease, diabetes, asthma, and other "in-the-news" disorders
- **up-to-the-minute facts** on weight management, sleep disorders, allergies, cancer, pregnancy, and more
- **clear, concise supporting points** printed directly on each chart—no loose papers to misplace.

Systems of the Body – 13 charts
Structures of the Body – 17 charts
Diseases and Disorders – 22 charts
Healthy Lifestyles – 6 charts

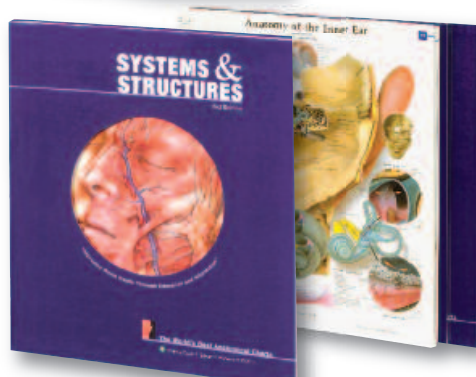


Diseases & Disorders, 3rd Edition—70 Charts

978-0-7817-8211-1 \$40.95

Brain Diseases & Disorders – 9 charts
Cancer – 7 charts
Cardiovascular and Venous Diseases & Disorders – 6 charts
Dental Diseases & Disorders – 2 charts
Digestive System Diseases & Disorders – 3 charts
Endocrine System Diseases & Disorders – 4 charts
Eye and Ear Diseases & Disorders – 3 charts

Infectious Diseases & Disorders – 6 charts
Muscular and Skeletal Diseases & Disorders – 11 charts
Reproductive Diseases & Disorders – 8 charts
Respiratory Diseases & Disorders – 4 charts
Healthy Lifestyle Issues – 7 charts



Systems & Structures, 2nd Edition—41 Charts

978-1-58779-892-4 \$28.95

Systems of the Body – 13 charts
Structures of the Body – 28 charts

Anatomical Visual Guide to Sports Injuries

978-0-7817-7361-4 \$82.95

Anatomical Visual Guide to Sports Injuries, sensibly organized by body region, is a highly visual guide that displays the basic layers of anatomy in key views, movement, and over 150 of the most common sports injuries seen in adult and pediatric patients. In addition to pathology, over 90 mechanisms of select injuries will also be shown in context of a human figure.

With over 350 illustrations, this product helps primary care and sports medicine practitioners explain anatomical and injury concepts to their patients and clients. It can also be used by beginning sports medicine and athletic trainer students as an aid to visual learning.

A BONUS CD-ROM lets you easily print **55 patient teaching handouts** that show clear, anatomically correct images along with explanations of many common sports injuries.



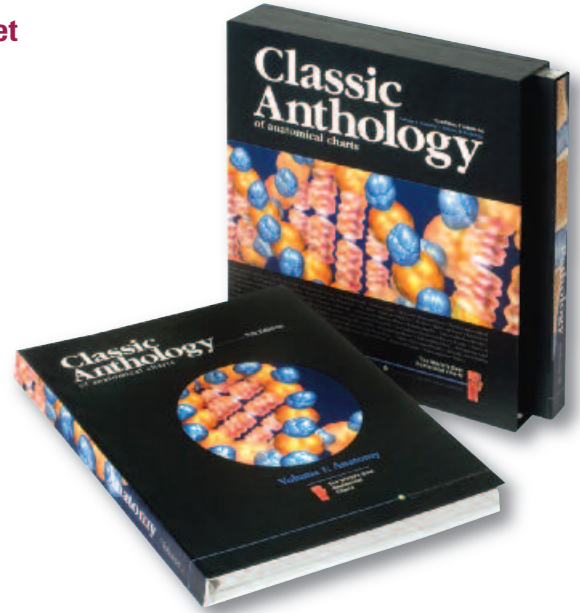
Classic Anthology of Anatomical Charts, 7th Edition, 2-Volume Set

978-0-7817-8665-2 \$99.95

The 7th edition of the **Classic Anthology of Anatomical Charts** features 101 new and updated anatomical charts. A two-volume set housed in its own sturdy box, this beautiful compilation provides a clearer understanding of human anatomy, a visual comparison of physiological principles, and highlighted important pathological conditions. Medical terminology and updated text are printed directly on each chart so you never have to refer to a separate key card or manual.

This edition has been edited to include the most popular anatomical and pathological subjects plus 14 new charts have been added and 20 charts have been updated. Ideal for studying human anatomy, patient consultation, or quick reference, this truly is one of the most comprehensive and attractive compilation of charts on the market. Size: 10" x 12".

- 101 charts printed in vivid, lifelike colors
- Two volumes: Anatomy (40 charts) and Pathology (61 charts)
- Each volume has a hard cover with side-spiral binding
- Attractive and durable storage box
- Write-on/wipe-off laminated pages with dry erase pen (not included)



Anatomical Chart Health Care Education Collection: The Professional's Reference for Patient Communication

978-0-7817-8231-9 \$82.95

Includes 50 of our most popular anatomy and disorder charts, smartly organized and tabbed by therapeutic area. You get ...

- **50 charts** that address cardiovascular disease, the digestive system, understanding asthma, the musculoskeletal system, and more
- **Tabbed pages** that let you quickly find the information you need when talking to patients
- **5 easy-to-print teaching aids** on healthy living in English and in Spanish, **10 aids in all on a BONUS CD-ROM**. Aids are double sided—or two pages, depending on how you print—with room to write notes
- 10" x 12", Easel back, CD-ROM.



Rapid Review Reference Guide, 3rd Edition

Print Edition: 978-1-60547-102-0 \$44.95

MOBILE Powered by Skyscape, Inc.,

Online Deliverable: 978-1-60831-218-4 \$42.95

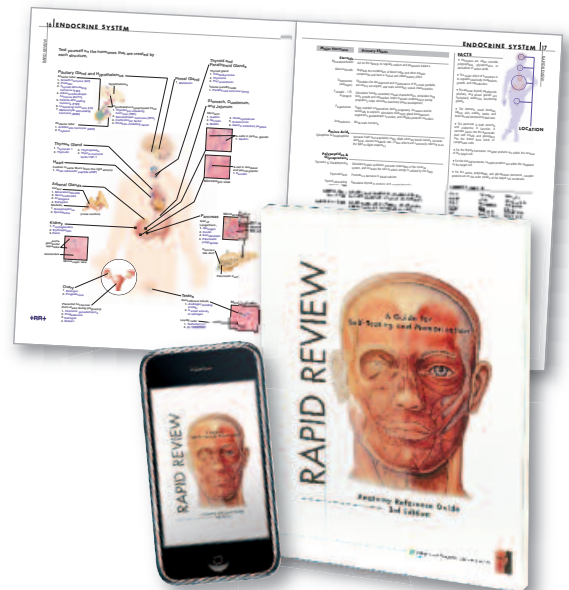
The 3rd edition of the **Rapid Review Anatomy Reference Guide** features 3 new sections—lymphatic system, immune system, and foot and ankle. This study aid continues to be a student favorite not only for its 31 sections of useful content, but because the labels of each system and organ are printed on acetate overlay pages, which allows quick and effective memorization. Designed for high school, college, and healthcare career students, this reference guide can also be used for patient education.

On the left hand side of each section you will find key features for effective studying:

- Illustrations of the major systems, organs and structures
- Labels of the system, organ or structure on acetate overlays for easy self-testing

On the right hand side of each section you will find useful related information:

- Additional 4-color illustrations
- Key facts about the system or organ
- Location of organ or system highlighted on a human figure
- Roots of key words and their meanings
- Related terminology and definitions



Best-Selling Health Education Resources & Training Aids



A. 9"x 14"x 1-1/2"



B. 9"x 14"x 1-1/2"



C. 9"x 14"x 1-1/2"

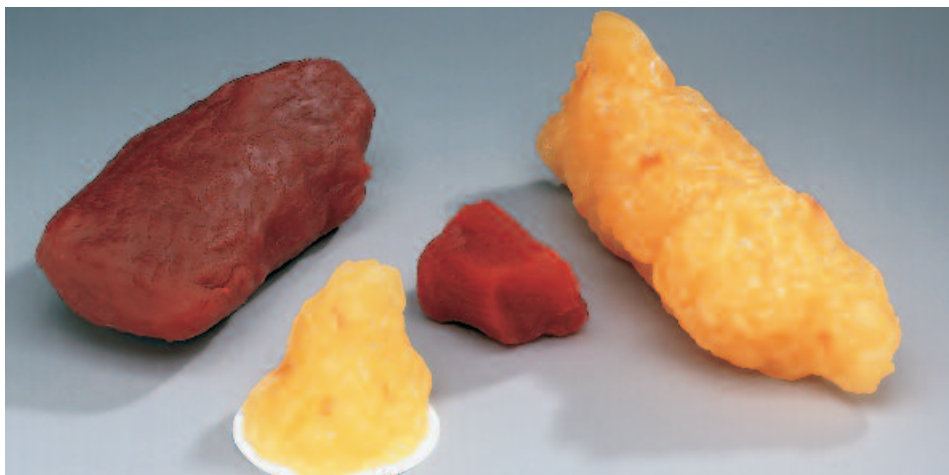
A. How Does Your Fat Stack Up? Display Case
LDA105 \$135.95

B. How Does Your Sugar Stack Up? Display Case
LDSU105 \$134.95

C. How Does Your Salt Stack Up? Display Case
LDSA105 \$134.95

SAVE Set of all 3 — SAVE 10%
LDC05 \$364.00

Our popular display cases reflect current trends in nutrition. Each display demonstrates amounts of hidden fat, sugar, or salt in 18 different foods using real salt, sugar, and realistic pats of butter. An updated selection of common and popular foods is shown. Includes health educator guide.



D.

D. Fat and Muscle Replicas
WA7173 One-lb. Fat Replica \$29.95
WA4313 Five-lb. Fat Replica \$98.95
WA14573 One-lb. Muscle Replica \$30.95
WA8836 Five-lb. Muscle Replica \$82.95
Grossly dramatic replicas of 1 and 5 lbs. of fat and muscle are shocking and motivating attention-getters. (Not anatomically correct.)

E. Complete IV Training Arm Kit
TK1000 \$610.00
1811 (replacement skin and vein kit) \$189.00
Full-size adult right arm designed for venipuncture and injection training. Venous access at the antecubital area and the dorsum of the hand, deltoid injection pad for subcutaneous and intramuscular injections. Includes replacement skin and vein kit, blood and blood bag, tubing, connector, clamp and hook, 5 syringes and carrying case.



E. 3"x 10"x 6"



F. 13-1/2" x 11-1/2" x 14-1/2"

F. Multi-Type Breasts Model
A26426 \$266.00
Featuring breast models that can be picked up and examined, this display highlights the importance of breast self-examination, mammography, and clinical breast exams in the detection of breast cancer and other breast conditions. Model includes a breast without lumps, a breast with fibrocystic tissue, and a breast with lumps and comes with a carrying case.

G. Venipuncture Training Arm
G26220 \$356.95
This lifelike arm model may be injected with a syringe or IV drip at the antecubital fossa, forearm, and back of the hand. Will withstand many sticks and can be easily restored to its original feel with powder. The model may be washed with soap and water. Comes with durable carrying case.



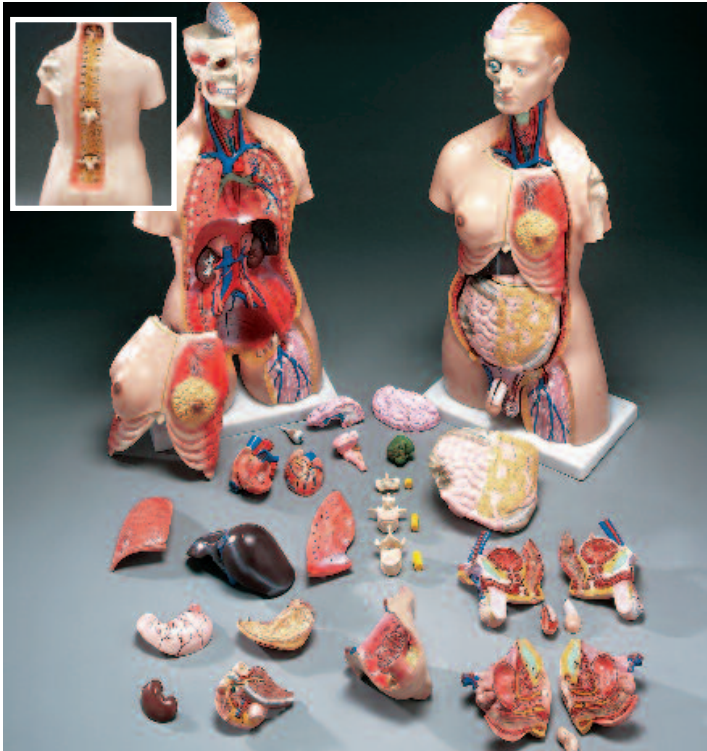
G. 21-1/2"x 1-1/2"x 4"

Nutrition and Healthy Weight Chart Set

SAVE
Save 15% over individual chart prices!

NWC \$30.95
Includes 2 discounted 20"x 26" laminated charts: Maintaining a Healthy Weight and Keys to Healthy Eating, 3rd Edition.





H. 33-1/2" tall

H. Budget Functional Francis Torso

CMT32 \$431.95
 Male/female torso features 32 parts: 3 removable vertebrae, 3 spinal cord segments, a female breast plate, head, eyeball, 4-part brain, 2 half lungs, 2-part heart, liver, one-half kidney, duodenum with pancreas and spleen, 2-part stomach, intestines, 4-part male genitalia, 2-part female genitalia with removable fetus, and a gender neutral bladder cover. Mounted on base.

I. Budget Tall Paul Torso

CMT5 \$232.00
 Dissects into 19 parts: torso, head (2 parts), brain, lung (4 parts), heart, trachea, esophagus and descending aorta, diaphragm, stomach, duodenum with pancreas and spleen, intestines, cecum, kidney, bladder (2 parts), liver. Mounted on base.

J. Budget Whopper Eye Model

CH2 \$48.95
 6-times enlarged. For beginning students. Dissects into 7 parts: top section, vitreous body, bottom section, lens (2 parts), iris, cornea. Mounted on stand.

K. Composite Pelvis and Pelvic Floor

267A \$540.00
 Life-size female pelvis with highly detailed pelvic floor; features genitalia and associated muscles. Dissects into 5 parts.

L. Giant Tooth Brushing Model

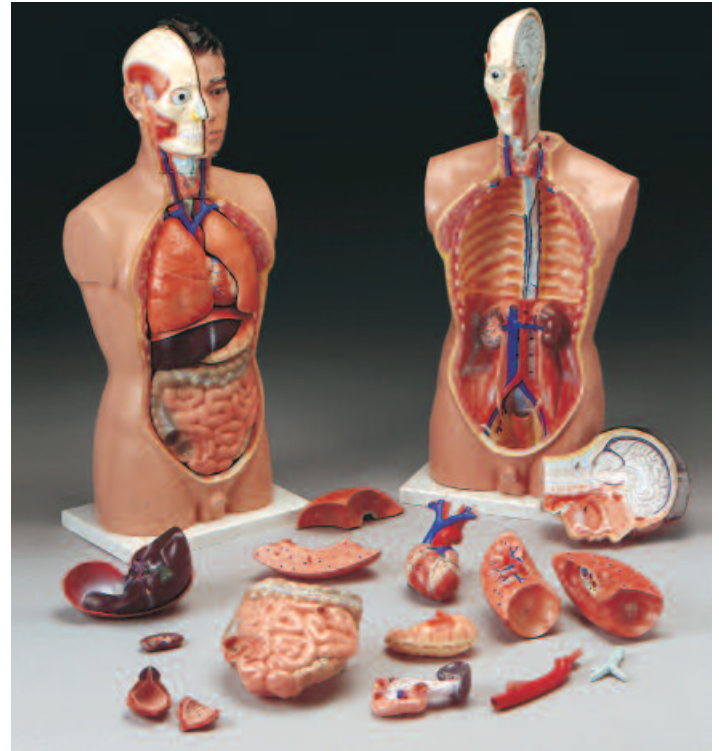
TH01 \$49.95
 Economical model; bendable wire spring allows easy movement. Includes giant-size, soft nylon bristle toothbrush.

M. Flossing and Brushing Teaching Model

W5314 (flossing and brushing model) \$56.50
 W5355 (giant toothbrush model) \$20.95
 2-times enlarged; demonstrates proper brushing and flossing techniques; plastic 11-1/2" toothbrush with soft bristles.

N. Diseased Teeth and Gums Model

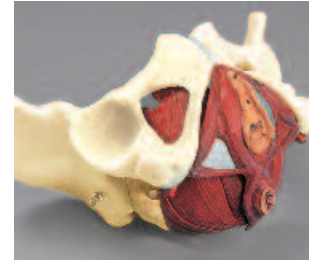
G286 \$80.00
 Oversized; features common problems: abscess, advanced periodontitis, cavity, crown decay filling, gingivitis, plaque, and severe bone loss. Patient education card included.



I. 33-1/2" tall



J. 5-1/2" x 5-1/2" x 6-1/4"



K. 10-1/2" x 7" x 6-1/2"



M. 3" x 3-1/2" x 3-1/2"

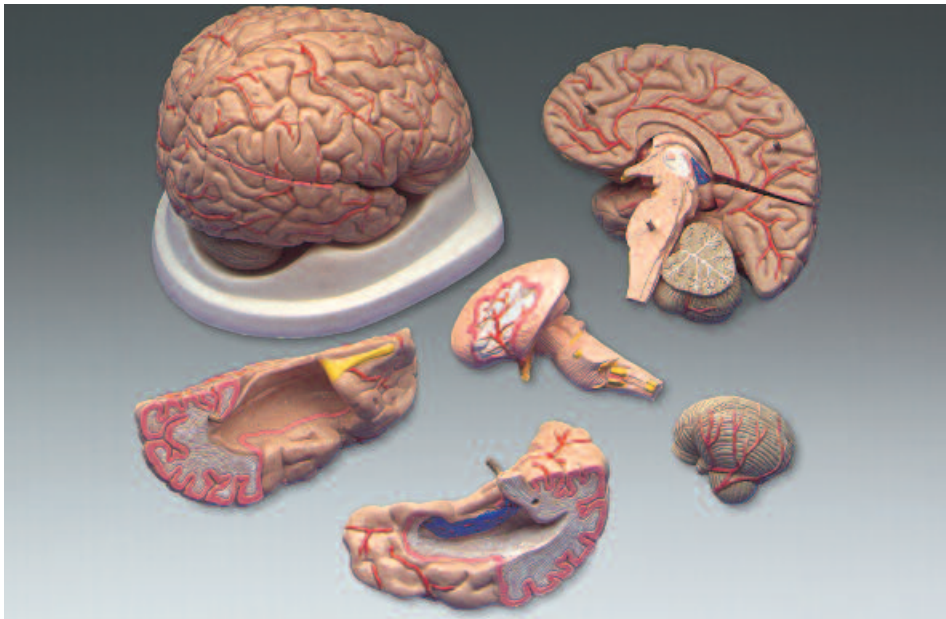


L. 6" from molar to molar; 14-1/2" toothbrush



N. 5-1/2" x 6" x 6"

Best-Selling Anatomical Models: The Brain



A. 5" x 6" x 6"



B. 11" x 18" x 13"



C. 7" x 7" x 11"

A. Budget Brain with Arteries Model

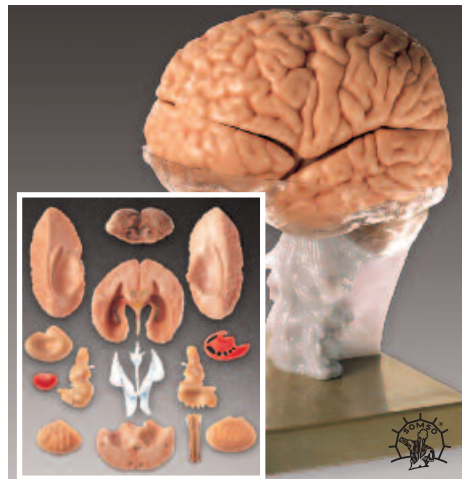
C20C \$57.95
Life-size educational economy model. Color markings illustrate arteries (red) and cranial nerves (yellow). Dissects into 8 parts. Base included.

B. Anatomical Section Model of the Head

BS55 \$4,950.00
Life-size anatomical model. Designed by Dr. J. W. Rohen, this model shows anatomical structures of 10 consecutive horizontal sections through the human head, oriented to the plane usual in CT and MR imaging (CA-CP plane) and which have the same section thickness (0.8 cm). Each cross-section swivels and is removable. With explanatory booklet. Somso® Modelle.

C. Neuroanatomy Head Model

QS657 \$2,499.00
Transparent skull with cervical vertebrae and 8-part brain. Dissects into 10 parts. Cyto-architectural areas indicated, cranial nerves and the arterial vessels shown. Somso® Modelle.



D. 6" x 7" x 9"

D. Brain Demonstration Model

BS25 \$889.00
Life-size, 14-part brain rests in its natural position on a transparent cast of base of skull. Brain separates into cerebral hemisphere (2), temporal and occipital lobes with limbic system, cerebellum, frontal lobe, corpus callosum, brain stem (2), corpus stratum, insula (2), nucleus lentiformis (left), internal capsule (right), and ventricles of the brain. Somso® Modelle.

E. Budget Brain Model

CH1 \$37.95
Plastic replica of a human brain showing multiple views. Great for hands-on study of brain anatomy. Dissects into 3 parts. Sits on a base.



E. 5" x 6" x 6-1/2"

ALSO AVAILABLE ...

Save 15% over individual chart prices!



Neurology Chart Set 1

NEURO1 \$50.95
• Includes 3 charts: Understanding Multiple Sclerosis; Understanding Parkinson's Disease, 2nd Edition; and Understanding Alzheimer's Disease, 2nd Edition

SAVE

SAVE

Neurology Chart Set 2

NEURO2 \$50.95
• Includes 3 charts: Understanding Pain; Understanding Low Back Pain; and The Spinal Nerves



More brain and nervous system models available at
LWW.com/Anatomical



F. 8" x 8" x 13"



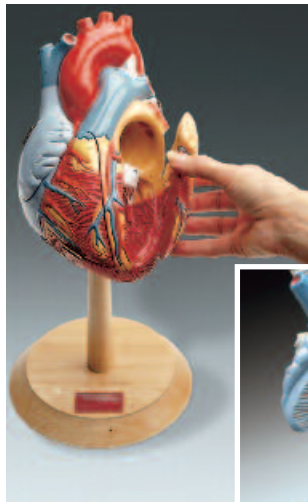
G. 10" x 10" x 13"



H. 8" x 8" x 11-3/4"



I. 7" x 7" x 17"



J. 7" x 7" x 15"



K. 3-1/4" x 3-1/4" x 6"

ALSO AVAILABLE ...

Save 15% over individual chart prices!



Cardiology Chart Set 1

CARDIO1 \$33.95

- Includes 2 charts: The Heart; and Heart Disease, 2nd Edition

SAVE

Cardiology Chart Set 2

CARDIO2 \$67.80

- Includes 4 charts: Understanding Hypertension; Understanding Type 2 Diabetes, 2nd Edition; Understanding Cholesterol; and Cardiovascular Disease



SAVE

F. Danny Smith Heart Model

HE2000 \$475.00
2-times life-size model with 60+ coded structures. All 4 chambers open for internal viewing. Removable from stand.

G. Human Heart Model

HS5 \$741.00
2-times the size of a healthy adult heart. Detailed to illustrate the musculature of the heart and large blood vessels. Sectioned so ventricles and atria open to expose the valves. Dissects into 4 parts. Removable from green® stand. Somso® Modelle.

H. Budget Jumbo Heart Model

CH3 \$66.95
4-times life-size jumbo heart model, excellent for patient education or elementary science classes. Dissects into 3 parts showing anterior, posterior, and interior views along with valve details. Mounted on a stand.

I. Heart of America Model Plus™ with Coronary Bypasses

DG139 \$475.00
2-times the size of a healthy adult heart. Attachable and detachable bypass vessels let you demonstrate single, double, triple, LIMA, and bilateral IMA coronary bypasses and a normal heart without bypasses. Denoyer-Geppert Co.

J. Giant Heart of America™ Model

DG140 \$425.00
2-times the size of a healthy adult heart. View interior and exterior by opening 3 hinged doors. Instructor's key identifies 65 labeled parts. Denoyer-Geppert Co.

K. Budget Life-Size Heart Model

CH7 \$24.95
Great for learning basic internal and external anatomy of the heart. Dissects into 2 parts.

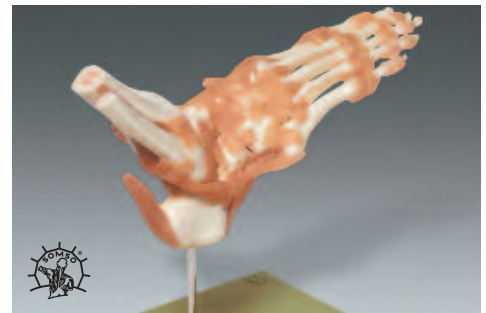
Best-Selling Skeletal Models: The Hand & Foot



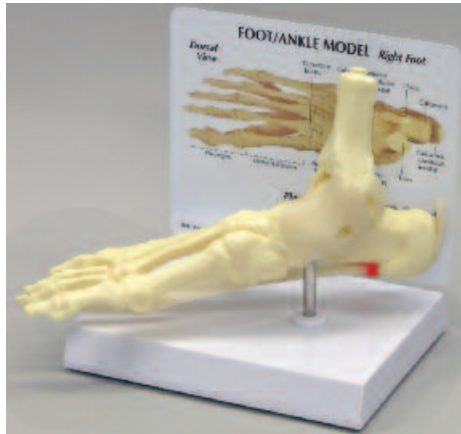
A.



B.



C. 7" x 10-1/2" x 12-1/2"



D. 9" x 2-3/4" x 4"



E. 24" tall



F. 30" tall

A. Elastic Foot Demonstration Model

A-31SPR (right foot – shown) \$84.95
 A31SPL (left foot – not shown) \$84.95
 Life-size. Features portion of tibia and fibula strung on elastic. Specify right or left extremity when ordering foot. 3B Scientific GmbH.

B. Elastic Foot Model

OS31E \$94.95
 Life-size right foot strung on elastic cord. Lower part of tibia, fibula and metatarsals are wired together.

C. Functional Model of the Foot and Ankle

NS54 \$799.00
 Right foot and ankle with ligamentous apparatus. Demonstrates rotary movements, bending and extension. Includes teaching manual. Removable from green® stand. Does not dissect. Made of SOMSO-Plast® Somso® Modelle.

D. Foot and Ankle Model

G198 \$87.00
 Right foot features the platar calcaneonavicular (spring) ligament with plantar fasciitis. Also includes tibia, fibula, calcaneus, calcaneal (Achilles) tendon, deltoid ligament, lateral (collateral) ligament, plantar aponeurosis, cuneiform, phalanges, cuboid, navicular, and metatarsal bones. Removable from base. Includes patient education card.

E. Muscles of the Arm (Left)

M10 \$507.00
 Top layers of muscles are removable to reveal the blood vessels and nerves. Dissects into 6 parts; all parts are numbered. 3B Scientific GmbH.

F. Muscles of the Leg (Left)

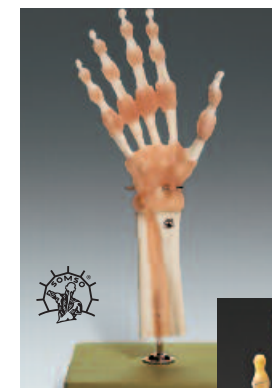
M20 \$679.00
 Top layers of muscles are removable to reveal the blood vessels and nerves. Dissects into 9 parts; all parts are numbered. Base included. 3B Scientific GmbH.

G. Functional Model of the Hand and Wrist

NS55 \$728.00
 Right hand with portion of radius, ulna, and ligamentous apparatus. Bending, extension, abduction and adduction of the fingers, and palmar flexion can be demonstrated. Removable from green® stand. Includes teaching manual. Does not dissect. Somso® Modelle.

H. Muscles of the Hand Model

NS13 \$799.00
 Removable palmar aponeurosis and superficial muscles reveal the deep layer. Includes blood vessels and nerves. Dissects into 5 parts. Removable from green® stand. Somso® Modelle.



G. 7" x 7-1/2" x 12-1/2"



H. 5-1/2" x 4-1/2" x 13-1/2"

+ **ALSO AVAILABLE ...**
Save 15% over individual chart prices!

Hand and Foot Chart Set

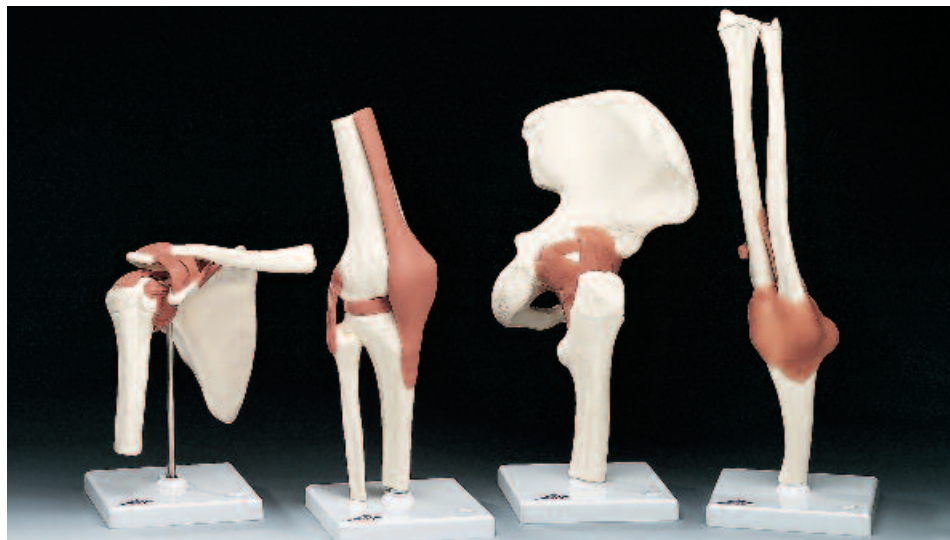
HWI \$50.95

- Includes 3 charts: Anatomy & Injuries of the Hand & Wrist, Anatomy & Injuries of the Foot & Ankle, and Understanding Carpel Tunnel Syndrome





I. 13-1/2" x 7" x 7"



J. 6-1/2" x 5" x 8"

K. 5" x 5" x 13"

L. 6" x 6" x 12-1/2"

M. 5" x 5" x 15-1/2"



N. 10" x 8" x 9"



O.

P. 3-1/2" x 3" x 10"

I. Functional Model of the Knee Joint

NS-50\$240.00

Right knee features detachable ligament system allowing complete view of each ligament, bone, and cartilage. Demonstrates range of motion, including flexion, extension, and inner and outer rotation. Removable from green® stand. Somso® Modelle.

J. Functional Shoulder Joint (Right)

A80\$88.95

Illustrates abduction, adduction, anteversion, retroversion, and internal/external rotation. Includes flexible, artificial ligaments. Removable from stand. 3B Scientific GmbH.

K. Functional Knee Joint (Right)

A82\$88.95

Demonstrates flexion, extension, and internal/external rotation. Includes flexible artificial ligaments. Removable from stand. 3B Scientific GmbH.

L. Functional Hip Joint (Right)

A81\$86.95

Demonstrates anteversion, retroversion, and rotation. Includes flexible artificial ligaments. Removable from stand. 3B Scientific GmbH.

M. Functional Elbow Joint (Right)

A83\$86.95

Demonstrates extension, flexion, and rotation of radius. Includes flexible artificial ligaments. Removable from stand. 3B Scientific GmbH.

N. Functional Model of the Shoulder Joint

NS-53\$279.00

Right shoulder joint features detachable ligament system, allowing views of each bone, ligament, and cartilage. Demonstrates arm raising, front and back swinging, and inner/outer rotation. Ligaments made of sturdy elastic. Removable from green® stand. Somso® Modelle.

O. Life-Size Muscled Joint Set

Save \$25 over individual model prices! **SAVE**

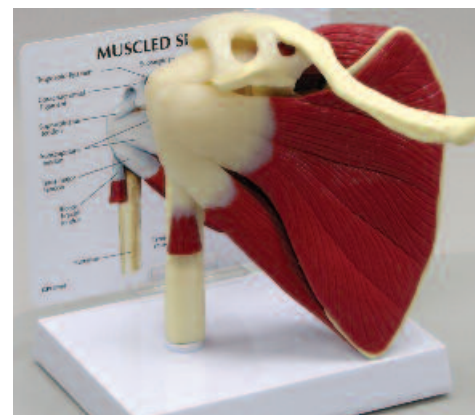
GP4\$410.00

Includes muscled elbow (G185), shoulder (G181), knee (G106), and hip joint (G131). Includes patient education cards.

P. Muscled Knee Joint Model

G106\$107.00

Articulating right knee with meniscus, fibular collateral, tibial collateral, anterior/posterior cruciate, and patellar ligament with patella. Extended femur and patellar ligament connected to top of quadracep. Includes patient education card. Base included.



Q. 5-1/2" x 6" x 6"

Q. Muscled Shoulder Joint Model

G181\$101.95

Semi-articulating right rotator cuff model has encapsulated humerus that is removable from capsular ligament. Includes ligaments and the infraspinatus, teres minor, teres major, and subscapularis and supraspinatus muscles. Includes patient education card.

Best-Selling Skeletal Models: The Skull & Spine



A. 5" x 8-1/2" x 6"



B. 5-1/2" x 8" x 6"



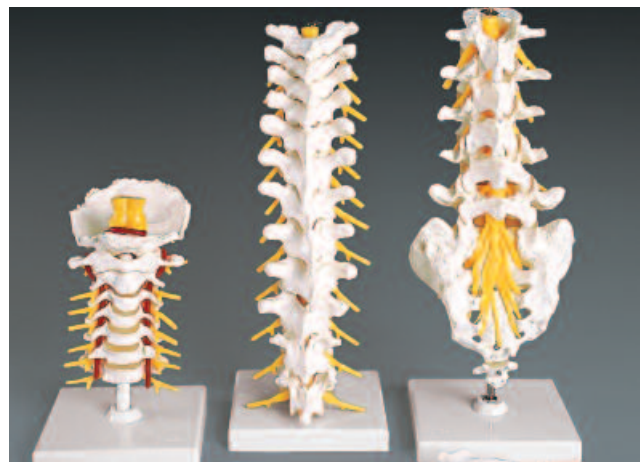
C. 5-1/2" x 8" x 6"



D. 5" x 8-1/2" x 6"



E. 5" x 5" x 13"



F. 5" x 6" x 7"

G. 5" x 4" x 13"

H. 5" x 5" x 13"



I. 5-3/4" x 10-1/2"

A. Budget Skull

CS20 \$33.95
Economic life-size adult plastic skull features movable jaw, cut calvarium, suture lines, and 3 removable lower teeth—incisor, cuspid, and molar. Dissects into 3 parts.

B. Classic Human Skull

A20 \$98.00
High-quality plastic reproduction of a human skull that includes sutures, foramen, and styloid processes. The calvarium is cut and jaw is on springs. Dissects into 3 parts. 3B Scientific GmbH.

C. Disarticulated Human Skull

QS83 (color coded) \$754.00
QS8/2 (bone color—insert) \$579.00
Life-size; consists of 14 parts that can be dismantled and snapped back together. Includes: sphenoid, occipital, 2 temporal, 2 parietal, frontal, right and left maxilla, the lacrimal, nasal and palatine bone, facial, cranial and zygomatic bones, and mandible which fits into sockets with a hinged joint. Somso® Modelle.

D. Budget Two-Piece Skull

CH-S2 \$25.95
Plastic life-size adult skull features movable jaw and an uncut calvarium.

E. Flexible Lumbar Vertebral Column with Herniated Disc

A76/5 \$106.00

Includes spinal cord and nerve branches and illustrates herniation of dorsolateral intervertebral disc. Sacrum has removable flap to reveal nerves. Removable from stand. 3B Scientific GmbH.

Flexible Vertebral Column Region Models

F. A72 (cervical) \$88.00
Functional model of 7 cervical vertebrae with normal intervertebral discs that includes a segment of spinal cord with medulla, pons, cerebral peduncle, and nerve branches. Not removable from stand. 3B Scientific GmbH.

G. A73 (thoracic) \$86.00
12 thoracic vertebrae, intervertebral discs, and nerve branches. Not removable from stand. 3B Scientific GmbH.

H. A74 (lumbar) \$97.00
5 lumbar vertebrae, coccyx, and sacrum with removable cutaway. Also features normal intervertebral discs and nerve branches. Not removable from stand. 3B Scientific GmbH.

I. Four-Stage Vertebrae Set

G176 \$149.00
4 pairs of life-size lumbar vertebrae in 3 stages of degeneration. Shown are a normal pair of lumbar vertebrae, a pair with a bulging herniated disc, a vertebrae set with bone and disc degeneration and advanced osteoporosis with serious bone compression and bone spurs. Models do not dissect. Includes removable patient education card and base.



J. 29" tall

J. Budget Vertebral Column

CH59X \$99.95
Includes vertebral body, spinous and transverse processes, vertebral notch and spinal canal, complete pelvis, sacrum, occipital bone, vertebral artery and nerve branches, herniated disc between the 4th and 5th lumbar vertebrae. Stand included.

K. Male Vertebral Column

A59/1 \$119.95
Flexible spine, with pelvis, occipital bone, vertebral artery, and dorsal herniated disc between the 3rd and 4th lumbar vertebrae. No stand. 3B Scientific GmbH.

L. Vertebral Column and Femoral Heads

A59/1F \$139.95
Flexible; same as A59/1, with movable femoral heads. No stand. 3B Scientific GmbH.

Spine Stand

SM91 \$22.95
34" tall metal stand for hanging spines, as shown with item K. Black finish.



K. 29" tall

M. Desk-Size Vertebral Column

CS85X \$51.95
Features nerve branches, vertebral artery, movable femur heads, occipital bone, pelvis, and herniated lumbar disc. Flexible.

N. Soft Disc Vertebral Column

Z4009 \$308.00
Features very flexible metal rod core and foam discs to illustrate compression. Removable from stand.

O. Muscle Spine with Disorders

CH5900 \$188.95
Spinal curvatures are color-coded. Includes occipital bone and cerebellum, circle of Willis, vertebral artery, spinal nerves with sciatic nerve, right brachial plexus, 1st and 2nd ribs, sacroiliac ligaments and several muscles including: suboccipital triangle, longus capitis, scalene muscles, psoas major and minor, iliacus, gluteus medius and



L. 32" tall



O. 34" tall

minimus, piriformis, and gemellus. Disorders shown: bone spurs on L5; herniated disc between L4 and L5; and L1, L2, and L3 divide to show compression fractures, osteoporosis, bone tumor, and osteoarthritis of the hip. Stand included.

P. Skeletal Torso

VC126 \$979.00
A life-size flexible spine, with rib cage, shoulders, pelvis and movable femur heads with the corresponding muscles and ligaments. Shows the cervical plexus and the brachial plexus, suboccipital triangle, greater occipital nerve, sciatic nerve complex, as well as the major thoracic and lumbar muscles. The right shoulder is fully articulated and features all ligaments, capsule of shoulder joint, teres major and muscles of the rotator cuff. Vertebrae are color-coded, facet syndrome at L4-L5. Stand included.



M. 18" tall

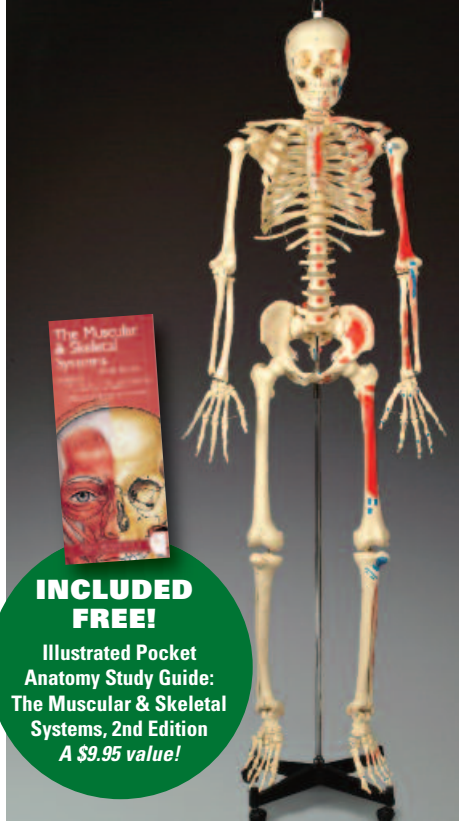


P. 34" tall

Best-Selling Skeletal Models: Skeletons



A. 5'5" tall



INCLUDED FREE!
Illustrated Pocket Anatomy Study Guide: The Muscular & Skeletal Systems, 2nd Edition
A \$9.95 value!

B. 5'6" tall



C. 5'5" tall



D. 5'5" tall

A. Mr. Superskeleton

A13 \$899.95
 Features joint ligaments, flexible spine with nerve endings, muscle origins and insertions. Skull dissects into 3 pieces with removable calvarium and lower jaw. Flexible spine includes all spinal nerves and vertebral artery. Skull, left arm and leg are detachable. Muscle insertions and origins are painted in red and blue on left side. Right side has ligaments of shoulder, elbow, hip, and knee. Left side is numbered. 3B Scientific GmbH.

B. Painted & Numbered Budget Bucky™ Skeleton

CH168 \$394.95
 Life-size skeleton has muscle insertions and origins painted on the left side of the skeleton and numbers of important features on the right side. Calvarium is cut with moveable jaw mounted on springs. All joints articulate. Arms, legs and skull are removable. Includes a rolling stand, and our **Illustrated Pocket Anatomy Study Guide: The Muscular & Skeletal Systems, 2nd Edition**. Also includes extra hardware for emergency repairs. Choking hazard: small parts. Not for children under 3 years.

C. Mr. Plain Skeleton

A10 \$349.95
 Articulated adult human skeleton for teaching purposes. Arms and legs are removable. Skull dissects into 3 parts with the mandible on spring (32 teeth). Mounted with a metal rod extending from sacrum on mobile stand. 3B Scientific GmbH.

D. Mr. Flexible Skeleton

A15 \$689.00
 Flexible spine holds various positions. All fissures, foramen and anatomical details reproduced. Skull is dissectible into 3 parts: calvarium, base, and lower jaw. Upper and lower extremities are flexibly mounted and removable. Rotation and movements of skull on cervical vertebrae can be demonstrated. Spine includes nerves and vertebral artery. Flexible spine demonstrates natural movements of the human body. Mounted on a mobile stand. 3B Scientific GmbH.

E. Deluxe Skeleton Half-Painted with Labeled Muscles

SK1005 \$1,840.00
 The right side of this life-size skeleton is hand-painted to show muscle origins in red and insertions in blue. Muscle names are hand-lettered at each muscle origin and insertion location. Removable calvarium and maxilla shows inside of cranium and paranasal sinuses. Detachable mandible is spring-mounted. Bones of one hand and foot on opposite sides are articulated with springs for joint flexibility. Bones are x-ray opaque. Skeleton disarticulates into 12 pieces. Rolling metal stand included.

F. Disarticulated Budget Skeleton with Skull

CHA5/1 (full) \$163.95
 CHA4/1 (one-half, not shown) \$99.95
 Life-size, disarticulated adult skeleton includes 3-part skull, left hand, and left foot on wire. Also available as one-half disarticulated adult skeleton which includes the left hand and left foot on wire. Cannot be assembled.

G. Mr. Thrifty™ Skeleton

WCP-1 \$64.95
 Economical teaching skeleton with user-friendly personality will encourage children to learn the names of bones; details will satisfy students, doctors and anyone interested in the human skeleton. Removable calvarium. Stand included. Choking hazard: small parts. Not for children under 3 years.

H. Flexible Mr. Thrifty™ Skeleton with Spinal Nerves

WCP1NX \$84.95
 More advanced version of Mr. Thrifty™ Skeleton features flexible spine with spinal cord, nerve roots, the vertebral artery,

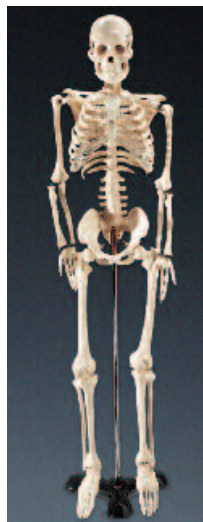
View more skeletal models at
LWW.com/Anatomical



E. 5'4" tall



F.



G. 33-1/2" tall

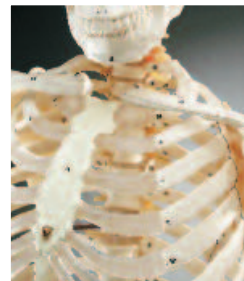


H. 33-1/2" tall



INCLUDED FREE!

Illustrated Pocket Anatomy Study Guide: The Muscular & Skeletal Systems, 2nd Edition
A \$9.95 value!



I./J. 5'6" tall

a herniated disc, cartilage, removable 3-piece skull, and extremities. Popular desktop model for rehabilitation, physical therapy and sports medicine professionals. Stand included. Choking hazard: small parts. Not for children under 3 years.

I. Budget Bucky™ Skeleton

CH10\$300.00
Life-size articulated adult skeleton, ideal for teaching the basics of anatomy. Articulated joints allow for movement. Skull, arms and legs are removable. Features nerve branches, vertebral artery, and herniated lumbar disc. Skull with movable jaw, cut calvarium, suture lines, and 3 removable lower teeth. Includes rolling stand and the **Illustrated Pocket Anatomy Study Guide: The Muscular & Skeletal Systems, 2nd Edition**. Also includes extra hardware for emergency repairs. Choking hazard: small parts. Not for children under 3 years.

J. Numbered Budget Bucky™ Skeleton

CH10N (inset picture shown)\$311.95
Same as item CH-10 but with 200 numbered parts to identify the various bones. Includes a rolling stand, and

Illustrated Pocket Anatomy Study Guide: The Muscular & Skeletal Systems, 2nd Edition.

K. Painted Big Tim Skeleton

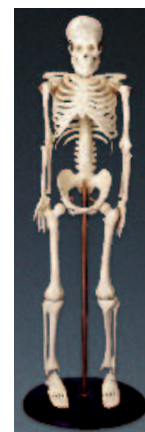
CMS65\$49.95
Has muscle insertions and origins painted on the left side and numbers of important features on the right side. Calvarium is cut and jaw is spring mounted. Arms, legs and skull are removable. Stand included. Choking hazard: small parts. Not for children under 3 years.

L. My First Skeleton (Tiny Tim)

CMS1\$24.95
Our most popular miniature skeleton offers hands-on learning for curious kids who want to understand how many, locations, and shapes of the bones that make up the human skeleton. Special features include a moveable jaw, a skull whose calvarium opens for a look inside, and removable arms and legs. For a classroom teaching model, please consider our Mr. Thrifty budget skeletons. Stand included. Choking hazard: small parts. Not for children under 3 years.



K. 25-1/2" tall



L. 16-1/2" tall



**ANATOMICAL
CHART COMPANY**

P.O. Box 1600
Hagerstown, MD 21741-1600

2-A900 A

2012 Best-Selling Products Catalog

Today's most essential anatomical aids are at your fingertips!

Enhance your classroom, office, or exam room
with our best-selling charts and models.



Visit LWW.com/Anatomical for our full offering
of charts, models, reference books, and novelties.