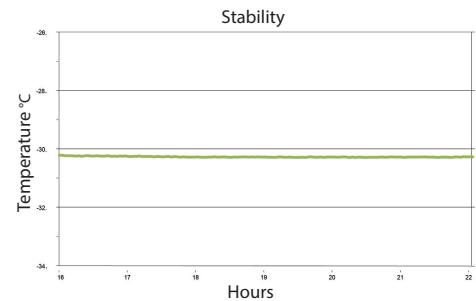
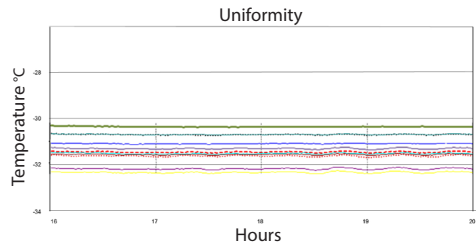
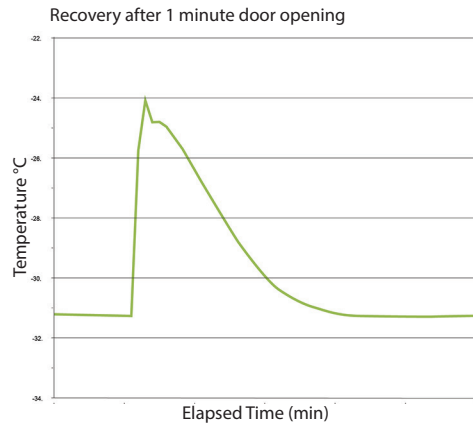


Application, Rating, & Electrical Data	
Application	High-performance storage of medical and scientific products
Storage Volume	5.3 cu ft (150 L)
Temperature Range	-15° to -30°C
Set-Point	-30°C
Electrical Power	115V 60Hz   220-240V 50/60Hz
Maximum Current	4.1A   2.0A
Facility Supply Rating	Branch circuit with earth ground, meeting plug/cord ratings as well as local electrical safety codes and requirements 110-120V AC: 15 A (minimum) 220-240V AC: 10 A (minimum)
Power Plug/Power Cord Length	NEMA 5-15 hospital-grade   115V 60Hz, 8 to 10 ft (2.4-3.0m) Inquire about additional plug/cord options
Certification/Agency Listing	QPS (Certified to UL and CSA Standards) IEC/UL61010-2-011: 2016   IEC 61010-1:2010, AMD1:2016 ETL certified to NSF/ANSI 456 Vaccine Storage Standard*
Energy Star	Yes, ENERGY STAR® Certified High Performance Freezer
ADA Compliant	Yes, fits under standard ADA compliant countertop
Indoor/Outdoor Use	Indoor use only, non-residential
Application Environment	Non-corrosive, non-flammable, non-explosive
Ambient Operating Temperature	+15°C to +32°C   +59°F to +90°F
Refrigeration	
Refrigeration System	VCC compressor-based, forced-air hydrocarbon
Compressor	Hermetic, variable speed (VCC). Rated speed range: 1600-4000 rpm
Condenser Type	Air-cooled fin and tube, sealed
Expansion Device	Cap tube
Evaporator Type	Direct expansion with forced-air fin and tube
Defrost Method	Automatic
Refrigerant	R290, Propane, EU F-Gas and EPA SNAP compliant
Controller / Configuration Settings	
User Interface	i.C3® color touchscreen, door-mounted, 7 in   177 mm, °C or °F
Power Switch	On/Off
Controller Type	Microprocessor with touchscreen input & display
Security	Lockable door, password protected settings, PIN access via optional access control
Control Sensor	RTD, stainless steel
Communication Ports	USB, Remote alarm contacts, RJ45 (Ethernet), API available for Ethernet connectivity development
Power Failure Alarm	Yes
High/Low Alarms - Tests	Yes, fully adjustable, automatic (Peltier) testing
Door Ajar Alarm	Yes, fully adjustable
Condenser Temperature Alarm	Yes, fully adjustable
Min/Max Temperature	Yes, display and reset
Download	Yes, via USB in PDF or CSV format
Event Log	Yes, all alarms, door openings, download via USB
Temperature Log	Yes, download via USB
Access Log	Yes, with optional access control, download via USB
Interactive Temperature Graph	Yes
Temperature Monitoring	Yes, 4 oz bottle with screw cap
Battery Back-up	Yes, 20 hr display and alarm back-up for i.C3® touchscreen   Rechargeable 12V, lead acid

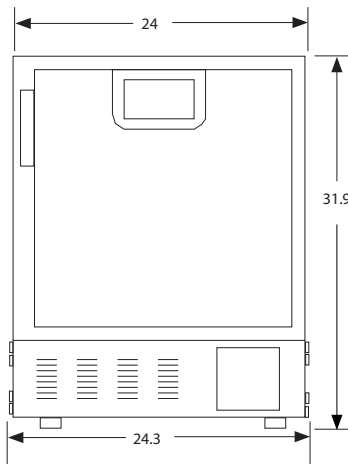
\*Must be configured with NSF/ANSI 456 Vaccine Storage Certification option (includes Certificate of Calibration)

Performance Characteristics (normal operating conditions)	
Uniformity   °C	+/-2.0
Recovery to 29.5°C after 1 min door opening   min	23
Stability   °C	0.1
Energy consumption   kWh/day	3.99
Noise emission   dB	46
Heat rejection   BTU/hr	1701
Pull-down time to -30°C   min	70

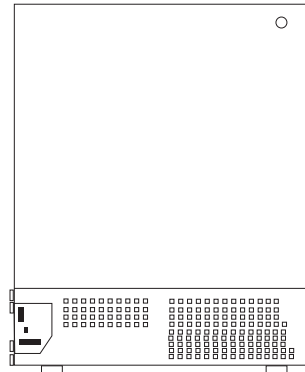
All performance data from 5 cu ft freezer, 25°C ambient, -30.0°C



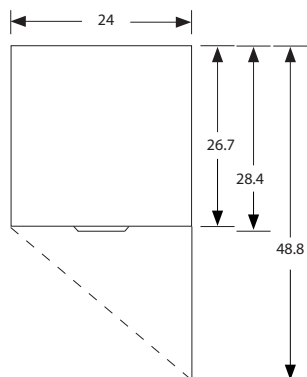
Dimensions and Construction	
Interior (w x h x d)	19.5 x 19.9 x 22.8 in   496 x 505 x 580 mm
Exterior (w x h x d)	24 x 31.5 x 26.7 in   610 x 798 x 678 mm *Add 2.5" to the height if choosing optional casters.
Overall Exterior (w x h x d)	24.3 x 31.9 x 28.4 in   617 x 809 x 721 mm *Add 0.3" to width if choosing optional access control *Includes leveling feet, door handle, user interface, and access panels. *The maximum height added with leveling feet at highest level or casters installed is 2" (51 mm)
Insulation	Sustainable, US EPA, and SNAP approved foam
Exterior/Interior Finish	Bacteria-resistant powder-coating
Door	Solid, field-reversible
Access Port	Rear Access Port- for external monitoring probe(s) (0.75 in   19 mm diameter)
Interior Storage (w x d)	2 ventilated, powder coated shelves, adjustable 17.9 x 21.3 in   454 x 541mm, 100 lb   46 kg max capacity/shelf
Leveling Feet	Yes, adjustable
Integrated Access Control	Optional - electromagnetic-lock with PIN entry via i.C <sup>3</sup> * user interface
Net Weight	179 lb   82 kg
Shipping Weight	240 lb   110 kg
Clearance Requirements	Minimum 3" (76 mm) behind unit for for plug/cord and feature access Front ventilation eliminates the need for top or side clearance
Options   Accessories	Integrated access control, Stainless steel exterior/interior, Chart recorder, Chart paper, Swivel/ Locking casters, Remote alarms, Remote lock adapter kit, Floor and Wall bracket kit, Stacking kit, Pedestal, Ventilated drawer, Storage trays, Screen protector, Left-hinge door, NSF/ANSI 456 Vaccine Storage Certification (includes Certificate of calibration), Temperature validation, Validation guide (IQ/OQ), Certificate of Calibration, Extended warranty
Certificate of Calibration	Yes, available as an option, generated with an ISO 17025 certified, NIST traceable thermometer (Certificate of Calibration is included with the NSF/ANSI 456 Vaccine Storage Certification option)
Warranty	Reli™ Warranty - 5 years compressor, 2 years parts, 1 year labor Outside US and Canada - Contact your distributor for warranty information



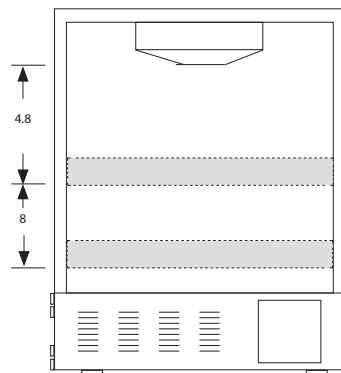
FRONT VIEW



BACK VIEW



TOP VIEW



INTERIOR VERTICAL SPACING