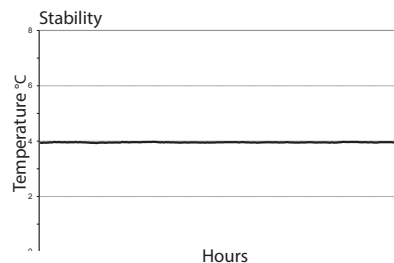
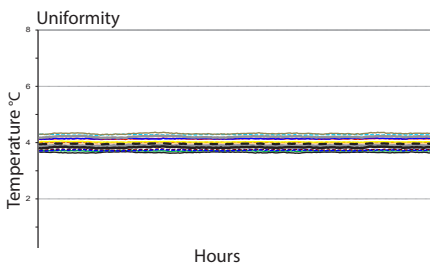
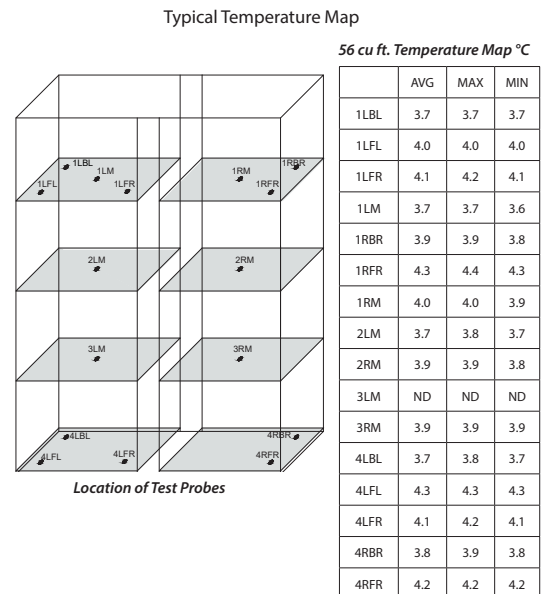
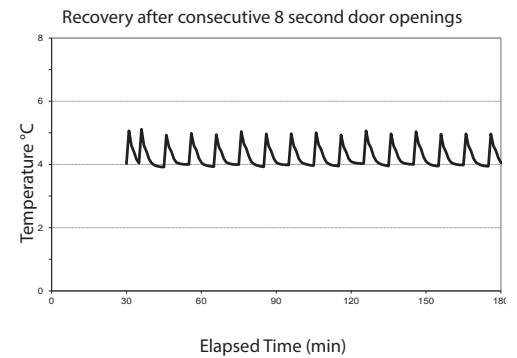


| Application, Rating, & Electrical Data |   |
|--|---|
| Application                            | High performance storage of medical and scientific products   |
| Storage Volume                         | 56 cu ft   1586 L   |
| Temperature Range                      | +2°C to +10°C   |
| Set Point                              | +4°C  |
| Electrical Power                       | 115V 60Hz   220-240V 50/60Hz  |
| Maximum Current                        | 4.3A   2.5A   |
| Facility Supply Rating                 | Branch circuit with earth ground, meeting plug/cord ratings as well as local electrical safety codes and requirements<br>110-120V AC: 15 A (minimum)<br>220-240V AC: 10 A (minimum) |
| Power Plug/Power Cord Length           | NEMA 5-15 hospital-grade   115V 60Hz, 8 to 10 ft (2.4-3.0m)<br>Inquire about additional plug/cord options   |
| Certification/Agency Listing           | QPS (Certified to UL and CSA Standards)<br>IEC/UL61010-2-011: 2016   IEC 61010-1:2010, AMD1:2016<br>ETL certified to NSF/ANSI 456 Vaccine Storage Standard*                         |
| Energy Star                            | Yes, ENERGY STAR® Certified High Performance Refrigerator   |
| Indoor/Outdoor Use                     | Indoor use only, non-residential  |
| Application Environment                | Non-corrosive, non-flammable, non-explosive   |
| Ambient Operating Temperature          | +15°C to +32°C   +59°F to +90°F   |
| Refrigeration                          |   |
| Refrigeration System                   | VCC compressor-based, forced-air hydrocarbon  |
| Compressor                             | Hermetic, variable speed (VCC). Rated speed range: 1300-4000 rpm  |
| Condenser Type                         | Air-cooled fin and tube, sealed   |
| Expansion Device                       | Cap tube  |
| Evaporator Type                        | Direct expansion with forced-air fin and tube   |
| Defrost Method                         | Automatic   |
| Refrigerant                            | R600a, Isobutane, EPA SNAP compliant  |
| Controller / Configuration Settings    |   |
| User Interface                         | i.C3® color touchscreen, door mounted, 7in   177mm, °C or °F  |
| Power Switch                           | On/Off  |
| Controller Type                        | Microprocessor with touchscreen input & display   |
| Security                               | Lockable doors, password protected settings   |
| Control Sensor                         | RTD, stainless steel  |
| Communication Ports                    | USB, Remote alarm contacts, RJ45 (Ethernet). API available for Ethernet connectivity development  |
| Power Failure Alarm                    | Yes   |
| High/Low Alarms - Tests                | Yes, fully adjustable, automatic (Peltier) testing  |
| Door Ajar Alarm                        | Yes, fully adjustable   |
| Condenser Temperature Alarm            | Yes, fully adjustable   |
| Min/Max Temperature                    | Yes, display and reset  |
| Download                               | Yes, via USB. CSV and PDF   |
| Event Log                              | Yes, all alarms, door openings, download via USB  |
| Temperature Log                        | Yes, download via USB   |
| Interactive Temperature Graph          | Yes   |
| Temperature Monitoring Ballast         | Yes, two 4 oz bottles with screw caps, solid ballasts optional  |
| Battery Back-up                        | Yes, 20 hr display & alarm back up for i.C3® touchscreen   Rechargeable 12V, lead acid  |

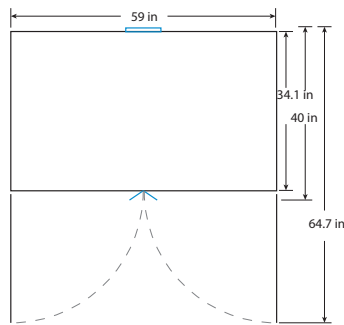
\*Must be configured with NSF/ANSI 456 Vaccine Storage Certification option (includes Certificate of Calibration)

| Performance Characteristics                    |        |
|--|--------|
| Uniformity   °C                                | +/-1.0 |
| Recovery to 8°C after 3 min door opening   min | 7      |
| Stability   °C                                 | 0.07   |
| Energy Consumption   kWh/day                   | 3.94   |
| Noise emission   dB                            | 52     |
| Heat Rejection / Emission   BTU/hr             | 1195   |
| Pull-down time to 4°C   min                    | 46     |

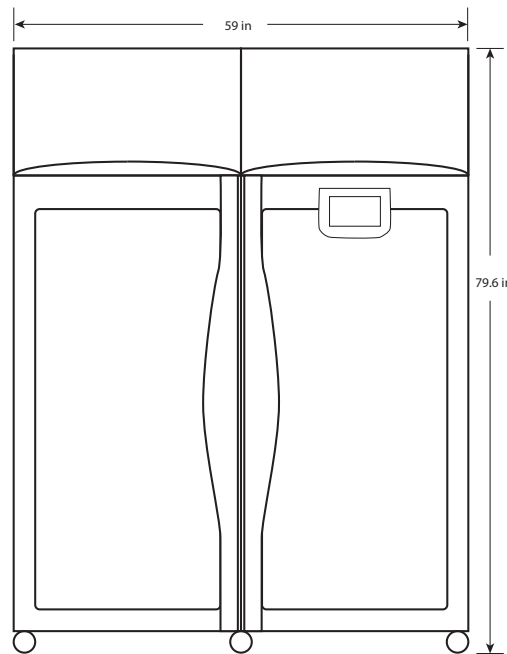
All performance data from 56 cu ft refrigerator, 24.8°C ambient, 4.0°C



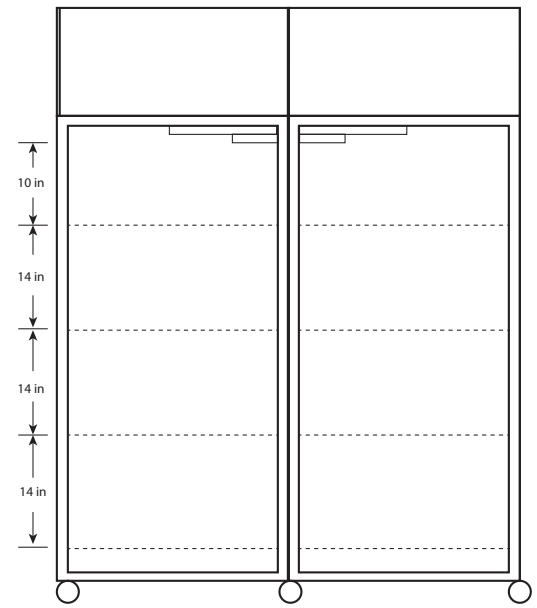
| Dimensions and Construction  |   |
|------------------------------|---|
| Interior (w x h x d)         | 54.7 x 58.1 x 30 in   1390 x 1476 x 762 mm  |
| Exterior (w x h x d)         | 59 x 79.6 x 34.1 in   1499 x 2021 x 865 mm  |
| Overall Exterior (w x h x d) | 59 x 79.6 x 40 in   1499 x 2021 x 1015 mm<br>*Includes handles and electrical box<br>*subtract 0.2" from depth for units prior to serial number 2150000   |
| Insulation                   | Sustainable, US EPA and SNAP approved foam  |
| Exterior/Interior Finish     | Bacteria-resistant powder-coating   |
| Door                         | 2, dual-pane glass  |
| Access Port                  | Top Access Port - for external monitoring probe(s) (0.75 in   19 mm diameter)<br>Left Sidewall Port - with interior and exterior plugs (1.75 in   45 mm diameter)   |
| Interior Storage (w x d)     | 8 ventilated, powder coated shelves, adjustable<br>22.5 x 27.9 in   572 x 709 mm, 100 lb   46 kg max capacity/shelf   |
| Casters                      | Yes, swivel-locking   |
| Net Weight                   | 703 lb   319 kg   |
| Shipping Weight              | 823 lb   374 kg   |
| Clearance Requirements       | Minimum of 8" (203mm) above and 3" (76mm) behind unit for proper ventilation, clearance, and feature access   |
| Options   Accessories        | Stainless steel interior, Chart recorder, Chart paper, Leveling feet, Solid ballast, Remote alarms, Floor and Wall bracket kit, Seismic anchoring kit, Storage trays, Screen protector, Locking drawer, Solid or heated glass doors, Top cover, Side-wall access ports, NSF/ANSI 456 Vaccine Storage Certification (includes Certificate of calibration), Temperature validation, Validation guide (IQ/OQ), Certificate of calibration, Extended warranty |
| Certificate of Calibration   | Yes, available as an option, generated with an ISO 17025 certified, NIST traceable thermometer (Certificate of Calibration is included with the NSF/ANSI 456 Vaccine Storage Certification option)  |
| Warranty                     | Reli™ Plus Warranty- 7 years compressor, 2 years parts, 1 year labor<br>Outside US and Canada- Contact your distributor for warranty information  |



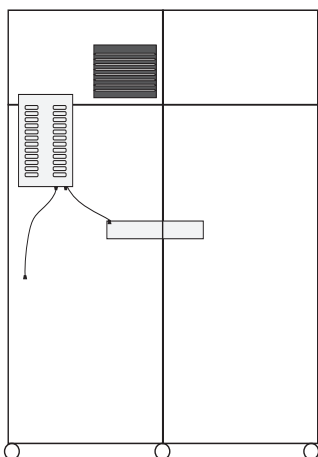
TOP VIEW



FRONT VIEW



INTERIOR VERTICAL SPACING



BACK VIEW