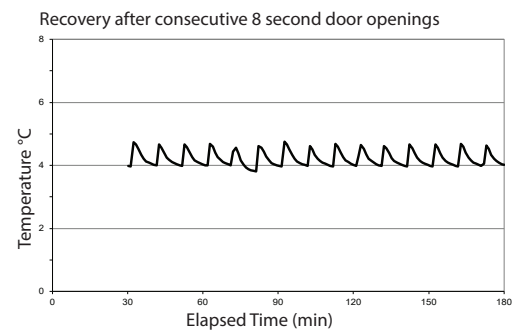


| Application, Rating, & Electrical Data |   |
|--|---|
| Application                            | High performance storage of medical and scientific products   |
| Storage Volume                         | 20.2 cu ft   572 L  |
| Temperature Range                      | +2°C to +10°C   |
| Set Point                              | +4°C  |
| Electrical Power                       | 115V 60Hz   220-240V 50/60Hz  |
| Maximum Current                        | 2.8A   1.55A  |
| Facility Supply Rating                 | Branch circuit with earth ground, meeting plug/cord ratings as well as local electrical safety codes and requirements<br>110-120V AC: 15 A (minimum)<br>220-240V AC: 10 A (minimum) |
| Power Plug/Power Cord Length           | NEMA 5-15 hospital-grade   115V 60Hz, 8 to 10 ft (2.4-3.0m)<br>Inquire about additional plug/cord options   |
| Certification/Agency Listing           | QPS (Certified to UL and CSA Standards)<br>IEC/UL61010-2-011: 2016   IEC 61010-1:2010, AMD1:2016<br>ETL certified to NSF/ANSI 456 Vaccine Storage Standard*                         |
| Energy Star                            | Yes, ENERGY STAR® Certified High Performance Refrigerator   |
| Indoor/Outdoor Use                     | Indoor use only, non-residential  |
| Application Environment                | Non-corrosive, non-flammable, non-explosive   |
| Ambient Operating Temperature          | +15°C to +32°C   +59°F to +90°F   |
| Refrigeration                          |   |
| Refrigeration System                   | VCC compressor-based, forced-air hydrocarbon  |
| Compressor                             | Hermetic, variable speed (VCC). Rated speed range: 1300-4000 rpm  |
| Condenser Type                         | Air-cooled fin and tube, sealed   |
| Expansion Device                       | Cap tube  |
| Evaporator Type                        | Direct expansion with forced-air fin and tube   |
| Defrost Method                         | Automatic   |
| Refrigerant                            | R600a, Isobutane, EPA SNAP compliant  |
| Controller / Configuration Settings    |   |
| User Interface                         | LED digital display, °C or °F   |
| Power Switch                           | On/Off  |
| Controller Type                        | Microprocessor-based with alarm/monitor   |
| Security                               | Lockable door, PIN access via optional access control   |
| Control Sensor                         | RTD, stainless steel  |
| Communication Port                     | Remote alarm contacts   |
| Power Failure Alarm                    | Yes   |
| High/Low Alarms                        | Yes, fully adjustable   |
| Door Ajar Alarm                        | Yes   |
| Min/Max Temperature                    | Yes, display and reset  |
| Temperature Monitoring Ballast         | Yes, 4 oz bottle with screw cap, solid ballast optional   |
| Battery Back-up                        | Yes, 9V, non-rechargeable, lithium  |

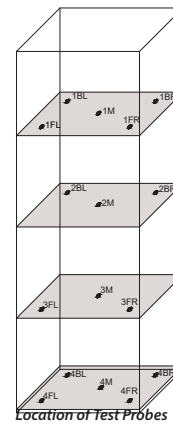
\*Must be configured with NSF/ANSI 456 Vaccine Storage Certification option (includes Certificate of Calibration)

| Performance Characteristics                    |        |
|--|--------|
| Uniformity   °C                                | +/-1.0 |
| Recovery to 8°C after 3 min door opening   min | 9      |
| Stability   °C                                 | 0.07   |
| Energy Consumption   kWh/day                   | 3.04   |
| Noise emission   dB                            | 49     |
| Heat Rejection / Emission   BTU/hr             | 879    |
| Pull-down time to 4°C   min                    | 44     |

All performance data from 20 cu ft refrigerator, 24.8°C ambient, 4.0°C

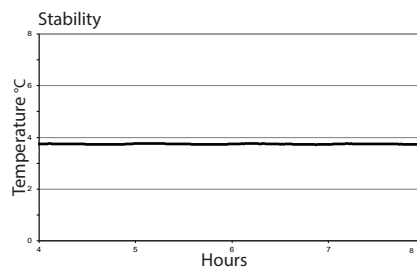
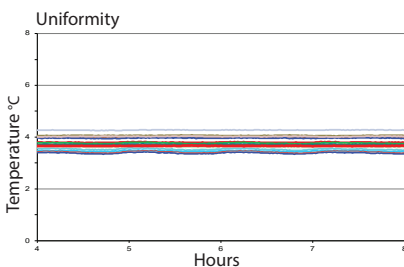


Typical Temperature Map



20 cu ft. Temperature Map °C

|     | AVG | MAX | MIN |
|-----|-----|-----|-----|
| 1BL | 3.6 | 3.6 | 3.5 |
| 1BR | 3.5 | 3.6 | 3.5 |
| 1FL | 3.8 | 3.8 | 3.8 |
| 1FR | 4.0 | 4.0 | 4.0 |
| 1M  | 3.8 | 3.8 | 3.7 |
| 2BL | 3.4 | 3.4 | 3.3 |
| 2BR | 3.5 | 3.5 | 3.4 |
| 2M  | 3.7 | 3.7 | 3.7 |
| 3FL | 4.0 | 4.0 | 3.9 |
| 3FR | 4.1 | 4.1 | 4.0 |
| 3M  | 3.7 | 3.7 | 3.6 |
| 4BL | 3.4 | 3.5 | 3.4 |
| 4BR | 3.6 | 3.6 | 3.5 |
| 4FL | 4.3 | 4.3 | 4.2 |
| 4FR | 4.0 | 4.1 | 4.0 |
| 4M  | 3.6 | 3.7 | 3.6 |



| Dimensions and Construction  |   |
|------------------------------|---|
| Interior (w x h x d)         | 24.7 x 58.1 x 24 in   628 x 1476 x 609 mm   |
| Exterior (w x h x d)         | 29 x 78.9 x 28.1 in   737 x 2003 x 712 mm   |
| Overall Exterior (w x h x d) | 29.1 x 78.9 x 33 in   738 x 2003 x 837 mm<br>*add 0.5" to width if choosing optional access control<br>*subtract 0.2" from depth for units prior to serial number 2150000   |
| Insulation                   | Sustainable, US EPA and SNAP approved foam  |
| Exterior/Interior Finish     | Bacteria-resistant powder-coating   |
| Door                         | 1, dual-pane glass, right-hinge   |
| Access Port                  | Top Access Port- for external monitoring probe(s) (0.75 in   19 mm diameter)<br>Left Sidewall Port - with interior and exterior plugs (1.75 in   45 mm diameter)  |
| Interior Storage (w x d)     | 4 ventilated, powder coated shelves, adjustable<br>22.5 x 21.9 in   572 x 557 mm, 100 lb   46 kg max capacity/shelf   |
| Casters                      | Yes, swivel-locking   |
| Integrated Access Control    | Optional- electromagnetic-lock with PIN entry via keypad  |
| Net Weight                   | 442 lb   201 kg   |
| Shipping Weight              | 535 lb   243 kg   |
| Clearance Requirements       | Minimum of 8" (203mm) above and 3" (76mm) behind unit for proper ventilation, clearance, and feature access   |
| Options   Accessories        | Integrated access control, Stainless steel interior, Chart recorder, Chart paper, Leveling feet, Solid ballast, Remote alarms, Remote lock adapter kit, Floor and Wall bracket kit, Seismic anchoring Kit, Storage trays, Locking drawer, Left-hinge door, Solid or heated glass door, Top cover, Side-wall access ports, NSF/ANSI 456 Vaccine Storage Certification (includes Certificate of calibration), Temperature validation, Validation guide (IQ/OQ), Certificate of calibration, Extended warranty |
| Certificate of Calibration   | Yes, available as an option, generated with an ISO 17025 certified, NIST traceable thermometer (Certificate of Calibration is included with the NSF/ANSI 456 Vaccine Storage Certification option)  |
| Warranty                     | Rel.i™ Warranty- 5 years compressor, 2 years parts, 1 year labor<br>Outside US and Canada- Contact your distributor for warranty information  |

