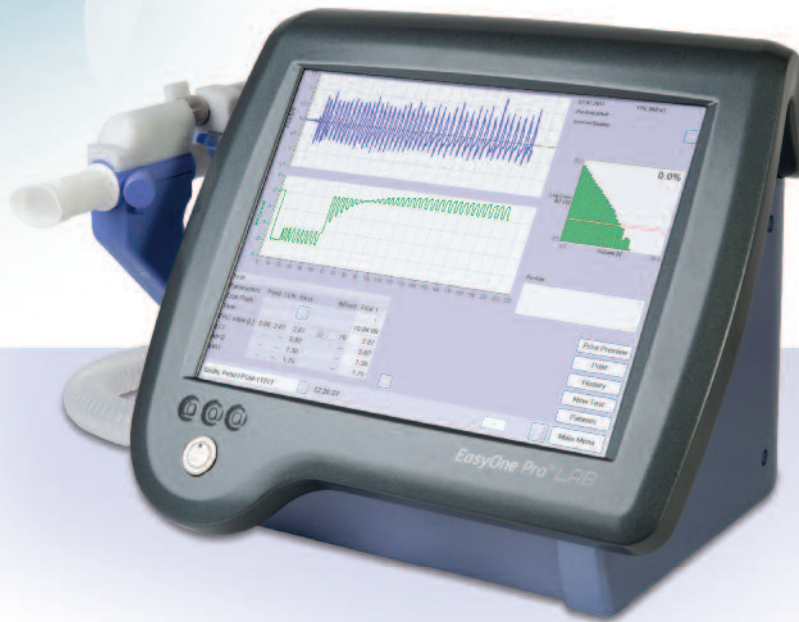




EasyOne Pro[®] LAB

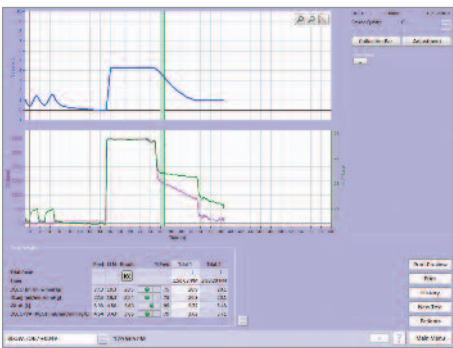
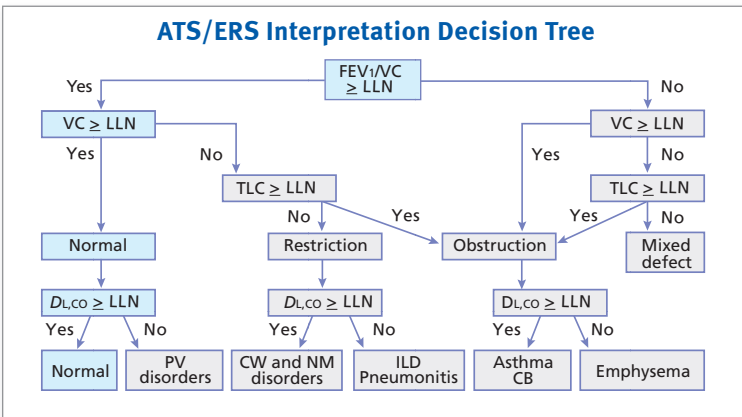
*Multiple-breath nitrogen washout to obtain complete lung volumes,
FRC and LCI (lung clearance index)*



Features

EasyOne Pro LAB offers improved efficiency and quality of care by providing complete pulmonary function testing on site

- Multiple-Breath N₂ washout for FRC, RV, TLC, LCI
- Single Breath CO Diffusion (DLCO)
- Spirometry
- Flexible EMR capabilities
- No warm-up time
- High-resolution color touch screen
- Automatic and fast calibration for each test performed
- Automated ATS/ERS interpretation
- Challenge testing with manitol and methacholine protocols
- Wide range of data export options
- Easy raw data export for scientific use
- No service contracts
- Easy software upgrades
- Remote support capability



Single breath DLCO measurement

Specifications

Flow/Volume Sensor

Type: Ultrasonic transit-time

Range: ±16 l/s

Resolution: 4 ml/s

Accuracy: ±2% or 0.02 l/s

Resistance: < 1.5 cmH₂O/l/s at 12 l/s

CO Sensor

Type: Non-dispersive infrared

Range: 0 to 0.35%

Resolution: 0.0001%

Accuracy: < 0.001%

Tracer Gas Sensor (Helium, N₂)

Type: Ultrasonic transit-time

Range: 0 to 50%, 0 to 100%

Resolution: 0.01%, 0.05%

Accuracy: 0.05%, 0.2%

CO₂ Sensor

Type: Non-dispersive infrared

Range: 0 to 15%

Resolution: 0.005%

Accuracy: ±0.05% (from 0 to 5%)

Standards

Quality System: ISO 9001, ISO 13485

FDA: 510(k) market clearance

MDD 93/42/EEC: CE marked

Electrical: EN 60601-1, EN 60601-1-2

Electrical and Environmental Requirements

Supply: 100 to 240 VAC, 50/60 Hz

Temperature: 10 to 40°C

Humidity: 30 to 75% (non condensing)



nddmedical

nddmedical

nddmed

nddmedical

