



APRONS • EYEWEAR • BARRIERS • ACCESSORIES


bar-ray[®]
personal radiation protection



bar-ray.com

 Bar Ray Products

 @BarRayProducts

 Bar-Ray Products

TABLE OF CONTENTS

Bar-Ray Products Introduction	2
Aprons & Wearables, Apron Protection Options.....	3
Aprons.....	4
Cool Pack Insert.....	20
Sizing Charts	21
Your Logo Page	22
Fabric Swatches.....	24
Embroidery.....	63
Apron Accessories.....	66
Patient Accessories	70
Pediatric Patient Accessories	72
Gloves	74
Protective Eyewear & Shields.....	76
Apron Racks.....	88
X-Ray Accessories.....	92
Barriers, Shields & Curtains.....	100
Veterinarian	108
Fabric Swatch Index	110

World's largest manufacturer of radiation protective garments and vinyls.

Since 1930, Bar-Ray Products has been the leading manufacturer of x-ray aprons and innovative personal radiation protection products. Bar-Ray provides a large variety of protective materials to suit most diagnostic and imaging applications from healthcare to airport screening. Bar-Ray's products are fully tested and warranted for one year to assure quality, safety and satisfaction.

Bar-Ray ships worldwide and is ISO certified with CE registered.

Inside this catalog, you'll find our full line of aprons and protective apparel; fabric swatches; patient and pediatric patient accessories; protective eyewear, shields and protective laser eyewear; apron racks and accessories.

To request a product quote for items contained in this catalog, we invite you to learn more about Bar-Ray by visiting our website www.bar-ray.com.

Thank you for choosing Bar-Ray Products for all of your personal radiation protection needs.

COMFORT FEATURES

Padded shoulders and Velcro straps provide comfort and reduce slippage during use.

PATTERNS

Select from among hundreds of designs available from our extensive fabric swatch library.

VERTICALLY INTEGRATED

We manufacture the protective material in our own factory, allowing us to control all aspects of workmanship.



APRONS & WEARABLES

Bar-Ray's extensive line of protective aprons comprises 12 different styles, four protection options and more than 400 colors and patterns suitable for use in a variety of professions and budget ranges. With the unique stretch back design, available on several styles of our aprons, the apron weight is transferred from the shoulders to the waist and hip region to alleviate stress on the neck and back.

In addition, our apron products contain features such as elastic belts that provide essential back support for both short-length and longer procedures. Shoulder pads offer additional comfort for the wearer during use.

Bar-Ray has been a leader in the radiation protection industry, developing innovative protective apron products. Over the decades, Bar-Ray has focused on creating lighter-weight aprons made from the best high quality protective material manufactured exclusively in our own U.S. factory. Our in-house manufacturing operations allow us to control the quality of the workmanship that goes into the production of each product. With a variety of monogram and embroidery options available, Bar-Ray can personalize your apron to your needs.

APRON PROTECTION OPTIONS

- **Prestige**, a lead-free, lightest weight protection material, only from Bar-Ray. Prestige is available in an 'Ultra' version with 0.35mm protection. 'Ultra' is nominally 30 percent lighter than 0.50mm protection.
- **Starlite** is a lead-free, lightweight protection material ideally suited to individuals conducting long medical procedures. Starlite is also available in an 'Ultra' version.
- **Truelite** was the first introduction to lightweight lead protection materials, introduced by Bar-Ray more than 10 years ago. Today, Truelite remains the leader in lightweight lead protection. Truelite offers 0.50mm protection and is also available in an 'Ultra' version, yielding 0.35mm protection.
- **Cost Cruncher** is the traditional weight lead protective material, used frequently by technicians who do not require extended intervals of time for apron use. Cost Cruncher provides 0.50mm protection and is also available in an 'Ultra' version, yielding 0.35mm protection.



Shown in Fun and Fashion Print #744

PERSONALIZATION AVAILABLE

See page 65 for monogram options.

POCKET INCLUDED

See page 65 for embroidery options.

ADDED COMFORT

Shoulder pads offer additional comfort.

VELCRO STRAPS

Shrug shoulders to highest point, attach Velcro straps and release shoulders. By doing so, the apron weight is transferred from the shoulders to the waist area, reducing stress on the neck and back.



VARI-WEIGHT

Designed to handle greater weight distribution, the Vari-Weight is our most popular apron style. The Vari-Weight attaches to the body with two fully adjustable Velcro straps. The straps cross over the back and attach at the front waist area, keeping the apron securely in place on the shoulders. Pads in the shoulders provide extra comfort.

0.50MM PROTECTION

- 55350 PRESTIGE (Lightest Weight — Lead Free)
- 45350 STARLITE (Lightweight — Lead Free)
- 65350 TRUELITE (Lightweight — Contains Lead)
- 60008 COST CRUNCHER (Traditional Weight — Contains Lead)

0.35MM PROTECTION

- 75350 PRESTIGE (Lightest Weight — Lead Free)
- 85350 STARLITE (Lightweight — Lead Free)
- 35350 TRUELITE (Lightweight — Contains Lead)
- 30008 COST CRUNCHER (Traditional Weight — Contains Lead)

60099 Upcharge Aprons Larger Than Sizes Found on Chart

PERSONALIZATION AVAILABLE

See page 65 for monogram options.

POCKET INCLUDED

See page 65 for embroidery options.

FULLY ADJUSTABLE

Velcro strap wraps across back. Shoulder pads provide additional comfort.

STRETCH BACK

Shrug shoulders to highest point, attach Velcro straps and release shoulders. By doing so, the apron weight is transferred from the shoulders to the waist area, reducing stress on the neck and back.

The stretch back option offers additional back support.



VARI-FLEX

When you need an apron with greater back support and weight distribution capabilities, the Vari-Flex provides the comfort and ease of wear in one design. Two fully adjustable Velcro straps with elastic in the rear flaps cross over the back, wrap snugly around the hips and attach to the front waist area. Velcro shoulder straps keep the apron from slipping off the shoulders. Shoulder pads offer extra cushioning.

0.50MM PROTECTION

- 55300 PRESTIGE (Lightest Weight — Lead Free)
- 45300 STARLITE (Lightweight — Lead Free)
- 65300 TRUELITE (Lightweight — Contains Lead)
- 60030 COST CRUNCHER (Traditional Weight — Contains Lead)

0.35MM PROTECTION

- 75300 PRESTIGE (Lightest Weight — Lead Free)
- 85300 STARLITE (Lightweight — Lead Free)
- 35300 TRUELITE (Lightweight — Contains Lead)
- 30030 COST CRUNCHER (Traditional Weight — Contains Lead)

60099 Upcharge Aprons Larger Than Sizes Found on Chart

Shown in Fun and Fashion Print #698



Shown in Fun and Fashion Print #606

PERSONALIZATION AVAILABLE

See page 65 for monogram options.

POCKET INCLUDED

See page 65 for embroidery options.

ADDED COMFORT

Velcro strap wraps across back. Shoulder pads provide additional comfort.

6" WIDE WEB BELT

This wide belt option offers back support for short-term or long-term procedures.



WIDE BELT

Longer procedures can take a toll on your back. The fully adjustable, 6-inch-wide, elastic back saver web belt, with a buckle closure, offers front torso, lower body protection and back support where you need it. Shrug your shoulders and adjust the belt to obtain a comfortable fit. To reduce slippage during long procedures, Velcro shoulder straps secure the apron across the upper back. Shoulder pads provide added comfort.

0.50MM PROTECTION

- 56400 PRESTIGE (Lightest Weight — Lead Free)
- 46400 STARLITE (Lightweight — Lead Free)
- 66400 TRUELITE (Lightweight — Contains Lead)
- 61420 COST CRUNCHER (Traditional Weight — Contains Lead)

0.35MM PROTECTION

- 76400 PRESTIGE (Lightest Weight — Lead Free)
- 86400 STARLITE (Lightweight — Lead Free)
- 36400 TRUELITE (Lightweight — Contains Lead)
- 31420 COST CRUNCHER (Traditional Weight — Contains Lead)
- 67892 Replacement wide belt, specify size: S-M-L

60099 Upcharge Aprons Larger Than Sizes Found on Chart

STANDARD

PERSONALIZATION AVAILABLE

See page 65 for monogram options.

POCKET INCLUDED

See page 65 for embroidery options.

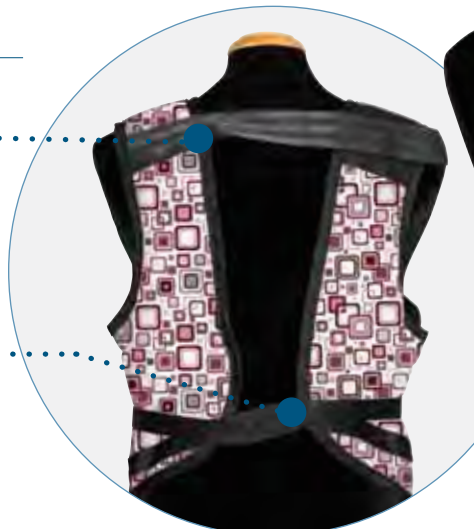
ADDED COMFORT

Velcro strap wraps across back.

Shoulder pads provide additional comfort.

1" STRAPS

Straps cross the waist and tie in the front, providing a snug fit.



STANDARD

This classic Standard apron features durable, 1-inch-wide straps that tie at the waist for a comfortable, secure fit. Sturdy Velcro straps secure the apron on the shoulders, preventing slippage during procedures. Shoulder pads give comfort and reduce fatigue in the shoulder region.

0.50MM PROTECTION

- 57405 PRESTIGE (Lightest Weight — Lead Free)
- 47405 STARLITE (Lightweight — Lead Free)
- 67405 TRUELITE (Lightweight — Contains Lead)
- 60948 COST CRUNCHER (Traditional Weight — Contains Lead)

0.35MM PROTECTION

- 77405 PRESTIGE (Lightest Weight — Lead Free)
- 87405 STARLITE (Lightweight — Lead Free)
- 37405 TRUELITE (Lightweight — Contains Lead)
- 30948 COST CRUNCHER (Traditional Weight — Contains Lead)

60099 Upcharge Aprons Larger Than Sizes Found on Chart

Shown in Fun and Fashion Print #621



Shown in Fun and Fashion Print #710

PERSONALIZATION AVAILABLE

• See page 65 for monogram options.

POCKET INCLUDED

• See page 65 for embroidery options.

ADDED COMFORT

• Velcro strap wraps across back.
Shoulder pads provide additional comfort.

2" WIDE WEB BELT

• Web belt provides adjustment with Velcro or buckle closure.



DELUXE

The Deluxe provides comfort during long procedures and features an easy on-off design. The fully adjustable, 2-inch-wide web belt, available in your choice of Velcro or buckle closure, offers front torso and lower body protection. Shrug your shoulders and adjust the belt to obtain a comfortable fit. A Velcro shoulder strap eliminates slippage from the shoulder region, while shoulder pads provide added comfort.

0.50MM PROTECTION

- 57400 PRESTIGE (Lightest Weight — Lead Free)
- 47400 STARLITE (Lightweight — Lead Free)
- 67400 TRUELITE (Lightweight — Contains Lead)
- 60947 COST CRUNCHER (Traditional Weight — Contains Lead)

0.35MM PROTECTION

- 77400 PRESTIGE (Lightest Weight — Lead Free)
- 87400 STARLITE (Lightweight — Lead Free)
- 37400 TRUELITE (Lightweight — Contains Lead)
- 30947 COST CRUNCHER (Traditional Weight — Contains Lead)

60099 Upcharge Aprons Larger Than Sizes Found on Chart

PERSONALIZATION AVAILABLE

See page 65 for monogram options.

ADDED COMFORT

Velcro strap wraps across back.
Shoulder pads provide additional comfort.

1" STRAPS

Straps cross the waist and tie in the front, providing a snug fit.



ECONOMY

Affording the same level of protection as our Standard, the Economy makes an economical option for radiology settings. Sturdy 1-inch-wide straps tie at the waist for a secure fit. A Velcro shoulder strap keeps the apron in place on the shoulders and prevents slippage during procedures. Cushioned shoulder pads offer comfort and reduce fatigue of the shoulders.

0.50MM PROTECTION

- 56949 PRESTIGE (Lightest Weight — Lead Free)
- 46949 STARLITE (Lightweight — Lead Free)
- 66949 TRUELITE (Lightweight — Contains Lead)
- 60949 COST CRUNCHER (Traditional Weight — Contains Lead)

0.35MM PROTECTION

- 76949 PRESTIGE (Lightest Weight — Lead Free)
- 86949 STARLITE (Lightweight — Lead Free)
- 36949 TRUELITE (Lightweight — Contains Lead)
- 30949 COST CRUNCHER (Traditional Weight — Contains Lead)

60099 Upcharge Aprons Larger Than Sizes Found on Chart

Shown in Fun and Fashion Print #613



Shown in Fun and Fashion Print #530

PERSONALIZATION AVAILABLE

• See page 65 for monogram options.

POCKET INCLUDED

• See page 65 for embroidery options.

ADDED COMFORT

• Velcro tab shoulders offer quick drop-off. Shoulder pads provide additional comfort.

STRETCH BACK

• Shrug shoulders to highest point, attach Velcro straps and release shoulders. By doing so, the apron weight is transferred from the shoulders to the waist area, reducing stress on the neck and back.

The stretch back option offers additional back support. Velcro shoulder tabs offer quick drop-off in the OR.

O.R. FLEX

Ideal for use in surgical settings, Velcro tabs on the O.R. Flex permit quick removal without compromising the sterile environment of the O.R. To release the apron, an assistant unhooks the Velcro tabs at the shoulders, enabling the apron to drop to the floor. Incorporating the stretch back design of the Vari-Flex, the apron weight of the O.R. Flex is transferred from shoulders to waist, minimizing fatigue in the back and neck areas. Shoulder pads provide comfort during use.

0.50MM PROTECTION

- 55345 PRESTIGE (Lightest Weight — Lead Free)
- 45345 STARLITE (Lightweight — Lead Free)
- 65345 TRUELITE (Lightweight — Contains Lead)
- 60684 COST CRUNCHER (Traditional Weight — Contains Lead)

0.35MM PROTECTION

- 75345 PRESTIGE (Lightest Weight — Lead Free)
- 85345 STARLITE (Lightweight — Lead Free)
- 35345 TRUELITE (Lightweight — Contains Lead)
- 30684 COST CRUNCHER (Traditional Weight — Contains Lead)

60099 Upcharge Aprons Larger Than Sizes Found on Chart

SURGICAL DROP-OFF

PERSONALIZATION AVAILABLE

See page 65 for monogram options.

POCKET INCLUDED

See page 65 for embroidery options.

ADDED COMFORT

Shoulder pads offer additional comfort.

QUICK RELEASE

Velcro straps cross the back and secure to the front of the apron. This is designed to release quickly under the surgical gown without compromising the sterile field.



SURGICAL DROP-OFF

Designed specifically for use in the O.R., the Surgical Drop-Off can be easily removed from underneath surgical gowns without compromising the sterile environment. The apron is held in place with two straps that overlap the back and attach securely to the front waist and hip region of the apron with Velcro tabs. To remove the apron, simply release the Velcro straps at the waist and allow the apron to slide off the body. Shoulder pads provide comfort during use.

0.50MM PROTECTION

- 55319 PRESTIGE (Lightest Weight — Lead Free)
- 45319 STARLITE (Lightweight — Lead Free)
- 65319 TRUELITE (Lightweight — Contains Lead)
- 60022 COST CRUNCHER (Traditional Weight — Contains Lead)

0.35MM PROTECTION

- 75319 PRESTIGE (Lightest Weight — Lead Free)
- 85319 STARLITE (Lightweight — Lead Free)
- 35319 TRUELITE (Lightweight — Contains Lead)
- 30022 COST CRUNCHER (Traditional Weight — Contains Lead)

60099 Upcharge Aprons Larger Than Sizes Found on Chart

Shown in Fun and Fashion Print #848



Shown in Fun and Fashion Print #522

PERSONALIZATION AVAILABLE

• See page 65 for monogram options.

POCKET INCLUDED

• See page 65 for embroidery options.

ADDED COMFORT

• Velcro strap wraps across back.
Shoulder pads provide additional comfort.

PADDED INSERTS

• Belt provides comfort offered by two padded back support inserts.



ECONOMY STRETCH BELT

Especially suited to individuals with shorter torsos, the Economy Stretch Belt was designed with comfort and custom fitting in mind. The 2-inch-wide, back saver web buckle belt is fully adjustable. Padded elastic inserts in the belt ease lower back strain. Velcro shoulder straps keep the garment in place during use, while shoulder pads provide cushioning support.

0.50MM PROTECTION

- 57650 PRESTIGE (Lightest Weight — Lead Free)
- 47650 STARLITE (Lightweight — Lead Free)
- 67650 TRUELITE (Lightweight — Contains Lead)
- 60015 COST CRUNCHER (Traditional Weight — Contains Lead)

0.35MM PROTECTION

- 77650 PRESTIGE (Lightest Weight — Lead Free)
- 87650 STARLITE (Lightweight — Lead Free)
- 37650 TRUELITE (Lightweight — Contains Lead)
- 30015 COST CRUNCHER (Traditional Weight — Contains Lead)

60099 Upcharge Aprons Larger Than Sizes Found on Chart

COMFORT WRAP

PERSONALIZATION AVAILABLE

See page 65 for monogram options.

POCKET INCLUDED

See page 65 for embroidery options.

ADDED COMFORT

Shoulder pads offer additional comfort.

WIDE BELT

This wide belt option offers back support for short-term or long-term procedures.



COMFORT WRAP

For complete protection against scatter radiation, the Comfort Wrap makes an ideal choice for individuals who prefer a comfortable, solid one-piece design. Unlike Velcro closures on a standard wrap around that can snag clothes and are difficult to align, the Comfort Wrap contains only a minimal amount of Velcro required to keep the apron securely in place during use. Shoulder pads are included.

Additional features of the Comfort Wrap include:

- A full frontal overlap and over-the-shoulder closure system
- An inside buckle to prevent the inner panel from sagging
- Wide belt attachment that, when adjusted correctly, evenly transfers the weight from shoulders to hips

0.25MM EACH FRONT FLAP (0.50MM AT OVERLAP REGION), 0.25MM AT BACK

- 56565 PRESTIGE (Lightest Weight — Lead Free)
- 46565 STARLITE (Lightweight — Lead Free)
- 66565 TRUELITE (Lightweight — Contains Lead)
- 60565 COST CRUNCHER (Traditional Weight — Contains Lead)

0.20MM EACH FRONT FLAP (0.40MM AT OVERLAP REGION), 0.20MM AT BACK

- 76565 PRESTIGE (Lightest Weight — Lead Free)
- 86565 STARLITE (Lightweight — Lead Free)
- 36565 TRUELITE (Lightweight — Contains Lead)
- 30565 COST CRUNCHER (Traditional Weight — Contains Lead)

67892 Replacement wide belt, specify size: S-M-L

60099 Upcharge Aprons Larger Than Sizes Found on Chart



Shown in Fun and Fashion Print #697

PERSONALIZATION AVAILABLE

• See page 65 for monogram options.

POCKET INCLUDED

• See page 65 for embroidery options.

ADDED COMFORT

• Shoulder pads offer additional comfort.

6" WIDE WEB BELT

• This wide belt option offers back support for short-term or long-term procedures.



WIDE BELT WRAP AROUND

Still the most popular full-length wrap around in use, the full-length Wide Belt protects against scatter radiation. When properly adjusted, the 6-inch-wide, elastic, back saver belt transfers the weight of the wrap around from shoulders to hips, offering comfort during use. A front Velcro closure provides a secure fit. Chest and hip pockets and shoulder pads are included.

0.50MM FRONT, 0.25MM EACH FRONT FLAP (0.50MM AT OVERLAP REGION)

- 56590 PRESTIGE (Lightest Weight — Lead Free)
- 46590 STARLITE (Lightweight — Lead Free)
- 66590 TRUELITE (Lightweight — Contains Lead)
- 60590 COST CRUNCHER (Traditional Weight — Contains Lead)

0.40MM FRONT, 0.20MM EACH FRONT FLAP (0.40MM AT OVERLAP REGION)

- 76590 PRESTIGE (Lightest Weight — Lead Free)
- 86590 STARLITE (Lightweight — Lead Free)
- 36590 TRUELITE (Lightweight — Contains Lead)
- 30590 COST CRUNCHER (Traditional Weight — Contains Lead)

67892 Replacement wide belt, specify size: S-M-L

60099 Upcharge Aprons Larger Than Sizes Found on Chart

Shown in Fun and Fashion Print #809

DIAMOND BACK

PERSONALIZATION AVAILABLE

See page 65 for monogram options.

POCKET INCLUDED

See page 65 for embroidery options.

ADDED COMFORT

Shoulder pads offer additional comfort.

6" WIDE WEB BELT

This is a very popular style among men.



DIAMOND BACK

Here's a wrap around that can accommodate a wider range of body figures and sizes. Unlike a traditional wrap around, the Diamond Back closes from the back. A 6-inch-wide nylon web belt pulls through the side, fastens in the front of the garment and can be adjusted from person to person.

0.50MM FRONT, 0.25MM EACH REAR FLAP (0.50MM AT OVERLAP REGION)

- 56254 PRESTIGE (Lightest Weight — Lead Free)
- 46254 STARLITE (Lightweight — Lead Free)
- 66254 TRUELITE (Lightweight — Contains Lead)
- 64572 COST CRUNCHER (Traditional Weight — Contains Lead)

0.40MM FRONT, 0.20MM EACH REAR FLAP (0.40MM AT OVERLAP REGION)

- 76254 PRESTIGE (Lightest Weight — Lead Free)
- 86549 STARLITE (Lightweight — Lead Free)
- 36254 TRUELITE (Lightweight — Contains Lead)
- 34572 COST CRUNCHER (Traditional Weight — Contains Lead)

67892 Optional wide belt, specify size: S-M-L

60099 Upcharge Aprons Larger Than Sizes Found on Chart

Shown in Fun and Fashion Print #746



Shown in Fun and Fashion Print #632

PERSONALIZATION AVAILABLE

• See page 65 for monogram options.

POCKET INCLUDED

• See page 65 for embroidery options.

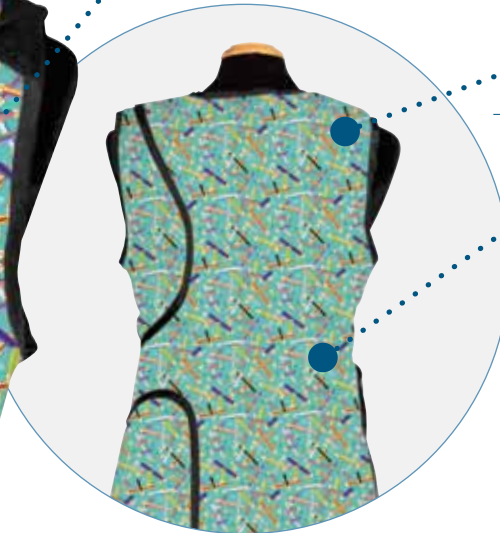
ADDED COMFORT

• Shoulder pads offer additional comfort.

STRETCH BACK

• Shrug shoulders to highest point, attach Velcro straps and release shoulders. By doing so, the apron weight is transferred from the shoulders to the waist area, reducing stress on the neck and back.

The stretch back option offers additional back support. This is a very popular maternity apron option.



STRETCH BACK REVERSE WRAP

We took the stretch back feature of our Vari-Flex apron and coupled it with the adjustability offered by our Reverse Vest to create this comfortable version of the wrap around apron. The stretch back efficiently transfers weight from shoulders to the waist area while still offering full protection. With the elastic back design, there's no difficulty adjusting this wrap around to fit a variety of body sizes, making it doubly useful in the maternity setting. Shoulder pads provide additional comfort.

PLUS, THERE IS NO BELT TO LOSE WITH THIS MODEL!

0.50MM FRONT, 0.25MM EACH REAR FLAP (0.50MM AT OVERLAP REGION)

56582	PRESTIGE (Lightest Weight — Lead Free)
46582	STARLITE (Lightweight — Lead Free)
66582	TRUELITE (Lightweight — Contains Lead)
60582	COST CRUNCHER (Traditional Weight — Contains Lead)

0.40MM FRONT, 0.20MM EACH REAR FLAP (0.40MM AT OVERLAP REGION)

76582	PRESTIGE (Lightest Weight — Lead Free)
86582	STARLITE (Lightweight — Lead Free)
36582	TRUELITE (Lightweight — Contains Lead)
30582	COST CRUNCHER (Traditional Weight — Contains Lead)

60099 Upcharge Aprons Larger Than Sizes Found on Chart

0.50MM PROTECTION

Skirt — 0.25mm each front flap (0.50mm at overlap), 0.25mm back

0.40MM PROTECTION

Skirt — 0.20mm each front flap (0.40mm at overlap), 0.20mm back

60099 Upcharge Skirts Larger Than Sizes
Found on Chart

Mix and match any vest with any skirt to
CREATE YOUR OWN SET!

Vests located on pages 18-19

STANDARD SKIRT

Our Standard Skirt provides protection to the lower body region. Nonslip material attached to the interior waistline of the garment prevents the skirt from shifting and sliding during use. A 2-inch buckle closure on the exterior front waist area secures the garment in place on the body. This skirt is available with 0.50mm and 0.40mm protection in a single unisex form (see below).

0.50MM	PRESTIGE	STARLITE	TRUELITE	COST CRUNCHER
UNISEX	S54862	S44862	S64862	S60862
0.40MM	PRESTIGE	STARLITE	TRUELITE	COST CRUNCHER
UNISEX	S74862	S84862	S34862	S30862

STANDARD SKIRT WITH SUSPENDERS

Durable suspenders attached to the skirt extend upward from the waist, over the shoulders and crisscross the back to keep the skirt in place during use. A 2-inch buckle closure at the waist area keeps the skirt secure on the body during procedures. This skirt is available with 0.50mm and 0.40mm protection in a single unisex form (see below).

0.50MM	PRESTIGE	STARLITE	TRUELITE	COST CRUNCHER
UNISEX	S57537	S47537	S67537	S60537
0.40MM	PRESTIGE	STARLITE	TRUELITE	COST CRUNCHER
UNISEX	S77537	S87537	S37537	S30537



Shown in Fun and Fashion
Print #863



Shown in Fun and Fashion
Print #553

**For an accurate fit, provide us
with your measurements.**

0.50MM PROTECTION

Vest — 0.25mm each front flap (0.50mm at overlap), 0.25mm back
 Reverse Vest — 0.50mm front, 0.25mm each rear flap (0.50mm at overlap)

0.40MM PROTECTION

Vest — 0.20mm each front flap (0.40mm at overlap), 0.20mm back
 Reverse Vest — 0.40mm front, 0.20mm each rear flap (0.40mm at overlap)

Our vests are available for both masculine and feminine forms.

60099 Upcharge Vests Larger Than Sizes Found on Chart

REVERSE VEST

Here’s a vest that evenly transfers its weight from the shoulders to the waist area. Similar to our Vari-Flex apron, the Reverse Vest attaches to the body with Velcro shoulder and waist straps; shrug your shoulders prior to attaching for a custom fit. Shoulder pads offer additional comfort.

0.50MM	PRESTIGE	STARLITE	TRUELITE	COST CRUNCHER
MALE	V56650R	V46650R	V66650R	V60650R
FEMALE	V56605R	V46605R	V66605R	V60605R
0.40MM	PRESTIGE	STARLITE	TRUELITE	COST CRUNCHER
MALE	V76650R	V86650R	V36650R	V30650R
FEMALE	V76605R	V86605R	V36605R	V30605R



Shown in Fun and Fashion Print #771

For an accurate fit, provide us with your measurements.

WIDE BELT VEST

An adjustable 6-inch-wide elastic belt aids in transferring the weight of this vest from the shoulders to the waist area. Simply shrug your shoulders and adjust the belt for a comfortable, secure fit. Shoulder pads give comfort and support to the shoulders.

0.50MM	PRESTIGE	STARLITE	TRUELITE	COST CRUNCHER
MALE	V54974	V44974	V64974	V60974
FEMALE	V54265	V44265	V64265	V60265
0.40MM	PRESTIGE	STARLITE	TRUELITE	COST CRUNCHER
MALE	V74974	V84974	V34974	V30974
FEMALE	V74265	V84265	V34265	V30265



Shown in Fun and Fashion Print #707

0.50MM PROTECTION

Vest — 0.25mm each front flap (0.50mm at overlap), 0.25mm back
 Reverse Vest — 0.50mm front, 0.25mm each rear flap (0.50mm at overlap)

0.40MM PROTECTION

Vest — 0.20mm each front flap (0.40mm at overlap), 0.20mm back
 Reverse Vest — 0.40mm front, 0.20mm each rear flap (0.40mm at overlap)

Our vests are available for both masculine and feminine forms.

60099 Upcharge Vests Larger Than Sizes Found on Chart

STANDARD VEST: VELCRO CLOSURE

Offering superior protection to the upper torso, the Standard Vest secures in place over the chest with a Velcro closure. An inner buckle prevents the inner vest panel from sagging during use. Shoulder pads in the vest provide comfort during wear.

0.50MM	PRESTIGE	STARLITE	TRUELITE	COST CRUNCHER
MALE	V56650	V46650	V66650	V60650
FEMALE	V56605	V46605	V66605	V60605
0.40MM	PRESTIGE	STARLITE	TRUELITE	COST CRUNCHER
MALE	V76650	V86650	V36650	V30650
FEMALE	V76605	V86605	V36605	V30605



Shown in Fun and Fashion Print #767

For an accurate fit, provide us with your measurements.

STANDARD VEST: BUCKLE CLOSURE

Similar to our Standard Vest: Velcro Closure, this vest secures in place over the chest with buckles at both the top shoulder and lower torso region. The buckles prevent the outer vest panel from sagging during use. Shoulder pads in the vest offer comfort and support.

0.50MM	PRESTIGE	STARLITE	TRUELITE	COST CRUNCHER
MALE	V51234	V41324	V61234	V60234
FEMALE	V54321	V44321	V64321	V60321
0.40MM	PRESTIGE	STARLITE	TRUELITE	COST CRUNCHER
MALE	V71234	V81234	V31234	V30234
FEMALE	V74321	V84321	V34321	V30321



Shown in Fun and Fashion Print #574

**Mix and match any vest with any skirt to
 CREATE YOUR OWN SET!**

Skirts located on page 17

COOL PACK INSERT *EXCLUSIVELY* from Bar-Ray_____

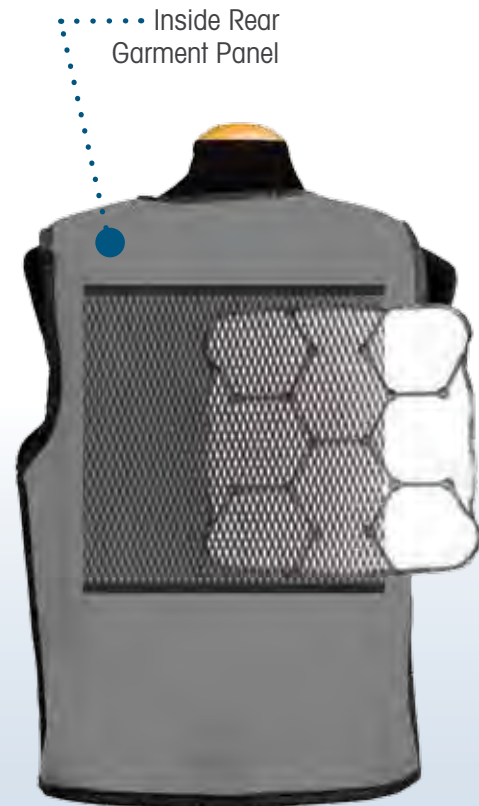
Lengthy medical or diagnostic procedures demand cooling comfort for technicians and medical specialists alike. The Cool Pack Insert uses specially designed cooling cells to provide up to three hours of temperature-regulated, cool comfort that won't leave you feeling ice cold.* The compact design fits easily into a mesh pocket that can be attached to an inside panel of a protective garment.

When fully charged, the cells appear opaque white and provide a constant cool temperature. After 100 percent of the cooling charge is depleted, the cells become completely clear. Recharging the Cool Pack Insert is simple: Place the Cool Pack Insert in a refrigerator and, within 1 hour of refrigeration, the product is ready for reuse. The smooth, hypoallergenic, latex-free surface cleans easily using standard disinfectants and is safe for direct contact with the skin.



PRODUCT #	DETAILS	DIMENSIONS	WEIGHT
67913	Cool Pack Insert – Set of 2	11 1/2"L x 11 1/2"W	4 lb. set
62894	Additional Cool Pack – Single	11 1/2"L x 11 1/2"W	2 lbs. each

* Three hours is the typical cooling duration for this product when used in a medical treatment or diagnostic environment. Actual cooling times will differ depending on body mass, level of exertion, body metabolism and environmental air temperature and humidity.

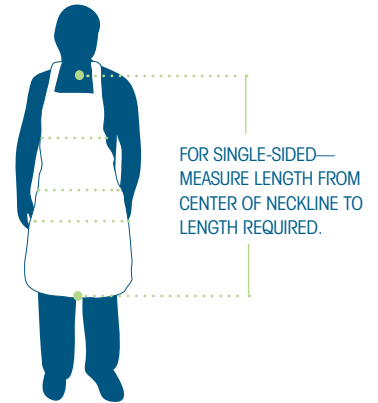


SIZING CHARTS

If you do not find your size in these charts, we are glad to assist you with custom sizing.

FRONT PROTECTION APRON SIZING CHART UNISEX

FRONTAL Apron Size	ACTUAL Apron Size	Fits Dress Size	Fits Suit Size	Max Chest/Hip Measurement	Fits Max Height
small	20" x 32"	4 - 6	34 - 36	36"	5' 6"
medium	22" x 34"	8 - 10	38 - 40	40"	5' 10"
large	24" x 36"	12 - 14	42 - 44	44"	6' 0"
x-large	26" x 38"	16 - 18	46 - 48	48"	6' 2"
2X	28" x 40"	20 - 22	50 - 52	52"	6' 4"



VEST SIZING CHART MALE

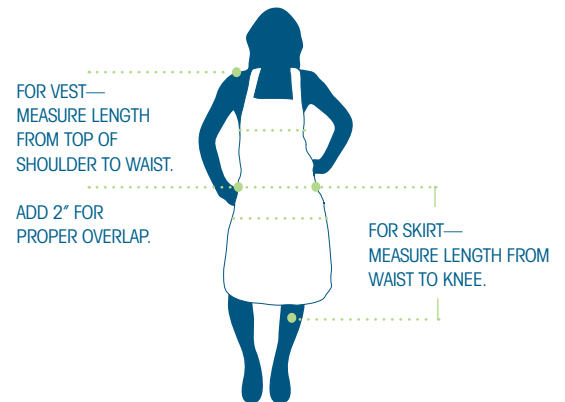
Size Name	Chest Size	Length
x-small	35" - 36"	23 1/2"
small	37" - 38"	24 1/2"
medium	39" - 40"	25"
large	41" - 42"	25 1/2"
x-large	43" - 44"	26"
2X	45" - 46"	26 1/2"
3X	47" - 48"	27"

VEST SIZING CHART FEMALE

Size Name	Chest Size	Length
x-small	33" - 34"	21"
small	35" - 36"	21 1/2"
medium	37" - 38"	22"
large	39" - 40"	22 1/2"
x-large	41" - 42"	23"
2X	43" - 44"	23 1/2"
3X	45" - 46"	24"

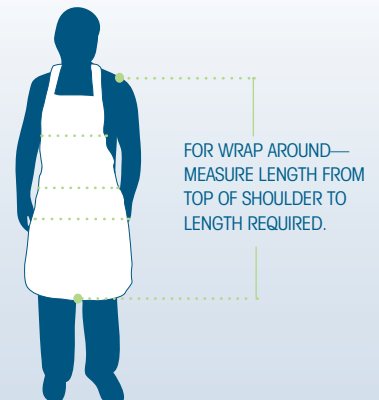
SKIRT SIZING CHART UNISEX

Size Name	Waist Size	Hip Size	Length
x-small	26" - 27"	33" - 34"	19"
small	28" - 29"	35" - 36"	19"
medium	30" - 31"	37" - 38"	20"
M2	32" - 33"	39" - 40"	20"
large	34" - 35"	41" - 42"	21"
L2	36" - 37"	43" - 44"	21"
x-large	38" - 39"	45" - 46"	22"
2X	40" - 41"	47" - 48"	22"
3X	42" - 43"	49" - 50"	23"



WRAP AROUND SIZING CHART UNISEX

Wrap Size	Chest Size	Waist Size	Hip Size	Front Length	Rear Length
small 18" Wide	33" - 36"	34" - 37"	35" - 38"	36"	32"
medium 20" Wide	37" - 40"	38" - 41"	39" - 42"	38"	34"
large 22" Wide	41" - 44"	42" - 45"	43" - 46"	40"	36"
x-large 24" Wide	45" - 48"	46" - 49"	47" - 50"	42"	38"



YOUR OWN LOGO

Bar-Ray now has the ability to offer you customized products like no one else.

- Never before could you proudly display your logo—on one apron, the entire department or all aprons throughout the hospital. Adding the department name near the logo helps to ensure the apron stays in the proper department. A logo helps prevent aprons from “walking out of the hospital” when personnel leave. Order minimum is ONE apron or item, with no commitment beyond that minimum number.
- By providing us with your logo and written permission to use your logo, we are able to print it onto the fabric, giving you the most personalized product on the market.
- You can choose to have the logo fabric on the front, the back or both of the apron or item.
- To ensure your complete satisfaction before the fabric is printed, we will send you an image to approve. Do you prefer to see an actual sample of the fabric with your logo? No problem, we can provide one for you.
- Personalize aprons, blankets, mobile shields or other similar items.

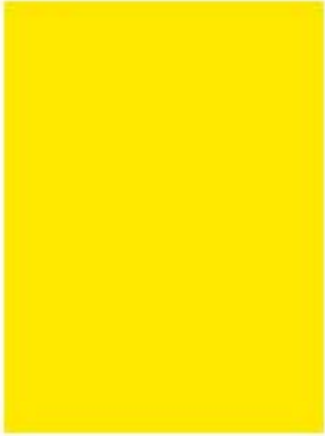
PRODUCT #	DETAILS
69988	Digitize Your Logo (a one-time fee per logo)
69993	Pick Your Own Design (per product)





All aprons, regardless of style, are available in any fabric.

nylon fabric



#1



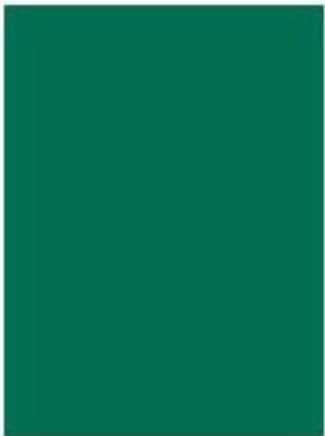
#3



#5



#6



#9



#10



#13



#19



#21



#22



#23



#30

Visit www.bar-ray.com to view hundreds of fabric designs available

Images have been enlarged for viewing clarity.

FABRIC SWATCHES

All aprons, regardless of style, are available in any fabric.

nylon fabric (continued)



#32



#34



#35



#40



#41



#42



#43



#44



#46



#47



#48



#49

Visit www.bar-ray.com to view hundreds of fabric designs available

Images have been enlarged for viewing clarity.

All aprons, regardless of style, are available in any fabric.

diamond prints

FUN AND FASHION 63495



#300



#301



#302



#303



#304



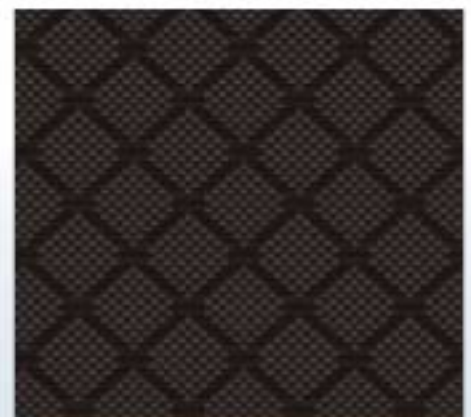
#305



#306



#307



#308

Visit www.bar-ray.com to view hundreds of fabric designs available

Images have been enlarged for viewing clarity.

All aprons, regardless of style, are available in any fabric.

diamond prints (continued)

FUN AND FASHION 63495



#309



#310



#311



#312



#313



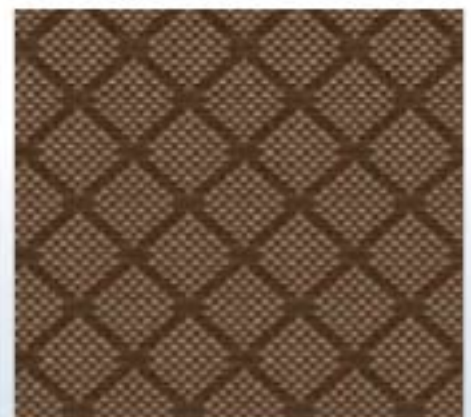
#314



#315



#316



#317

Visit www.bar-ray.com to view hundreds of fabric designs available

Images have been enlarged for viewing clarity.

All aprons, regardless of style, are available in any fabric.

baby it's cold outside

FUN AND FASHION 63495



#529



#553



#630



#647



#648



#649



#650



#717



#733

Visit www.bar-ray.com to view hundreds of fabric designs available

Images have been enlarged for viewing clarity.

All aprons, regardless of style, are available in any fabric.

skulls

FUN AND FASHION 63495



#530



#540



#541



#721



#804



#805



#806



#807



#816



#817



#818



#819

Visit www.bar-ray.com to view hundreds of fabric designs available

Images have been enlarged for viewing clarity.

All aprons, regardless of style, are available in any fabric.

animal prints

FUN AND FASHION 63495



#504



#505



#546



#547



#548



#671



#674



#693



#694

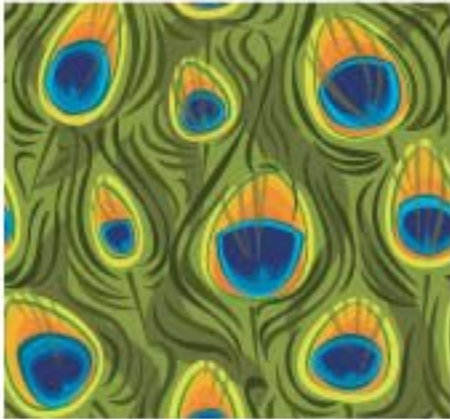
Visit www.bar-ray.com to view hundreds of fabric designs available

Images have been enlarged for viewing clarity.

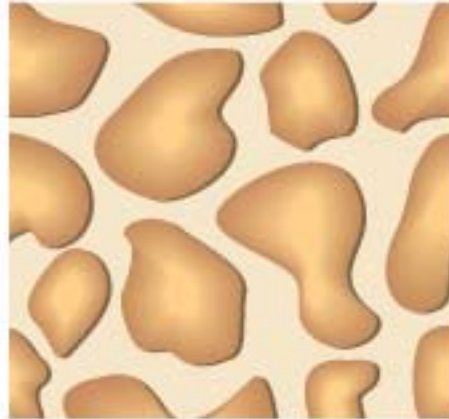
All aprons, regardless of style, are available in any fabric.

animal prints (continued)

FUN AND FASHION 63495



#713



#714



#770



#771



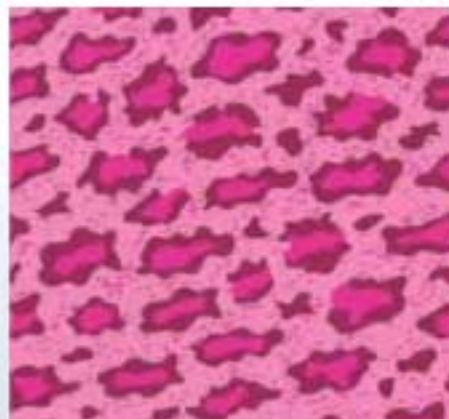
#772



#773



#774



#775



#851

Visit www.bar-ray.com to view hundreds of fabric designs available

Images have been enlarged for viewing clarity.

All aprons, regardless of style, are available in any fabric.

quilt blocks

FUN AND FASHION 63495



#500



#516



#517



#543



#607



#688



#725



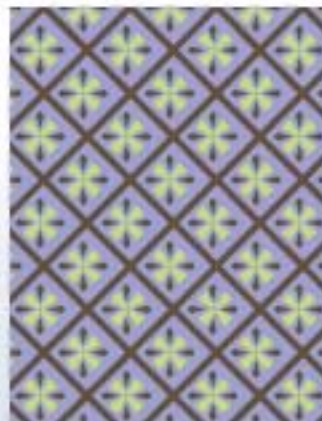
#726



#727



#729



#768



#769

Visit www.bar-ray.com to view hundreds of fabric designs available

Images have been enlarged for viewing clarity.

FABRIC SWATCHES

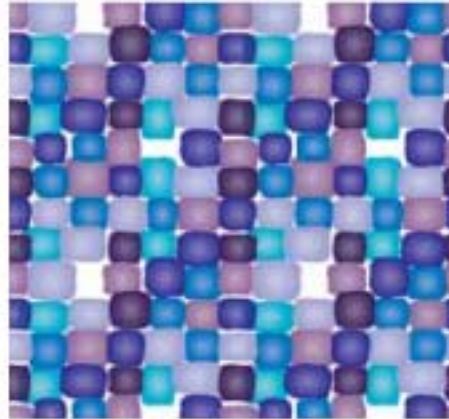
All aprons, regardless of style, are available in any fabric.

texture

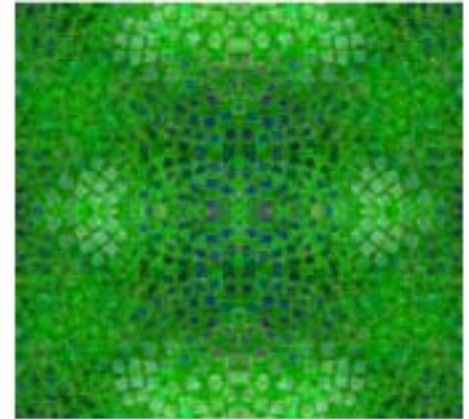
FUN AND FASHION 63495



#20 Antimicrobial



#507



#522



#531



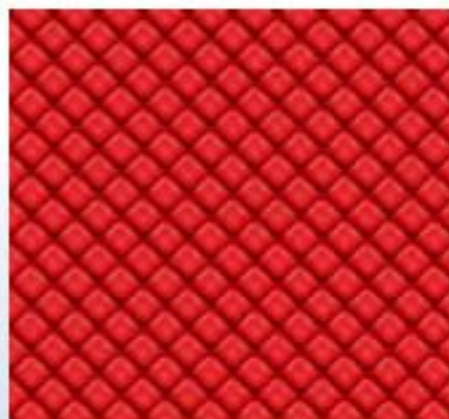
#534



#554



#563



#591



#597

Visit www.bar-ray.com to view hundreds of fabric designs available

Images have been enlarged for viewing clarity.

All aprons, regardless of style, are available in any fabric.

texture (continued)

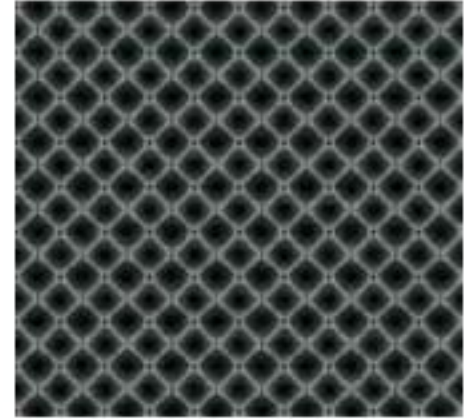
FUN AND FASHION 63495



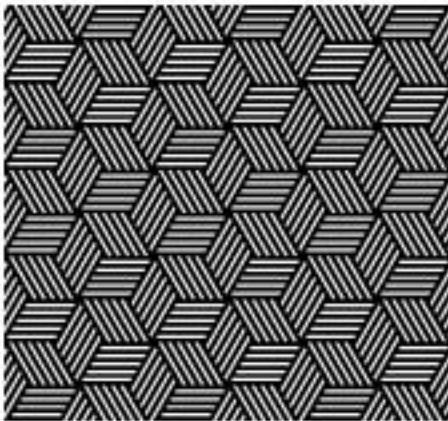
#623



#695



#702



#730



#731



#740



#741



#766



#767

Visit www.bar-ray.com to view hundreds of fabric designs available

Images have been enlarged for viewing clarity.

FABRIC SWATCHES

All aprons, regardless of style, are available in any fabric.

dot's dot

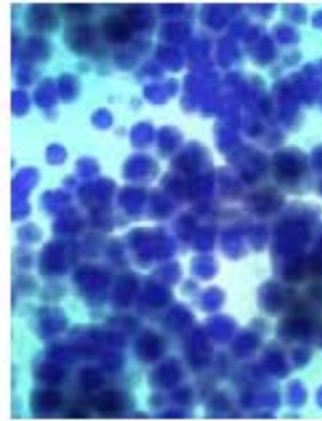
FUN AND FASHION 63495



#545



#556



#615



#619



#622



#699



#732



#734



#742



#743



#744



#812

Visit www.bar-ray.com to view hundreds of fabric designs available

Images have been enlarged for viewing clarity.

All aprons, regardless of style, are available in any fabric.

dot's dot (continued)

FUN AND FASHION 63495



#813



#814



#815



#833



#834



#835



#836



#837



#838

Visit www.bar-ray.com to view hundreds of fabric designs available

Images have been enlarged for viewing clarity.

All aprons, regardless of style, are available in any fabric.

plaids

FUN AND FASHION 63495



#544



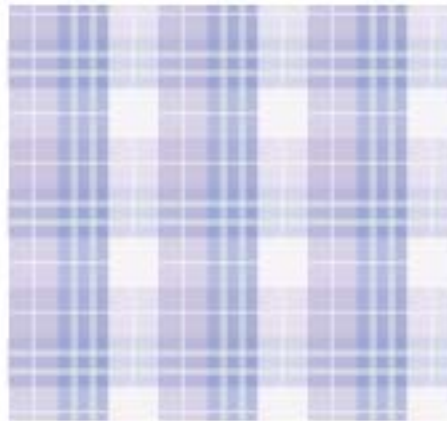
#558



#559



#560



#570



#608



#609



#610



#611

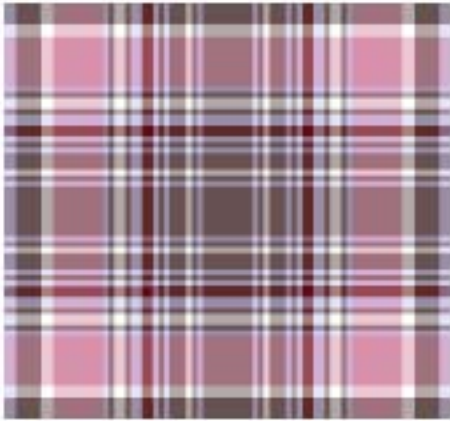
Visit www.bar-ray.com to view hundreds of fabric designs available

Images have been enlarged for viewing clarity.

All aprons, regardless of style, are available in any fabric.

plaids (continued)

FUN AND FASHION 63495



#620



#621



#708



#716



#735



#745



#820



#821



#822

Visit www.bar-ray.com to view hundreds of fabric designs available

Images have been enlarged for viewing clarity.

All aprons, regardless of style, are available in any fabric.

plaids (continued)

FUN AND FASHION 63495



#823



#824



#826



#827



#828



#829



#830



#831



#832

Visit www.bar-ray.com to view hundreds of fabric designs available

Images have been enlarged for viewing clarity.

All aprons, regardless of style, are available in any fabric.

tropical

FUN AND FASHION 63495



#542



#574



#582



#588



#605



#614



#638



#703



#747

Visit www.bar-ray.com to view hundreds of fabric designs available

Images have been enlarged for viewing clarity.

FABRIC SWATCHES

All aprons, regardless of style, are available in any fabric.

petcetera

FUN AND FASHION 63495



#512



#519



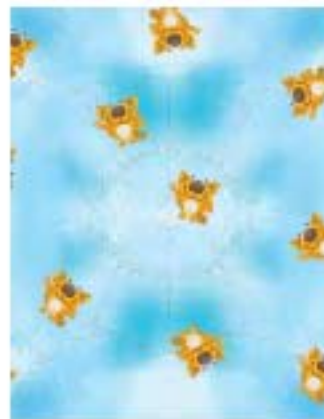
#524



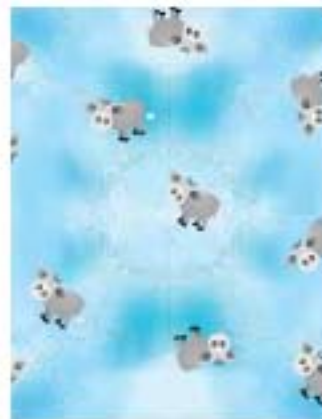
#532



#535



#536



#537



#538



#549



#557



#561



#566

Visit www.bar-ray.com to view hundreds of fabric designs available

Images have been enlarged for viewing clarity.

All aprons, regardless of style, are available in any fabric.

petcetera (continued)

FUN AND FASHION 63495



#567



#568



#572



#581



#587



#599



#606



#618



#637



#643



#644



#645

Visit www.bar-ray.com to view hundreds of fabric designs available

Images have been enlarged for viewing clarity.

FABRIC SWATCHES

All aprons, regardless of style, are available in any fabric.

petcetera (continued)

FUN AND FASHION 63495



#646



#655



#664



#665



#676



#684



#709



#765



#776



#777



#778



#779

Visit www.bar-ray.com to view hundreds of fabric designs available

Images have been enlarged for viewing clarity.

All aprons, regardless of style, are available in any fabric.

petcetera (continued)

FUN AND FASHION 63495



#780



#781



#782



#783



#784



#785



#786



#787



#792



#793



#794



#842

Visit www.bar-ray.com to view hundreds of fabric designs available

Images have been enlarged for viewing clarity.

FABRIC SWATCHES

All aprons, regardless of style, are available in any fabric.

psychedelic

FUN AND FASHION 63495



#501



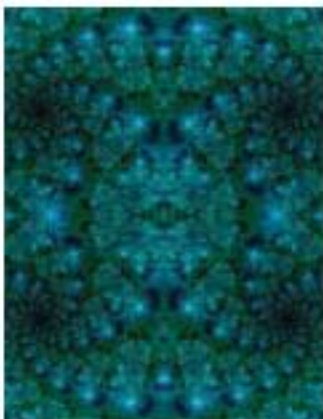
#514



#518



#523



#550



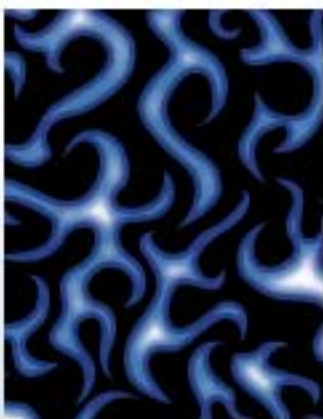
#552



#555



#569



#579



#580



#592



#613

Visit www.bar-ray.com to view hundreds of fabric designs available

Images have been enlarged for viewing clarity.

All aprons, regardless of style, are available in any fabric.

psychedelic (continued)

FUN AND FASHION 63495



#629



#640



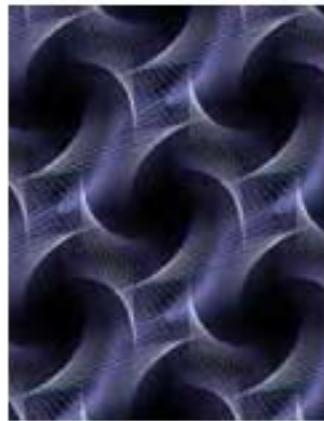
#675



#687



#696



#706



#728



#843

java jive



#698



#700



#738

Visit www.bar-ray.com to view hundreds of fabric designs available

Images have been enlarged for viewing clarity.

FABRIC SWATCHES

All aprons, regardless of style, are available in any fabric.

camo

FUN AND FASHION 63495



#526



#527



#528



#533



#748



#749



#788



#789



#790



#791



#850



#854

Visit www.bar-ray.com to view hundreds of fabric designs available

Images have been enlarged for viewing clarity.

All aprons, regardless of style, are available in any fabric.

bug out

FUN AND FASHION 63495



#562



#616



#651



#652



#653



#654



#697



#722



#750

Visit www.bar-ray.com to view hundreds of fabric designs available

Images have been enlarged for viewing clarity.

FABRIC SWATCHES

All aprons, regardless of style, are available in any fabric.

kid prints

FUN AND FASHION 63495



#525



#575



#576



#577



#578



#624



#625



#626



#627



#631



#632



#633

Visit www.bar-ray.com to view hundreds of fabric designs available

Images have been enlarged for viewing clarity.

All aprons, regardless of style, are available in any fabric.

kid prints (continued)

FUN AND FASHION 63495



#634



#635



#639



#669



#670



#685



#686



#690



#711



#720



#751



#858

Visit www.bar-ray.com to view hundreds of fabric designs available

Images have been enlarged for viewing clarity.

All aprons, regardless of style, are available in any fabric.

ports of call

FUN AND FASHION 63495



#510



#520



#571



#604



#628



#677



#710



#712



#718

Visit www.bar-ray.com to view hundreds of fabric designs available

Images have been enlarged for viewing clarity.

All aprons, regardless of style, are available in any fabric.

ports of call (continued)

FUN AND FASHION 63495



#736



#737



#800



#801



#802

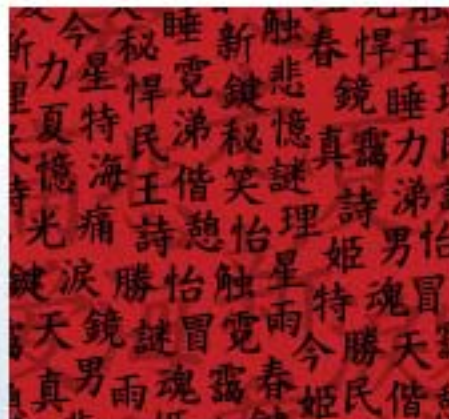


#803

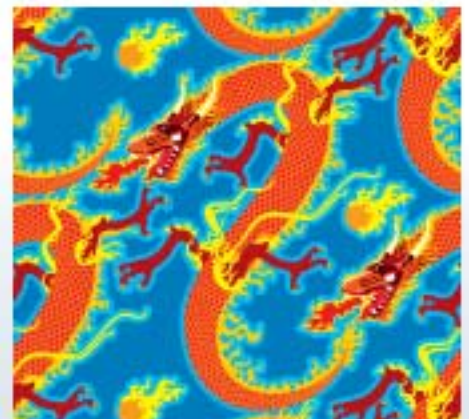
asian



#515



#636



#707

Visit www.bar-ray.com to view hundreds of fabric designs available

Images have been enlarged for viewing clarity.

All aprons, regardless of style, are available in any fabric.

hearts a lot

FUN AND FASHION 63495



#521



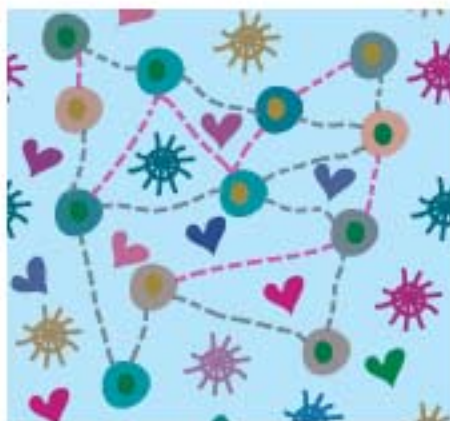
#539



#583



#584



#585



#586



#600



#601



#602

Visit www.bar-ray.com to view hundreds of fabric designs available

Images have been enlarged for viewing clarity.

All aprons, regardless of style, are available in any fabric.

hearts a lot (continued)

FUN AND FASHION 63495



#603



#667



#668



#701



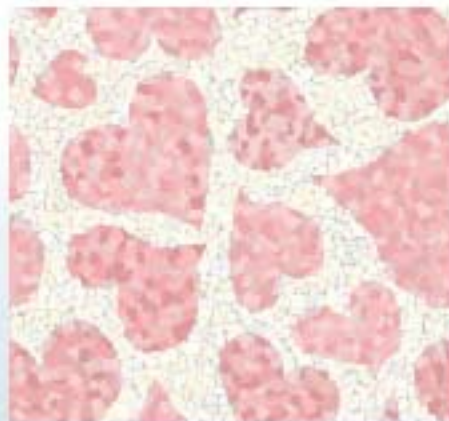
#715



#746



#752



#753



#754

Visit www.bar-ray.com to view hundreds of fabric designs available

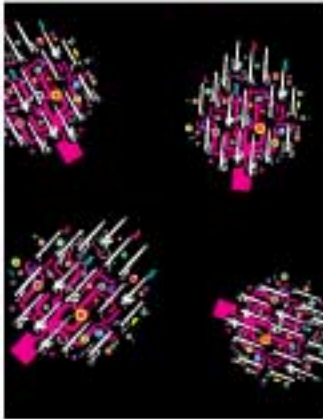
Images have been enlarged for viewing clarity.

FABRIC SWATCHES

All aprons, regardless of style, are available in any fabric.

sports/games

FUN AND FASHION 63495



#551



#564



#589



#590



#598



#642



#678



#719



#739



#755



#756



#757

Visit www.bar-ray.com to view hundreds of fabric designs available

Images have been enlarged for viewing clarity.

All aprons, regardless of style, are available in any fabric.

sports/games (continued)

FUN AND FASHION 63495



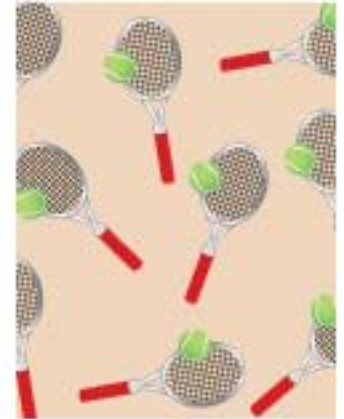
#758



#759



#760



#761



#762



#763



#764



#795



#796



#797



#798



#799

Visit www.bar-ray.com to view hundreds of fabric designs available

Images have been enlarged for viewing clarity.

All aprons, regardless of style, are available in any fabric.

sports/games (continued)

FUN AND FASHION 63495



#845



#846



#847



#848



#849



#855



#593



#594

a girl's best friend



#595



#596



#612



#841

Visit www.bar-ray.com to view hundreds of fabric designs available

Images have been enlarged for viewing clarity.

All aprons, regardless of style, are available in any fabric.

floral

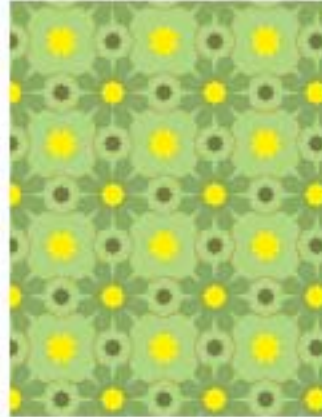
FUN AND FASHION 63495



#503



#509



#513



#573



#617



#660



#661



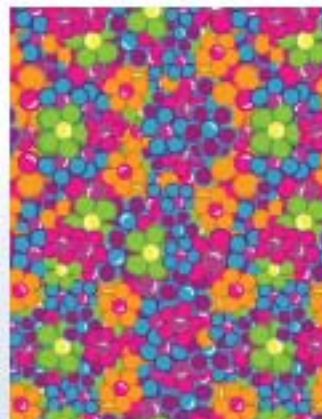
#662



#663



#683



#689



#704

Visit www.bar-ray.com to view hundreds of fabric designs available

Images have been enlarged for viewing clarity.

FABRIC SWATCHES

All aprons, regardless of style, are available in any fabric.

floral (continued)

FUN AND FASHION 63495



#723



#724



#808



#809



#810



#811



#839



#840



#844



#852



#856



#857

Visit www.bar-ray.com to view hundreds of fabric designs available

Images have been enlarged for viewing clarity.

All aprons, regardless of style, are available in any fabric.

ribbon awareness

FUN AND FASHION 63495



#860 Breast Cancer



#861 Cancer



#862 Autism



#863 Ovarian Cancer



#864 Gay/Lesbian Pride



#865 Liver Cancer



#866 Leukemia



#867 Prostate Cancer



#868 Childhood Cancer

Visit www.bar-ray.com to view hundreds of fabric designs available

Images have been enlarged for viewing clarity.

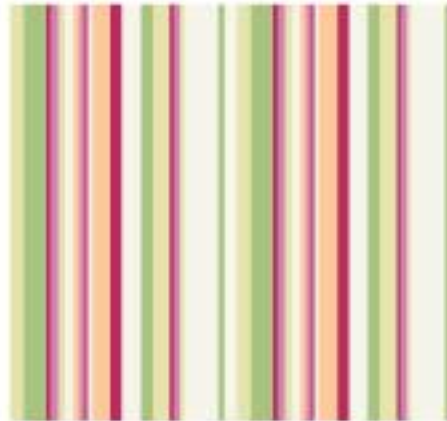
All aprons, regardless of style, are available in any fabric.

stars/stripes

FUN AND FASHION 63495



#502



#506



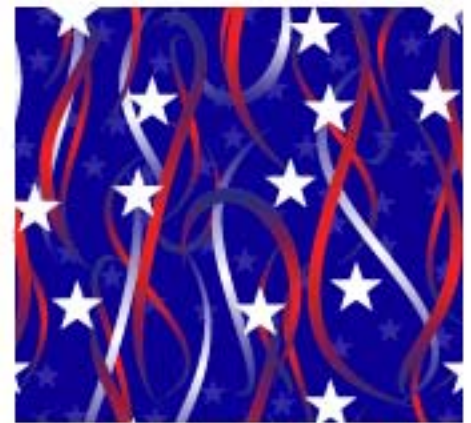
#508



#511



#656



#657



#658



#659



#672

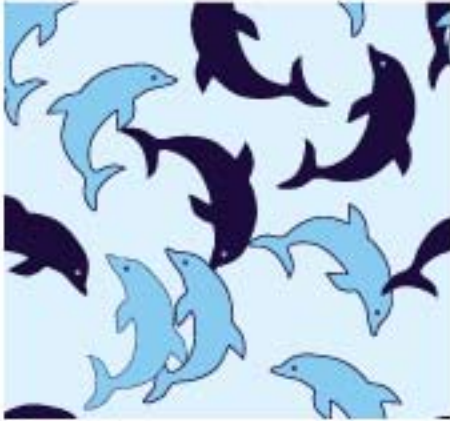
Visit www.bar-ray.com to view hundreds of fabric designs available

Images have been enlarged for viewing clarity.

All aprons, regardless of style, are available in any fabric.

ocean life

FUN AND FASHION 63495



#565



#673



#679



#680



#681



#682



#691



#692



#705

Visit www.bar-ray.com to view hundreds of fabric designs available

Images have been enlarged for viewing clarity.



Bone and Joint



Bowling



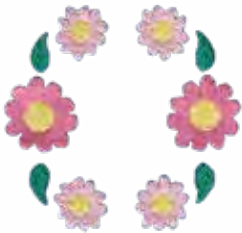
Chain of Hearts



Crab



Daisy



Flower Chain



Frog



Heart Vine



Heart with Bolt



Hearts



Helmet



Kidney



Kitty



Ladybug



Lighthouse



Lungs



Neuro



Neurology



Radiology



Rainbow



Shamrock



Skull and Bones



Soccer Ball



Star



Tropical Fish

Looking for something else? Pick your own embroidery design. Go to either or both of these websites: www.greatnotions.com or www.dakotacollectibles.com. Order using our item number 69991, and give us the number of your chosen design.

NOTE: Due to copyright laws, we are unable to reproduce trademarked designs; however, if you provide us with a patch of your favorite team or design, we will be happy to sew it on your apron.



Doctor



Nurse



Caduceus



RN Logo



Chinese Health



Dancing Skeleton



Broken Bones



Spine



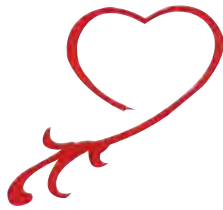
X-Ray Bear



X-Ray



Doctor Smiley



Heart Scroll



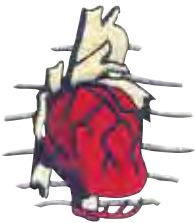
Heart with EKG



Heart with Band-Aid



Bear with Heart



Cardiology



Patriotic Heart



Heartbeat



Vet Logo #1



Deer



Eagle



Fish



Hummingbird



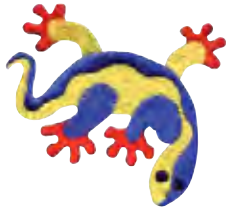
Small Animal Vet



Dragon



Whale Tail



Gecko



American Eagle



Turtle



Hibiscus



Kidney Awareness Ribbon



Leukemia Awareness Ribbon



Prostate Awareness Ribbon



Flag Ribbon



Support Our Troops Ribbon



Gay/Lesbian Pride Ribbon



AIDS/MADD Awareness Ribbon



Autism Awareness Ribbon



Pancreatic or Thyroid Cancer Awareness Ribbon



Breast Cancer Awareness Ribbon



Ovarian, Cervical or Uterine Cancer Awareness Ribbon



Air Force



Army



Coast Guard



Marines



National Guard



Navy

MONOGRAMS, EMBROIDERIES & OTHER OPTIONS

Monograms are available for your initials, name, institution, etc. Please specify **Block**, **ALL CAPS** or *Script*.

- 69988 Digitizing Fee
- 69991 Embroidery design
- 69992 Provide your own patch to be sewn on
- 63495 Fun and Fashion upcharge
- 69996 Velcro® name tags
- 69999 Monograms, name or department
- 60099 Upcharge aprons, vests, skirts and wraps larger than sizes found on chart

Examples:

Gerald Paccione, M.D. Block

DORIS PACCIONE, M.D. ALL CAPS

Radiology Department Script

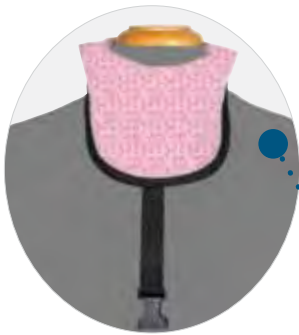
THYROID COLLAR

0.50mm lead equivalent protection. AVAILABLE IN ALL FABRIC COLORS.



VELCRO CLOSURE

PRESTIGE	STARLITE	TRUELITE	COST CRUNCHER	DETAILS
56821	46821	66821	60821	No top binding
56997	46997	66997	69997	No top binding tethered
56020	47241	67241	64592	No binding
56021	47242	67245	69592	No binding tethered



BUCKLE CLOSURE

PRESTIGE	STARLITE	TRUELITE	COST CRUNCHER	DETAILS
57821	41821	67821	61821	No top binding
57995	49995	67995	69995	No top binding tethered
56022	47248	67246	64598	No binding
56025	47249	67249	64599	No binding tethered



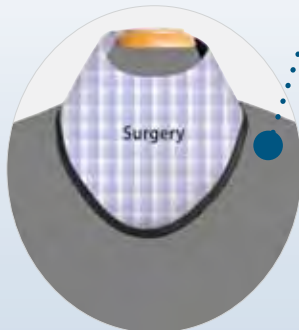
BIB COLLAR Collar Cover not available.

PRESTIGE	STARLITE	TRUELITE	COST CRUNCHER	DETAILS
57694	47694	67694	67912	Regular - Velcro Closure
59746	49746	60694	67012	Tethered - Velcro Closure
58469	41789	65478	65896	Regular - Buckle Closure
54795	47315	62384	69245	Tethered - Buckle Closure



LARGE COLLAR Collar Cover not available.

PRESTIGE	STARLITE	TRUELITE	COST CRUNCHER	DETAILS
54978	44132	63247	60132	Regular - Velcro Closure
52968	47895	67951	68245	Tethered - Velcro Closure
57913	47982	68374	64795	Regular - Buckle Closure
56794	45498	64978	63841	Tethered - Buckle Closure



COLLAR COVERS NOT SHOWN. Not available for Bib Collar. NO COLOR CHOICE.

PRODUCT #	DETAILS
69986	Collar cover regular (purchase with collar)
69985	Collar cover tethered (purchase separately)
69981	Collar cover regular (purchase separately)
69980	Collar cover tethered (purchase with collar)

PAGE CAP

The Page Cap offers protection for your head against radiation scatter. A Velcro closure allows for a snug fit without fear of the cap sliding off the head.

For an accurate fit, please specify the circumference of your head just above the eyebrows. 0.50mm lead equivalent.

AVAILABLE IN ALL FABRIC COLORS.

PRODUCT #	DETAILS
48512	STARLITE (Lightweight — Lead Free)
67512	COST CRUNCHER (Traditional Weight — Contains Lead)



SLEEVES

Sleeves offer protection for the humerus bone against radiation scatter.

Specify left or right, length of sleeve, Velcro/snap or sewn-on attachment.

0.50mm lead equivalent. AVAILABLE IN ALL FABRIC COLORS.

PRODUCT #	DETAILS
49317	STARLITE (Lightweight — Lead Free)
67931	COST CRUNCHER (Traditional Weight — Contains Lead)



SHIN GUARDS

Shin Guards offer protection for the tibia bone against radiation scatter. For an accurate fit, please specify desired length and circumference of the calf.

Available in all apron colors. 0.50mm lead equivalent. AVAILABLE IN ALL FABRIC COLORS.

PRODUCT #	DETAILS
48528	STARLITE (Lightweight — Lead Free)
65828	COST CRUNCHER (Traditional Weight — Contains Lead)



PREGNANCY PANEL



Larger than a patient apron, the Pregnancy Panel is designed with the growing fetus in mind. The Panel can be worn under any apron, alleviating the need to buy separate pieces for frontal or wrap around aprons. 0.50mm lead equivalent. 20 1/2"W x 16"L. **AVAILABLE IN ALL FABRIC COLORS.**

PRODUCT #	DETAILS
49090	STARLITE (Lightweight — Lead Free)
61090	COST CRUNCHER (Traditional Weight — Contains Lead)

DENTAL APRON



This Dental Apron has a permanently sewn-on thyroid collar. 23" W x 27"L. 0.30mm protection. **AVAILABLE IN ALL FABRIC COLORS.**

PRODUCT #	DETAILS
40082	STARLITE (Lightweight — Lead Free)
60071	COST CRUNCHER (Traditional Weight — Contains Lead)

REPLACEMENT WIDE BELT

This Replacement Wide Belt is used for the Wide Belt, Comfort Wrap and Wide Belt Wrap Around aprons.

PRODUCT #	DETAILS
67892	Specify Small (30" - 38"), Medium (38" - 46") or Large (46" - 56")



SUPER BELT

The Super Belt has numerous features, including a felt lining for comfort and a tear-resistant nylon exterior. A "pulley" system cinches the belt for a secure fit. **NO COLOR CHOICE.**

PRODUCT #	SIZE	FITS WAIST SIZE
60122	small	25" - 30"
60148	medium	30" - 35"
60137	large	35" - 40"
60155	x-large	40" - 45"
60170	xx-large	45" - 50"





PATIENT APRON

This half apron contains an easy on/off Velcro closure that fastens securely. 0.50mm protection. **AVAILABLE IN ALL FABRIC COLORS.**

LENGTH	WIDTH	PRESTIGE	STARLITE	TRUELITE	COST CRUNCHER
12"	24"	56928	46928	66928	60928
18"	24"	56929	46929	66929	60929
24"	24"	56924	46924	66924	60924

DEMI APRONS & RACK

These aprons feature a flexible vinyl covered spring steel belt with no ties or Velcro to adjust. Available individually or as a set of four with or without the rack. 0.50mm lead equivalent. **AVAILABLE IN ALL FABRIC COLORS.**



SIZE	LENGTH	WIDTH	PRESTIGE	STARLITE	TRUELITE	COST CRUNCHER
small	10"	8 1/2"	56036	46036	66036	60036
medium	12"	12"	56037	46037	66037	60037
large	14"	16"	56038	46038	66038	60038
x-large	16"	20"	56039	46039	66039	60039
set of 4 with rack			56067	46067	66067	60067
set of 4 without rack			56068	46068	66068	60068
rack only (12 lbs.)			60066	60066	60066	60066

- FOR VELCRO CLOSURE, ADD **V** AFTER PRODUCT NUMBER
- FOR BUCKLE CLOSURE, ADD **B** AFTER PRODUCT NUMBER



DEMI APRON SET WITH VELCRO CLOSURE

Also available in a set of three, each set has one each of small (10" x 8 1/2"), large (14" x 16") and x-large (16" x 20"). All have a Velcro closure. 0.50mm lead equivalent. **AVAILABLE IN ALL FABRIC COLORS.**

PRODUCT #	DETAILS
56046	PRESTIGE (Lightest Weight — Lead Free)
46046	STARLITE (Lightweight — Lead Free)
66046	TRUELITE (Lightweight — Contains Lead)
61046	COST CRUNCHER (Traditional Weight — Contains Lead)

SCOLIOSIS STOLE

Panels provide breast and lung protection without compromising spinal image quality. 0.50mm lead equivalent. Measurements are 14" x 31 1/4".

AVAILABLE IN ALL FABRIC COLORS.

PRODUCT #	DETAILS
46930	STARLITE (Lightweight — Lead Free)
60930	COST CRUNCHER (Traditional Weight — Contains Lead)



ADULT BREAST SHIELDS

These are an alternative to the scoliosis stole. The Velcro neck strap allows for various placement of the shields. Four sizes of shields are in each set. Sizes include: two 6 3/4" x 8", two 7 3/4" x 10", two 9 3/4" x 12" and two 11 1/2" x 14". 0.50mm lead equivalent. AVAILABLE IN ALL FABRIC COLORS.

PRODUCT #	DETAILS
48321	STARLITE (Lightweight — Lead Free)
63321	COST CRUNCHER (Traditional Weight — Contains Lead)



TRIANGULAR GONAD SHIELD

This 9" triangular style comes with ties. 0.50mm lead equivalent.

AVAILABLE IN ALL FABRIC COLORS.

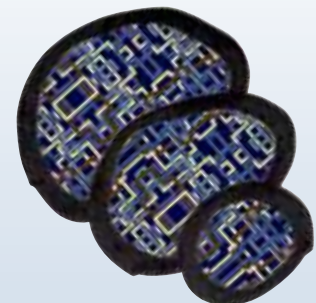
PRODUCT #	DETAILS
46923	STARLITE (Lightweight — Lead Free)
63923	COST CRUNCHER (Traditional Weight — Contains Lead)



OVAL GONAD SHIELD SET

This three-piece set offers 0.50mm lead equivalent protection with a Velcro hook-and-loop belt for attachment. Wall hanger is included. The Velcro strip wall hanger attaches to the wall by hook, nail or screw. Gonad shields attach to hanger by Velcro. Sizes include: small 4 1/2" x 5 1/2", medium 6 3/4" x 8" and large 7 3/4" x 10". AVAILABLE IN ALL FABRIC COLORS.

PRODUCT #	DETAILS
46950	STARLITE (Lightweight — Lead Free)
65950	COST CRUNCHER (Traditional Weight — Contains Lead)





PEDIATRIC BREAST SHIELDS

Perfect for pediatric spinal exams, these shields are a smaller alternative to the Scoliosis Stole that may be too large for children. The Velcro neck strap allows for various placement of the shields. Three sizes of shields are in each set. Sizes include: two 4 1/2" x 5 1/2", two 6 3/4" x 8" and two 7 3/4" x 10". 0.50mm lead equivalent. **AVAILABLE ONLY AS SHOWN.**

PRODUCT #	DETAILS
46970	Lead Free Lightweight



PEDIATRIC DIAPERS

0.50mm lead equivalent. One set of six diapers includes sizes 1-6. Size 1=8-14 lb.; Size 2=12-18 lb.; Size 3=16-28 lb.; Size 4=22-37 lb.; Size 5=27 lb.+; Size 6=35 lb.+ **AVAILABLE ONLY AS SHOWN.**

PRODUCT #	DETAILS
42851	Lead Free Lightweight



PEDIATRIC GONAD SHIELDS

0.50mm lead equivalent. One set of four includes sizes small (3 1/2" x 2 3/4"), medium (4 1/2" x 3 1/2"), large (5 1/2" x 4 1/2") and extra large (6 1/2" x 5 1/2"). **AVAILABLE ONLY AS SHOWN.**

PRODUCT #	DETAILS
49745	Lead Free Lightweight



PEDIATRIC THYROID COLLAR

0.50mm lead equivalent. One set of three includes sizes small (6 1/2" x 3"), medium (7 1/2" x 3 1/2") and large (8 1/2" x 4"). **AVAILABLE ONLY AS SHOWN.**

PRODUCT #	DETAILS
43645	Lead Free Lightweight

PEDIATRIC MITTENS

These mittens offer full wrap around protection while positioning pediatric patients. They feature a Velcro wrist strap and a soft nonslip material on the palm. 0.50mm lead equivalent. **AVAILABLE ONLY AS SHOWN.**

PRODUCT #	DETAILS
46458	Lead Free Lightweight



PEDIATRIC FRONTAL APRON

Based on the adult Standard apron, this apron is sized for pediatric use and contains a tie closure. 0.50mm protection. **AVAILABLE ONLY AS SHOWN.**

PRODUCT #	DETAILS	SIZE	MEASUREMENTS
45895	Lead Free Lightweight	Small (sizes 1-3)	12" x 24"
41785	Lead Free Lightweight	Medium (sizes 4-6)	14" x 26"
43971	Lead Free Lightweight	Large (sizes 7-10)	16" x 28"
41714	Set of 3	All of the above	All of the above



PEDIATRIC WRAP AROUND APRON

Based on the adult Wide Belt Wrap Around apron, this apron is sized for pediatric use. 0.50mm protection. **AVAILABLE ONLY AS SHOWN.**

PRODUCT #	DETAILS	SIZE	MEASUREMENTS (front length/rear length)
48521	Lead Free Lightweight	Small (sizes 1-3)	10" x 27"/25"
46791	Lead Free Lightweight	Medium (sizes 4-6)	12" x 29"/27"
42167	Lead Free Lightweight	Large (sizes 7-10)	14" x 31"/29"
43693	Set of 3	All of the above	All of the above



GLOVES

The one piece molded design contains a soft urethane exterior. Covers remove easily to inspect the protective qualities of the leaded core. All models feature a breathable nylon liner for comfort. Blue vinyl. 0.50mm protection. Latex free.



PRODUCT #	SIZE	DETAILS	WEIGHT
69303	15"	Pair	6 lbs.
69304	15"	Left Only	3 lbs.
69305	15"	Right Only	3 lbs.

MOLDED GLOVES

Seamless lead vinyl gloves are available in three sizes, all 15" in length. These gloves have no liner or cover, but they are an economical choice. Since they are completely washable, they can be rinsed inside and out. 0.50mm lead equivalent. Latex free.



PRODUCT #	SIZE	DETAILS	WEIGHT
69360	Large	Size 9	6 lbs.
69359	Medium	Size 8	6 lbs.
69358	Small	Size 7	6 lbs.

RADIATION ATTENUATING GLOVES

These gloves offer the best protection with the greatest dexterity, sensitivity and comfort. Ideal for all high exposure procedures, they may be sterilized with ethylene oxide or Sterrad® up to three times before disposal. This product contains natural rubber latex. Sizes 6-9 including half sizes (no 9 1/2).

PRODUCT #	DETAILS	PRODUCT #	DETAILS
67100	0.300mm thickness - 1 pair (specify size)	62134	0.300mm thickness - box/5 pair (specify size)
67346	0.220mm thickness - 1 pair (specify size)	69874	0.220mm thickness - box/5 pair (specify size)
61796	0.600mm thickness - 1 pair (specify size) (sizes 6 and 6 1/2 are not available for #61796)	65412	0.600mm thickness - box/5 pair (specify size)

ECONOMY RADIATION ATTENUATING GLOVES

PRODUCT #	DETAILS	PRODUCT #	DETAILS
68547	0.300mm thickness - 1 pair (specify size)	63214	0.300mm thickness - box/5 pair (specify size)
67945	0.220mm thickness - 1 pair (specify size)	61248	0.220mm thickness - box/5 pair (specify size)

Features

- Thin fingertips provide enhanced tactile sensitivity.
- Soft powder-free finish creates a smooth interior which reduces skin irritation.
- Anatomically correct curved fingers reduce hand fatigue.
- Attenuates up to 30% more direct beam radiation than other leading products.
- Available in 0.300mm (0.012") and 0.220mm (0.0088") fingertip thickness.
- Measure 12" in length.

ATTENUATION — RADIATION REDUCTION %

60 kVp	80 kVp	100 kVp	120 kVp	Thickness
43%	35%	26%	23%	0.088" - 0.220mm
55%	43%	35%	31%	0.012" - 0.300mm
81%	69%	62%	59%	0.024" - 0.600mm



ATTENUATING SLEEVES

When used in conjunction with the Attenuating Gloves, these sleeves create a radiation protection barrier from fingers to biceps. Available in small, medium and large. This product contains natural rubber latex. Sold as a pair.

PRODUCT #	DETAILS
63359	0.30mm thickness (specify size)

ECONOMY ATTENUATING SLEEVES

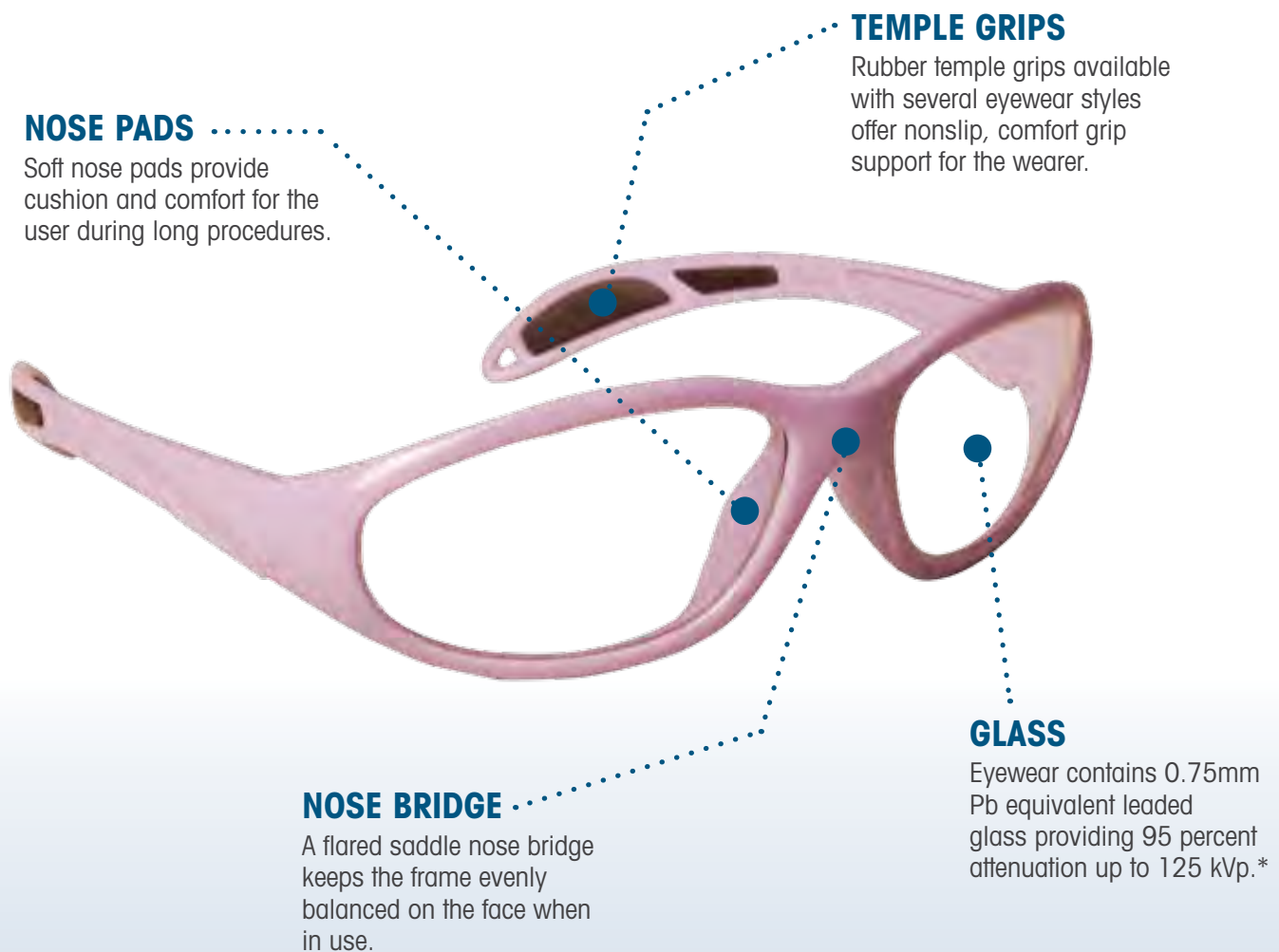
PRODUCT #	DETAILS
65821	0.30mm thickness (specify size)



FROM the Cath and EP labs to interventional radiology and orthopedic surgery, Bar-Ray's protective eyewear has been designed for these clinical settings with coverage, comfort and style in mind.* Eyewear features include head straps, prescription upgrades, side shield protection and chemical resistance. Protective eyewear is used by approximately 95 percent of the staff in Cath and EP labs.

All prescription protective eyewear require a "PD," pupillary distance, measurement. This measurement is necessary in order to correctly grind the prescription into the lenses. An order cannot be processed without this measurement.

Unless otherwise noted, eyewear contains 0.75mm Pb equivalent leaded glass that provides 95 percent attenuation up to 125 kVp.



* The NCRP (National Council on Radiation Protection) has established maximal permissible doses of radiation for individuals who receive occupational exposure. The NRC (Nuclear Regulatory Commission) suggests that occupational exposure be **as low as reasonably achievable**.

PROTECTIVE EYEWEAR



WRAP AROUND

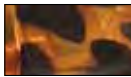
The sturdy nylon frame construction offers maximum wearing comfort yet minimizes the risk of potential breakage. A full saddle bridge evenly distributes weight over the nose. Leaded glass side shields protect the sides of the eyes without obscuring peripheral vision.

PRODUCT #	DETAILS	WEIGHT
69650	Available in all Rx	84g.

AVAILABLE IN THESE TWO COLORS:



Black



Tortoise



Shown in Tortoise

Recommended for face shapes:



OVAL



HEART

ASTRO-FLEX

Here's a pair of panoramic goggles that combines flexibility and impact resistance in a single frame design. Leaded side shields provide necessary protection from oblique angle exposure. The frame front fits snugly on the brow for added frontal protection. To ensure a comfort, uniform fit, adjust the temple length and angle of the frames.

PRODUCT #	DETAILS	WEIGHT
67852	Available in all Rx	93g.



Recommended for face shapes:



OVAL



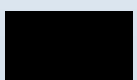
ROUND

FLAIR

Keep splashes and sweat out of the eyes with the Flair. With a unique head-hugging frame design, the Flair offers excellent eye protection during long procedures. The frame material is impact resistant and impervious to chemical contact.

PRODUCT #	DETAILS	WEIGHT
62587	Available in all Rx	115g.

AVAILABLE IN THESE TWO COLORS:



Black



Tortoise



Shown in Tortoise

Recommended for face shapes:



OVAL



ROUND



Shown in Brown

Recommended for face shapes:



OVAL



ROUND



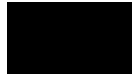
SQUARE

LATTICE

Looking for eyewear offering extra comfort along the nose bridge? With a flared saddle nose bridge shape, this Lattice frame is suitable for large facial structures. The durable molded nylon frame displays a lattice design on the temple areas.

PRODUCT #	DETAILS	WEIGHT
65879	Non-Rx Only	76g.

AVAILABLE IN THESE TWO COLORS:



Black



Brown



Shown in Silver

Recommended for face shapes:



OVAL



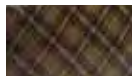
ROUND

PLAID

From the flared saddle nose bridge to the durable molded nylon frame construction, the Plaid provides optimum eye protection for medium to large facial structures. The frame features a pleasing plaid pattern, available in brown or silver plaid, on the temples.

PRODUCT #	DETAILS	WEIGHT
62314	Non-Rx Only	70g.

AVAILABLE IN THESE TWO COLORS:



Brown



Silver



Shown in White

Recommended for face shapes:



OVAL



ROUND



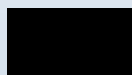
SQUARE

STAR

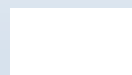
The sleek, streamlined frame design makes the Star an ideal fit for small to medium facial structures. Made from durable molded nylon, the frame contains a flared saddle nose bridge to provide an extra degree of comfort when in use. The head-hugging design keeps splashes and sweat out of the eyes during procedures.

PRODUCT #	DETAILS	WEIGHT
63998	Non-Rx Only	65g.

AVAILABLE IN THESE TWO COLORS:



Black



White

PROTECTIVE EYEWEAR



WILEY X AIRBORNE

Keep debris, dust and splashes from liquids out of the eyes with the Wiley X Airborne. Featuring a removable facial cavity seal on the frame, this eyewear is one of the most popular Wiley X frames, designed with comfort, durability and style in mind.

PRODUCT #	DETAILS	WEIGHT
61236	Non-Rx Only	69g.

AVAILABLE ONLY IN BLACK AS SHOWN



Shown in Black

Recommended for face shapes:



OVAL



SQUARE



HEART

WILEY X P-17

From the family of Wiley X frames, the highly popular P-17 puts superior eye protection into a comfort fit, lightweight wrap around lens style. Rubber nose and temple pads prevent slippage, while the generous curve of the nose bridge makes an ideal fit for small to medium facial structures.

PRODUCT #	DETAILS	WEIGHT
69696	Available in limited Rx	61g.

AVAILABLE IN THESE TWO COLORS:



Black



Tortoise



Shown in Tortoise

Recommended for face shapes:



OVAL



SQUARE



HEART

WILEY X ZAK

The wide wrap around lens style has made the Wiley X Zak a popular choice in protective eyewear year after year. The generous width affords eyewear users maximum coverage and unimpeded vision when in use.

PRODUCT #	DETAILS	WEIGHT
65552	Non-Rx Only	76g.

AVAILABLE ONLY IN BLACK AS SHOWN



Shown in Black

Recommended for face shapes:



OVAL



SQUARE



HEART



Shown in Brown

Recommended for face shapes:



OVAL



ROUND

ZEBRA

Uniquely suited to medium and large facial structures, the Zebra offers excellent eye protection without sacrificing comfort or style. The flared saddle nose bridge keeps the frame evenly balanced on the face during use. An attractive zebra pattern featured on the temples adds subtle flair to the durable molded nylon frame.

PRODUCT #	DETAILS	WEIGHT
65587	Non-Rx Only	75g.

AVAILABLE IN THESE TWO COLORS:



Black



Brown



Shown in Pink

Recommended for face shapes:



OVAL



SQUARE



HEART

NANOLITE

Sleek and stylish, the Nanolite brings modern innovation to protective eyewear. Flex hinges offer ease of adjustment; a head strap keeps the eyewear properly positioned on the face during use. Extended lenses, with an antireflective coating to reduce glare, enhance protection coverage by eliminating the need for side shields. The temples are wrapped in uni-soft flex material to provide extra comfort during use. **MORE SUITABLE FOR LARGER-FRAMED FACES.**

PRODUCT #	DETAILS	WEIGHT
64937	Available in limited Rx	70.5g.

AVAILABLE IN THESE 10 COLORS:



Aqua



Black



Blue



Fuchsia



Lavender



Light Blue



Pink



Red



Silver



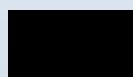
Taupe

WEB

This eyewear displays the decorator's touch without compromising protection or functionality. A stylized web pattern embellishes the temple areas. The highly durable, impact and chemical resistant frame stands up to the toughest conditions encountered in the radiological setting.

PRODUCT #	DETAILS	WEIGHT
67138	Available in limited Rx	115g.

AVAILABLE IN THESE TWO COLORS:



Black



Red



Shown in Red

Recommended for face shapes:



OVAL



HEART

PROTECTIVE EYEWEAR



ULTRA

Flex hinges and a convenient head strap make this wrap around Ultra suited to smaller-framed faces. With larger contoured lenses eliminating the need for side shields, Ultra does not sacrifice comfort for protection; ultrasoft flex temples ensure a comfortable fit. Nonprescription (plano) lenses feature an applied antireflective coating. **MORE SUITABLE FOR SMALLER-FRAMED FACES.**

PRODUCT #	DETAILS	WEIGHT
63864	Available in limited Rx	64g.

AVAILABLE IN THESE THREE COLORS:



Black

Red

Silver



Shown in Silver

Recommended for face shapes:



OVAL



SQUARE



HEART

ALUMA-LITE

Make as many adjustments as you need to the Aluma-Lite. An adjustable nose pad bridge and silicon nose strap coupled with spring hinge temples make this eyewear adaptable for use with a range of facial structures. Nonslip rubber temple grips keep the eyewear securely in place on the face during use. Antireflective coated lenses cut down on glare.

PRODUCT #	DETAILS	WEIGHT
62831	Available in limited Rx	65g.

AVAILABLE IN THESE FIVE COLORS:



Black

Blue

Gold

Red

Silver



Shown in Black

Recommended for face shapes:



OVAL



SQUARE



HEART

ULTRALITE

Who says protective eyewear can't be ultra comfortable, especially around the nose? With a soft rubber nose bridge and ultrasoft nose pads, the Ultralite is gentle on the face—even during long procedures. Uniquely suited for high prescription lenses, the Ultralite's frame features flex hinges and a durable head strap.

Nonprescription (plano) lenses contain an antireflective coating to reduce glare.

PRODUCT #	DETAILS	WEIGHT
61478	Available in limited Rx	71g.

AVAILABLE IN THESE FOUR COLORS:



Black

Blue

Red

Silver



Shown in Red

Recommended for face shapes:



OVAL



SQUARE



HEART



Shown in Gold

Recommended for face shapes:

These are also suitable for those with a wide or flat nose bridge.



OVAL



SQUARE

METALITE

The quality of the construction is evident in the Metalite model. An optical steel base metal is fitted with a bronze electroplate for strength and stability. Custom fitted 0.50mm leaded side shields attach to the top rims of the lens frames to provide proper protection from radiation exposure at oblique angles. Silicon, nonslip nose pads can be adjusted to provide a comfort fit. The Metalite is available in antique and gold.

PRODUCT #	DETAILS	WEIGHT
62876	Available in all Rx – Bronze	65g.
64753	Available in all Rx – Gold	65g.

AVAILABLE IN THESE TWO COLORS:



Antique



Gold



Shown in Black

Recommended for face shapes:



OVAL



ROUND

FITOVERS

Protect your eyes—and your prescription eyewear—from exposure and liquid splashes with the oversized design of the Fitovers. Originally intended to fit over a pair of prescription lenses, these Fitovers are generously sized with clear side shields to protect against lateral exposure while reducing the “tunnel vision” commonly experienced with lesser quality look-alikes.

PRODUCT #	DETAILS	WEIGHT
61456	Non-Rx Only	115g.

AVAILABLE IN THESE TWO COLORS:



Black



Tortoise

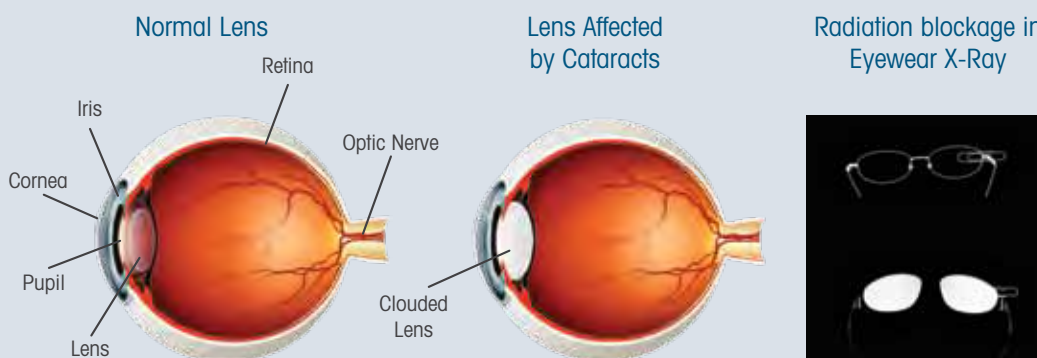
EYEWEAR FACTS

BAR-RAY offers a variety of protective eyewear products to suit various styles, coverage options, professions and budgets. Protective leaded eyewear is being used by 95 percent of the staff in Cath and EP labs. However, the usage of this eyewear is becoming even more frequent in urology, interventional radiology, pain management and orthopedic surgery settings.

The NCRP (National Council on Radiation Protection) has established maximal permissible doses of radiation for individuals who receive occupational exposure. The NRC (Nuclear Regulatory Commission) suggests that occupational exposure be **as low as reasonably achievable**.

FACTS ABOUT RADIATION EXPOSURE AND RADIATION PROTECTIVE EYEWEAR

- Relatively low amounts of radiation exposure can damage the conjunctiva, iris, sclera and blood vessels of the retina.
- The lens of the eye, along with bone marrow, is highly sensitive to radiation. A PSC (Posterior Subcapsular Cataract) forms in the back of the eye lens, decreasing contrast sensitivity before affecting visual acuity. PSC cataracts differ from most forms of age-related cataracts, which interfere with visual acuity first. Research shows that people are developing cataracts at much lower radiation doses than permissible limits allow. — *Dr. Basil V. Worgul, Columbia University College of Physicians and Surgeons*
- The International Atomic Energy Agency (IAEA) states that the use of leaded protective eyewear alone can reduce the dose rate of radiation to the lens by a factor of 5 to 25. — *IAEA in Vienna, Austria**
- Interventional radiology carries occupational risks for cataracts. Researchers have increasingly found that the frequency and severity of PSC cataracts have increased with age and number of years in practice. — *Dr. Ziv J. Haska, Professor of Radiology and Surgery, Vice Chair of Radiology, Director of Image Guided Therapy and Interventional Oncology, and Chief of the Vascular and Interventional Radiology Division at the University of Maryland Medical Center, Baltimore, Maryland*



(above center) Illustration showing how the eye is affected by cataracts.

(above right) Regular eyewear and a leaded pair are shown. This image demonstrates how radiation is blocked with the usage of leaded eyewear.

PANORAMA SHIELD — 400 SERIES



Offering a wide area of protection, the Panorama Shield – 400 Series meets the needs of individuals who wear prescription glasses or those who want to protect more than just their eyes from radiation or liquid splashes. The 0.10mm lead impregnated, acrylic, face-formed shield is suspended from a dual adjustable headpiece. By rotating the dials located on the temples of the headpiece, the shield can be positioned to any desired angle. A second adjustable dial located on the headband allows you to increase or decrease the hat size to achieve a secure, comfortable fit. To clean, wipe shield with a soft cloth. Do not use abrasive cleaning materials as these may damage the lens surface. This item cannot be sterilized at high temperatures or with high pressure.

PRODUCT #	DETAILS	WEIGHT	PROTECTION
68528	Non-Rx Only	350g. (12.3 oz.)	0.10mm



PANORAMA SHIELD — 450 SERIES

Here’s a shield designed to protect the entire face from chin to brow. Similar to the Panorama Shield – 400 Series, the 450 Series offers a wide area of protection for individuals who wear prescription glasses or who want more protection for their face. The 0.10mm lead impregnated, acrylic, stationary, face-formed shield extends from a headpiece brow band to provide an 8-inch area of protection for the face—ideal for splash protection. An adjustable strap on the rear of the headband allows you to increase or decrease the hat size to achieve a secure, comfortable fit. To clean, wipe shield with a soft cloth. Do not use abrasive cleaning materials as these may damage the lens surface. This item cannot be sterilized at high temperatures or with high pressure.

PRODUCT #	DETAILS	WEIGHT	PROTECTION
69639	Non-Rx Only	395g. (14 oz.)	0.10mm

Visit our website www.bar-ray.com for all the up-to-date information on our products, as well as **NEW** products we may have.

PROTECTIVE LASER EYEWEAR



Laser eyewear can protect the eyes from hazardous reflected or scattered high power laser light (radiation). We've helped simplify the process of selecting the appropriate pair of laser eyewear for protection from Class 3R, Class 3B and Class 4 laser systems. All laser glasses meet or exceed ANSI Z136.1 requirements for use with these laser system classes.

When buying laser safety eyewear, keep in mind the appropriate wavelength range and optical density needed for your specific laser system. Refer to our filter chart below or contact us by telephone at 800-359-6115 or e-mail info4barray@bar-ray.com for assistance.

LASER EUROLITE

The Laser Eurolite was created with visibility and protection in mind. The standard, economy safety frame design provides a large viewing area while 0.40mm lead equivalent side shields offer added protection for the sides of the eyes during use. Laser eyewear has been used extensively in medical, military, research and education, and industrial settings. Refer to the filter list below to select the appropriate filter necessary for use with your specific laser system.

PRODUCT #	DETAILS	WEIGHT
65874	Non-Rx Only	65g.



Recommended for face shapes:



LASER FRAME

Featuring a wrap-around design, the Laser Frame's lightweight yet durable nylon, economy, safety frame construction does not sacrifice comfort for protection. Rubber nose pads help cushion the eyewear on the face during use. The wide lens area offers critical protection for the sides of the eyes, eliminating the need for side shields. Laser eyewear has been used extensively in medical, military, research and education, and industrial settings. Refer to the filter list below to select the appropriate filter necessary for use with your specific laser system.

PRODUCT #	DETAILS	WEIGHT
61732	Non-Rx Only	28g.



Recommended for face shapes:



FILTER CHART

FILTERS	WAVELENGTH	OPTICAL DENSITY	COLOR	VISIBLE LIGHT TRANSMISSION	PART #
AKG-5 Homium/Yag/Co2 Filter	900-1000nm	5+	Clear	Excellent Visibility	LS-KG5 ■
	1000-1500nm	5+	Clear	Excellent Visibility	LS-KG5 ■
	1500-2400nm	5+	Clear	Excellent Visibility	LS-KG5 ■
	2900-10600nm	7+	Clear	Excellent Visibility	LS-KG5 ■
Multiwave YAG, Alexandrite Diode	700-1200nm	7+	Light Blue	64%	LS-BG42 ■
Argon KTP	190-532nm	5+	Orange	46.4%	LS-AKP ■ ■
	5000-11000nm	6+	Orange	46.4%	LS-AKP ■ ■
Co2/Excimer	190-370nm	5+	Clear	82%	LS-CD2 ■ ■
	10600nm	6+	Clear	82%	LS-CD2 ■ ■

■ Laser Eurolite ■ Laser Frame



Shown in Gold

Recommended for face shapes:

These are also suitable for those with a wide or flat nose bridge.



OVAL



HEART

WAHINE

A sturdy metal frame, flex hinges and rubber padded temples make this eyewear an excellent choice for protection at an economical price. The curved metal lens support for the frames adds a unique feminine flair to the design.

PRODUCT #	DETAILS
61432	Non-Rx Only



Shown in Silver

Recommended for face shapes:



OVAL



SQUARE



HEART

SURFER

The Surfer sports the same sleek and stylish look as the Nanolite but at an economical price. Extended lenses, with an antireflective coating to reduce glare, enhance protection coverage by eliminating the need for side shields. Rubber pads on the temples prevent slippage during procedures. **AVAILABLE IN SILVER ONLY.**

PRODUCT #	DETAILS
67773	Non-Rx Only



Shown in Brown Tortoise

Recommended for face shapes:



OVAL



HEART

SUNRISE

Mirroring the design of the Wrap Around, the economically priced Sunrise's durable frame and wide lens space maximize visibility and protection. Adjustable nose pads offer comfort and support during use. The frame design bears a tortoise pattern. **AVAILABLE IN BLUE, BROWN, GREEN, GREY, PURPLE AND WHITE.**

PRODUCT #	DETAILS
67788	Non-Rx Only



Shown in Gold

Recommended for face shapes:

These are also suitable for those with a wide or flat nose bridge.



OVAL



ROUND



SQUARE

MAUKA

With a durable metal frame, flex hinges and rubber padded temples for comfort, this eyewear provides optimum protection at an economical price. The wide-width frame design gives this eyewear a sophisticated masculine flair.

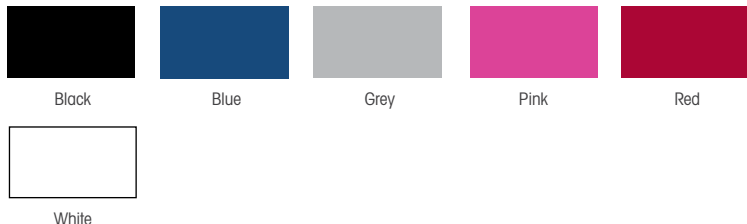
PRODUCT #	DETAILS
68765	Non-Rx Only

BREEZE

The narrow-framed design makes the Breeze suitable for small to medium facial structures. A flared saddle nose bridge and flex hinges offer anyone who wears this frame a comfortable fit.

PRODUCT #	DETAILS
65021	Non-Rx Only

AVAILABLE IN THESE SIX COLORS:



Shown in Pink

Recommended for face shapes:



HALF FACE SHIELD

Affording the same wide area of protection as the Panorama Shield, and at an economical price, the Half Face Shield is especially useful for individuals who wear prescription glasses or those who desire more protection for their face from radiation or liquid splashes. The 0.10mm lead impregnated, acrylic, face-formed shield is suspended from a dual adjustable headpiece. By rotating the dials located on the temples of the headpiece, the shield can be adjusted to any desired angle. Increase or decrease the hat size by adjusting a second dial located on the headband. To clean, wipe shield with a soft cloth. Do not use abrasive cleaning materials as these may damage the lens surface. This item cannot be sterilized at high temperatures or with high pressure.

PRODUCT #	DETAILS	WEIGHT	PROTECTION
61826	Non-Rx Only	431g. (15.2oz.)	0.10mm



FULL FACE SHIELD

Here's a shield designed to protect the entire face from chin to brow. Similar to the Panorama Shield, and at an economical price, the Full Face Shield offers a wide area of protection for individuals who wear prescription glasses or who want more protection for their face. The 0.10mm lead impregnated, acrylic, stationery, face-formed shield extends from a headpiece brow band to provide an 8-inch area of protection for the face—ideal for splash protection. An adjustable strap on the rear of the headband allows you to increase or decrease the hat size to achieve a secure, comfortable fit. To clean, wipe shield with a soft cloth. Do not use abrasive cleaning materials as these may damage the lens surface. This item cannot be sterilized at high temperatures or with high pressure.

PRODUCT #	DETAILS	WEIGHT	PROTECTION
67391	Non-Rx Only	499g. (17.6oz.)	0.10mm



VEST AND SKIRT MOBILE RACK



Conveniently store up to 10 sets of vests and skirts with this mobile rack. Ships via motor freight.

PRODUCT #	DETAILS	DIMENSIONS	WEIGHT
63598	Vest and Skirt Mobile Rack	39"L x 26"W x 55"H	78 lbs.

MAXI RACK

This new variation of a mobile rack has pivoting arms and locking casters. Holds 10 aprons. Some assembly required. Ships via motor freight.

PRODUCT #	DETAILS	DIMENSIONS	WEIGHT
61793	Maxi Rack	51"L x 24"W x 50"H	110 lbs.



APRON RACKS

VALET RACK

This valet holds up to 300 lbs. of aprons. It is constructed of sturdy painted metal and features wheels that can lock in place. Five hangers are included with each unit. Additional hangers can be purchased separately. Some assembly required.

PRODUCT #	DETAILS	DIMENSIONS	WEIGHT
69380	Apron Valet with 5 hangers	35"W x 54"H x 24"D	47 lbs.
69385	Additional hangers for the Apron Valet (set of 5)		5 lbs.



SPIDER RACK

Mobile storage for eight aprons is housed on a five leg star-shape base with nylon casters. Available with glove holder. Base is 26" wide. Some assembly required.

PRODUCT #	DETAILS	WEIGHT
60112	Spider Rack only	30 lbs.
60116	Spider Rack with glove holder	38 lbs.



PEG RACK

The Peg Rack offers quick and easy storage for one or four aprons. Manufactured of high tensile aluminum, our rack doesn't outweigh the aprons. Pegs are 4 3/4" long.

PRODUCT #	DETAILS	DIMENSIONS	WEIGHT
60073	1 apron	8"W x 3"H	6 lbs.
60081	4 apron	20"W x 3"H	12 lbs.

COMPACT RACK

The compact wall-hugging design provides storage for two aprons and a pair of gloves. Some assembly required.

PRODUCT #	DETAILS	DIMENSIONS	WEIGHT
60098	Compact Rack	18"W x 19 1/2"H x 6 1/2"D	10 lbs.

DELUXE HANGER

Our chrome-plated steel hanger will hold the heaviest apron.

PRODUCT #	DETAILS	DIMENSIONS	WEIGHT
60999	Deluxe Hanger	18"W x 8"H	1 lb.

CLOSE LOOP HANGER

The chrome-plated steel hanger is strong enough to accommodate any apron. The closed-loop design keeps the hanger from disappearing from a rack.

PRODUCT #	DETAILS	DIMENSIONS	WEIGHT
66693	Close Loop Hanger	18"W x 8"H	1 lb.

ECONOMY HANGER

Steel nickel plated hanger is sturdy enough for any apron.

PRODUCT #	DETAILS	DIMENSIONS	WEIGHT
69748	Economy Hanger	21"W x 9 1/2"H	1 lb.

Installation hardware not included.

APRON RACKS



APRON RACK

This rack is designed to hold one apron and a pair of gloves in a minimum amount of space. The rack is ideal for the Surgical Drop-Off apron, which should be draped for storage. Some assembly required.

PRODUCT #	DETAILS	DIMENSIONS	WEIGHT
60195	Apron Rack	27"W x 7"H x 7 1/2"D	8 lbs.



TUBULAR RACK

This rack is designed to hold an apron and a pair of gloves. Heavy duty painted steel construction will provide many years of use. Some assembly required.

PRODUCT #	DETAILS	DIMENSIONS	WEIGHT
60065	Tubular Rack	27 1/2"W x 16"H x 9 1/2"D	7 lbs.



FIVE APRON RACK

Arms fold flush against the wall and are available in right- and left-folding models. Dimensions folded: 28"W x 4 1/8"D, arms 90° to wall: 26"D, overall height 9". Arm length: 27 1/2".

PRODUCT #	DETAILS	WEIGHT
66685	Left	15 lbs.
66690	Right	15 lbs.



APRON BAG

This barrel-style nylon bag allows you to easily transport your protective apron from one location to another. It can also provide storage when the apron is not in use. Constructed of heavy duty nylon with a cardboard tube to roll your apron around for easy insertion into the bag. An adjustable shoulder strap and two handles make it easy to carry.

PRODUCT #	DETAILS	DIMENSIONS	WEIGHT
67539	Apron Bag	28"L x 8" Diameter	2 lbs.



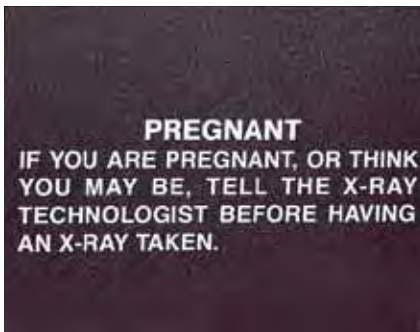
Installation hardware not included.



ILLUMINATED SIGNS

Highly visible signs help prevent unnecessary exposure to staff and patients.

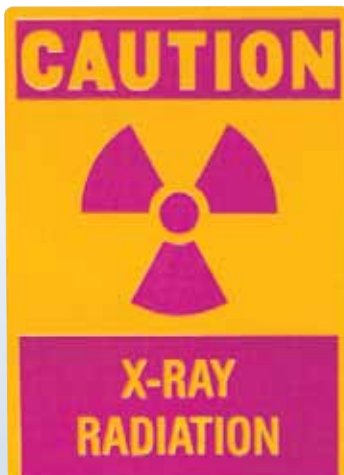
PRODUCT #	DETAILS	DIMENSIONS	WEIGHT
69843	X-Ray In Use	10 1/2"W x 7 1/2"H x 2"D	5 lbs.
69844	Darkroom In Use	10 1/2"W x 7 1/2"H x 2"D	5 lbs.
69845	CT In Use	10 1/2"W x 7 1/2"H x 2"D	5 lbs.
69846	MRI In Use	10 1/2"W x 7 1/2"H x 2"D	5 lbs.



PREGNANCY WARNING SIGNS

These signs give important information to patients. Double-faced tape is attached to each sign for easy mounting.

PRODUCT #	DETAILS	DIMENSIONS	WEIGHT
61285	English	10"W x 8"H	1 lb.
61954	Spanish	10"W x 8"H	1 lb.
61341	Combined	10"W x 8"H	1 lb.



RADIATION WARNING SIGN

This brightly colored mylar sign comes with an adhesive backing.

PRODUCT #	DETAILS	DIMENSIONS	WEIGHT
60966	Caution	7"W x 9 1/2"H	1 lb.

BRITE SPOT

The Brite Spot features a metal housing, bulb, rheostat foot switch, interior reflector and fixed iris.

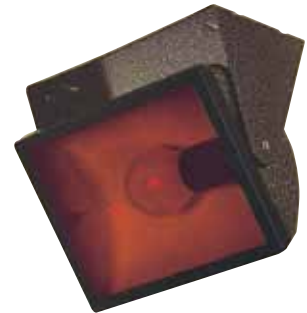
PRODUCT #	DETAILS	WEIGHT
69495	110V	8 lbs.



SAFELITE

The Safelite floods a darkroom with safe, workable light. It can be used on a tabletop, mounted on a wall or hung from a ceiling. Comes complete with a 7.5W bulb, 6' cord, on/off switch and a red filter.

PRODUCT #	DIMENSIONS	WEIGHT
69645	10" x 12"	5 lbs.
69648	5" x 7"	4 lbs.



OMNI-DIRECTIONAL

Unique design emits safe light in all directions. Includes 7.5W bulb, on/off line switch and red filter.

PRODUCT #	DIMENSIONS	WEIGHT
69875	5" x 7"	5 lbs.



SCREW-IN SAFELITE

Parabolic shape with red filter provides even illumination. Requires 7.5W bulb (not included).

PRODUCT #	WEIGHT
65825	3 lbs.



ID PRINTER



AUTOMATIC — The one-time exposure adjustment is designed to suit processing variations. It will supply sharp images of patient information from an ID card. A glow light indicates exposure is being made. The printer offers easy adjustment for Kodak-type window cassette ID card. (Cards not included.)

PRODUCT #	DETAILS	DIMENSIONS	WEIGHT
65280	110V	8 3/4" x 8 3/4" x 2 1/2"H	5 lbs.

MOBILE CASSETTE HOLDER

The all-metal Mobile Cassette Holder is used to hold cassettes/grids/CR-Plates (8" x 10" to 14" x 17") during mobile procedures. Unit stands on a sturdy three-leg base with swivel locking wheels. Finish is putty enamel. Measures 46" tall with a 16" height adjustment; the maximum height is 46".

PRODUCT #	DETAILS	WEIGHT
62856	Mobile Cassette Holder with L/R Tilt	58 lbs.
69294	Mobile Cassette Holder with L/R & Up/Down Tilt	58 lbs.

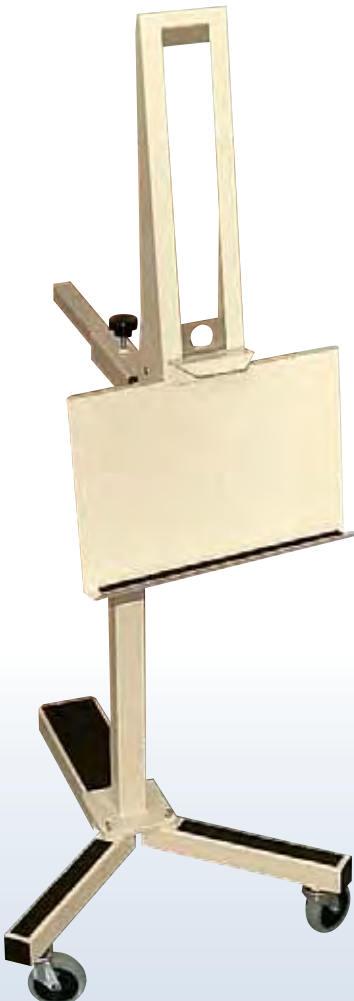


CHART & FILM HOLDER

This smoked Plexiglas film holder wipes clean with a soft, damp cloth. Screw holes are provided for easy mounting. Inside dimensions are 15" x 18".

PRODUCT #	DETAILS	DIMENSIONS	WEIGHT
69100	Chart & Film Holder	19"W x 15 1/2"H x 2"D	8 lbs.



FILM RACK

Wall-mounted steel units will accommodate film caddies, film jackets and cassettes. Contains smoked Plexiglas front panels. Openings are 22"W x 14"H x 5"D.

PRODUCT #	SIZE	DIMENSIONS	WEIGHT
64845	Double	22 1/4"W x 39 1/4"H x 5 1/4"D	35 lbs.



ECONOTANK®

Constructed of type 316 stainless steel, this system may be configured in different ways to suit individual requirements. Standpipe drain system allows continuous water flow during processing to maintain solution temperature and provide more complete washing, as well as easy draining, when changing solutions. Plastic plumbing connections prevent rust.

PRODUCT #	DETAILS	DIMENSIONS	WEIGHT
60600	Includes two 5-gallon inserts, plumbing and stand	20 1/4"W x 36"H x 16 1/2"D	63 lbs.

OPTIONS

Covers reduce evaporation and fumes.

PRODUCT #	DETAILS	WEIGHT
62101	5-gallon insert cover	2 lbs.
60279	Flush cover	5 lbs.





EAR PLUGS

A box of 200 contains individually packaged pairs – perfect for use with MRI.

PRODUCT #	WEIGHT
66430	2 lbs.



CAVI WIPES

CaviCide® is a convenient, ready-to-use, intermediate-level disinfectant which is effective against TB, HBV, viruses (hydrophilic and lipophilic), bacteria (including MRSA and VRE) and fungi. CaviCide® is safe for use on aprons and any nonporous surface.

PRODUCT #	DETAILS	WEIGHT
68123	160 per container	2 lbs.
65423	Wall Rack	3 lbs.



PATIENT CALIPER

Made of lightweight aluminum with adjustment slide, the scale reads in both inches and centimeters.

PRODUCT #	WEIGHT
67046	2 lbs.



LEADX® LEAD VINYL BLOCKERS

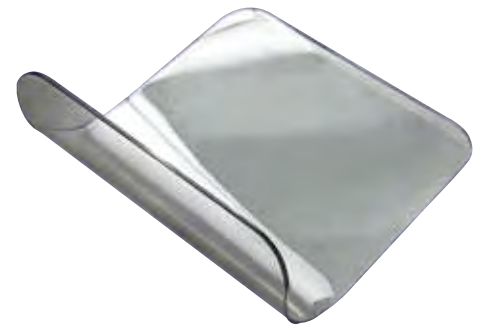
These Lead Vinyl Blockers are made of durable, flexible, 0.50mm lead vinyl.

PRODUCT #	SIZE	WEIGHT
60618	4" x 10"	0.5 lb.
60619	5" x 8"	0.4 lb.
60620	5" x 12"	0.6 lb.
60622	5 1/2" x 14"	0.8 lb.
60621	6" x 10"	0.8 lb.
60623	7" x 11"	0.8 lb.
60624	7" x 17"	1.3 lb.
60625	8 1/2" x 14"	1.3 lb.

ARM SUPPORT

This unique device slips under a mattress and patient to hold his/her arms along the side while in a prone or supine position. The Arm Support is excellent for use during specials, catheterization and nuclear medicine studies. Clear plastic provides a view of the patient at all times and eliminates the use of adhesive tape, sand bags or straps that obstruct access to the patient. Sold in pairs.

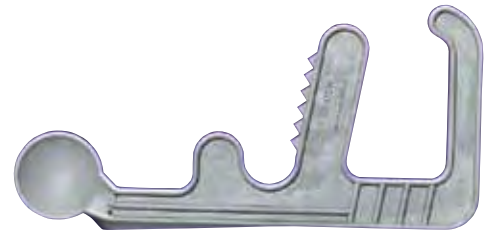
PRODUCT #	DETAILS	DIMENSIONS	WEIGHT
69210	1 pair	11 3/4"L X 12"W	4 lbs.



F-SPOON

The F-Spoon is a hand-held, lever-action, radiolucent device used by a radiologist during supine abdominal fluoroscopy to displace bowel loops from one another and to better visualize tumors, ulcers and other abnormalities of the gastrointestinal tract.

PRODUCT #	DIMENSIONS	WEIGHT
62487	16 3/4"L x 6 1/2"W	3 lbs.

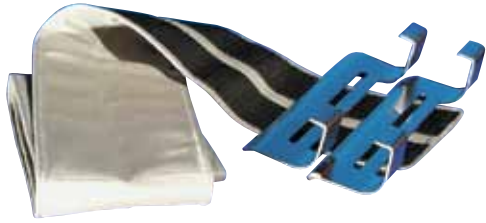


PNEUMATIC COMPRESSION PADDLE

The Pneumatic Compression Paddle is used for guided compression during radiographic studies of the gastrointestinal tract. The paddle is inflated beneath the patient to increase pressure in a concentrated area. The paddle is made of acrylic. The imbedded metal ring provides quick fluoroscopic localization. Replacement parts and a wall hanger are available.

PRODUCT #	DETAILS	WEIGHT
5000	Pneumatic Compression Paddle	2 lbs.
5001	Replacement Bladder — Latex	1 lb.
5002	Replacement Air Inflation Bulb	1 lb.
5004	Wall Hanger Only	1 lb.

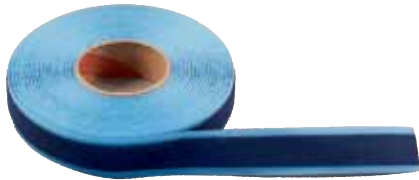




GRABBER SYSTEM

Our grabber brackets will fit any table. They are made of stainless steel and will accommodate any of our 5" wide straps. They are easy to use, quick on and off. Includes the unibody strap and a pair of grabber brackets. Radiolucent.

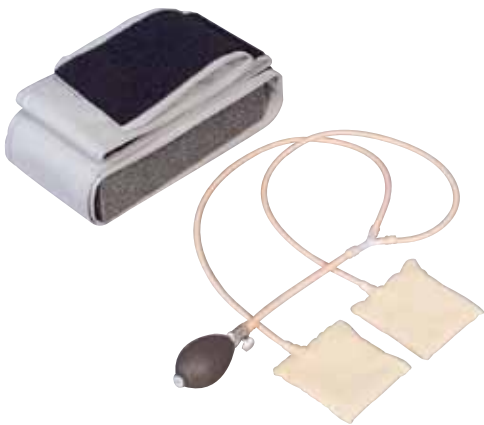
PRODUCT #	DETAILS	WEIGHT
7015	Grabber System	2 lbs.
7005	Grabber Brackets only — 1 pair	1 lb.



MULTI-STRAP

Multi-Strap is a Velcro strap that has the soft side of Velcro and the hook side of Velcro affixed back to back. It is as strong as tape but soft to the skin. It is also reusable, radiolucent and easily applied. It can be cut to any length.

PRODUCT #	DETAILS	WEIGHT
6023	Multi-Strap 30' roll x 3" W	1.5 lbs.



IVP URETER COMPRESSION DEVICE

The Ureteral Compression Device is used in excretory urography. The belt fits around the waist of the patient so that he or she may be repositioned quickly for studies at any angle. The belt is 65"L and the plastic plate is sewn into the belt for easy handling.

PRODUCT #	DETAILS	WEIGHT
5005	Ureteral Compression Device	2 lbs.

REPLACEMENT PARTS

PRODUCT #	DETAILS	WEIGHT
5002	Air Inflation Bulb — Latex	1 lb.
5013	Balloons with covers, 1 pair (includes tubing to the connector)	1 lb.



PATIENT RESTRAINT BELT

Our Patient Restraint Belt secures the patient to the table or wheelchair.

PRODUCT #	DETAILS	WEIGHT
61973	5" x 76"	1 lb.



SHORT



SLIM



STANDARD



X-LARGE

TRANSFER BOARDS

These radiolucent Transfer Boards promote safe and easy patient transfers. The slippery surface permits easy placement under the patient. With minimal help, you can transfer the patient from bed to gurney to x-ray table. Leave the unit under the patient during the exam. Can be used in radiology, MRI or CT. Not antistatic. Wrist straps included.

PRODUCT #	DETAILS	DIMENSIONS	WEIGHT
68642	Short	22"W x 32"L x 3/16" thick	4.5 lbs.
67546	Slim	18"W x 72"L x 3/16" thick	8 lbs.
60182	Standard	22"W x 72"L x 3/16" thick	10 lbs.
63582	X-Large	32"W x 72"L x 1/4" thick	19 lbs.
65190	Wall storage bracket	8"W x 3"H	6 lbs.

LEADX® LEAD VINYL

LeadX® is a flexible protective material available in three lead equivalents for use where radiation protection is desired or for adding protection. Smooth, nonabsorbent vinyl surface is easily cleaned.



PRODUCT #	0.25MM BLACK	PRODUCT #	0.50MM GREY	PRODUCT #	1.0MM CREAM
60019	24" x 24"	60003	24" x 24"	60111	24" x 24"
60055	24" x 36"	60851	24" x 36"	61640	24" x 36"
60152	24" x 48"	60017	24" x 48"	60180	24" x 48"
60300	36" x 48"	60915	36" x 48"	62270	36" x 48"
60515	48" x 48"	60072	48" x 48"	60595	48" x 48"
60606	larger	60967	larger	61111	larger
61597	prep charge	61597	prep charge	61597	prep charge



LEADX® LEAD VINYL CURTAINS

These Lead Vinyl Curtains are ideal for areas where secondary or low-level radiation is present, yet access is required. Complete with track and trolleys. Installation hardware not included.

DOORWAY CURTAINS

PRODUCT #	DETAILS	DIMENSIONS
62307	0.50mm - Grey	Up to 2' x 7'
68218	0.50mm - Grey	Up to 4' x 7'
64251	1.00mm - Cream	Up to 2' x 7'
67444	1.00mm - Cream	Up to 4' x 7'
61597	Prep charge per curtain	

ROOM DIVIDER CURTAINS

PRODUCT #	DETAILS
61938	0.50mm; 1/16" thick, 1 1/2 lb./ft. - Grey
61939	1.00mm; 1/8" thick, 3 lb./ft. - Cream
61597	Prep charge per curtain

PROTECTIVE BLANKETS

Nylon-covered 0.50mm equivalent protective blanket may be used for shielding patients or equipment. **NO COLOR CHOICE AVAILABLE. ALSO AVAILABLE WITH YOUR HOSPITAL LOGO.**

PRESTIGE Lightest Weight Lead Free	STARLITE Lightweight Lead Free	TRUELITE Lightweight Contains Lead	COST CRUNCHER Traditional Weight Contains Lead	DETAILS
54963	44100	64100	60020	24" x 24"
52314	44202	64202	60109	24" x 36"
57463	44515	64515	60220	24" x 48"



PORTA SHIELD

Similar to the Adjustable Mobile Shield, this shield adjusts from 24" to 48" in height. Frame features preset holes to easily adjust to a level height. Shield only 24 1/2" x 35 1/2", Base 24" x 22". Ships oversized. **NO COLOR CHOICE AVAILABLE. ALSO AVAILABLE WITH YOUR HOSPITAL LOGO.**

PRODUCT #	DETAILS	WEIGHT
61743	0.50mm	40 lbs.
65289	0.75mm	42 lbs.
64796	1.00mm	45 lbs.



ADJUSTABLE MOBILE SHIELD



The Adjustable Mobile Shield is excellent for patient protection during diagnostic procedures such as erect chest and cervical spine. Includes a durable nylon-covered 0.50mm shield. Height adjustable from 36" - 60". Rolls on a sturdy star-leg base for extra stability and easy movement. 26" base. Ships oversized. **NO COLOR CHOICE AVAILABLE. ALSO AVAILABLE WITH YOUR HOSPITAL LOGO.**

PRODUCT #	DIMENSIONS	WEIGHT
62531	24" x 24"	25 lbs.
62532	24" x 36"	30 lbs.
62533	24" x 48"	35 lbs.
62535	24" x 28" Split Shield	37 lbs.



REPLACEMENT SHIELDS

Replacement Shields are now available. Contact us for a quote. **NO COLOR CHOICE AVAILABLE. ALSO AVAILABLE WITH YOUR HOSPITAL LOGO.**

TABLE DRAPES

The Table Drapes are designed to securely fit any style table using Velcro. The panels protect the staff against radiation scatter to the lower extremities. Specify single-sided or double-sided when ordering. For double-sided drapes, please specify table width. **NO COLOR CHOICE AVAILABLE. ALSO AVAILABLE WITH YOUR HOSPITAL LOGO. NON-RETURNABLE.**

PRODUCT #	DIMENSIONS — W x L	WEIGHT
61359	Single-Sided 48" x 24"	48 lbs.
63482	Single-Sided 48" x 28"	58 lbs.
65632	Single-Sided 48" x 36"	72 lbs.
67748	Single-Sided 36" x 24"	36 lbs.
69147	Single-Sided 36" x 28"	43 lbs.
62998	Single-Sided 36" x 36"	54 lbs.
62798	Double-Sided 48" x 24"	96 lbs.
64184	Double-Sided 48" x 28"	115 lbs.
66221	Double-Sided 48" x 36"	144 lbs.
68954	Double-Sided 36" x 24"	72 lbs.
61245	Double-Sided 36" x 28"	86 lbs.
63145	Double-Sided 36" x 36"	108 lbs.



PATIENT WRAP

Our original design of the Patient Wrap will help in CT studies to protect the patient from unnecessary radiation exposure. The 30" x 60" shield goes under and around the patient, enveloping him/her in a 0.50mm Pb equivalent wrap. The convenient Velcro and strap fasteners enable easy closure around the patient. A must for every CT department. **NO COLOR CHOICE AVAILABLE.**
ALSO AVAILABLE WITH YOUR HOSPITAL LOGO.

PRODUCT #	DETAILS
58796	PRESTIGE (Lightest Weight — Lead Free)
44585	STARLITE (Lightweight — Lead Free)
65545	TRUELITE (Lightweight — Contains Lead)
63325	COST CRUNCHER (Traditional Weight — Contains Lead)



For up-to-date information on our products, new items and care instructions for our radiation protection material, visit www.bar-ray.com.



604-CEN-68CM



6096-Lamp-HC



600-34-TMSS-LG



303-T3.OC



CEILING SHIELDS

The 60 x 80cm ceiling-mounted radiation shield comes with a center mount ball and socket joint. This design allows the 0.50mm Pb lead acrylic window to be rotated and tilted at its pivot point for the optimum placement between patient and physician. The shield is supplied with a ceiling column that can accommodate an optional surgical lamp. Track and carriage are sold separately. **NON-RETURNABLE.**

PRODUCT #	DETAILS
604-CEN-68CM	Ceiling-mounted radiation shield. Column included.
6096-Lamp-HC	Surgical lamp to mount to radiation shield. Column not included.
303-T3.OC	3.0 meter-long ceiling track and carriage system only
303-T25C	2.5 meter-long ceiling track and carriage system only
303-T2C	2.0 meter-long ceiling track and carriage system only
600-34-TMSS-LG	Monitor Suspension System

MOBILE BARRIER

The Mobile Barrier offers 1.5mm protection throughout. Beige vinyl covering. Lead glass window is factory installed.
NON-CANCELABLE. NON-RETURNABLE.

PRODUCT #	DETAILS
63585 <small>SHOWN</small>	Mobile Barrier 24" x 75" with 8" x 10" Glass
64101	Mobile Barrier 24" x 84" with 8" x 10" Glass
67514	Mobile Barrier 30" x 75" with 8" x 10" Glass
61101	Mobile Barrier 30" x 84" with 8" x 10" Glass
64111	Mobile Barrier 24" x 75" with 10" x 12" Glass
68951	Mobile Barrier 24" x 84" with 10" x 12" Glass
62254	Mobile Barrier 30" x 75" with 10" x 12" Glass
61844	Mobile Barrier 30" x 84" with 10" x 12" Glass
65564	Mobile Barrier 36" x 75" with 10" x 12" Glass
66101	Mobile Barrier 36" x 84" with 10" x 12" Glass
64445	Mobile Barrier 24" x 75" with 12" x 16" Glass
68862	Mobile Barrier 24" x 84" with 12" x 16" Glass
61873	Mobile Barrier 30" x 75" with 12" x 16" Glass
66881	Mobile Barrier 30" x 84" with 12" x 16" Glass
61119	Mobile Barrier 36" x 75" with 12" x 16" Glass
68787	Mobile Barrier 36" x 84" with 12" x 16" Glass
65511 *	Mobile Barrier 30" x 75" with 18" x 24" Glass
61103 *	Mobile Barrier 30" x 84" with 18" x 24" Glass
69857 *	Mobile Barrier 36" x 75" with 18" x 24" Glass
66102 *	Mobile Barrier 36" x 84" with 18" x 24" Glass
67785 *	Mobile Barrier 36" x 75" with 24" x 18" Glass
62229 *	Mobile Barrier 36" x 84" with 24" x 18" Glass
65871 *	Mobile Barrier 36" x 75" with 24" x 24" Glass
66103 *	Mobile Barrier 36" x 84" with 24" x 24" Glass
63481 *	Mobile Barrier 42" x 75" with 24" x 24" Glass
62573 *	Mobile Barrier 42" x 84" with 24" x 24" Glass
61148 *	Mobile Barrier 42" x 75" with 30" x 24" Glass
67474 *	Mobile Barrier 42" x 84" with 30" x 24" Glass
65558 *	Mobile Barrier 36" x 75" with 24" x 36" Glass
66104 *	Mobile Barrier 36" x 84" with 24" x 36" Glass
69584 *	Mobile Barrier 48" x 75" with 36" x 24" Glass
68114 *	Mobile Barrier 48" x 84" with 36" x 24" Glass
63257 *	Mobile Barrier 48" x 75" with 36" x 36" Glass
67777 *	Mobile Barrier 48" x 84" with 36" x 36" Glass
63929 * <small>SHOWN</small>	Mobile Barrier 48" x 84" with 36" x 48" Glass

Dimensions shown are width first.

* Large size glass window section is shipped separately from barrier for field assembly.

All Mobile Barriers are shipped via motor freight.

LEADED GLASS

The 1.9mm lead protective glass is a light amber color and mirror polished.
 Actual glass thickness is 5/16".

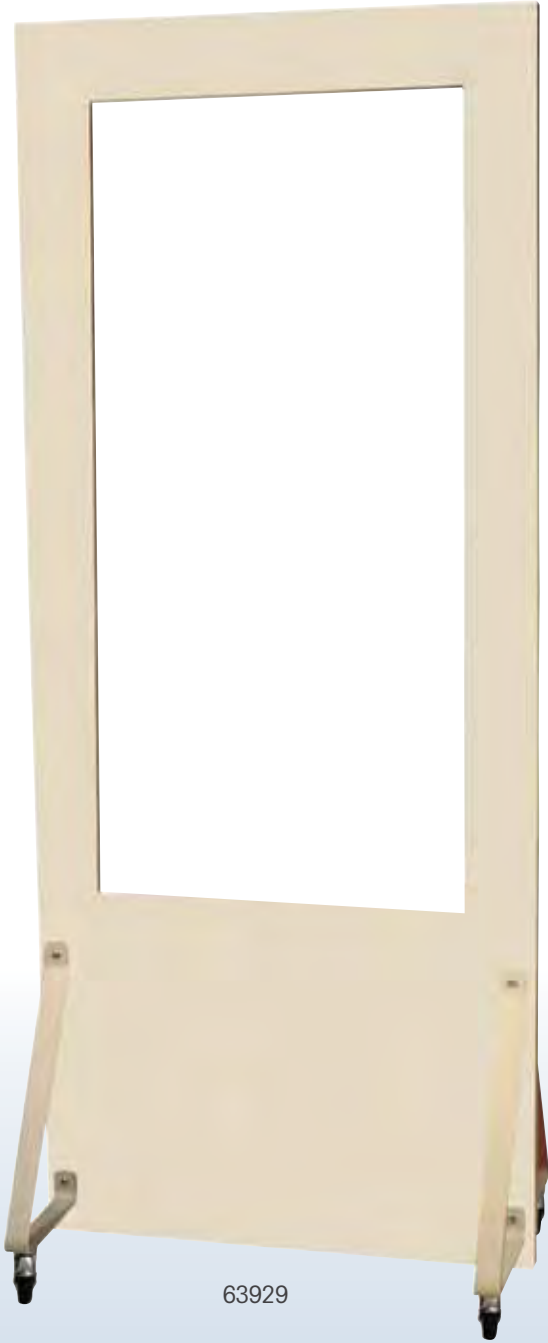
PRODUCT #	DIMENSIONS
69120	8" x 10" ***
60121	10" x 12" ***
61121	12" x 12" ***
60120	12" x 16" ***
65121 **	14" x 18" ***
64120 **	18" x 24"
67120 **	24" x 24"
68120 **	24" x 30"
68121 **	24" x 36"
67121 **	24" x 48"
69121 **	32" x 40"
64123 **	36" x 36"
61123 **	36" x 48"
63123 **	36" x 60"
65122 **	36" x 72"
65123 **	36" x 84"
66123 **	36" x 96"
60119 **	48" x 48"
66122 **	48" x 60"
60133 **	48" x 72"
60134 **	48" x 84"
60139 **	48" x 96"

**** NOTE: 69620 CRATING CHARGE APPLIES**





63585



63929



VETERINARIAN APRON

The Veterinarian Apron features a smooth surface that minimizes damage caused by animal claws. Durable yet soft 1" straps cross the back and tie securely in front, providing a snug and comfortable fit. Velcro shoulder strap prevents slippage. The apron is available in one size, 24" x 36".

AVAILABLE ONLY AS SHOWN.

0.50MM PROTECTION

60895K

COST CRUNCHER (Traditional Weight — Contains Lead)

PET TRANSPORTER

This transporter provides a safe and secure way to move your patient easily. It consists of fiberglass poles with rubber hand grips, stain-resistant nylon that is reinforced with 2" webbing and adjustable buckles to secure your patient. When not in use, it can be rolled up or hung for convenient storage.

EXCELLENT FOR EMERGENCY SERVICES.

AVAILABLE IN THESE TWO COLORS:



Royal Blue



Neon Green



PRODUCT #	DETAILS	WEIGHT
68480	60" with a 30" x 49" carrying area	13 lbs.

VET MITTENS

Unlike palm shields, our design gives full wrap around 0.50mm protection while positioning animals during procedures. Velcro wrist strap and now with nonslip material on palm prevent slippage while securing animals.

AVAILABLE ONLY AS SHOWN.

PRODUCT #	DETAILS	WEIGHT
69550	0.50mm pair	4 lbs.



CATEGORY	PAGE #
a girl's best friend	57
animal prints	30-31
asian	52
baby it's cold outside	28
bug out	48
camo	47
diamond prints	26-27
dot's dot	35-36
floral	58-59
hearts a lot	53-54
java jive	46
kid prints	49-50
nylon fabric	24-25
ocean life	62
petcetera	41-44
plaids	37-39
ports of call	51-52
psychedelic	45-46
quilt blocks	32
ribbon awareness	60
skulls	29
sports/games	55-57
stars/stripes	61
texture	33-34
tropical	40

#	CATEGORY	PAGE #
1	nylon fabric	24
3	nylon fabric	24
5	nylon fabric	24
6	nylon fabric	24
9	nylon fabric	24
10	nylon fabric	24
13	nylon fabric	24
19	nylon fabric	24
20	texture	33
21	nylon fabric	24
22	nylon fabric	24
23	nylon fabric	24
30	nylon fabric	24
32	nylon fabric	25
34	nylon fabric	25
35	nylon fabric	25
40	nylon fabric	25
41	nylon fabric	25
42	nylon fabric	25
43	nylon fabric	25
44	nylon fabric	25
46	nylon fabric	25

#	CATEGORY	PAGE #
47	nylon fabric	25
48	nylon fabric	25
49	nylon fabric	25
300	diamond prints	26
301	diamond prints	26
302	diamond prints	26
303	diamond prints	26
304	diamond prints	26
305	diamond prints	26
306	diamond prints	26
307	diamond prints	26
308	diamond prints	26
309	diamond prints	27
310	diamond prints	27
311	diamond prints	27
312	diamond prints	27
313	diamond prints	27
314	diamond prints	27
315	diamond prints	27
316	diamond prints	27
317	diamond prints	27
500	quilt blocks	32
501	psychedelic	45
502	stars/stripes	61
503	floral	58
504	animal prints	30
505	animal prints	30
506	stars/stripes	61
507	texture	33
508	stars/stripes	61
509	floral	58
510	ports of call	51
511	stars/stripes	61
512	petcetera	41
513	floral	58
514	psychedelic	45
515	asian	52
516	quilt blocks	32
517	quilt blocks	32
518	psychedelic	45
519	petcetera	41
520	ports of call	51
521	hearts a lot	53
522	texture	33
523	psychedelic	45
524	petcetera	41
525	kid prints	49
526	camo	47
527	camo	47

#	CATEGORY	PAGE #
528	camo	47
529	baby it's cold outside	28
530	skulls	29
531	texture	33
532	petcetera	41
533	camo	47
534	texture	33
535	petcetera	41
536	petcetera	41
537	petcetera	41
538	petcetera	41
539	hearts a lot	53
540	skulls	29
541	skulls	29
542	tropical	40
543	quilt blocks	32
544	plaids	37
545	dot's dot	35
546	animal prints	30
547	animal prints	30
548	animal prints	30
549	petcetera	41
550	psychedelic	45
551	sports/games	55
552	psychedelic	45
553	baby it's cold outside	28
554	texture	33
555	psychedelic	45
556	dot's dot	35
557	petcetera	41
558	plaids	37
559	plaids	37
560	plaids	37
561	petcetera	41
562	bug out	48
563	texture	33
564	sports/games	55
565	ocean life	62
566	petcetera	41
567	petcetera	42
568	petcetera	42
569	psychedelic	45
570	plaids	37
571	ports of call	51
572	petcetera	42
573	floral	58
574	tropical	40
575	kid prints	49
576	kid prints	49

FABRIC SWATCH INDEX

#	CATEGORY	PAGE #
577	kid prints	49
578	kid prints	49
579	psychedelic	45
580	psychedelic	45
581	petcetera	42
582	tropical	40
583	hearts a lot	53
584	hearts a lot	53
585	hearts a lot	53
586	hearts a lot	53
587	petcetera	42
588	tropical	40
589	sports/games	55
590	sports/games	55
591	texture	33
592	psychedelic	45
593	a girl's best friend	57
594	a girl's best friend	57
595	a girl's best friend	57
596	a girl's best friend	57
597	texture	33
598	sports/games	55
599	petcetera	42
600	hearts a lot	53
601	hearts a lot	53
602	hearts a lot	53
603	hearts a lot	54
604	ports of call	51
605	tropical	40
606	petcetera	42
607	quilt blocks	32
608	plaids	37
609	plaids	37
610	plaids	37
611	plaids	37
612	a girl's best friend	57
613	psychedelic	45
614	tropical	40
615	dot's dot	35
616	bug out	48
617	floral	58
618	petcetera	42
619	dot's dot	35
620	plaids	38
621	plaids	38
622	dot's dot	35
623	texture	34
624	kid prints	49
625	kid prints	49

#	CATEGORY	PAGE #
626	kid prints	49
627	kid prints	49
628	ports of call	51
629	psychedelic	46
630	baby it's cold outside	28
631	kid prints	49
632	kid prints	49
633	kid prints	49
634	kid prints	50
635	kid prints	50
636	asian	52
637	petcetera	42
638	tropical	40
639	kid prints	50
640	psychedelic	46
642	sports/games	55
643	petcetera	42
644	petcetera	42
645	petcetera	42
646	petcetera	43
647	baby it's cold outside	28
648	baby it's cold outside	28
649	baby it's cold outside	28
650	baby it's cold outside	28
651	bug out	48
652	bug out	48
653	bug out	48
654	bug out	48
655	petcetera	43
656	stars/stripes	61
657	stars/stripes	61
658	stars/stripes	61
659	stars/stripes	61
660	floral	58
661	floral	58
662	floral	58
663	floral	58
664	petcetera	43
665	petcetera	43
667	hearts a lot	54
668	hearts a lot	54
669	kid prints	50
670	kid prints	50
671	animal prints	30
672	stars/stripes	61
673	ocean life	62
674	animal prints	30
675	psychedelic	46
676	petcetera	43

#	CATEGORY	PAGE #
677	ports of call	51
678	sports/games	55
679	ocean life	62
680	ocean life	62
681	ocean life	62
682	ocean life	62
683	floral	58
684	petcetera	43
685	kid prints	50
686	kid prints	50
687	psychedelic	46
688	quilt blocks	32
689	floral	58
690	kid prints	50
691	ocean life	62
692	ocean life	62
693	animal prints	30
694	animal prints	30
695	texture	34
696	psychedelic	46
697	bug out	48
698	java jive	46
699	dot's dot	35
700	java jive	46
701	hearts a lot	54
702	texture	34
703	tropical	40
704	floral	58
705	ocean life	62
706	psychedelic	46
707	asian	52
708	plaids	38
709	petcetera	43
710	ports of call	51
711	kid prints	50
712	ports of call	51
713	animal prints	31
714	animal prints	31
715	hearts a lot	54
716	plaids	38
717	baby it's cold outside	28
718	ports of call	51
719	sports/games	55
720	kid prints	50
721	skulls	29
722	bug out	48
723	floral	59
724	floral	59
725	quilt blocks	32

#	CATEGORY	PAGE #
726	quilt blocks	32
727	quilt blocks	32
728	psychedelic	46
729	quilt blocks	32
730	texture	34
731	texture	34
732	dot's dot	35
733	baby it's cold outside	28
734	dot's dot	35
735	plaids	38
736	ports of call	52
737	ports of call	52
738	java jive	46
739	sports/games	55
740	texture	34
741	texture	34
742	dot's dot	35
743	dot's dot	35
744	dot's dot	35
745	plaids	38
746	hearts a lot	54
747	tropical	40
748	camo	47
749	camo	47
750	bug out	48
751	kid prints	50
752	hearts a lot	54
753	hearts a lot	54
754	hearts a lot	54
755	sports/games	55
756	sports/games	55
757	sports/games	55
758	sports/games	56
759	sports/games	56
760	sports/games	56
761	sports/games	56
762	sports/games	56
763	sports/games	56
764	sports/games	56
765	petcetera	43
766	texture	34
767	texture	34
768	quilt blocks	32
769	quilt blocks	32
770	animal prints	31
771	animal prints	31
772	animal prints	31
773	animal prints	31
774	animal prints	31

#	CATEGORY	PAGE #
775	animal prints	31
776	petcetera	43
777	petcetera	43
778	petcetera	43
779	petcetera	43
780	petcetera	44
781	petcetera	44
782	petcetera	44
783	petcetera	44
784	petcetera	44
785	petcetera	44
786	petcetera	44
787	petcetera	44
788	camo	47
789	camo	47
790	camo	47
791	camo	47
792	petcetera	44
793	petcetera	44
794	petcetera	44
795	sports/games	56
796	sports/games	56
797	sports/games	56
798	sports/games	56
799	sports/games	56
800	ports of call	52
801	ports of call	52
802	ports of call	52
803	ports of call	52
804	skulls	29
805	skulls	29
806	skulls	29
807	skulls	29
808	floral	59
809	floral	59
810	floral	59
811	floral	59
812	dot's dot	35
813	dot's dot	36
814	dot's dot	36
815	dot's dot	36
816	skulls	29
817	skulls	29
818	skulls	29
819	skulls	29
820	plaids	38
821	plaids	38
822	plaids	38
823	plaids	39

#	CATEGORY	PAGE #
824	plaids	39
826	plaids	39
827	plaids	39
828	plaids	39
829	plaids	39
830	plaids	39
831	plaids	39
832	plaids	39
833	dot's dot	36
834	dot's dot	36
835	dot's dot	36
836	dot's dot	36
837	dot's dot	36
838	dot's dot	36
839	floral	59
840	floral	59
841	a girl's best friend	57
842	petcetera	44
843	psychedelic	46
844	floral	59
845	sports/games	57
846	sports/games	57
847	sports/games	57
848	sports/games	57
849	sports/games	57
850	camo	47
851	animal prints	31
852	floral	59
854	camo	47
855	sports/games	57
856	floral	59
857	floral	59
858	kid prints	50
860	ribbon awareness	60
861	ribbon awareness	60
862	ribbon awareness	60
863	ribbon awareness	60
864	ribbon awareness	60
865	ribbon awareness	60
866	ribbon awareness	60
867	ribbon awareness	60
868	ribbon awareness	60



Bar-Ray, LeadX and Econotank are registered trademarks of Bar-Ray Products, Inc.

© Bar-Ray Products 2012

PROUDLY MADE IN THE USA



ISO
9001
QUALITY
ASSURANCE



95 monarch street • littlestown, pa 17340, usa
toll free 800-359-6115 • phone 717-359-9100
fax 717-359-9109 • email info4barray@bar-ray.com

bar-ray.com

03-12

