

# EQUIPMENT

**HENRY SCHEIN**<sup>®</sup>  
MEDICAL

## In This Issue...

AEDs .....	2, 3, 11
Stress and ECG .....	2, 3, 8
Spirometry .....	2, 8
Blood Pressure Monitoring .....	2, 7, 12
Exam Tables .....	5, 6, 12
Patient Monitors .....	5
Cryo Procedures .....	5, 6, 13
Scales.....	7, 9, 11
Thermometry .....	9, 12
Dopplar .....	11
Imaging .....	13, 14
Lasers/Aesthetics .....	15
Laboratory.....	16, 22

## THE CONNECTED PRACTICE STARTS WITH

 **Allscripts**<sup>™</sup>  
**CONNECT NOW,  
PAY LATER!**

180,000 physicians already know the benefits of Allscripts:

- Reduce billing errors
- Receive reimbursements faster
- Increase patient bookings
- Improve productivity and efficiency
- Improve collaboration
- Enhance patient outcomes



**GUARANTEED  
ARRA-Certified**  
Take advantage of  
STIMULUS  
DOLLARS NOW!

### 1. The Right EHR    2. The Right Guarantee    3. The Right Price

Connect now, pay later! **\$0 for software for the first 6 months.**  
Then, pay for your solution with affordable monthly payments over time.



Contact your Henry Schein Sales Consultant  
Phone: 1-800-772-4346  
Email: [Allscripts@henryschein.com](mailto:Allscripts@henryschein.com)  
Visit: [www.henryschein.com/allscripts](http://www.henryschein.com/allscripts)

**HENRY SCHEIN**<sup>®</sup>  
**ConnectHealth**<sup>SM</sup>

**HENRY SCHEIN**<sup>®</sup>  
**LabTeam**<sup>™</sup>  
SOLUTIONS FOR CLINICAL LABS

Henry Schein offers a broad spectrum of quality choices for all your laboratory's needs. From equipment to specialized services, our goal is to provide the best solution at the right time in a cost-effective manner.

Henry Schein Medical serves single or group practices, reference laboratories, research institutes and governmental agencies.

Pages 16-22 of this Equipment Buyers' Guide showcase Laboratory products that will help to improve patient care and increase revenues in your office.

Ask your Henry Schein Sales Consultant about Laboratory opportunities in your practice and how our Clinical Lab Specialists can bring a Henry Schein Solution to you.



## HOLOGIC<sup>®</sup>

### Henry Schein offers the complete line of Bone Densitometers from Hologic<sup>®</sup>.

Osteoporosis is detectable and treatable. And, whether you are a large hospital or small office, testing is safe and non-invasive.

Hologic bone densitometry systems offer you a single platform to support a wide range of patients over a lifetime of care.



Ask your Henry Schein Sales Consultant how to incorporate bone densitometry into your clinical practice.

**HENRY SCHEIN**<sup>®</sup>  
Henry Schein, Inc. • 135 Duryea Road • Melville, NY 11747

PRSR STD  
U.S. POSTAGE  
**PAID**  
HENRY SCHEIN, INC.

To Order: 1-800-P-SCHEIN (1-800-772-4346) 8am-9pm (et)  
To Fax: 1-800-329-9109 24 Hours  
[www.henryschein.com/medical](http://www.henryschein.com/medical)

**Join Our Community**  
Join Us on Facebook | Follow Us on Twitter  
View Us on YouTube

[facebook](#) [twitter](#) [YouTube](#)



### Welch Allyn Connex® ProBP™ 3400

Small enough to carry everywhere, with the same accuracy as Welch Allyn industry-leading vital signs devices, the Connex® ProBP™ 3400 digital blood pressure device is a smart choice for just about every clinical setting. SureBP™ technology lets you take fast, accurate blood pressure readings in just 15 seconds, while USB-wired connectivity lets you send them straight to your EMR/HIS. Cuffs purchased separately. The ProBP™ 3400 is not intended for neonatal use.

ProBP™ 3400 With SureBP™ Thermometry and Bluetooth .....ea

Specify:  
Handheld, #34BFHT-B ..... (566-0231)  
Wall Mount, #34BFWT-B ..... (566-0236)  
Mobile Stand, #34BFST-B ..... (566-0240)

ProBP™ 3400 with SureBP™ Thermometry .....ea

Specify:  
Handheld, #34XFHT-B ..... (566-0229)  
Wall Mount, #34XFWT-B ..... (566-0233)  
Mobile Stand, #34XFST-B ..... (566-0238)

ProBP™ 3400 with Standard BP and Bluetooth .....ea

Specify:  
Handheld, #34BXHT-B ..... (566-0230)  
Wall Mount, #34BXWT-B ..... (566-0234)  
Mobile Stand, #34BXST-B ..... (566-0239)

ProBP™ 3400 with Standard BP .....ea

Specify:  
Handheld, #34XXHT-B ..... (566-0227)  
Wall Mount, #34XXWT-B ..... (566-0232)  
Mobile Stand, #34XXST-B ..... (566-0237)



### EasyOne™ Diagnostic Spirometry Systems and Accessories

Calibration Adapter and 10 Spirettes

Easy-to-use spirometer uses patented digital ultrasonic flow measurement technology for fast, accurate, and reliable operation.

- Ultrasonic flow measurement
- Single-patient-use spirette
- Alphanumeric keypad
- Graphic curve display
- Meets ATS 1994 diagnostic standards
- Meets NIOSH, OSHA, and SSD guidelines
- Automated coaching messages and QC
- Automated interpretation
- Stores up to 700 test sessions
- PC data transfer
- Toll-free technical support
- 3-year exchange warranty

Spirometer, with Calibration Adapter and 10 Spirettes

(409-7495) .....ea

Complete System (409-3035) .....ea

Contains: 1 diagnostic spirometer, 1 calibration, 10 spirettes, 1 cradle & 1 ink-jet printer.



Spirettes (409-5679) .....50/box  
(409-3230) .....200/box

Screen, with Screen Connector and EasyWare Software (409-1469) .....ea

Calibration Syringe, 3 Liters (409-1496) .....ea

Calibration Syringe Adapter (108-8642) .....ea



### Powerheart® AED G3 Automatic

Fully automatic AED that does not require the operator to push a shock button. RescueReady dependability with comprehensive daily, weekly, and monthly self-tests, including confirmation of battery, electrical circuitry, and software (weekly and monthly self-tests include partial- and full-energy charge of electronics, respectively). STAR® biphasic Waveform and RHYTHMx™ technology deliver customized, variable escalating energy protocol for maximum effectiveness, including synchronized shock. Noncommitted shock feature prevents the AED from delivering a shock if a patient's heart rhythm returns to normal while AED is charging in preparation for a shock.

#9300A-501PPC, With Monitor Package, AHA/ERC 2005 Guidelines Compliant

(110-2293) .....ea

Contains: 1-9146 battery, 2 pairs of adult defibrillation pads, 1 carrying case, 1 ready kit, 1 Quick Start tool kit CD (includes Quick Start guide, 1 operator & service manual, 1 training video, RescueLink & MDLink) & 1 serial-data-download cable.

Powerheart® Adult Defibrillation Pads (718-7703) .....ea



## The Quinton® Q-Stress® system. Now with Microvolt T-Wave Alternans™.

We invented modern stress testing more than 55 years ago.

- Freeze ECG during test to quickly identify arrhythmias.
- EMR connectivity via HeartCentrix®.
- Add Microvolt T-Wave Alternans™ to assess cardiac arrest risk.

Contact your Henry Schein Sales Consultant today.



Cardiac Science, the Shielded Heart logo, Quinton, and Q-Stress are trademarks of Cardiac Science Corporation. Microvolt T-Wave Alternans is a trademark of Cambridge Heart Inc. Copyright © 2010 Cardiac Science Corporation. All Rights Reserved. MKT-04299-01rA





## Cardiac Science™ CareCenter MD™ PC-based wireless diagnostic workstation

- + Wireless data acquisition for ECG and cardiac stress testing
- + One-button user navigation – simple user interface for all modalities
- + Advanced networking and connectivity – in your office, across the country, to your EMR
- + Shared database provides fast access to all patient files

Contact your Henry Schein consultant today.



Cardiac Science, the Shielded Heart logo, and CareCenterMD are trademarks of Cardiac Science Corporation. Copyright © 2010 Cardiac Science Corporation. All Rights Reserved. MKT-04145-01rA



### Powerheart® AED G3

Semiautomatic AED with RescueReady dependability for comprehensive daily, weekly, and monthly self-tests, including confirmation of battery, electrical circuitry, and software (weekly and monthly self-tests include partial and full-energy charge of electronics, respectively). STAR Biphasic Waveform and RYTHMx technology delivers customized, variable escalating energy protocol for maximum effectiveness, including synchronized shock. Noncommitted shock feature prevents the AED from delivering a shock if a patient's heart rhythm returns to normal while AED is charging in preparation for a shock.

#9300E-501PPC, with Display Package, AHA/ERC 2005 Guidelines Compliant (110-2294).....ea

Contains: 1-#9146 battery, 2 pairs of adult defibrillation pads, 1 carry case, 1 ready kit, 1 Quick Start tool kit CD (includes Quick Start guide, operator & service manual, training video, RescueLink & MDLink) & 1 serial-data-download cable.



#9300P-501PPC, with Option for Manual and Semiautomatic Modes AHA/ERC 2005 Guidelines Compliant with Nonrechargeable Battery (110-2296).....ea

Contains: 1-#9145 battery, 2 pairs adult defibrillation pads, 1 carry case, 1 ready kit, 1 Quick Start tool kit CD (includes Quick Start guide, owner's & service manual, training video, RescueLink & MDLink software) & 1 serial-data-download cable.



### Powerheart® AED G3 Pro Package

AED with 3 operating modes: manual, AED, and ECG. RescueReady dependability for comprehensive daily, weekly, and monthly self-tests, including confirmation of battery, electrical circuitry, and software (weekly and monthly self-tests also include partial- and full-energy charge of electronics, respectively). STAR Biphasic Waveform and RYTHMx technology deliver customized, variable escalating energy protocol for maximum effectiveness, including synchronized shock where patient waveform is available. Noncommitted shock feature prevents the AED from delivering a shock if a patient's heart rhythm returns to normal while AED is charging in preparation for a shock. Has voice, visual, and text prompts to guide user through the rescue process in a simple manner, based on the 2005 AHA/ERC guidelines for CPR.



### Cardiosens™ Resting Tab Electrodes by Cardiac Science™

- Premium tin construction provides excellent signal quality
- Latex-free
- A favorite among clinicians

Cardiosens™ Ultra II Premium Offers aggressive adhesion, fast signal stabilization, and high conductivity. (120-1455).....100/box

Cardiosens™ K Offers a hypoallergenic, karaya-gum-based adhesive for sensitive skin. (120-2188).....100/box

Cardiosens™ Advantage Features a unique, highly conductive narrow adhesive. (120-2289).....100/box



### Heartline® Electrodes by Cardiac Science™

- Provide high-quality data for virtually any cardiac application
- Ideal for both long-term monitoring and short-term diagnostic procedures

#007781, Oblong, DuraFoam, Wet Gel, 37mm x 53mm (120-2998).....30/pouch

#007778, Oblong, Comfort Tape, Wet Gel, 37mm x 53mm (120-2333).....30/pouch

#007784, SensaCloth, Pediatric, Solid Gel, 30mm (120-8783).....30/pouch



### Assurance 50® "Fade-Resistant" Papers

Single Channel, Red Grid Unique line of thermal recording media. Look and feel is similar to standard thermal charts, but difference is in acid-free base paper and patented chemical thermal coatings. Combination of these 2 elements works to deliver 50 years of ECG image life without worry or fading. Thermal chart contaminants such as UV light, PVC, alcohol, adhesive tape, and electrode creams are no longer of concern. No special care or handling is required. Guarantee clear, indelible original records, year after year.

#716-0233-00, 45mm x 150' Roll For Burdick EK-10, Elite, Elite II, and Medic 5 (120-3261).....ea

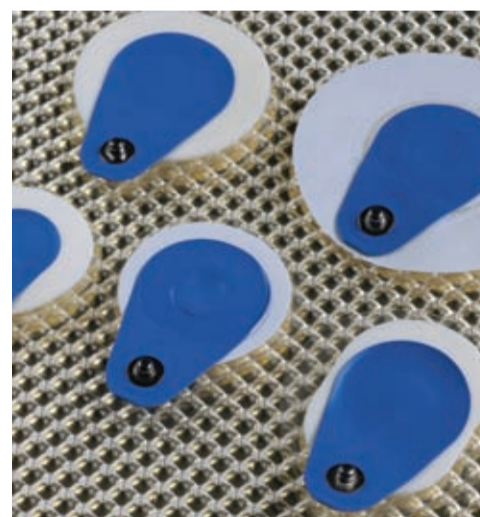
#716-0234-00 For E3501, E600 8, Eclipse LE I, LE II, and LEi (120-1579).....200 sheets/pkg



#716-0239-00 For Burdick Eclipse 850 and 850i (120-0410).....300 sheets/pad

#716-0237-00 For Atria, Burdick Eclipse Plus, and Quest (891-2720).....200 sheets/pad

#716-0235-00 For Burdick Eclipse 8 and 800 (120-1651).....300 sheets/pkg



### Blue Max™ Electrodes by Cardiac Science™

For Monitoring and Resting ECGs

- Highly conductive wet gel for clean tracings
- Minimal baseline wandering
- Unique offset snap connection reduces motion artifact during stress testing
- Specially formulated adhesive stays in place

#097001, Vinyl, Offset Snap, 40mm (120-4000).....25/bag

Foam, 30mm (120-9305).....10/pkg

#097002, Foam, Offset Snap, 50mm (130-9743).....25/bag

#015-0630-00, SUPAtab, Wet Gel (362-3376).....100/bag



### Professional Stethoscopes

- Single Lumen, Double Head
- Lightweight, comfortable, and affordable.
- Excellent acoustics and superior design for accuracy
- Stainless steel chest piece
- Comfort sealing ear tips conform to the shape of ear canals for soft, airtight fit
- Adjustable binaurals
- Latex-free, flexible PVC tubing

Pediatric (513-4858).....ea

Adult (101-4434).....ea

Shown in black; other colors available.



**BOVIE® SLEEP WELL PROMOTION APRIL 1<sup>ST</sup> - JUNE 30<sup>TH</sup>**



www.boviemed.com



*Contact your Henry Schein® Rep today...  
Sleep Well... You Bought A Bovie®!*

- ★ Purchase an Aaron® 1250 during the Sleep Well 2011 Promotion and you will receive a 5-year limited warranty<sup>‡</sup> (\$911.00 value<sup>##</sup>) on the unit and \$200.00 in **FREE** accessories\* — **Doctor's choice. TOTAL ADDED VALUE INCLUDED \$1,111.00\***
- ★ Purchase an Aaron® 950 during the Sleep Well 2011 Promotion and you will receive a 5-year limited warranty<sup>‡</sup> on the unit (\$602.00 value<sup>##</sup>), plus a second handpiece (\$118.00 value<sup>##</sup>), plus a box each of 100 non-sterile dermal tips—one blunt and one sharp, (\$101.00 value<sup>##</sup>) **FREE\***. **TOTAL ADDED VALUE INCLUDED \$821.00\***
- ★ Purchase an Aaron® 940 during the Sleep Well 2011 Promotion and you will receive a 5-year limited warranty<sup>‡</sup> on the unit (\$304.00 value<sup>##</sup>), plus a second handpiece (\$118.00 value<sup>##</sup>) **FREE\***. **TOTAL ADDED VALUE INCLUDED \$422.00\***
- ★ **TRADE-IN AND GET MORE!** Trade-in your current generator for a new Bovie® generator and **double your limited warranty<sup>‡</sup> to 10 years.**

*\* Doctor must purchase a promotional unit in order to qualify for free products. To receive free accessories, simply fill out and fax back the form enclosed with your unit.*

*‡ Standard limited warranty is two years.*

*## Suggested list price.*

Bovie® is a registered trademark of Bovie Medical Corporation.



### Smoke Shark™

Smoke and Particle Remover  
Designed to be easy to use and extremely effective at smoke and particle removal at the operative site. Although it is designed for use with all electro-surgical generators, it is also excellent for use in controlling laser smoke.

(869-0060) .....ea



### Smoke Shark™ Accessories

#S18, Filter, 18 Hours, Long Life (102-5207) .....ea

#786T, Tube, Non-sterile, 7/8" x 6' (611-4235) .....24/pkg

FSSE Foot Switch (493-1543) .....ea



### Disposable Electrodes

All use the standard 3/32 (2.3mm) stainless steel shaft. All molded electrodes feature safety grip insulators that combine patient and user safety with easy insertion into and removal from the surgical pencil. Packaged individually.

#A804, Sharp Dermal Tip, Non-sterile For use with 800, 900, and 950 models. (241-6402) .....100/box

#7-101-12, Blunt Tip, Non-sterile (271-2856) .....100/box



### Electrode Balls

#ES07, Extended, 5mm (984-5459) .....5/box

#ES20, 3/16" (682-5062) .....25/box



### Electrode Needles

#ES02, Standard (650-3112) .....25/box

#ES38, Modified (896-7227) .....25/box

Sterile Dermal Tips  
For use with #800, #900, and #950 models .....50/box

Specify:  
#7-101-8, Blunt ..... (590-1158)  
#7-100-8, Sharp ..... (891-3055)

#ES01, Standard Blade, Sterile (682-1876) .....50/box

#ES04, Extended Blade, Sterile (673-2611) .....25/box

#ES18, Angled Blade, Sterile (650-9472) .....5/box

#A806, Blunt Dermal Tip, Non-sterile For use with 800, 900, and 950 models. (590-9426) .....100/box

### WelchAllyn®

#### KleenSpec® 790 Disposable Vaginal Specula Illumination System

- Superior visualization: advanced LED light source provides better visualization of exam area by supplying brighter, whiter light where it is needed
  - Cordless and rechargeable: no cord to get in the way or break during procedures, continuous on-time of 80 minutes, recharge time of 6 hours, and lithium-ion battery technology; easily fits into vaginal speculum
  - Automatic On/Off: no more hassle with turning unit on and off; when Illumination System is inserted into vaginal speculum, it is automatically illuminated, and once it is removed, light goes off
  - Versatility: Illumination System can be used as an all-purpose light source on its own as well as with vaginal speculum
  - Convenient: no cords to clean; much less heat than traditional lamps
- #79900, Cordless Illuminator (108-6865) .....ea  
#79910, Cordless Illuminator with Charging Station (499-3429) .....ea



#79920, Cordless Illuminator with Charging Station and Auxiliary Power Cord (108-6501) .....ea

#73910, Charging Station for Cordless Illuminator (108-6866) .....ea

### WelchAllyn®

#### KleenSpec® 590 Vaginal Specula

- Unique, one-handed angulation and elevation mechanism provides multiple settings with positive locking positions for easy operation
- Operates smoothly throughout all ranges without binding or locking
- Provides superior illumination from its molded-in light carrier that transmits white, brighter halogen light to speculum tip and directly onto cervix
- Especially narrow blade width available for adolescent and geriatric patients
- Disposable for economy, safety, and convenience
- Individually wrapped

Specula .....box

Specify:  
#59000, Small, 24/box ..... (499-3427)  
#59001, Medium, 24/box ..... (499-7957)  
#59004, Large, 19/box ..... (499-9724)



Work more efficiently.  
Perform more procedures.  
Better manage your practice, and...

**Deliver More Advanced  
and Comprehensive Care  
with Welch Allyn products.**



Connex® ProBP 3400 Digital Blood Pressure Device    Spot Vital Signs® Device    Spot Vital Signs® LXi Device    Connex® Vital Signs Monitor 6000 Series    Propaq® LT Monitor    Propaq® CS Monitor

For more than 100 years, we've concentrated our efforts on designing products and solutions that help you take the focus off of the device you're using and put the focus where it should be—on your patient.

From basic diagnostic tools, to the state-of-the-art patient monitors and devices like the Spot Vital Signs® LXi, Propaq® LT patient monitor, and the Connex® Vital Signs monitor, we are confident that we can meet your needs with accurate and efficient products.

For more information, contact your local Welch Allyn representative today or visit [www.welchallyn.com](http://www.welchallyn.com).

**WelchAllyn®**

Advancing Frontline Care™

© 2011 Welch Allyn MC8082



**Classic Clinician**

These treatment tables are in a league of their own with an industry-leading 550-lb patient-load capacity. Procedures requiring both clinician and patient on the table at the same time are no problem for this solid performer.

Specifications:

- Maximum Operating Weight: 550 lb
- Base: Maple or Oak
- Tops: Rec., Rnd. Cnr., Backrest, Flex
- Padding: Plus, Semi-Firm, Firm
- Height Range: 20"-32"; 24"-36"
- Length: 73"
- Width: 27", 29", 31"
- Upholstery: TerraTouch™, Tufflex™

Rectangular Top-Shelf and Cabinet, Maple (625-0018) .....ea

Rectangular Top-Shelf and Cabinet, Oak (625-6790) .....ea

Rectangular Top-Shelf Only, Maple (625-0019) .....ea

Rectangular Top-Shelf Only, Oak (625-3519) .....ea

Rounded Corners and Cabinet, Maple (625-0022) .....ea

Rounded Corners and Cabinet, Oak (625-0023) .....ea

Rounded Corners, Shelf Only, Maple (625-0020) .....ea

Rounded Corners, Shelf Only, Oak (625-0021) .....ea

With Backrest Shelf Only, Maple (625-0024) .....ea

With Backrest Shelf Only, Oak (625-0025) .....ea

With Backrest Shelf and Cabinet, Maple (625-0026) .....ea

With Backrest Shelf and Cabinet, Oak (625-0027) .....ea

Flex Top Shelf Only, Maple (625-0028) .....ea

Flex Top Shelf Only, Oak (625-0029) .....ea

Flex Top Shelf and Cabinet, Maple (625-0030) .....ea

Flex Top Shelf and Cabinet, Oak (625-0031) .....ea

\*Some restrictions may apply.



**Multi-Specialty Exam Table**

Features:

- Electric height range: 22"-38" and reverse tilt: ± 15°
- Electric Fowler, central base, and locking system with hand control (height, Trendelenburg/reverse, and Fowler)
- Foot control (height only)
- Manual adjustable footrest with adjustable access and back support
- Retractable footrests (stirrups) and paper roll holder
- FDA listed, ETL approved, and CE marked
- 3-year warranty

(655-0001) .....ea



**Women's Imaging Table**

Features:

- Electric height range: 22"-38" with Trendelenburg/reverse tilt: ± 15°
- Electric Fowler, manual adjustable footrest, and hand control (height, Trendelenburg/reverse, and Fowler)
- Adjustable access/back support on right with retractable footrests (stirrups) and paper roll holder
- FDA listed, ETL approved, and CE marked
- 3-year warranty

Clay (115-5448) .....ea

## CRY-AC® and CRY-AC®-3 Liquid Nitrogen Delivery Systems



- Slender, fingertip trigger for maximal control and ease of viewing
  - Streamlined relief valve maintains constant operating pressure to ensure consistent and accurate freezing
  - Patented Safety Autovent maximizes safety by allowing internal pressure to gradually vent as cap is unscrewed
  - Durable Delrin® collar insulates user's hand
  - Sturdy Delrin base for extra stability
  - Stainless steel and brass construction for long life
  - 3-year warranty
- Systems .....ea  
Contains: 5 spray tips with varying sized apertures & 1-20-ga bent spray.

- Specify:
- #B-700, CRY-AC®  
16-fl-oz (0.5 liters) capacity.  
20-24-hr static holding time. (692-9317)
  - #B-800, CRY-AC®-3  
10-fl-oz (300 mL) capacity.  
10-12-hour static holding time. (692-2001)
  - Cryogun Tank, 16 oz (104-3003) .....ea
  - Family Practice Tank, Empty, 10 oz (692-8107) .....ea
  - Liquid Nitrogen Storage Container, 10 Liters (692-1604) .....ea
  - 300-Day Storage Container, 20 Liters (692-0281) .....ea

MIDMARK 630  
BARRIER-FREE POWER PROCEDURES TABLE



# Driven by Design

the two-thousand eleven "75" promotion

At Midmark, everything we do is driven by design. Whether it's in the design of the product or clinical space, making a positive difference in the well-being of the patient and the clinical workflow compels us to focus on even the tiniest details.

Purchase a 630 between March 1 – May 31, 2011, and receive your choice of one of the following from Midmark:

Care Exchange™ Cart  
AND  
Ritter 276 Air Lift Stool

**TOTAL PACKAGE VALUED AT \$1,789**

OR

Articulating Armboard  
AND  
Ritter 276 Air Lift Stool

**TOTAL PACKAGE VALUED AT \$1,613**

OR

Articulating Knee-Crutches  
AND  
Ritter 276 Air Lift Stool

**TOTAL PACKAGE VALUED AT \$1,459**

OR

**\$1,000 REBATE FROM MIDMARK**

For more information on the promotion, please contact your Henry Schein Representative, call **1-800-MIDMARK** or visit **midmark.com**.



**Brymill**  
Cry-Ac®Tracker®

The Cry-Ac®Tracker® is a device that measures the temperature of the skin when spraying liquid nitrogen via the Cry-Ac® delivery system to the selected skin lesion using the latest Infrared Sensing technology. The operator can set the Cry-Ac®Tracker® to indicate when a predetermined freeze temperature has been achieved at the lesion.

**For More Precise and Effective Cryosurgery**

- Consistently achieve desired skin temperature and freeze time
- More accurately perform cryosurgery
- Know how long to spray and when to stop
- Quickly train others to reliably do cryosurgery
- Achieve optimal results for patients
- **Temperature Monitoring**
- Infrared light sensor continuously and safely monitors skin temperature at freeze site
- Color-coded lights shine on lesion to indicate how fast skin temperature is decreasing and when desired skin temperature is reached

(112-3327) .....ea



**WelchAllyn**

**Green Series™ 300 General Exam Lights**

Utilizing a single white LED, the GS 300 provides a whiter, brighter light than halogen and consumes less energy. It's the perfect combination of intense light output and cool operation in a compact design. Features touchless on/off, multiple mounting options for floor space maximization, low cost of ownership due to elimination of bulb replacement and lower energy consumption, and 5-year limited warranty to include the LED light source and power supply.

With Mobile Stand  
(114-2692) .....ea  
With Table/Wall Mount  
(114-5632) .....ea



**WelchAllyn**

**Green Series™ 600 Minor-Procedure Lights**

Featuring 3 LEDs and a wider head, the GS 600 is designed specifically for demanding viewing conditions. Whiter, brighter, and greener: 3 white LEDs offer greater intensity. Other features include touchless power controls and an adjustable light output. It also has a disposable sheath available to help reduce the risk of infection due to cross contamination. Rugged, ergonomic design allows for improved performance and long-lasting durability. Low cost of ownership due to elimination of bulb replacement and lower energy consumption. 5-year limited warranty to include the LED light source and power supply only.

With Mobile Stand  
(566-0088) .....ea  
With Table/Wall Mount  
(566-0089) .....ea



**HENRY SCHEIN®**  
**ANEROID DELUXE BLOOD PRESSURE CUFF**

- Contemporary black enamel, 300mm-Hg, CE-marked, no-pin stop manometer provides day-in, day-out dependability
- Nylon cuff with proprietary Size Guide™ marking system prevents miscuffing
- Dip-molded latex inflation bladder withstands heavy use
- Chrome-plated brass air-release valve
- Leatherette carrying case with durable nylon zipper
- Assembled, inspected, and packaged in the USA from foreign components

Latex-Free .....ea  
Specify:  
Child..... (900-4838)  
Adult, Black..... (900-4837)  
Large Adult, Black..... (900-4839)



**HENRY SCHEIN®**  
**THE ESSENTIALS DUAL-HEAD SERIES SCOPE**

- Lightweight aluminum chest-piece construction
- Nonchill diaphragm rim for patient comfort
- Nonchill bell ring and diaphragm for patient comfort
- Proprietary diaphragm enhances acoustic response by 50% over traditional designs
- Combination diaphragm/bell chest piece for wide frequency response
- Diaphragm diameter 1 3/4"; bell diameter 3/4"
- Adjustable aluminum binaurals with PVC ear tips
- Flexible 22" PVC tubing
- Spare pair of black mushroom eartips included
- Inspected and packaged in the USA
- Choice of 4 tubing colors
- 1-year warranty
- Weighs 3.5 oz
- Overall length 32 1/2"

Latex-Free .....ea  
Specify:  
Black..... (900-4809)  
Gray..... (900-4810)  
Royal Blue..... (900-4811)  
Red..... (900-4812)



**Health o meter®**  
**Digital Two-Piece Platform Scale**  
#349KLX  
(322-9265).....ea



**Health o meter®**  
**Economical Digital Physician Scale**

- Capacity 500 lb/220 kg
- 1" LCD readout
- Functions: BMI, EMR capable, Hold/Release button, Auto-Off, Auto-Zero, LB/KG conversion, and Zero-Out/Tare
- Height rod
- Optional adapter, connectivity through USB
- Eye level

#500KL  
(106-6626).....ea



**Health o meter®**  
**Mechanical Beam Scale**

Maximum strength, steel base and lever system, rotating easy-to-read poise bars with engraved, long-lasting readings in pound/kilogram. Includes 2 counterweights to increase capacity to 500 lb/200 kg.

- Capacity: 500 lb/200 kg
- Rotating Dual-Read
- Optional wheels for easy mobility
- Engraved numerals
- Powder-coated scale: nonrust
- 10-year warranty

#402KL  
(120-1678).....ea

## Introducing the Onyx® II 9580 fingertip pulse oximeter.

The cost-effective routine vital-sign tool.

“The Nonin Onyx II gave me the most reliable results and stood up to wear and tear around the clock.”

– Darrick T., clinician and Nonin Onyx® II user



**NEW!**  
**LOW PRICE!**  
**\$199**

499-7254 Blue  
499-7255 Red  
499-7256 Purple

### Accuracy. Reliability. Peace of Mind.

Built for professionals and built to last, the new Nonin Medical Onyx II 9580 fingertip pulse oximeter provides proven accuracy from pediatric to adult patients.

- Industry-leading 4-year warranty
- Lead free, latex free and made in the USA

Learn more about the Onyx II 9580 and the clinical uses of pulse oximetry:  
[www.onyxpulse.com](http://www.onyxpulse.com)



©2011 Nonin Medical, Inc.



**Health o meter®**  
**Digital Pediatric Scales**

High-performance digital pediatric scale with motion-sensing technology to capture the weights of even the most active babies.

- Capacity 44 lb/20 kg
- Functions: Auto-Off, Auto-Zero, LB/KG conversion, and Zero-Out/Tare
- Measuring tape, 1" LCD readout (#553KL)
- #553KL additional functions: EMR capable and Hold/Release button
- Includes 6 AA batteries (#553KL); one 9V (#549KL)

#553KL  
(104-7675).....ea  
#549KL  
(110-0989).....ea



**Health o meter®**  
**Eye-Level Digital Scale with Height Rod**

High weighing capacity, low profile, large base, and user-friendly interface.

- Capacity: 500 lb x 0.2 lb (227 kg x 0.1 kg)
- 170° swivel display with 1 LCD
- BMI, RS232 port, wheels, handle, large 14 1/4" x 14 1/4" platform, and height rod
- 1-year limited warranty

(975-4610).....ea

**Health o meter®**  
**Digital Bariatric Platform Scales Pro Plus™**

- Capacity 700 lb/310 kg
- Platform: 15 3/4" x 22"
- 3/4" LCD with 180° swivel movement
- Functions: BMI, EMR capable, Hold/Release button, adjustable backlight, Auto-Off, Auto-Zero, LB/KG conversion, Zero Out/Tare, date/time display, updatable software, modular design, smart digital load cells
- 120 V adapter included; connectivity through USB

#1100 KL  
(111-5112).....ea



every customer every time.

## Current Promotion Now Running!

Whether you need one diagnostic device or a combination, we have a diagnostic product and program that's a perfect fit for you. Midmark – dedicated to meeting the needs of our customers.



### IQ Digital Diagnostic Products

- Lightweight and portable
- Intuitive user interface
- Connect seamlessly with select EHR/EMR or can be used as a standalone solution
- Designed to work in most IT environments

For more information, contact your Henry Schein Representative, call **1-800-MIDMARK** or visit [midmark.com](http://midmark.com).

Midmark Diagnostics Group 1125 W. 190th Street, Gardena, CA 90248  
1-800-624-8950 [info@midmark.com](mailto:info@midmark.com) [midmark.com](http://midmark.com)



## Privileges Rewards

RECEIVE UP TO  
**115,000**  
BONUS POINTS!\*

With our **PRIVILEGES PROGRAM**, we believe in rewarding our loyal customers with products and services that will help their business stay competitive and profitable, now more than ever. By using any of our electronic ordering solutions, **PRIVILEGES** members earn Rewards Points (one point for each dollar spent), which are automatically posted in your online **PRIVILEGES** Rewards account.

Visit your account often to check your points, browse the gift catalog, and redeem your points for thousands of brand-name gift items—including **FREE** travel and event tickets! You can reward an employee or redecorate your office with **PRIVILEGES** points!

Sign up now to start enjoying all the special attention and exclusive benefits that you deserve. Membership is **FREE!**

To enroll or learn more, speak with your Henry Schein Sales Consultant or visit [www.henryschein.com/privilegesmd](http://www.henryschein.com/privilegesmd)



As a **PRIVILEGES** member, you'll receive:

- **PRIVILEGES** Rewards Points for all electronic purchases
- Value Certificates to reduce your expenses and offer you the opportunity to earn Bonus Points
- **PRIVILEGES** monthly E-Promotions
- Exclusive quarterly E-Newsletters
- Access to our Practice Marketing Services
- Discounts on ProRepair Services throughout the year



EXCLUSIVE  
REWARDS FOR  
PREFERRED  
CLIENTS

**1.866.MED.VIPS**  
[www.henryschein.com/privilegesmd](http://www.henryschein.com/privilegesmd)  
[privilegesmd@henryschein.com](mailto:privilegesmd@henryschein.com)

To enroll or learn more, speak with your Henry Schein Sales Consultant or visit

[www.henryschein.com/privilegesmd](http://www.henryschein.com/privilegesmd)

**We do that!**<sup>TM</sup>



## WelchAllyn

### SureTemp® Plus 690 Electronic Thermometer

Combines the speed of ear thermometry with the accuracy and reliability of traditional oral thermometry. Takes fast, 4–6-second oral temperatures, 10-second pediatric axillary and rectal temperatures, and 15-second adult axillary temperatures.

- Accurate to within +/- 0.2°F (0.1°C)
- Interchangeable, removable probe wells to reduce the risk of cross contamination
- Large LCD that can display temperatures in Fahrenheit or Celsius
- Last-temperature recall
- Mode selection and recall buttons
- Four different temperature modes
- Convenient storage for 25 probe covers
- Takes about 6,000 readings on 3 AA batteries (included)

Thermometer, with Oral Probe, Well, and 4' Cord  
(203-3856) .....ea

Thermometer, with Wall Mount, Oral Probe, Well, and 4' Cord  
(178-8374) .....ea

Wall Holder Mount for Thermometer  
(206-8985) .....ea

Rectal Probe, Well, and 4' Cord  
(741-8045) .....ea



Oral/Axillary Probe, Well, and 4' Cord  
(120-2127) .....ea

Oral/Axillary Probe, Well, and 9' Cord  
(695-8954) .....ea

Probe Covers  
(108-4667) .....1000/box

## WelchAllyn

### SureTemp® Plus Thermometer Probe Covers

#05031-110  
(840-2661) .....250/box



## WelchAllyn

### Thermoscan® Pro 4000 Ear Thermometer

Offers speed and accuracy for all types of patients. Exclusive ExacTemp technology provides an active user feedback system to ensure proper positioning and improved accuracy.

- Improved accuracy and repeatability through a preheated probe tip and sensor
- Automatic probe cover eject button for quick and easy disposal of used probe covers
- Exclusive ExacTemp technology provides an active user feedback light, guiding proper probe positioning and improved accuracy
- Preheated probe tip minimizes cool-down effect experienced when taking repeat temperatures, improving both accuracy and repeatability
- Probe cover detection system improves accuracy by ensuring precise infrared heat transfer
- Innovative security features reduce the occurrence of theft in the hospital environment (only available with Base Station)

Thermometer  
(566-3430) .....ea

Thermometer, with Recharging Base Station  
(894-6722) .....ea

Thermometer, with Mobile Security Stand  
(566-3898) .....ea



Thermometer for Home Use  
(729-4760) .....ea

Rechargeable Battery Pack  
(566-9664) .....ea

Recharging Base Station and Probe Cover Refill Dispenser  
(854-4849) .....ea

## WelchAllyn

### Braun ThermoScan® Pro 4000™ Ear Thermometer Probe Covers

(678-2442) .....200/box



## DETECTO

### #438 Eye-Level Beam Scale

Features a height rod in inches and centimeters, and wheels in back for easy transport. Platform cover is easily removed for cleaning.

#438, with Wheels  
(545-8586) .....ea

#439, without Wheels  
(545-3857) .....ea

Pound/Kilo with Height Rod and Casters  
(545-0533) .....ea

Counterweight provides an additional 100 lb of capacity.  
(545-6822) .....ea



## DETECTO

### Flip-Seat Chair Scale

#6876  
(205-6183) .....ea



## DETECTO

### Baked Enamel Steel Step-On Cans

Each can, with epoxy polyester finish, features unitized construction, full-width hinges for long life, heavy-duty foot pedal and linkage system, self-closing lid, and bag-securing mechanism. Plastic protective molding hems bottom. "Biohazard" and "Infectious Waste" adhesive-backed labels included.

#P-24, 24 qt .....ea

Specify:  
Red ..... (545-2145)  
White ..... (545-3315)

#P-32, 32 qt .....ea

Specify:  
Red ..... (545-3427)  
White ..... (545-5228)

#P-48, 48 qt .....ea

Specify:  
Red ..... (545-5926)  
White ..... (545-6276)



## DETECTO

### Digital Baby Scale

- Capacity: 30 oz x 0.1 oz/15 kg x 0.005 kg
- Tray size: 28" W x 12.1888" D/66cm x 31cm
- Power source: 6 C-cell batteries
- Display: 6-digit, 7-segment 1"/25mm high transreflective LCD
- Shipping weight: 25 lb/11 kg

(832-0100) .....ea



## DETECTO

### Eye-Level Digital Physician Scale

- Capacity: 400 lb
- Tray size: 10½" x 14½"/267mm x 368mm
- Power source: 6 C alkaline or nickel-cadmium cells (not included) or optional AC adapter
- Display: 0.7" high-contrast LCD
- Shipping weight: 38 lb/17.2 kg

#6439  
(953-1460) .....ea





## UNICO Rock-IT™ Blood Tube Rocker

A versatile rocker for hematology (blood) tubes prior to counting; also excellent for vials and gentle mixing of injectables. Nearly silent while gently completing 25 mixing cycles per minute. Platform is designed for 15 tubes and has a reversible pad that can be autoclaved. 1-year warranty. Dimensions: 13.7" x 4.7" x 5"

#L-TTR200, 15 Place  
(715-2650).....ea



## UNICO Colpo-Master™ I Colposcope

With 3 Legs  
• Binocular head with continuous zoom (3.5X–24X)  
• Dual diopter adjustment  
• Articulating swing-arm head mounting  
• Mobil 3-leg base with locking casters  
• Quartz halogen fiber-optic illumination with intensity control and green filter

(110-0501).....ea



## UNICO Rock-IT™ Jr. Blood-Tube Rocker

A versatile rocker for hematology (blood) tubes prior to counting; also excellent for vials and gentle mixing of injectables. Nearly silent while gently completing 25 mixing cycles per minute. Platform is designed for 8 tubes and has a reversible pad that can be autoclaved. 1-year warranty. Dimensions: 8.6" x 4.7" x 5"

#LTTR100, 8 Place  
(159-0730).....ea

## UNICO Colpo-Master™ II Center-Post Colposcope

• Binocular head with continuous zoom (3.5X–24X)  
• Dual diopter adjustment  
• Center-post mount  
• Quartz halogen fiber-optic illumination with intensity control and green filter

(110-0506).....ea



## UNICO PowerSpin™ LX Centrifuge

Spin blood, urine, fecal materials, or semen at the best speed for each type of specimen with this powerful, variable-speed, 6-place centrifuge. Maintenance-free, brushless motor runs quietly at a fixed speed up to 4000 rpm, emitting only 58dB, all with low-temperature rise. Suction-cup rubber feet hold unit firmly in place and virtually eliminate vibration. Lid features a gasket to reduced aerosol emission, a window for strobe speed check, and a safety interlock switch that cuts power to the motor if lid is raised. Angled rotor accepts 2–10-mL tubes (maximum tube size 16mm x 110mm). Accessories available upon request: 8-place rotor and pediatric tube adapters.

• Speed range: 300–4000 rpm, generating up to 1850 RCF (g)  
• 30-minute timer  
• 1-year warranty  
• Dimensions: 10.2" x 11.8" x 7.9"  
• Weight: 15 lb  
• 115 V/60 Hz

#C-856, Variable Speed, 6 Place  
(715-2656).....ea

## UNICO

### IP730 Series Microscopes

Designed to provide crisp, clear imaging on a versatile and ergonomic platform. Available with 30° inclined binocular or trinocular heads. Features Seidentopf optical design with 55mm–75mm interpupillary distance adjustment. Both heads rotate 360° and lock in place with a thumbscrew. Eyepieces are standard with 10X 22mm extra-wide field eyepieces for viewing comfort and clarity.

#IP730, Advanced Binocular Microscope, Achromat Objectives: 4X, 10X, 40X, 100X Achromat (106-9122).....ea

#IP730PL, Advanced Binocular Microscope, Plan Objectives: 4X, 10X, 40X, 100X Plan Illumination: 6 V/20 W Halogen

(109-9806).....ea



## UNICO

### PowerSpin™ FX Centrifuge

Features a 6-place angled rotor designed for 2–10-mL tubes (maximum tube size up to 16mm x 110mm) and a fixed speed of 3400 rpm, generating 1350 RCF (g) for superior specimen separation. Set the 0–30-minute timer to desired run length.

• Maintenance-free, brushless motors run quietly at a fixed speed of 3400 rpm, emitting only 58dB, all with a low temperature rise  
• Suction-cup rubber feet hold unit firmly in place while virtually eliminating vibration  
• Lid features a gasket to reduce aerosol emissions, a window for strobe speed checks, and a safety interlock switch that cuts power to motor if lid is raised  
• Accessories available on request: 8-place rotor and pediatric tube adapters  
• 1-year manufacturer's warranty  
• Dimensions: 10.2" x 11.8" x 7.9"  
• Weight: 15 lb  
• 115 V/60 Hz

#C806, Fixed Speed, 6 Place  
(715-5981).....ea



## Buy any EZ Autoclave...



### Closed Door System Fully Automatic Autoclaves

■ Hepa Filtered Air Drying ■ Cassette Capacity 3 large + 3 small

**EZ Models come with a 2 Year Parts and Labor Warranty**

## ... And the choice is yours!

A  
\$682  
Retail  
Value



**\$400**  
Manufacturer's Rebate

OR



**Free Ultrasonic**  
(with ss basket)

Buy any EZ autoclave from April 1 thru June 30, 2011 and get your choice of a FREE 1 gallon Ultrasonic or a \$400.00 manufacturer's rebate. To redeem this offer send a copy of your Henry Schein invoice (indicating your choice of the free Ultrasonic or Rebate) to: Tuttnauer USA, Att. EZ PROMOTION, 25 Power Drive, Hauppauge, NY 11788. The EZ autoclave serial number must be included on the copy of your invoice. Redemption deadline is July 25th, 2011. Please allow 4 weeks for receipt of rebate or shipment of free goods.

Tuttnauer USA Co. Ltd., 25 Power Drive, Hauppauge, NY 11788  
Tel: (800) 624 5836, (631) 737 4850, Fax: (631) 737 0720  
Email: info@tuttnauerUSA.com, www.tuttnauerUSA.com

**Tuttnauer**  
Your Sterilization & Infection Control Partners

**Has seca re-invented**  
weighing and  
measuring?



360°



**new**

**seca 284**

Wireless measuring station  
for height and weight

Capacity: 660 lbs / 300 kg  
Henry Schein 2760007



**seca 703**

Wireless column scales with  
capacity up to 550 pounds

Capacity: 550 lbs / 250 kg  
Henry Schein 6005578



**seca 374**

Electronic baby scales with extra  
large weighing tray

Capacity: 44 lbs / 20 kg  
Henry Schein 8243615

The new seca 360° wireless network:

Imagine: data wirelessly transmitted and printed  
immediately. Enjoy the convenience of paper -  
less and error-free transmission of measurements  
with our seca 360° wireless products – and save

valuable time. For you and your patients. Discover  
more about this system, our whole product range  
and seca, the world's market leader for medical  
weighing and measuring, at [www.seca.com](http://www.seca.com).

**HENRY SCHEIN®**

Toll free +1 800 542 7322 • Fax +1 888 705 7397 • [info.NLIII@seca.com](mailto:info.NLIII@seca.com) • [www.seca.com](http://www.seca.com)  
North America East • seca corp. • 7240 Parkway Drive, Suite 120 • Hanover, MD 21076 USA  
North America West • seca corp. • 13601 Benson Avenue • Chino, CA 91710 USA

**seca**  
Precision for health

**ZOLL**  
Advancing Resuscitation. Today.™

**AED Pro® Automated External Defibrillator**

This external defibrillator provides advanced capabilities for BLS and ALS users with innovative Real CPR Help® technology for rate and depth of chest compressions. The See-Thru CPR® capability filters CPR chest compressions, displaying the underlying cardiac rhythm. The AED Pro is unmatched in its ruggedness and durability and is ideal for any environment.

- Available as semiautomatic only or semiautomatic with manual override for ALS professionals
- Built-in internal memory and external USB memory technology allows expanded data storage capacity and maximum flexibility for data management and transfer
- Electrodes and battery compatibility with ZOLL M Series®, E Series®, and R Series® professional defibrillators
- ECG monitoring with 3-lead cable and high-quality display
- Unrivaled battery options (long-life disposable or rechargeable) that meet specific needs

(869-6270) .....ea



**ZOLL**  
Advancing Resuscitation. Today.™

**ZOLL AED Plus®**

Bringing Lifesaving Defibrillation to Everyone

The only AED with CPR feedback and an ECG waveform. By supporting CPR as well as defibrillation, this device can help every unresponsive victim. Features Real CPR Help®, a tool that is able to actually see what user is doing and provides audio and visual prompts to help them do it with confidence and clarity.

- Provides a one-piece electrode for accurate placement
- Uses consumer lithium batteries that are easy to replace, long-lasting, and inexpensive

(866-7559) .....ea



Summit Doppler

**LifeDop™ Dopplers and Probes**

Offers great sensitivity, a recording option, and superior sound. Long-lasting battery saves money. Comfortable, easy-to-hold probes. Very durable.

- Large, easy-to-read LCD and technically advanced software display extended 50–220 bpm heart rate as well as remaining battery life, signal quality, and probe identification; available in both display and nondisplay units
- Built-in Audio Recorder LifeDop™ is the first Doppler to feature a built-in solid-state recorder; records up to 32 seconds of Doppler sounds (nonrecording Dopplers also available)
- Quality speaker and audio processing for superior sound
- Improved battery management design to reduce frequency of battery charges

#L150R, Nondisplay Doppler, with Recharger

(118-8427) .....ea

#L150A, Nondisplay Doppler, with Audio Recorder

(118-8694) .....ea

#L250, Display Doppler, Basic Model

(118-3501) .....ea

#L250AR, Display Doppler, with Recharger and Audio Recorder

(118-9924) .....ea

Probes .....ea

Specify:

#P200, Obstetrical, 2MHz  
Optimized for deep penetration. (118-6433)

#P300, Obstetrical, 3MHz

For early fetal heartbeat detection and overall use. (118-2758)

#P800, Vascular, 8MHz (118-9695)

One probe is included with purchase of doppler. Specify choice when ordering.



### Digital Basal Thermometer

Whether using it as a tool for natural family planning or to better understand the fertility cycle, this thermometer provides readings with accuracy within 1/10 of a degree. Waterproof. Latex-free.

(151-2563) .....ea

Contains: 1 clear storage case, 5 probe covers, 1 replaceable 1.5-V battery & 1-12-month supply of ovulation charts.



### Margo Moo™ Compressor Nebulizer

Great for pediatrics, the whimsical, barn-style carrying bag safely totes the compressor and stores all accessories in a fun yet functional way.

- Particle size range: 0.5µm to 10µm
- Maximum pressure: 36 psi
- Compressor flow: 6-8 lpm
- Unit size: 7" x 7¾" x 4½"
- Unit weight: 3.6 lb

(151-0010).....ea



### Precision™ Series Aneroid Sphygmomanometer—Adult

Economically priced aneroid includes standard air-release valve, inflation bulb, nylon calibrated cuff, and zippered carrying case. 10-year calibration warranty on gauge. Cuff size: 11"-16.4". Cuff color: blue.

(151-0300) .....ea



### RediScan™ Infrared Thermometer

Professional accuracy and wide-range readout: 50°F-122°F (person) and 32°F-221°F (object/liquid). Features the Nite-Glo display and automatic shut-off, 1-second readout, °F/°C, peak-temperature tone, 100.4°F fever alarm, 10-memory recall, and 5-year limited warranty. Comes with a drawstring storage pouch and 2 AAA batteries.

(114-2518).....ea

MABIS DMI  
A Briggs Company

Your Source for SUPERIOR HEALTH CARE PRODUCTS



Digger Dog™ Compressor Nebulizer



Ultra Digital Arm BP Monitor



All-in-One EMT Kit with Dual Head Stethoscope



RediScan™ Infrared Thermometer

## Clinton Power Tables

Designed and engineered to make it easy on both attendant and patient, Clinton products offer power and durability.

**And Clinton's low height design may help qualify for the Federal ADA tax credit\*.**

Visit Clinton's web site at [www.clinton-ind.com](http://www.clinton-ind.com) for our full line of power tables and medical equipment plus complete specifications.



### Clinton Power tables feature:

- Pneumatic backrest, adjustable from either side/raises to 80° from flat position
- All welded steel base and top frame
- Hands-free foot control
- Shrouded models feature textured ABS plastic that encloses lift mechanism
- Optional locking casters available
- 450 lbs. load capacity under normal use

81200  
Shrouded Power Table with Adjustable Backrest

85300  
Power Imaging Table with 3 Section Top and 10" x 10" Window Section

81330  
Shrouded Power Table with Adjustable Backrest & Drop Section



Examine Real Quality™

[www.clinton-ind.com](http://www.clinton-ind.com)

\*Check specific ADA requirements and consult your tax advisor to make sure you qualify.

## Elemanno™ Blood Pressure Monitor

So Accurate.  
So Easy.

The ELEMANO® Blood Pressure Monitor is the only monitor that combines gold standard accuracy with digital ease of use.

- Rapid BP and pulse readout in 30 seconds
- Accurate, automatic BP readout to ± 3 mmHg
- Encourages standardized measurements with multiple users
- No stethoscope required

To learn more visit: [www.elemano.com](http://www.elemano.com)

ELEMANO is a trademark of Terumo Medical Corporation, Somerset, N.J.  
Ⓞ and Terumo are registered trademarks owned by Terumo Corporation, Tokyo, Japan. © 2010



TERUMO MEDICAL PRODUCTS



ImagePilot exemplifies the true meaning of an integrated digital radiography system. It combines patient registration, CR acquisition, distributed workflow, image review, and long-term storage in one easy to use and maintain system. These advanced features meet private practice workflow needs and eliminate the need for a separate PACS.

Contact your Henry Schein Representative to learn more.



## ImagePilot

The Original All-in-One Digital Radiography Solution

KONICA MINOLTA



### TuffSat® Handheld Pulse Oximeter

Designed for superior portability, this handheld pulse oximeter fits in your pocket or is conveniently worn using the included carrying case with belt clip.

- Increased validity of SpO<sub>2</sub> and pulse rate data using PIR (relative perfusion index measurement)
- Exceeds international durability standards
- Lightweight, ergonomic design provides simple, one-handed operation
- Rubber grip offers secure handling
- Water resistant for optimal protection in all conditions
- Excellent visibility in all light conditions with large, backlit, easy-to-read LCD display
- 3-year warranty

Yellow  
(797-2663) .....ea  
Blue  
(106-9460) .....ea



### CryoPen Cryosurgery System

Provides a means of freezing tissue without using cryogenic liquids or gases, such as liquid nitrogen, carbon dioxide, or nitrous oxide. The system consists of handheld freeze modules, a refrigeration unit, and reusable tips. It is designed to ablate tissue by applying an extremely cold temperature. Indications for use include multiple organ systems, wide range of disease, viral, premalignant, and malignant tissue.

Small Unit  
(114-4220) .....ea



## Purchase the Hysteroscope below with either Sheath...



**BR970-2930-302** (115-7714)  
Hysteroscope with Fiber Light Guide, direct vision, 30°, autoclavable, Ø 2.9mm

**BR975-2730-205** (112-4716)  
Hysteroscopy Sheath for Ø 2.7/ 2.9mm 30° scope, 5 FR working channel, continuous flow with comfort grip handle

**BR975-2730-210** (826-3049)  
Hysteroscopy Sheath for Ø 2.7/ 2.9mm 30° scope, 5FR working channel, continuous flow, single piece sheath with replaceable stopcocks, 210mm working length, 5.5mm Ø

## and receive one of the Graspers below FREE

**BR980-7010-005** (154-9308)  
Flexible Scissors, semi-rigid, single action, 5FR x 40cm

**BR980-7013-005** (198-2848)  
Flexible Grasping Forceps w/ serrations, double-action, 5FR x 40cm

**\$695**  
VALUE

## Purchase 2 boxes of the Hysteroscopy Kit below and receive 1 box FREE Qty. 5/Box

**BR980-9510 or HS#144-0282**  
Disposable Hysteroscopy Distension Tubing Set with Syringe and Tray

### EACH KIT CONTAINS:

60cc Syringe 1  
24" Distension Tube with Luer Connectors 1  
Tray (for distension fluid) 1



Quick, Simple, Economical Distension • Great for Ablations & Diagnostic Hysteroscopy!

Call your Henry Schein Rep today and take advantage of these two special deals.



### OAE Hearing Screener

Precisely and objectively screen for hearing loss in newborns, infants, toddlers, preschool and school-age children in just seconds.

- Fast, noninvasive early detection of hearing loss using an accurate, objective test for screening children in as little as 10 seconds
- Nozzle profile tip to eliminate cerumen (earwax) from clogging probe; successful test results; reduces service/repair
- Color-coded disposable eartips (4 sizes) will easily seal ear canal
- Reimbursement using CPT Code 92587 (~\$50) for Evoked Otoacoustic Emissions
- Storage of 10 tests (5 sets of ears)
- Lithium ion battery will last over a 12-hour period without recharging
- Label printer provides PASS/REFER interpretive results of both ears
- Option to purchase extended 1-year warranty available
- Ability to download to ASCII file to manage patient test electronically

#29400, Hearing Screener Set (Includes Printer) (462-8698) .....ea Call  
#29420, OAE Ear Tip Sampler Pack (Newborn, Infant, Pediatric, and Adolescent) (603-4610) .....20/pkg \$56.99



#29422, Ear Tips, Newborns (901-5040) .....100/bag \$99.99  
#29424, Ear Tips, Infant (186-8084) .....100/bag \$99.99  
#29426, Ear Tips, Foam, Pediatric (403-5776) .....100/bag \$99.99  
#29428, Ear Tips, Foam, Adolescents (119-2414) .....100/bag \$99.99  
#29440, Hard Carrying Case (Optional) (657-0025) .....ea \$149.99  
#29402, OAE Ear Probe (108-5525) .....ea Call

### Easy One-Step Automatic Blood Pressure Monitor

Easy-to-use, fully automated blood pressure monitor features a 60-Memory Recall, Irregular Heartbeat detection, and a Pressure Rating Indicator with one-button operation. Clinically validated for professional accuracy, and carries a 5-year warranty. Includes medium-size cuff.

#UA-631, Easy One-Step BP Monitor (609-0010) ..... \$49.99



## Henry Schein brings the ACUSON Family of Siemens products to your clinical practice



### ACUSON X300™ ultrasound system, premium edition (PE)

Take full advantage of the broad range of capabilities this product offers, including Abdominal, Cardiac, Stress Echo, Vascular, OB/GYN, Urology, and Superficial/Small Parts imaging.

- The all-around performer, designed to address the diverse needs of any practice
- Ergonomic features facilitate ease of use in small spaces
- Highly configurable reporting package created specifically for the office environment



### ACUSON X150™ ultrasound system

Ideal for general scanning including Abdominal, OB/GYN, Urology, and Superficial/Small Parts imaging. A scalable product designed to grow with your practice.

- Add powerful, advanced features at any time, as your clinical needs evolve
- Ultra-compact with an intuitive, easy to learn interface
- Highly configurable reporting package created specifically for the office environment



### ACUSON Cypress™ cardiovascular system PLUS

A comprehensive cardiac and vascular ultrasound system in a small, hand-carried package ideal for the office environment.

- Supports adult and pediatric echocardiography, Stress Echo, and Peripheral and Abdominal Vascular imaging
- Easily carried from room to room or office to office
- Network connectivity with CypressViewer™ ultrasound software provides a cost effective solution for offline review on a PC

**SIEMENS**

## HOLOGIC®

### Henry Schein offers the complete line of Bone Densitometers from Hologic®.



Studies show **55% of women over 50 have osteoporosis** or low bone mass. If you had the capability to test patients in a matter of minutes, how many patients could be tested per day?

Bone Density testing is **safe, noninvasive and easy to do** in your office. Great reimbursement rates make osteoporosis assessment very attractive and important for your patient care.

*Your Henry Schein Sales Consultant can schedule our Imaging Equipment Specialist to help you evaluate bone density testing.*

# Alma Lasers™



For all the most popular and in-demand laser and aesthetic treatments, Henry Schein offers Alma Lasers to provide the reliable, safe and effective results for your patients. Count on **Alma Lasers** for visibly dramatic improvements with minimal discomfort and downtime.

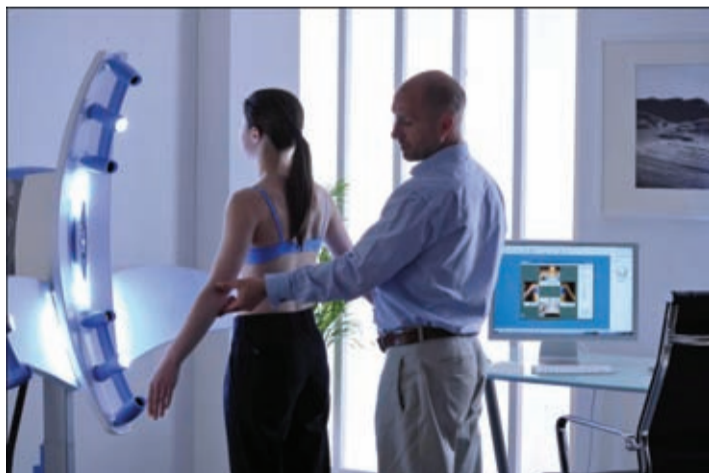


- Fractional Skin Rejuvenation
- Skin/Photo Rejuvenation
- Skin Tightening
- Vascular and Pigmented Lesions Treatments
- Acne Treatments
- Pain-Free Hair Removal
- Treatment for Leg Veins
- Psoriasis, Vitiligo, Stretch Marks, Hypopigmentation Treatment
- Tattoo Removal
- Wrinkles and Acne Scar Treatment
- Pain Relief
- Body Contouring and Treatment of Lax Skin
- Fractional CO<sub>2</sub> Skin Rejuvenation

**Call your Henry Schein Sales Consultant!**

## axisthree ...beyond imagination

If a picture is worth a thousand words ...  
What is a 3D image worth?



The XS400 3D Imaging Scanner from Axis Three for face, body and breast imaging

Let the Axis Three 3D Imaging System drive your consultation process. The Axis Three 3D system provides fast, accurate images that will make your consultations more productive. Our easy to use software suite allows you to communicate to your patient using her body to visually set proper expectations and remove objections.

- Set realistic expectations
- Stand out from the competition
- Increase conversions
- Enhance the patient experience

Learn more at [www.axisthree.com](http://www.axisthree.com)



## axisthree ...beyond imagination

## The perfect pair for testing diabetic patients.

HbA1c and Microalbumin are both available for point-of-care (POC) testing.

Answers for life.

Ask your Henry Schein Representative about Promotional Bundles for DCA and Clinitek!



### The perfect pair (HbA1c & Microalbumin for POC testing):

- Perform quantitative urine microalbumin, creatinine, and albumin-to-creatinine ratio tests, and CLIA-waived HbA1c for managing diabetes on one analyzer: the DCA Vantage® analyzer
- The DCA Vantage analyzer has over 15 years of proven performance in the point-of-care (PoC) testing segment and over 100 peer reviewed articles to provide confidence in test results
- As another option, the CLINITEK Status® analyzer can provide a CLIA-waived, semi-quantitative urine microalbumin, creatinine, and albumin-to-creatinine ratio result, in about a minute
- You can use both the DCA Vantage and the CLINITEK Status analyzers in CLIA-waived offices for monitoring the HbA1c and microalbumin levels of patients with diabetes, as recommended by the ADA

# SIEMENS

Order No. A91DX-0701454-UC1-4A00 | Printed in USA | © 2010 Siemens Healthcare Diagnostics Inc.

[www.usa.siemens.com/diagnostics](http://www.usa.siemens.com/diagnostics)



# SIEMENS

## IMMULITE® 1000

The IMMULITE 1000 immunoassay system features an extensive menu, ease of use, reliability, robust hardware and excellent assay performance. The IMMULITE 1000 monitors onboard reagents and accommodates onboard dilutions, positive sample identification, and Remote Diagnostics.

Worldwide, IMMULITE 100 has been chosen for various types of immunoassay testing due to their flexible platforms, breadth of menu, ease of use, reliability, high-performance assays and fully integrated operation. Assays for cardiac biomarkers, thyroid function, reproductive endocrinology, infectious disease, TDM, serology, anemia, drugs of abuse, diabetes, tumor markers and esoterics are all easily run with true random access capability.

Turbo capabilities provide results in 15 minutes for critical STAT assays including the cardiac biomarkers Troponin I, CK-MB, and Myoglobin, as well as Intact PTH and hCG.

The IMMULITE 1000—designed to meet the immunoassay testing needs of the clinical laboratory today and tomorrow.

Your Henry Schein Sales Consultant can provide your best Immunoassay solution from Siemens and your best finance options through Henry Schein Financial Services.

Contact your Henry Schein Sales Consultant for a customized solution for your practice.





### LeadCare® II Analyzer

Accurate, On-the-Spot Lead Testing

- Perform blood-lead measurements with only 2 drops of blood
- In-office immediate results in 3 minutes
- Accuracy and sensitivity of a reference lab test (from capillary or venous blood sample)
- Two-drop sample size requires only a finger stick; allows combination of LeadCare II with other tests
- CLIA-waived, reimbursable test

Analyzer (106-4441).....	ea
Test Kit (106-5736).....	48/box
#70-3440, Lead Control (707-3252).....	ea
#70-3447, Printer Lead Analyzer (106-7328).....	ea
CPT® Code: 83655†	



### HITACHI Inspire the Next CLA-1™ Luminometer

This compact luminometer automatically prints a complete report that lists the tested allergens and the severity of the patient's response to each. Easy to use, the system is the simplest, quickest, and most convenient allergy testing method available today. It can analyze up to 180 allergens in 8 minutes.

#905013 (680-1614).....	ea
----------------------------	----



### UNICO® G380 Microscope

Designed for viewing comfort, this microscope provides crisp, clear imaging on a versatile, ergonomic platform. Available in a variety of optics choices and body configurations. Standard 10X High Eye-Point eyepieces are engineered to reduce eyestrain for users who wear glasses. Each eye tube features independent focusing diopter adjustment to compensate for the natural vision differential between each eye. Base design adds stability to the body and allows extra room for hand access to the oversized coarse-focus and fine-focus controls and easy access to the coaxial mechanical stage controls.

(281-4869).....	ea
Contains: dust cover & 2 extra fuses.	



### i-STAT® 1 Handheld System

Performs a comprehensive panel of critical tests. Utilizing self-contained test cartridges, along with the Precision PCx™ and Precision PCx Plus™ glucose test strips, the i-STAT 1 system delivers lab-accurate testing for blood gases, electrolytes, chemistries, coagulation, hematology, glucose, and cardiac markers (cTnI). It is portable and reliable.

Includes these important features:

- Easy to use: Cartridges are self-contained and the system is simple to learn and operate
- Lab-accurate results: Advanced biosensor technology and real-time quality assurance provide extremely accurate testing
- Small sample size: Just a few drops of blood per cartridge
- Ready when you need it: Test results in as little as 2 minutes

i-STAT Analyzer (111-3324).....	ea
Cartridges Chem8+ (waived) (111-3408).....	25/box
Creatine (waived) (111-3394).....	25/box



PT (111-3385).....	24/box
BNP (111-3158).....	25/box
Accessories i-STAT Serial Recharger (111-3403).....	ea
i-STAT Serial Downloader (111-3401).....	ea
i-STAT Printer Paper (111-3398).....	6/box



### Piccolo® Point-of-Care Chemistry Analyzer Accessories

The first broad-menu clinical chemistry analyzer designed for near-patient testing. *Basic Panel* contains BUN, Ca, Cl-, CRE, GLU, K+, Na+, and tCO<sub>2</sub>.

*Comprehensive Panel* contains ALB, ALP, ALT, AST, BUN, Ca, Cl-, CRE, GLU, K+, Na+, TBIL, tCO<sub>2</sub>, and TP. *Lipid Panel* contains CHOL, CHOL/HDL (calculated), HDL, LDL (calculated), TRIG, and VLDL (calculated).

- General chemistry, liver, electrolyte, BMP, CMP, lipid, renal, and hepatic panels available
- No daily controls, calibrators, or maintenance
- Intelligent Quality Control (iQCT) verifies correct performance
- No special training required
- 0.1cc whole blood, serum, or plasma
- Single-use reagent discs
- Compact and portable
- Built-in QC and calibration
- Lipid panel is CLIA waived
- Whole blood, serum, or plasma
- Less than 2 minutes hands-on
- Results in under 13 minutes



#100-0000, Accessory Kit (106-6368).....	ea
Contains: 1-0.1cc Minipette, 1-96-pack of disposable Minipette tips, 1 operator's manual, training CD, 1 power cord, 1 power supply, 10 lithium-heparin tubes, 1 screwdriver & 2-12-packs of results cards.	
#400-0024, Basic Metabolic Panel (137-3987).....	10/box
#400-0028, Comprehensive Metabolic Panel (174-6978).....	10/box
#400-0025, Lipid Panel (146-0189).....	10/box



### Glucose 201 Analyzer

The HemoCue Glucose Systems are based on a glucose-dehydrogenase method and consist of a small, dedicated analyzer and a unique, disposable microcuvette. They will produce lab-accurate results for diagnosing or monitoring diabetes, as well as monitoring neonatal blood glucose levels.

- More accurate and 68% higher reimbursement than glucose meters
- FDA-compliant unit when screening and diagnosing
- Analyzer: 0–444 mg/dL (0–24.6 mmol/L)
- Only 5 µL of capillary, venous, or arterial blood is needed
- No inherent limitations related to hematocrit or known drug interferences
- No recalibration needed between cuvette lots
- 2-year warranty

- #120706, Analyzer (104-2290) .....ea
- #110706, Microcuvette, Glucose (439-9158).....100/box
- #110402, Microcuvette, Glucose (609-2005) .....100/case



### CoaguChek XS® Plus System

Built-in QC and Data Management for Point-of-Care Anticoagulation Testing. This system has the same features as the CoaguChek® XS system but offers updated QC and data-management capabilities for healthcare professionals at the point of care.

- Stores 500 patient and/or QC results
- Operator and QC lockout capabilities
- Code chip programming
- Data storage for up to 60 code chips
- Moderately complex

10-Box Starter Kit (109-3345) .....ea  
 Contains: CoaguChek® XS Plus Analyzer, 10 boxes (480 total) of CoaguChek XS PT test strips & CoaguChek lancets.



### CoaguChek XS® System PT/INR Monitoring Solution

The next generation in point-of-care prothrombin (PT) and international normalized ratio (INR) testing, this new system uses exclusive smart technology to help ensure accurate results and offers the flexibility and control that healthcare professionals need to confidently manage a wide range of anticoagulated patients. It is the only system to perform onboard quality control and determine patient results in a single test chamber.

- CLIA waived
- Neutralizes therapeutic levels of heparin and LMWH
- INR corrected for hematocrit within specified range; manage a broad array of patients with a single device
- Small sample size (10 µL) for easy dosing
- Strip allows dosing from either top or side for simple blood application
- Small, battery-powered, handheld meter for portability and efficiency
- New onboard controls; no external QC necessary
- Auto-on with strip insertion and auto-off capabilities
- 18-month strip shelf life; no refrigeration needed

- Analyzer (891-0581) .....ea
- 3-Box Starter Kit (108-1861) .....ea
- Contains: XS Analyzer, 3 boxes of CoaguChek XS PT strips (144 total) & CoaguChek Lancets.
- 5-Box Starter Kit (108-7757) .....ea
- Contains: XS Analyzer, 5 boxes of CoaguChek XS PT test strips (240 total) & CoaguChek Lancets.
- 10-Box Starter Kit (108-2228) .....ea
- Contains: XS Analyzer, 10 boxes of CoaguChek XS PT test strips (480 total) & CoaguChek Lancets.

## Diamond Advance

ultralight high-performance pipettor

### Fully Autoclavable!

The Diamond Advance is a high precision, fully autoclavable air displacement pipettor. The Advance is made from chemically resistant materials that provide consistent performance and a long service life. The Advance is simple to operate, light weight and extremely comfortable to use by both right and left handed users. Each pipettor is color coded for quick volume identification.

- Fully autoclavable and UV resistant
- 3 year warranty
- Light-weight, ergonomic design
- Easy to clean and calibrate in house
- Large 4 digit display window
- Calibrated in an ISO 17025 accredited laboratory

globe SCIENTIFIC INC.

For more information contact your Henry Schein representative or visit us at [www.globescientific.com](http://www.globescientific.com)



### Hb 201+ Handheld Hemoglobin Analyzer

Offers the same important benefits as its predecessor, the B-Hemoglobin Photometer. Smaller size gives more flexibility and mobility to use the system anytime and anywhere. Performs an internal self-test. No control cuvette required.

- Produces results in less than 1 minute with lab-quality accuracy
- 3 easy steps
- Precalibrated, portable analyzer that requires minimal maintenance
- No calibration or instrument manipulation (between cuvette/reagent batches) is needed
- Safe and easy to use
- Reimbursable
- CLIA '88 waived
- 2-year warranty



- Analyzer (345-2344) .....ea
- Contains: analyzer, AC adapter, manual & training CD-ROM.
- Microcuvettes (110-9167) .....100/box
- Contains: 4 packs of 25.
- Microcuvettes (345-8733) .....200/box
- Contains: 4 packs of 50.
- (629-9053) .....200/box

## Need **all** the pieces without the puzzle?

Hematology analyzers offer performance, value and safety in an easy-to-use system.



Chemistry systems provide exceptional capacity for improved workflow and productivity.

Immunoassay systems deliver new levels of efficiency, standardization and cost effectiveness.

Hemocult and other Rapid Test Kits enable non-invasive testing with high specificity and sensitivity.

### Total lab solutions from a single, reliable source.

Providing different products from different vendors can be highly perplexing—and a poor fit for your customer. Fortunately, there's a better way. Beckman Coulter offers affordable solutions for immunoassay, chemistry, hematology, Hemocult and other rapid test kits—from one convenient source. Walk-away instrumentation, broad testing menu, trusted quality, backed by an experienced industry leader. . . the pieces simply fall into place.

**Call your Henry Schein Clinical Laboratory Representative today.**

© 2011 Beckman Coulter, Inc. Beckman Coulter, the stylized logo and Hemocult are registered trademarks of Beckman Coulter, Inc.



“The OneStep UA reader produces accurate CLIA-waived tests with a hard copy”



The OneStep line of diagnostic tests features superior clinical performance, accuracy, and quick results. Efficient and affordable to help control your costs and expand patient care.



**HENRY SCHEIN® URISPEC™ GP+A URINE REAGENT TEST STRIP (100-6567)** .....100/btl



**HENRY SCHEIN® URISPEC™ 4-WAY URINE REAGENT STRIP (107-7157)** .....100/btl



**HENRY SCHEIN® URISPEC™ 11-WAY URINE REAGENT TEST STRIP**  
Urine Reagent Test Strips  
**(102-2285)** .....100/btl  
CPT® Codes: 81000†/81001†/81002†/81003†



**HENRY SCHEIN® ONESTEP+ URINALYSIS READER AND URISPEC 11-WAY URINE STRIP COMBINATION**

- CLIA waived
- Readings eliminate subjectivity of visual color interpretation, which makes urinalysis simpler and more reliable
- Features no-touch operation: After strip placement, measurement starts automatically, which makes urinalysis faster and more hygienic
- For use with Henry Schein Brand Urispec™ 11-Way Reagent Strips only

Analyzer  
**(900-7017)** .....Ea.  
Contains: 1 OneStep+ Urinalysis Reader & 12 bottles of Urispec 11-Way Urine Strips.  
OneStep Plus Reader Paper Rolls  
**(900-4163)** .....6/pkg



**HENRY SCHEIN® URISPEC URINALYSIS CONTROLS**  
For Most Brands of Routine Urine Dip Sticks and Pregnancy Tests

- Values for all pregnancy test brands
- Assays for common brands of urine dip for routine urinalysis (2 parameter-10SG)
- Control for urine tablet test
- Includes values for microalbumin, creatinine, and hCG
- Two distinct levels (normal and abnormal)
- Closed vial dating up to 2 years with refrigerator storage

3 Bilevel Sets, 15 mL/Tube (6 Vials)  
Dipstick in tube, with open-vial stability of 90 days at 2°C–8°C.  
**(900-4991)** .....ea  
2 Bilevel Sets, 25 mL/Dropper Bottle (4 Bottles)  
Open-vial stability of 18 months at 2°C–8°C.  
**(900-4992)** .....ea

**HENRY SCHEIN®**  
BRAND PRODUCTS

**What's Your Fave?**



## Empowering Cardiovascular Treatment Decisions

The right diagnostic tools provide the timely, actionable data you need to make better in-office decisions that can improve your patient's quality of life.



### Complete Lipid Profile with the Cholestech LDX® System

Get your patients to goal, and experience a smarter, faster workflow that improves office efficiencies. CLIA waived Lipid Profile, Glucose, and ALT•AST results in 5 minutes.



### Track Coumadin® Patients with the INRatio®2 System

Empower face-to-face dosage change decisions that can help your patients stay in therapeutic range. CLIA waived, fingerstick PT/INR results in about 1 minute.



### Manage Heart Failure with the Triage® Meter

Diagnose, assess severity, and risk stratify your patients at risk for heart failure in approximately 15 minutes, right in your office. BNP test is CLIA waived for whole blood.



Be empowered. Connect to rapid results. Make smarter decisions.

Contact your sales representative today!

[alere.com](http://alere.com)

©2010 Alere. All rights reserved. Cholestech LDX, INRatio, Triage, and the Alere Logo are trademarks of the Alere group of companies. Coumadin is a trademark of Bristol-Myers Squibb Pharma Company. 1000017vA

For accurate assessment of *H. pylori* infection

## Advance from **Blood to Breath**



### Get *H. pylori* test results in around 10 minutes

*"A positive [blood] test is no better than a coin toss in predicting ... active infection. UBTs [Urea Breath Tests] ... provide reliable means of identifying active *H. pylori* infection".<sup>1</sup>*

#### Real-time Breath Testing from Exalenz Bioscience Offers

- Superior accuracy – 100% Sensitivity, 99.2% Specificity<sup>2</sup>
- Rapid testing – ~10 minutes from start to results
- Ease of use – 1 button operation
- Enhanced revenue potential – National median Medicare rates for CPT Codes 83013 & 83014 is \$102.93<sup>3</sup>

#### Advance to Breath Testing Today

Email [contact@exalenz.com](mailto:contact@exalenz.com), call 888-EXALENZ or visit [helicobacterpyloritest.com](http://helicobacterpyloritest.com) today.



1. American College of Gastroenterology (ACG), Guideline on the Management of Helicobacter pylori Infection, 2007.  
2. Data on file. Refer to [helicobacterpyloritest.com](http://helicobacterpyloritest.com) for more information.  
3. National average Medicare rates as published in the 2010 Clinical Lab Fee Schedule. The rates of 3rd party payers, including commercial insurers, may vary. As with any procedure, it is the provider's responsibility to determine the reimbursement specifics that pertain to their patients and practice. Please refer to the BreathID® Billing Guide for more information.

© 2010 Exalenz Bioscience, Inc. The BreathID® System is a registered trademark of Exalenz Bioscience, Ltd.

MITD 00028 Rev. 01

## HORIBA Medical

**HORIBA Medical** offers more innovative methodologies for laboratories to help improve tomorrow's health.

Over 40,000 **HORIBA Medical** hematology analyzers and clinical chemistry systems have been sold to laboratories throughout the world.



For all your diagnostic solution needs, contact your Henry Schein Representative today!

**HORIBA Medical**  
(949) 453-0500 • (888) 903-5001  
[www.horiba.com/medical](http://www.horiba.com/medical)

[info.medical@us.horiba.com](mailto:info.medical@us.horiba.com)

AD-022411, Rev. A



## SANYO Under-Counter Refrigerators and Freezers

# SANYO

SANYO undercounters feature stable temperature and uniformity with convenient door mounted temperature controls for the demanding standards of clinical, life science, and pharmaceutical industries.

The compact design allows for easy installation under counter, counter top, or within the knee-well of laboratory cabinetry.

- Door mounted microprocessor controller and interior forced air circulation
- Safe and secured storage behind a keyed locking door and optional padlock hasp
- Integrated alarm functions, remote alarm contacts and monitoring probe access port
- Meets JCAHO standards for controlling medication access.



Model Number	Volume (cu.ft.)	Exterior Dimensions (w x f-b x h)	Temperature
SF-L6111W (Freezer)	5.4 153 L	23.6" x 22.5" x 25.6" 600 x 571 x 876 mm	-15°C to -20°C Microprocessor
SR-L6111W (Refrigerator)	6.1 173 L	23.6" x 22.5" x 34.5" 600 x 571 x 876 mm	1°C to 14°C Microprocessor

*Some models are stackable*

[www.sanyobiomedical.com](http://www.sanyobiomedical.com)

# Stop Surprises



Surprises don't belong in the lab – dependability is crucial to your daily routine. The ACE Alera® clinical chemistry system offers that dependability by providing reliable, accurate results in a small footprint.

Alfa Wassermann has manufactured high quality products for over 25 years. While no analyzer is perfect, we work hard to provide the best possible experience for you. With eight consecutive years of award-winning customer excellence, it's no surprise that Alfa Wassermann is #1 in chemistry analyzers for the Physician Office Laboratory.\*

Call your Henry Schein sales consultant for more details.



## ACE Alera® Clinical Chemistry System

- Small footprint (less than 28 inches wide) conserves space
- Closed tube sampling improves safety and work flow
- Ready-to-use liquid reagents
- No external water or waste supply required
- Wide test menu, including:
  - Anemia testing: Ferritin, Iron, Direct TIBC, and Transferrin
  - Diabetes management: HbA1c and Microalbumin
  - Cardiac risk assessment: Apo A, Apo B, and Lp(a)

**ALFA WASSERMANN**  
Diagnostic Technologies, LLC

4 Henderson Drive, West Caldwell, NJ 07006 Phone: 800-220-4488 Fax: 973-276-0383 Website: [www.AlfaWassermannUS.com](http://www.AlfaWassermannUS.com) Email: [info@AlfaWassermannUS.com](mailto:info@AlfaWassermannUS.com)

**Reliable. Accurate. Alfa Wassermann. Count On Us For Results.**

\*2010 HPIIS data, Clinical Chemistry Analyzers 91-990, Moderately Complex Physician Office Lab, 1<sup>st</sup> & 2<sup>nd</sup> Qtr. Data

## WATERMARK MEDICAL [ARES™] APNEA RISK EVALUATION SYSTEM



### A home sleep test device:

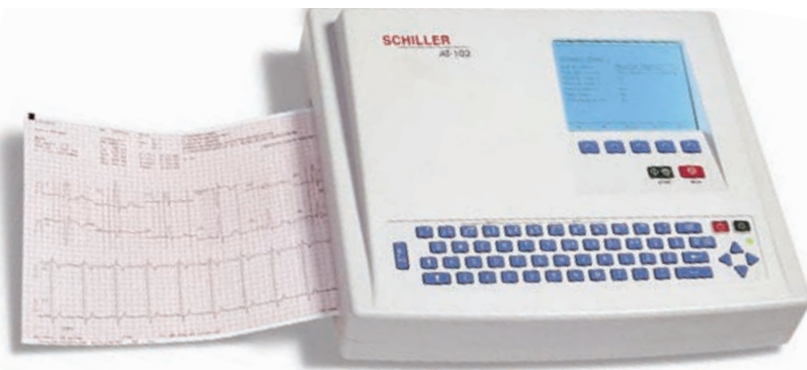
A sleep-wearable, wireless physiological recorder worn on the forehead that acquires and stores up to 3 nights of nocturnal data. WM ARES™ Unicorder measures blood oxygen saturation (SpO2) and pulse rate (reflectance pulse oximetry), airflow (by nasal cannula connected to a pressure transducer), respiratory effort (a combined signal using pressure transducer sensing forehead venous pressure, venous volume by photoplethysmography, and actigraphy), snoring levels (calibrated acoustic microphone), head movement and head position (accelerometers).

When worn in the home, the ARES™ provides a better profile of the patient's breathing during sleep in his/her normal environment. Audio and visual indicators notify the user when the ARES™ requires adjustment, thus increasing reliability of the device in the home. The small size of ARES™ allows it to be comfortably worn in all sleep positions.

**wm watermarkmedical®**

# 15% Off!

## YOUR NEXT REPAIR



# TRUE VALUE

QUALITY REPAIRS EXCEPTIONAL SERVICE GENUINE

PARTS



[www.facebook.com/ProRepair](http://www.facebook.com/ProRepair)

15% Off!

Use this gift certificate for 15% off your next repair.



Send Us Your Repairs:



Instrument Sharpening & Surgical Repair



Endoscope Repair



Sterilizer Repair



Small Equipment Repair



For repair mailer kits, packaging material or for more information call ProRepair at: **1-800-367-3674** 8am-7pm (et) [www.prorepair.com](http://www.prorepair.com) [prorepair@henryschein.com](mailto:prorepair@henryschein.com)

VALID FROM APRIL 4 – AUGUST 31, 2011.

CUSTOMER # \_\_\_\_\_

CUSTOMER NAME \_\_\_\_\_

CUSTOMER PHONE # \_\_\_\_\_

© 2011 Henry Schein, Inc. No copying without permission. Not responsible for typographical errors. Original certificate only must be sent with repair to be valid. VALID ONLY THROUGH HENRY SCHEIN PROREPAIR DIVISION. Manufacturer repairs not included. Cannot be combined with any other promotion or discount. Minimum billing amount of \$89 necessary. One certificate per repair.

## BD Affirm™ VPiii Microbial Identification System



### The Problem:

Mixed vaginal infections.

One of every four vaginal infections are caused by two or more organisms: *Candida* species, *Gardnerella vaginalis* or *Trichomonas vaginalis*.

Failure to diagnose these common causes of vaginitis can carry significant risk for your patients. Trichomoniasis and bacterial vaginosis (BV) are associated with increased risk of HIV infection, delivering preterm, low birth weight babies and, if untreated, PID.<sup>1,2</sup>

### The Solution:

1 molecular test that detects & differentiates 3 organisms.

The BD Affirm™ VPiii system quickly identifies and differentiates three pathogens from one single test. The Affirm VPiii technology provides RNA accuracy to enable targeted therapies.

- Results in < 45 minutes
- Enables proper therapy, the first visit
- Unaffected by difficult specimens: menses, sperm or creams from self medication.<sup>3</sup>

Learn more about Affirm VPiii testing in your laboratory, call 800.553.3470.



Helping all people live healthy lives

BD Diagnostics  
800.638.8663  
[www.bd.com/ds](http://www.bd.com/ds)

<sup>1</sup> Trichomoniasis, CDC, Div. STD. Fact Sheets Sept 2000.  
<sup>2</sup> Bacterial Vaginosis, CDC, Div. STD. Fact Sheets Sept 2000.  
<sup>3</sup> Data from package insert.

BD, BD Logo and Affirm are trademarks of Becton, Dickinson and Company. ©2009 BD

# Celebrate the Section 179 Benefit with

## \$179 Payments for 12 Months

Followed by 36 or 60 Monthly Payments when Financing with Henry Schein Financial Services

Use Section 179 of the IRS Tax Code to acquire up to **\$500,000** in Capital Equipment in 2011!

Section 179 encourages business owners to invest in equipment or technology by allowing them to deduct a substantial amount of the asset's value immediately. Taxpayers who acquire equipment – including machinery, furniture, fixtures and off-the-shelf software – may be able to deduct up to \$500,000 of the value during the first year of ownership. Standard first-year MACRS deduction applies to the remaining amount up to \$2,000,000.

To take advantage of this **limited time offer**, contact

**1-631-843-5554** (Eastern U.S.)

**1-801-446-1185** (Western U.S.)

or [hsfs@henryschein.com](mailto:hsfs@henryschein.com)

\*Minimum terms and conditions: (1) For Equipment/Technology Only. (2) Minimum transaction size must be \$5,000. (3) Document fee due prior to commencement of the agreement. (4) If the agreement is a lease, then monthly payments are subject to, and exclusive of, applicable taxes. (5) **Must take delivery by April 23, 2011.** (6) All transactions are subject to underwriting guidelines, credit approval, and documentation requirements, and not all applicants will qualify. (7) Henry Schein Financial Services retains the right to modify or terminate the promotion at any time without further notice. (8) Leasing or financing for this promotion is available through Henry Schein Financial Services only. (9) Henry Schein Financial Services does not provide tax advice. Please check with your tax advisors. (10) Other restrictions and additional terms and conditions may apply.



Henry Schein Financial Services is not a bank, does not represent itself as such, and does not conduct banking activities.

© 2011 Henry Schein, Inc. No copying without permission. Not responsible for typographical errors.

Ritter®  
by MIDMARK

## Ritter M11 UltraClave® Automatic Sterilizer



Like the Ritter M9, this unit also contains an automatic opening door. Unique chamber size gives it the most sterilizing capacity of any standard countertop sterilizer on the market. Featuring a modern look, quiet door operation, and pulse air-removal technology, this sterilizer couldn't be easier, more efficient, or more reliable. You load it, set it, and forget it.

- Door opens automatically
  - UL listed and CSA/ASME certified
  - Chamber size: 11" x 18"
  - Weight: 99 lb
- (386-8917) .....ea



## Join us for the Henry Schein Medical Education and Equipment Expo

This event will show you options that will help improve your patient care and your practice profits!

- Considering adding equipment that can make your practice more profitable while improving patient care and optimize office efficiency? Come see many of these products that can provide you with these advantages all under one roof and at one time.
- Are you concerned with the new Healthcare Bill and how it will impact your practice? Do you know what changes should be made in your practice to increase your reimbursement processing?
- ICD -10 is considered by many experts the change that will have the greatest financial impact on practices ever implemented. Are you prepared? Do you want to know HOW to get prepared?
- Meaningful Use goes into effect this year. Do you want to know the ins and outs of Meaningful Use for your Electronic Health Records System?
- CPR Guideline changes have been implemented by the American Red Cross? Has your staff been recertified?

If any or all of the above questions are of interest to you, Henry Schein Medical will be offering 3 CEU credits on each of these topics at our Medical EXPO Seminar. Nationally Renowned Speakers will be teaching these courses. Costs for each session are provided online. In addition, there will be an extensive display of the latest equipment and technology currently available to assist you with issues addressed in these classes. Please contact your local Henry Schein Sales Consultant for more information.

For more information, visit: [www.henryschein.com/events](http://www.henryschein.com/events) or e-mail [medicalevents@henryschein.com](mailto:medicalevents@henryschein.com)



## 2011 Education and Equipment Expo Schedule

To register, visit: [www.henryschein.com/events](http://www.henryschein.com/events)

For more information contact: **Annamarie Schneider**  
Phone: 631-390-8245 • E-mail: [medicalevents@henryschein.com](mailto:medicalevents@henryschein.com)

City	Date	Location
San Antonio, TX	Thursday, April 28 <sup>th</sup>	Omni San Antonio – (210) 691-8888 9821 Colonnade Ave. San Antonio, TX 78230
Boston, MA	Tuesday, May 3 <sup>rd</sup>	Doubletree Westborough – (508) 366-5511 5400 Computer Drive Westborough, MA 01581
Brooklyn, NY	Tuesday, July 19 <sup>th</sup>	Brooklyn Marriott – (718) 246-7000 333 Adams St. Brooklyn, NY 11201
Chicago, IL	Thursday, July 21 <sup>st</sup>	Intercontinental O'Hare – (847) 544-5300 5300 North River Rd. Rosemont, IL 60018
Indianapolis, IN	Tuesday, August 16 <sup>th</sup>	Indianapolis Marriott East (317) 352-1231 7202 East 21st St. Indianapolis, IN 46219
Birmingham, AL	Thursday, August 25 <sup>th</sup>	Wynfrey Hotel – (205) 987-1600 1000 Riverchase Galleria Birmingham, AL 35224
Dallas, TX	Wednesday, August 31 <sup>st</sup>	InterContinental Dallas – (972) 386-6008 15201 Dallas Parkway Dallas, TX 75001
Greensboro, NC	Thursday, September 8 <sup>th</sup>	Grandover Resort – (800) 472-6301 1000 Club Rd. Greensboro, NC 27407
Detroit, MI	Thursday, September 15 <sup>th</sup>	Detroit Marriott Troy – (248) 680-9797 200 W. Big Beaver Rd. Troy, MI 48084
Baltimore, MD* (Equipment Expo Only)	Wednesday, September 21 <sup>st</sup> 2:00PM–8:00PM	Kings Contrivance – (410) 995-0500 10150 Shaker Drive Columbia, MD 21046
Long Beach, CA	Thursday, September 22 <sup>nd</sup>	Marriott Long Beach – (562) 425-5210 4700 Airport Plaza Drive Long Beach, CA 90815
Atlanta, GA	DATE/LOCATION TO BE DETERMINED	

Call: **1-800-P-SCHEIN** (1-800-772-4346) • 8am–9pm (et) Fax: **1-800-329-9109** 24 Hours

[www.henryschein.com/medical](http://www.henryschein.com/medical)

Due to manufacturer price increases, prices are subject to change without notification. Offer valid on our full array of products, excluding flu vaccine and Synagis®. Upon any request by Medicare, Medicaid, Tricare or other payer, you must report the value of any benefit received from a discount program (e.g., points redemptions, gifts or other special awards) ©2010 Henry Schein, Inc. No copying without permission. Not responsible for typographical errors. No adjustments from prior sales. Offer not to be combined with other promotions and/or special contract pricing. Void where prohibited. Local regulatory requirements may apply to use or installation of certain products. It is your responsibility to understand and comply with any such requirements prior to purchase, use or installation of products.

Printed on recycled paper.  
Please recycle it again.

11MS4644

Mention **PROMO CODE GP** to ensure promotional pricing.