

**HENRY SCHEIN®**

SPECIAL MARKETS

20 | **Healthy Lifestyles**  
14 | HEALTHY COMMUNITIES



*Together, We're Helping Health Happen.*



To Order: **1.800.851.0400** 8am-8pm (et)  
To Fax: **1.877.350.7890** 24 Hours  
[www.henryschein.com/sm](http://www.henryschein.com/sm)

Printed on recycled paper.  
Please recycle it again.



Healthy Lifestyles,  
Healthy Communities™



**HENRY SCHEIN CARES** is once again working with nonprofit organizations to enhance access to oral health care for underserved and at-risk communities. Thus far, we have raised over \$110,000 through our Calendar of Caring Community Wellness Program. The money raised was the result of donated proceeds from purchases made by Henry Schein's customers and matching grants made by the Henry Schein Cares Foundation.

As part of our ongoing effort to support the expansion of access to care, we will once again donate proceeds from the products featured in this 20-page supplement to the Henry Schein Cares Foundation. The Foundation will use this funding to assist four organizations – Children's Dental Health Project, Oral Health America's Wisdom Tooth Project, American Dental Association Foundation's Give Kids A Smile!, and Dental Lifeline Network – in alleviating disparities in oral health care services for underserved and at-risk populations.

### THE CHILDREN'S DENTAL HEALTH PROJECT

designs and advances research-driven policies and solutions by engaging a broad base of partners committed to children and oral health, including professionals, communities, policymakers and parents. They work to eliminate barriers to prevent tooth decay and ensure that all children reach their full potential.



### THE ORAL HEALTH AMERICA WISDOM TOOTH PROJECT®

changes the lives of older adults especially vulnerable to oral disease. Through this program, OHA is pioneering an effort to connect, educate, and advocate for the oral health of all older Americans, especially those most vulnerable.



### AMERICAN DENTAL ASSOCIATION'S GIVE KIDS A SMILE!® PROGRAM

enables dentists to reach out to their communities to provide oral health services to underserved children and raise awareness of the critical need for enhanced access to oral health care for children. Dentists and other team members volunteer their time and services, to provide screenings, treatments, and education to children throughout the United States. Each year, approximately 450,000 children benefit from more than 1500 events, all because of the efforts of 40,000 or more annual volunteers. Henry Schein Dental serves as the program's exclusive professional product sponsor.



ADA American Dental Association®

### DENTAL LIFELINE NETWORK®

(formerly the National Foundation of Dentistry for the Handicapped) is a national humanitarian organization providing access to comprehensive dental services for people with disabilities or who are elderly or medically at-risk. Dental Lifeline Network provides these services through a national network of direct service programs that involve 15,000 volunteer dentists and 3,200 volunteer labs.



We deeply appreciate the engagement of Henry Schein's customers in supporting this effort. Together, we have already made a difference in the lives of countless individuals.

**Please join us in supporting these very important causes!**

The Henry Schein Cares Foundation is a tax-exempt organization under Section 501(c)(3) of the Internal Revenue Code of 1986, as amended. Contributions are tax-deductible as provided by law.

## ANTIBACTERIAL LIQUID HAND SOAP

Mild, gentle and moisturizing. Pleasant cucumber and aloe fragrance. Active ingredient is 0.2% triclosan.

Pump Bottles

(900-4439) .....8 oz. **6.49**

(900-4438) .....16 oz. **9.99**

Refill

(900-4440) .....Gal. **25.99**



## FOAMING ANTIBACTERIAL HAND SOAP

Antibacterial, foaming hand soap contains a natural-based surfactant that provides conditioning to the skin. Clean fragrance. Active ingredient is 0.2% triclosan.

Pump Bottle

(900-4441) .....18.6 oz. **12.49**



## HAND SANITIZER

Waterless, alcohol-based gel hand sanitizer. Rinse-free: no water required. Kills 99.9% of most common disease-causing germs spread by hands. Soothing emollients and a pleasant, fresh, clean scent. Leaves hands soft and clean.

Pump Bottles

(900-4443) .....8 oz. **6.49**

(900-4442) .....16 oz. **9.99**



## MAXISPRAY™ PLUS

Broad-spectrum, tuberculocidal, disinfectant/decontaminant cleaner. Effective against viruses (hydrophilic and lipophilic), bacteria (including VRE), and fungi. Kills MRSA and hepatitis B and C in 2 minutes and TB in 3 minutes. May be used as an immersion solution for noncritical instruments and as a surface disinfectant. Can be used on plastics, stainless steel, chrome, glass, Plexiglas®, and painted surfaces. Contains no phenols. Nontoxic and nonirritating.

Pump Spray

(101-4114) .....24 oz. **18.99**

Refill

(101-0285) .....Gal. **30.99**



## ACCLEAN® CHLORHEXIDINE GLUCONATE 0.12% RINSE

0.12% chlorhexidine gluconate oral rinse used for the treatment of gingivitis. Helps reduce tissue inflammation, bleeding, and plaque accumulation. Mint flavored.

16 oz. Bottle

(900-4010) .....Ea. **7.99**

4 oz. Bottle

(112-6720) .....Ea. **4.29**



## ACCLEAN® DENTAL FLOSS

Nylon shred-resistant floss for easy, comfortable removal of plaque between teeth. Spool can be removed from dispenser to fit J&J dispenser.

Office Spool

with Dispenser .....Ea. **4.99**

Specify:

Unwaxed, 200 Yd. Floss (155-2880)

Waxed, 200 Yd. Floss (155-4658)

Waxed Mint, 200 Yd. Floss (155-4783)

Flat Ribbon Waxed, 100 Yd. Tape (155-5728)

Patient Size

12 Yd. ....72 per Box **26.99**

Specify:

Unwaxed (155-9860) Waxed-Mint (155-0833)

Waxed (155-7084)

Kid's Floss

Patient Size-12 Yd. ....72 per Box **28.99**

(155-2165)

## ACCLEAN® FLOSSERS

Interdental flosser with gum stimulator and pick helps to effectively remove plaque. Unique fiber floss slides easily between teeth without breaking or shredding.

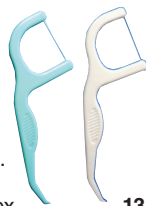
Dispenser Boxes

3 per Pkg.....48 Pkg. per Box **13.99**

Specify:

Mint (112-6517)

Unflavored (112-6518)



## ACCLEAN® TRIPLE CLEAN COMPACT HEAD TOOTHBRUSH WITH TONGUE CLEANER

Triple-level, diamond-polished bristles for better cleaning. Power-cleaning tip provides easy access to posterior teeth; dual component handle for better control and grip. Includes tongue cleaner.

Assorted Colors .....72 per Box

Specify:

Adult-Soft Full Head (900-4065)

Adult-Soft with Tongue Cleaner Compact Head (900-4807)



## NATURAL ELEGANCE® PIT & FISSURE SEALANT-BPA FREE

BPA-free formula is safe and convenient. Indicated for covering and sealing of pits and fissures in occlusal surfaces of posterior teeth, increasing surface caries resistance. This fast, light-curing, low-viscosity material flows easily. White opaque color for easy detection during follow-up visits.

Complete Kit

(112-6407) .....Ea. **51.99**

Contains: 4-1 Gm. syringes of sealant, 1-3 mL bottle of etch & tips.



## ACCLEAN® GENTLE MASSAGE TOOTHBRUSH

Soft rubber stimulators align bristles to gently massage and stimulate gums. Diamond-polished, rounded, multileveled bristle ends remove plaque on teeth, while rubber bristles massage along gum line. Dual-component handle for better grip. Assorted colors.

Adult-Soft Full Head

(900-4067) .....72 per Box **65.99**



## ACCLEAN® EDGE TOOTHBRUSH

Diamond-polished, tapered bristles allow for better access to gingival margins and easier removal of plaque and debris from teeth. Power-cleaning tip provides access to posterior teeth with 2 soft rubber polishing cups for improved stain removal. Textured tongue and cheek cleaner for gentle and effective removal of bacteria. Soft, dual-component handle provides a comfortable grip for better control. Individually wrapped. Assorted colors.

Adult-Full Head

(112-6849) .....72 per Box **60.99**



## ACCLEAN® CHILDREN'S TOOTHBRUSH

Features an easy-to-grip handle. Fits small mouths. Soft nylon bristles. Fun designs. Recommended for ages 3-5.

Child .....72 per Box **68.99**

Specify:

Elephant (900-4630)

Frog (900-4631)



## ACCLEAN® GARFIELD TOOTHBRUSH

The Garfield manual toothbrush is designed for kids. It has soft bristles to protect enamel and sensitive gums and a curved shape to reach the back teeth. Made with a rounded brush head for comfort. The wider handle provides an easy grip and features the fun characters Garfield and his best friend, Odie.

Child (112-6991) .....72 per Box **69.99**

## SPECIALTY TOOTHBRUSHES

### Denture Brush

Bristled on 2 sides-tapered and serrated flat trim for better cleaning action. Natural filament with 0.014" nylon. Assorted handle colors. 4 1/2".

(102-6790) .....12 per Box **10.99**



# Sure-Check® Sterilization Pouches

**BECAUSE YOU CAN'T SEE STERILE.<sup>SM</sup> EVERY LOAD.**

Internal/external multi-parameter chemical indicators **only change color** when all 3 criteria for sterilization have been met...  
Time / Temperature / Steam

**200/box**

2.25" x 4"	SCXX2	(111-7280)
2.75" x 9"	SCX2	(933-0074)
3.5" x 5.25"	SCXS2	(110-5212)
3.5" x 9"	SCS2	(112-0088)
5.25" x 6.5"	SCW2	(633-0007)
5.25" x 10"	SCM2	(110-9530)
7.5" x 13"	SCL2	(110-5122)
8" x 16"	SCL8162	(774-0117)



**100/box**

10" x 15"	SCL10152	(774-0116)
12" x 15"	SCL12152	(111-7002)
12" x 18"	SCL12182	(110-5115)



# STEAMPlus™ Class 5 Integrators

**AT LEAST DAILY.**



Use with your steam sterilization cycles to receive a **distinct pass/fail result** - allowing you to release non-implant loads before receiving spore test results.



**4" x .75" Strip 100/pack SSI100 (613-4050)**

For the best in sterility assurance include a Class 5 Integrator at least once daily.



# Top Mask 3 Years in a Row!

From protection to prevention, only Secure Fit covers all the gaps.



# Earloop Face Masks with SECURE FIT.™ Technology

Secure Fit Technology creates a custom fit to reduce your exposure to airborne particulates by 3X.\*

\* Study on File

Aluminum nose and chin pieces (green arrows) reduce gapping (purple arrows).



## ASTM LEVEL 1 / Isofluid® w/Secure Fit® Technology

Excellent protection against low amounts of fluid.  
(774-0094) **50/box** Blue / (774-0095) Pink / Fluid resistant outer layer

## ASTM LEVEL 2 / Procedural w/Secure Fit® Technology

Excellent protection against moderate amounts of fluid.  
(774-0096) **50/box** Blue / (774-0097) Pink / Fluid resistant layers

## ASTM LEVEL 3 / Ultra® Sensitive w/Secure Fit® Technology

Excellent protection against high amounts of fluid.  
(774-0131) **50/box** White / Hypoallergenic - no chemicals, inks, dyes

"Secure Fit Technology Face Masks were evaluated by 37 consultants, in 1,830 uses, and received a 96% clinical rating."  
- The Dental Advisor



# INFECTION CONTROL HELPLINE



## QUESTIONS? CALL TODAY!

Our clinical consultants are standing by to answer all your infection control questions.

**TOLL FREE 1-8558-STERILE**  
(1-855-878-3745) Mon-Fri / 8 AM-5 PM MST



Visit Crosstex on YouTube to watch a new series of Infection Control Videos.  
[www.youtube.com/CrosstexProtects](http://www.youtube.com/CrosstexProtects)

**CROSSTEX**  
A CAHILL MEDICAL COMPANY

**PROTECTS®**

888-276-7783  
[www.crosstex.com](http://www.crosstex.com)

Ⓜ = NOT MADE WITH NATURAL RUBBER LATEX

Buyer's price may constitute a "discount or other reduction in price" under 42 U.S.C. § 1320a-7b(b) and 42 C.F.R. 1001.952(b). Buyer is solely responsible for (i) accurately reporting all discounts and price reductions claimed or charged to any Federal or State health care program, and (ii) determining whether to report or pass on savings or discounts to payors.

# Protect your practice and patients

## A simple, accurate and distinct immediate pass/fail method of ensuring proper sterilization conditions.

Dental offices continue to face the challenge of sterility assurance on a daily basis. Without using a biological monitor in every load how is sterility assurance achieved? There have been recent allegations of practitioners with reported failure to comply with infection control recommendations, resulting in putting their patients at risk.



At this point the CDC Guideline for Infection Control in Dental Health-Care Settings (2003) recommends that dental facilities perform biological monitoring on their sterilizers "at least weekly"; many states have adopted this recommendation into their state dental practice act.

Many dental professionals wonder if weekly biological monitoring is frequent enough to ensure sterility assurance. Are options available to protect offices and patients between weekly biological monitoring? Is there something that provides an instant readout rather than waiting for results? How can staff become more confident in knowing they have provided the highest level of sterility assurance protection for their patients?

### Chemical Indicators

Chemical indicators play a vital role in the sterilization process. Chemical indicators, whether they are internal or external (\*see more below) use sensitive chemicals to measure only physical variables of the sterilization cycle. One example of a physical condition measurement is temperature.

\*External indicators indicate that a sterilization package or pouch has been exposed to the sterilization process. Internal indicators are used to confirm that the sterilizer agent has penetrated the packaging and has actually reached the instruments inside. Chemical indicators do not verify that sterilization has occurred.

### Class 5 Integrators

A Class 5 integrator is considered to be "advanced technology" as it is an extremely dependable chemical indicator that is designed to react to all critical variables of sterilization: time, temperature and the presence of steam. This provides a simple, accurate method of assuring that proper sterilization conditions have been met during a sterilization cycle. It can be used with all steam sterilizers (gravity, prevacuum and flash cycles). No incubation is required. The information is displayed in an easy-to-read format. When looking at the class 5 strip, once the dark bar enters into the SAFE area it confirms that proper sterilization conditions have been met.

A Class 5 integrator provides a safety margin throughout the entire sterilization process. Documentation shows that the performance of the Class 5 integrator mimics the performance of a biological indicator. However, because Class 5 integrators do not contain spores to validate lethality, it cannot replace use of a biological indicator.

The Class 5 integrator can detect certain types of sterilization failures, such as: inappropriate air-steam mixtures and inadequate air removal. Other physical monitors or chemical indicators may not detect these changes.

Used daily or ideally with every load, the addition of a Class 5 integrator provides an additional margin of safety. Also, this additional level of monitoring will help avoid losing valuable time when having to recall instruments that did not pass a biological monitoring test. A substantial benefit of the Class 5 integrator is its ability to provide a distinct pass/fail result; providing the health care worker with the confidence to immediately release the load.

Considered the gold standard in sterility assurance, the biological indicator determines whether the most resistant microorganisms are present rather than if the physical and chemical conditions were met.

### Technical Design

The technical design of the Class 5 integrator strip has an aluminum foil backing which contains a temperature and steam sensitive chemical. During steam sterilization, the chemical melts and moves across the gauge in a sequential fashion. When the dark bar has entered the blue SAFE area, it means that the critical variables: time, temperature and presence of steam have been met.

### How the Class 5 Integrator is Used

Place the Class 5 integrator inside the load in the middle of the sterilizer load; if using packs, place it inside of a pack. Run the load according to the manufactures instructions for the appropriate cycle. When the cycle is complete, remove the Class 5 integrator. If the dark bar has entered the SAFE area the instruments can be released. However, if the dark bar has not entered the blue SAFE area, do NOT release the load. The instruments must be reprocessed, repackaged and run through another complete sterilization cycle. Document the results of the Class 5 integrator, date and keep the Class 5 integrator for your records.

### Summary

Is your dental office providing the highest level of sterility assurance for your patients? How do you know that your sterilizer is functioning properly between biological monitoring tests? Would you like to have an immediate readout that confirms the sterilizer has reacted to all critical values?

Testing to make sure the sterilizer is functioning properly every load, ensures the highest degree of sterility assurance. Every dental practice wants to offer the safest dental visit for patients. With the cost of Class 5 integrator strips at less than 50 cents per strip they are an affordable addition to your instrument reprocessing protocol.

When it comes to protecting your practice and patients, you want to avoid any chance of a sterilization breach. Correct use of a Class 5 integrator provides a distinct immediate pass/fail result for every load, which gives you the peace of mind and confidence to safely release non-implant containing loads.

Make informed choices when it comes to sterility assurance and protect your practice and your patients.

### Submitted by:

*Sheri Strauss BHS, RDH, RDA, CDA  
Crosstex Southwest Regional Sales Manager*





**COLGATE® PREVIDENT® 5000 BOOSTER PLUS COLGATE ORAL PHARMACEUTICALS**

Most advanced formula for unsurpassed remineralization.<sup>1</sup> Combines faster fluoride dispersion with Fluorigard® Technology<sup>2</sup> to deliver 86% greater enamel fluoride uptake<sup>3</sup> compared to the original Booster formula. Contains tricalcium phosphate. There is no other prescription home fluoride product that is better.

3.4 oz. Bottle .....Ea. **9.99**

Specify:  
Fruittastic (543-0079) Spearmint (543-0080)

<sup>1</sup> Data on File; Colgate-Palmolive, 2012. *In-vitro* pH cycling model after 10 and 20 days. Comparison vs. Clinpro™ 5000 and MI Paste™ Plus topical creme. <sup>2</sup> Optimized Fluoride delivery system. <sup>3</sup> Data on file; Colgate-Palmolive, 2012. *In-vitro* standard method for enamel fluoride uptake. Comparison vs. PreviDent 5000 Booster.



**GUM® SOFT PICKS® SUNSTAR AMERICAS, INC.**

These picks contain 76 soft flexible bristles to remove plaque, dislodge food, and massage gums. Ideal for bridges, braces, and implants. A clinical study showed Soft-Picks® are as effective as strong floss in removing interproximal plaque and reducing gingival bleeding. Latex-free.

Tapered  
5 per Pkg. ....72 Pkg. per Box **55.99**

Specify:  
Original (712-0176) Wider Spaces (712-0171)



**MI PASTE PLUS™ GC AMERICA**

A topical tooth crème for professional use containing RECALDENT™ (CPP-ACP), a special milk-derived phosphopeptide that binds calcium, phosphate, and 0.2% sodium fluoride (900 ppm) to tooth surfaces, plaque, and surrounding soft tissue. Available in 5 pleasant-tasting flavors.

40 Gm. Tubes.....10 per Box **158.99**

Specify:  
Mint (333-2116)  
Strawberry (333-3154)  
Vanilla (333-2699)  
Assorted Flavors (333-8426)  
Contains: 10 tubes (2 of each flavor: Melon, Mint, Strawberry, Tutti Frutti & Vanilla).



**IDENTAFI® ORAL CANCER SCREENING SYSTEM STAR DENTAL**

Handheld, multispectral, oral-examination light used in conventional and specialized oral examinations. Multi-Spectral Fluorescence and Reflectance Technology enhances visualization of mucosal abnormalities, such as oral cancer or premalignant dysplasia, that may not be apparent to the naked eye. Three distinct color wavelengths make it easier to distinguish lesion morphology and vasculature. Diodes deliver double the autofluorescent power to ensure enhanced and thorough detection. Durable, nickel-plated design. 1-year warranty. Complete Unit

(808-0282) .....Ea. **2,999.99**

Contains: 1 Identafi wand, 1 pair of clinician's filtering glasses, 1 box of 24 disposable mirrors, 1 battery charger, 4 rechargeable batteries, 1-5-pack of sample disposable sheaths & 1 set of instructions for use.

Disposable Mirrors  
(808-0261) .....25 per Box **64.99**

Disposable Barriers  
(808-0279) .....100 per Box **78.99**



**ICON® DMG AMERICA**

For the treatment of incipient caries and white spot lesions. Microinvasive technology fills, reinforces and stabilizes demineralized enamel without drilling or sacrificing healthy tooth structure. Infiltration technology can be used to treat demineralized smooth surface and proximal carious lesions up to the first third of dentin. No anesthesia needed.

Smooth Surface Mini-Kit  
(201-0186) .....2 per Pkg. **169.99**

Contains: 1-0.30 mL syringe of etch, 1-0.45 mL syringe of Icon-Dry, 1-0.45 mL syringe of infiltrant, 6 vestibular tips & 1 Luer-lock tip.

Proximal Mini-Kit  
(290-0039) .....2 per Pkg. **169.99**

Contains: 1-0.30 mL syringe of etch, 1-0.45 mL syringe of Icon-Dry, 1-0.45 mL syringe of infiltrant, 6 approximal tips, 1 Luer-lock tip & 4 dental wedges.

**COLGATE TOTAL® ADVANCED PRO-SHIELD™ MOUTHWASH COLGATE ORAL PHARMACEUTICALS**

Provides 12 hours of antibacterial protection, even after eating and drinking. Kills 99% of germs on contact. Alcohol-free. Peppermint Blast™ flavor.



1 Liter Bottles with Pumps  
(543-0115) .....6 per Case **36.99**

1 Liter Refills  
(543-0117) .....6 per Case **30.99**



**COLGATE® PREVIDENT® VARNISH 5% SODIUM FLUORIDE (22,600 PPM) COLGATE ORAL PHARMACEUTICALS**

Delivers a smooth, even, and quick application. The convenient unit-dose packages each contain 0.4 mL of varnish and a brush. Dries to a natural enamel color and contains xylitol. Available in great-tasting raspberry and mint flavors.

Unit Dose-0.4 mL...50 per Box **87.99**

Specify:  
Mint (543-0120) Raspberry (543-0121)

Bulk Pack-0.4 mL 150 per Pkg. **199.99**

Specify:  
Mint (543-4811) Raspberry (543-2267)



**BIOTENE® DRY MOUTH ORAL RINSE GLAXOSMITHKLINE**

Alcohol-free formula that cleanses and helps prevent chronic dry-mouth symptoms. Mild Mint flavor.

2 oz. Bottles  
(583-0005).....24 per Case **20.99**

16 oz. Bottle  
(583-0073) .....Ea. **8.99**

33.8 oz. Bottle  
(584-0005) .....Ea. **14.49**

Gallon Bottle with Pump  
(583-0084) .....Ea. **44.49**

# Watch, Wait, and...**WORRY!**

By *Jill G. Hutchinson, RDH, BS*

It is October 1980, and I am in my first year of dental hygiene school. I am so excited because we are now in pre-clinic and can begin practicing on our fellow classmates what we have learned in theory. Today we are learning to chart, and my clinic partner, Linda, picks up a shepard's hook explorer and begins to probe the pits and fissures of my molars in an attempt to get that "stick" indicating potential caries. Remember, 34 years ago we weren't taught to be "sharp with our eyes, not our instruments," as students now learn and as Esther Wilkins preaches.

Excitedly, Linda notices the operculum on tooth #32 in my mouth. I proceed to tell her that this partially erupted third molar has been bothering me, and together we discover that I have been experiencing "pericoronitis." Late night popcorn while studying in the dorm room was a prime culprit for this area of recurring inflammation! As Linda begins to poke around with her explorer under the gum tissue flap covering the distal one-third of the occlusal surface, she proceeds to get that dreaded "stick!" I could feel it catch, and I was horrified.

Linda was ecstatic that she could chart a red watch area on that tooth, but I was devastated! A cavity on a tooth that hadn't even erupted! I was embarrassed and ashamed that my oral hygiene had allowed this to happen and to an aspiring dental hygienist none the less. I had to wait until the holiday break to return home and have it filled by my dentist.

How could this happen? The idea of watching and waiting until the tooth fully erupted with a high probability of decay, as well as the inability to place a resin sealant until then, was worrisome to me. I began to see more and more of this in clinical practice over the next several years, and the same reaction that I had in school was one that I experienced repeatedly from concerned parents. They would ask me, "Isn't there some type of treatment that you can do now" (to protect these partially erupted caries-prone molars)? This question, along with my personal experience, drove me to investigate this phenomenon more in depth. It has become one of my personal crusades as a practicing hygienist and a clinical educator to find a solution, and here's why.

- The operculum covering the distal one-half of these teeth during the eruption process allows for the retention of plaque and the initiation of the carious process before complete eruption has occurred. The eruption time for the first and second molars is about 1.5 years (*length of time these teeth go unprotected!*)
- The location of the permanent molars in the posterior region of the child's mouth also complicates his or her ability to properly clean these areas and remove debris. As long as an erupting tooth has no antagonist contact, plaque accumulation and caries are promoted.
- Almost every young patient 6-18 years of age will have a partially erupted molar in some stage of development. Indications are that up to 50% of every partially erupted molar exhibits signs of an incipient lesion – deep pits, fissures and hypomineralized areas are very common.
- "Erupting teeth can be exposed to prolonged acid attack under the operculum with no chance of remineralization occurring for months." *Evans, H.F. Partially Erupted Teeth: Seal...or Wait and Hope? Dentistry Today. Feb. 2006, p. 102-104*



## **THE PROBLEM:**

- Operculum = Bacteria Trap
- Moisture and a Wet Field
- A Treatment Nightmare!

## **Current Treatment Options:**

- > Resin Sealant – Impossible to Do
- > Fluoride Treatment – Not the Best Option
- > Watch, Wait, Worry...and Hope!

**The current “watch and wait” option provides no treatment for the patient.**

## **THE HEALTHY SOLUTION: GC Fuji TRIAGE Sealant and Surface Protectant**

- Moisture Friendly – Works in a WET Field!
- No Isolation, Etching or Bonding Required
- Self Adhesive, Self Curing, and Self Occluding
- Rechargeable Fluoride Release for 24 months
- Creates Fluorapatite Enamel
- BPA and BIS-GMA Free
- Saves Valuable Chairtime and is Cost Effective
- Fewer Steps - Simple and FAST = 4 – 8 Sealants in only 3 to 5 minutes!



**GC Fuji TRIAGE  
is brushed under the  
operculum and into the  
pits and fissures.**

## **IT'S EASY TO GET STARTED!**

*Ask yourself, how many partially and newly erupted molars do you see per week?*

1. Identify potential treatments on all patient exams – ages 6 – 18 years
2. Discuss treatment options with patient/parent
3. Utilize **GC Fuji TRIAGE** at the prophylaxis appointment or reappoint if necessary
4. Realize additional preventive revenue!

**GC Fuji TRIAGE is a hydrophilic, self-cure, self-adhesive, high fluoride-releasing sealant, and the BEST product available to effectively treat partially erupted molars!**

After 32 years as a dental hygienist, I can honestly say that we have come a long way with preventive dental products. Dentistry has continually changed and evolved with more biocompatible dental materials and the practice of minimally invasive dentistry. I absolutely love that I can educate my colleagues and offer a new treatment option, a “healthy solution” for patients with caries-prone partially erupted molars, especially because dental caries is still the number one childhood disease.

**For more information on GC Fuji TRIAGE, contact Jill or visit [gcamerica.com](http://gcamerica.com).**

**Jill G. Hutchinson, RDH, BS      [jill\\_hutchinson@gcamerica.com](mailto:jill_hutchinson@gcamerica.com)      #757.705.0231**  
**Clinical Educator and Special Markets Account Manager for GC America**



## Behind the system that protects your patients, is a long history of hospital infection prevention.

Trust nothing less than Metrex™ from Kerr TotalCare™ across all 8 Points™ of Dental Patient Care.

Henry Schein #	Product
(640-0018)	CaviCide1 24 oz Spray Bottle
(640-0023)	CaviWipes1 - 9"x12" 65 presaturated towelettes
(640-0024)	CaviWipes1 - 6"x6.75" 160 presaturated towelettes



CaviWipes1™ and CaviCide1™

*Trusted in thousands of health care facilities every day to disinfect surfaces.*

**KerrTotalCare™**  
kerrtotalcare.com

©2014 Metrex Research. All Rights Reserved. Metrex, Kerr TotalCare, CaviCide1, CaviWipes1 and 8 Points are trademarks of Metrex Research LLC. AN-2014-04-0029





# Saving Lives and Growing Your Practice through Dental Sleep Medicine

## *An Implementation Symposium*

“Dental sleep medicine is a rapidly evolving field of preventive medicine. However, there remains a shortage of well-trained dental sleep medicine specialists. Those learning more about this field will discover an exciting interdisciplinary arena that is rife with opportunities to develop new dental interventions to treat complex clinical situations and improve the health and well-being of the estimated 20% of the population suffering from sleep disorders.”

*Gilles J. Lavigne, DMD, MSc, PhD, FRCD(C)  
 Professor of Oral Medicine and Canada Research Chair in Pain, Sleep and Trauma  
 Dean, Faculty of Dental Medicine*

### On completion of this program, you will be able to:

- Build and maintain a solid Dental Sleep Medicine Practice
- Communicate with Physicians and Develop Referrals
- Understand how to select an Oral Appliance
- Bill Medical Insurance and Get Paid
- Market your Dental Sleep Medicine Practice

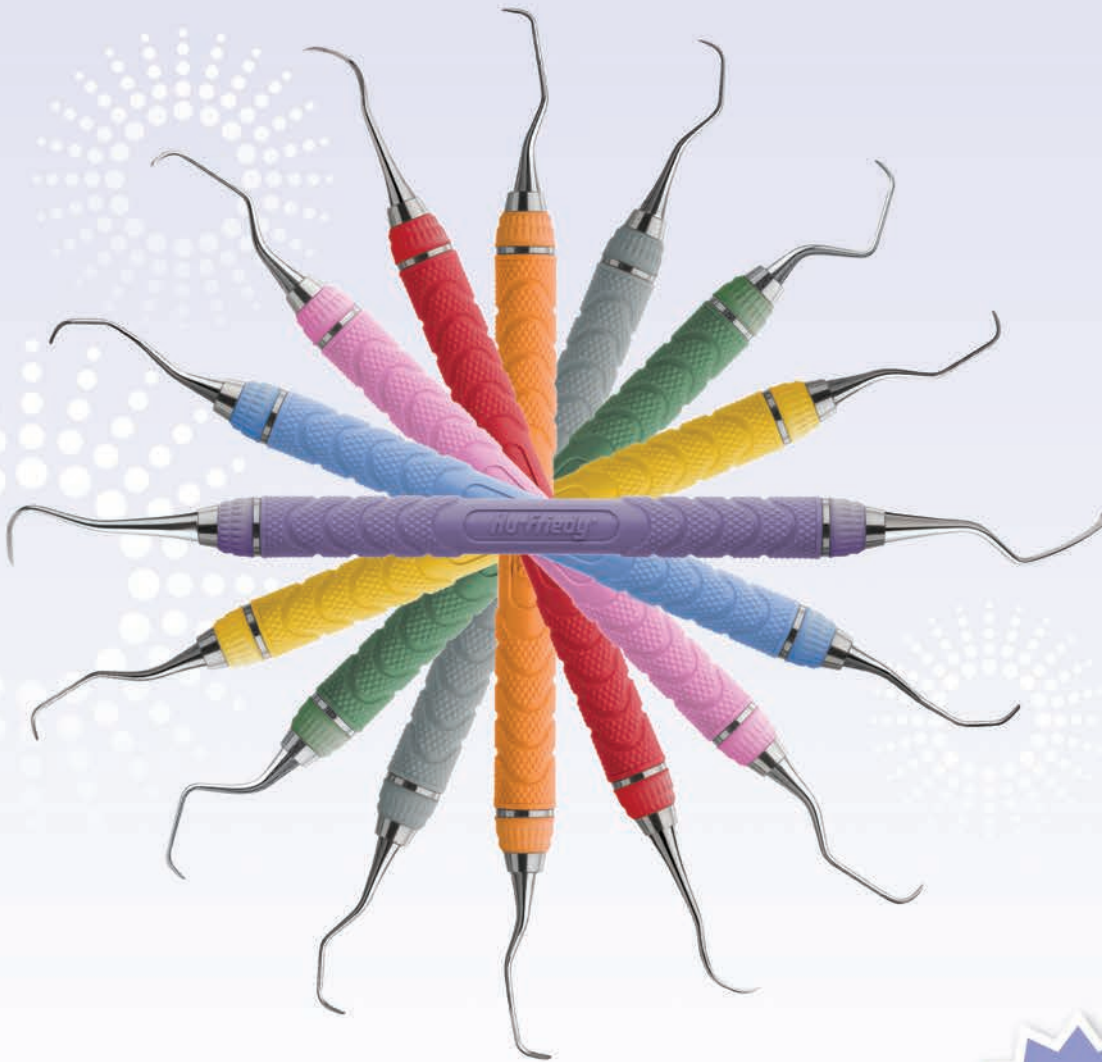
### 2014 Seminar Schedule

Jan 17th & 18th . . . . . Sandy, UT	Jul 11th & 12th . . . . . Sacramento, CA	Oct 17th & 18th . . . . . Portland, OR
Feb 28th & March 1st. Mt Laurel, NJ	Jul 18th & 19th . . . . . Denver, CO	Oct 24th & 25th . . . . . Northern Los Angeles, CA
March 21st & 22nd . . Boston, MA	Aug 1st & 2nd . . . . . Dallas, TX	Nov 7th & 8th . . . . . Long Island, NY
April 4th & 5th . . . . . San Francisco, CA	Aug 8th & 9th . . . . . Columbus, OH	Nov 14th & 15th . . . . . Tulsa, OK
May 2nd & 3rd . . . . . Chicago, IL	Aug 15th & 16th . . . . . Virginia Beach, VA	Nov 21st & 22nd . . . . . Grand Rapids, MI
May 16th & 17th. . . . Atlanta, GA	Sept 19th & 20th . . . . Wisconsin Dells, WI	Dec 12th & 13th . . . . Detroit, MI
Jun 20th & 21st. . . . . San Antonio, TX	Oct 3rd & 4th. . . . . Cincinnati, OH	

For More Information: [www.sleepcomplete.com](http://www.sleepcomplete.com)  
 Inquiries & E-mail: [sleepcomplete@henryschein.com](mailto:sleepcomplete@henryschein.com)  
 To Register: [www.henryscheineventconnect.com](http://www.henryscheineventconnect.com)  
 (Select Category - Dental Sleep Medicine)

### **ADA C-E-R-P®** | Continuing Education Recognition Program

Henry Schein Dental is an ADA CERP Recognized Provider. ADA CERP is a service of the American Dental Association to assist dental professionals in identifying quality providers of continuing education. ADA CERP does not approve or endorse individual courses or instructors, nor does it imply acceptance of credit hours by boards of dentistry.



PERIODONTAL



## RESIN 8 COLORS: THE BEST OF BOTH WORLDS

*Color resin handles meet Hu-Friedy quality steel*

EverEdge® keeps working ends sharper longer

Lightweight, ergonomic handles

Color-coded based on area of the mouth

Available in 80 different patterns

TRY THE NEW  
CENTENNIAL  
SICKLE HOE  
SCALER

Visit us online at [Hu-Friedy.com](http://Hu-Friedy.com)

©2014 Hu-Friedy Mfg. Co., LLC. All rights reserved.

How the best perform

**Hu-Friedy**



# Are You Sure?

Be **CONFIDENT** you can achieve quality cures while eliminating the risk of cross-contamination

## **TIDIShield™** LED Curing Light Sleeves with *The SureCure Window™*



### CONFIDENT CURES

TIDIShield™ Curing Light Sleeve with The SureCure Window™ is proven to produce cured restorations equal to those where no barrier is used.

### INFECTION PREVENTION

Unique individually wrapped, easy-peel outer wrapping protects inner sleeve from contamination. Eliminates the potential for bacteria build-up on curing light surfaces.

### COMFORT

Custom fit with soft, rounded edges for greater patient comfort.

### COST-EFFECTIVE

Extends the life of equipment by reducing the need for harsh disinfectants on your curing light. Prevents hard to remove composite build up on the curing light tip.



## Also try these **TIDIShield™ Custom Fit Barriers**

### Intra-Oral Camera Covers with *The SureClear Window™*

- Custom fit that eliminates distortion
- SureClear Window™ for superior image quality
- Unique individually wrapped, easy-peel outer wrapping protects inner sleeve from contamination
- Reduces the need for using harmful disinfectants on your intra-oral camera
- Not made from natural latex rubber



### X-Ray Sensor Sheaths

- Custom fit for ergonomic handling
- Soft, rounded edges for greater patient comfort
- Unique individually wrapped, easy-peel outer wrapping protects inner sleeve from contamination
- Reduces the need for using harmful disinfectants on your X-ray sensors
- Not made from natural latex rubber



PATENT  
PENDING



570 ENTERPRISE DRIVE, NEENAH, WI USA 54956  
TOLL FREE 1.800.521.1314  
INTERNATIONAL +1 920.751.4036  
FAX 1.800.837.7770

COPYRIGHT © 2014 TIDI PRODUCTS, LLC. ALL RIGHTS RESERVED.

MADE IN USA LOGO IS A REGISTERED TRADEMARK OF MADE IN THE USA BRAND, LLC. TIDISHIELD IS A TRADEMARK OF TIDI PRODUCTS, LLC.



## LED Curing Light Sleeve

with *The SureCure Window™*

Maximum Curing —  
Maximum Infection Control



TIDI Products, the #1 manufacturer of single-use, disposable infection prevention products, has launched the dental industry's first curing light sleeve proven to allow maximum curing efficiency. The innovative *TIDIShield Curing Light Sleeve with the SureCure Window™* allows curing lights to perform as well as if no barrier were being used. The sleeve's patent-pending "top-web" design also allows the dental professional to apply the sleeve without touching it, which means it can be applied without donning gloves. Thus, the *TIDIShield Curing Light Sleeve with The SureCure Window™* provides true infection protection without compromising curing performance or practice productivity.

TIDI Products is the first and only manufacturer of custom fit curing light barriers for the top seven LED curing lights sold in the dental market today. All other custom fit curing light covers are made by curing light manufacturers, who have sleeves made only for their own curing lights. These manufacturers' expertise lies in equipment rather than barrier sleeves, whereas TIDI Products is the unquestioned market leader in the manufacture of single-use infection prevention products. The *TIDIShield Curing Light Sleeve with the SureCure Window™*, the most advanced curing light sleeve ever launched, is but the latest example of TIDI Products' technological leadership in the field of barrier sleeves.

The primary purpose of curing light sleeves is to prevent infection. While many competitive sleeves cover only the tip or partial handle of the curing light, the *TIDIShield Curing Light Sleeve with The SureCure Window™* provides maximum protection against infection by covering the entire light. This also gives this innovative new sleeve an unmatched ability to protect and extend the life of curing lights by reducing the need to use harsh disinfectants on the equipment. In addition, this enhances practice productivity by reducing the need to spend time disinfecting the curing lights.

While infection control is certainly critical, TIDI Products is also acutely aware of the fact that an unsuccessful cure can be very costly to a dental practice and very inconvenient for the practice's patient. That is why TIDI invested the time, resources and ingenuity to invent the *SureCure Window™*, which tests have shown provides full infection control without interfering in any way with the depth or quality of the cure.

State-of-the-art dental practices provide predictable clinical outcomes while safeguarding the health of both their staffs and their patients. The *TIDIShield Curing Light Sleeve with the SureCure Window™* allows these practices to achieve both of these critical goals.

Other market-leading custom fit barrier sleeves offered by TIDI Products include Intra-Oral Camera Covers and digital X-Ray Sensor Sheaths.

To receive your free sample of the *TIDIShield Curing Light Sleeve with the SureCure Window™*, call (800) 521-1314 or visit [www.tidiproducts.com](http://www.tidiproducts.com)



# 3 Simple Steps to Improved Dental Practice Efficiency

With a little commitment and small investment of time, energy and money, you can quickly identify small changes in your behavior and organizational systems that can turn your hectic, stressful practice into a model of efficiency. Here are 3 steps to start putting your mind and practice into the right direction.

## ***Decide you want to be more organized***

Every change begins with a decision to change. This may seem obvious, but the fact is most of us spend a lot more energy wishing for change than deciding to make it happen. Your intention may seem like a decision, but until you make a commitment to changing the behavior that's causing the problem, you will never see real change. Once you identify the price of not changing, you will be truly willing to make the decision to change.

## ***Improve your inventory management***

Think about the amount of time and money you spend managing your inventory. Being on top of your inventory is vital so you're not wasting money on materials that wind up expiring because you've over-purchased materials you need for the day-to-day operation of your practice. Disorganized inventory results in over-purchasing materials, wasting time searching for materials and a nerve-racking work environment. Microsoft's Midsize Business Center reports that most companies could save as much as 35 percent on their inventory costs simply through better inventory management.

## ***Streamline your sterilization system***

The open sterilization center is a key feature of modern dental practice design. The centralized sterilization center improves efficiency by allowing rapid access to sterilization equipment and puts your commitment to cleanliness on display for your patients. Sterilization and prepping takes hours a day, but what if you could move that time into more profitable areas? Adding a dental cassette to a procedure provides a simple way to sterilize, transport, store and prep instruments while cutting down your procedure time by 5-10 minutes. Storage tubs also add organization and eliminate the searching for materials before and during the procedure as well.

Take an honest look at the current state of your organization and identify the areas that could use improvement. By implementing a simple organizational system, you can quickly and easily see major improvements in the efficiency and morale of your practice.



Photo Courtesy of: Dr. David Urie – ESTEDENT, Prague, Czech Republic.



# The Z.O.B.E. Experience



## Zirc's Organizational Box of Efficiency (Z.O.B.E.)

Want to be more organized? The Z.O.B.E. Experience offers a hands-on product demo with more than 25 of Zirc's Color Coding products for 1 week. Zirc ships Z.O.B.E. to you, you keep it at your practice for 7 days and ship it back to Zirc...**all at no cost.**

### Test Run Your Instruments & Materials for FREE

Put your instrument setups into our cassettes or organize your materials into our Tubs and accessories to see which organizers work for you.

### FREE Over-the-Phone Consultation

Once you have had time to demo Zirc's products and get a good idea of what you may need, one of our Efficiency Experts will follow up with an over-the-phone consultation free of charge. With this, you can ask any questions about the products and/or the color coding and material management techniques. It is also a great time to confirm with Zirc the amount of organizers that you will need in order to meet your procedural load on a daily basis.

**Request your Z.O.B.E. from Zirc today!**

**800.328.3899**

Learn more about Zirc's efficiency producing products and techniques at: [www.zirc.com](http://www.zirc.com)



Because Time Is Everything  
[www.zirc.com](http://www.zirc.com)

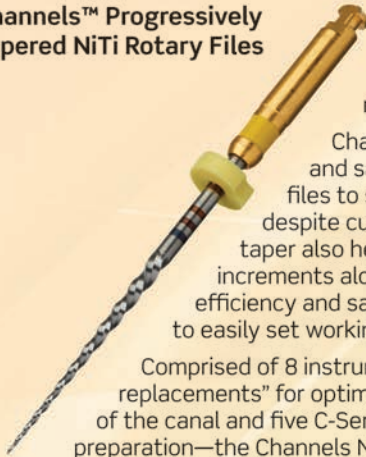
**CHANNELS™**  
by Insight Endo

## Endodontic System

Henry Schein is excited to introduce Insight Endo™ and the brand new Channels™ product line, a comprehensive endodontic portfolio that features nickel-titanium rotary files, advanced carrier-based obturators, stainless steel hand instruments, and accessory products.



### Channels™ Progressively Tapered NiTi Rotary Files



Feature an innovative and performance-tested variable taper design that takes the flexibility of nickel titanium to a whole new level.

Channels NiTi Rotary Files use a flexible and safe-ended round tip on its finishing files to stay better centered in the root canal, despite curvatures and tight spaces. The variable taper also helps prevent taper lock by carving in increments along the canal walls, improving both efficiency and safety. Each instrument is laser marked to easily set working length and save time.

Comprised of 8 instruments—three G-Series “gates replacements” for optimally shaping the coronal two-thirds of the canal and five C-Series “completion files” for final apical preparation—the Channels NiTi System provides an efficient way to complete root canal therapy.



ProTaper®\* Universal Channels™

Can you tell the difference?

**NEWTRON  
P5**

**PURE  
NEWTRON**

**NEWTRON  
P5XS**



- Completely redesigned line of piezo-ultrasonic scalers
- Slimmer, lighter B-LED™ handpiece
- Glowing color-coded power dial
- Glass surface for easy cleaning

ACTEON North America • 124 Gaither Drive, Suite 140 Mount Laurel, NJ 08054  
Tel - (800) 289 6367 • Fax - (856) 222 4726  
E-mail: info@acteonusa.com • www.acteonusa.com

**ACTEON**  
NORTH AMERICA

# Is Your Exam Complete Without an Enhanced Oral Cancer Assessment?



## Early Detection is the Best Treatment.

As a clinician, you are in a unique and important position to help protect their patients from oral cancer. The Identafi®

Oral Cancer Screening System is a simple yet effective screening tool that utilizes three distinct wavelengths. These 3 wavelengths enhance visualization of mucosal abnormalities or premalignant dysplasia that may not be visible to the naked eye and that may lead to oral cancer.



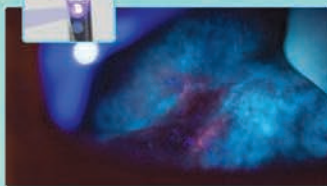
White light



General visual exam



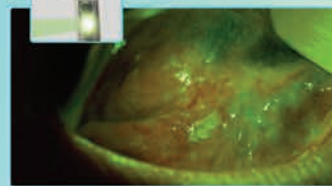
Violet light



Identify what naked eye can not see



Green-amber light



Evaluate vessels around lesion

Sold exclusively through

 HENRY SCHEIN®



866.DTE.INFO  
www.DentalEZ.com  
Follow us!



**StarDental** 

MAKES YOUR PRACTICE PERFECT®

To Order/Customer Service Call:

**1.800.851.0400**

8am-8pm, et

To Fax an Order:

**1.877.350.7890**

24 Hours

[www.henryschein.com/sm](http://www.henryschein.com/sm)

Follow us on Twitter @HenryScheinSM  
Like us on Facebook @Facebook.com/DSOExchange

© 2014 Henry Schein, Inc. No copying without permission.  
Not responsible for typographical errors.

14SM1164



Printed on recycled paper.  
Please recycle it again.

**HENRY SCHEIN®**

Henry Schein, Inc. • 135 Duryea Road • Melville, NY 11747

# Together We're Helping Health Happen



*Through participation  
in our Calendar of  
Caring programs, our  
valued customers  
have helped raise  
nearly \$1 million to  
help health happen!*

## ***Make an impact!***

Help us broaden access to health care around the world.


Please visit [www.hscaresfoundation.org](http://www.hscaresfoundation.org) to make a donation or learn more about our programs.

Henry Schein Cares, our global corporate social responsibility program, is a source of pride for Team Schein Members around the world. Through many activities, we "help health happen" by expanding care to underserved populations.

One way our customers can assist the important work of Henry Schein Cares is through participating in our Calendar of Caring programs. Throughout the year, we offer special products for purchase, a portion of which will be donated to the Henry Schein Cares Foundation in support of health-related causes. *Together we can do more!*


THINK GREEN



 HENRY SCHEIN®

THINK WELL



 HENRY SCHEIN®

THINK CURE



 HENRY SCHEIN®

**HS C** | *Helping Health Happen*  
Henry Schein Cares  
GLOBAL CORPORATE SOCIAL RESPONSIBILITY PROGRAM

The Henry Schein Cares Foundation is a tax-exempt organization under Section 501(c)(3) of the Internal Revenue Code of 1986, as amended. Contributions are tax-deductible as provided by law.