

5 PREV EVALS 13 YEARS EXP

The cartridge eliminates a step in our daily procedures.

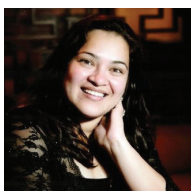
Aliisha Choucair, DMD Leander, TX



5 PREV EVALS 38 YEARS EXP

It gives me assurance that the biofilm in my waterlines is being controlled.

Lance Teramoto, DDS Honolulu, HI



7 PREV EVALS 38 YEARS EXP

These cartridges are the most convenient and foolproof method of treating our dental waterlines.

Rachna Surana, DDS Laguna Niguel, CA

HENRY SCHEIN BRAND

Dental Unit Water Purification Cartridge 4.4



An easy-to-use, dual-cartridge system provides powerful dental waterline purification for 6 months

Clean water in the dental office usually doesn't make the top 10 list of patients' concerns. Instead, it's something that most patients probably take for granted—because their clinicians do not.

One such clinician is Amber Metro-Sanchez, a hygienist who "wanted a waterline solution that was easy to use that I could trust to provide my patients with clean water." That's precisely what she got when she evaluated the Dental Unit Water Purification Cartridge from Henry Schein. This 2-cartridge system treats waterlines with 40% more power than single-cartridge systems, ensuring cleanliness and keeping practices compliant—even with tap or distilled water.

"It's so much easier than messing around with waterline tablets," said Metro-Sanchez, "and being able to use tap or distilled water made this product a clear winner for me." Most importantly, in a practice that treats many seniors with a variety of health conditions, Metro-Sanchez determined that "this cartridge ensures that the highest quality of care is provided to a vulnerable population."

Ease of Use

With simple instructions, installation of the cartridge takes just minutes, and it's easy to use and maintain. A reusable dummy straw is included, and two 6-month automatic replacement indicators provide a visual (color change) reminder to replace or reorder the cartridge.

"It's hard to resist the simplicity of a device designed to keep water clean for up to 6 months," said Dr. Scott Waletzko, whose staff "liked not worrying about using tablets or monitoring their supply,



as they did before." Calling the product "super easy to use," hygienist Julia Cucinella praised its ease of fit and installation and told *DPS*, "It usually XXXX in seconds and was ready to go after a quick flush." Dr. Reem Mahjoub found it "easy for the dental assistants to set up their operatory" and reported fewer instances of the water filter disconnecting. Impressed by the convenience and ease of placement, Dr. Rachna Surana called the cartridges "the most convenient and foolproof method of treating our dental chairs' waterlines."

"The Henry Schein straws fit our bottles better than those of competitors," shared Dr. Aliisha Choucair. "It's the only system I know of that can use the water straight from the tap," said Metro-Sanchez, who was also "very pleased that it came with a replacement indicator, which our previous brand didn't have." She also liked "the detailed instructions that made it easy to install and maintain," and said the video explaining the product and general waterline care contained new information that "everyone in the practice has applied."

When asked to recommend improvements to the cartridge, Dr. Surana suggested that the reminder to replace the cartridge could be sent via Bluetooth or a similar technology.

takeaways

- Two-cartridge system treats waterlines with 40% more power than single-cartridge systems
- Improves water test results and ensures CDC and ADA compliance
- Can be used with tap or distilled water
- Easy installation, operation, and maintenance
- Automatic replacement indicators provide visual reminder to replace or reorder cartridge



Scott Waletzko,
DDS
Oak Harbor, WA

"This product will help keep waterlines clean and pass water biofilm tests."

Effectiveness

With a total active antimicrobial release that's 40% greater than that of traditional single-cartridge systems, this non-toxic, non-allergenic, and non-corrosive dual-cartridge system ensures cleanliness with improved water test results and more consistent CDC and ADA compliance.

Clean water is of the utmost importance to Cucinella, who said she sees "some very infected mouths" requiring non-surgical therapy involving a great deal of bleeding. Noting that the Dental Unit Water Purification Cartridge "really helped get water from the bottom of my bottle," she said, "I feel that this cartridge is more effective [than my current product]." Cucinella noticed "water that tastes good with no waterline buildup" and said, "I really liked its fit, reliability, and filtration ability."

Reporting that his "water tests passed easily with this purification unit," Dr. Scott Waletzko noted, "This product will help keep waterlines clean and pass water biofilm tests." For Dr. Lance Teramoto, "it gives me assurance that the biofilm in my waterlines is being controlled." Hoping to "find an effective and economical way to treat water lines," Dr. Rupesh Singla said, "It removes more biofilm than the product we used before." He suggested making the cartridges smaller and "including more dummy straws so we can do more than one room at a time."

Time Savings

Searching for an alternative to intermittent tablets, Dr. Waletzko said, "Using a mounted water treatment system takes a task off the assistants' plates." He praised the cartridge's "set it and forget it" design and explained that it "turns water refill into a much faster task while still ensuring you have clean water for patients." For Dr. Choucair, the cartridge "eliminates a step in our daily procedures and helps get the day started quickly, giving us time to complete other tasks."

Overall Satisfaction

"We take great pride in maintaining very high standards of sterilization and asepsis, and the Dental Unit Water Purification Cartridges are an added bonus to the quality of care we provide," concluded Dr. Surana. Dr. Waletzko decided, "Anything that helps address water quality effectively is a welcome development."

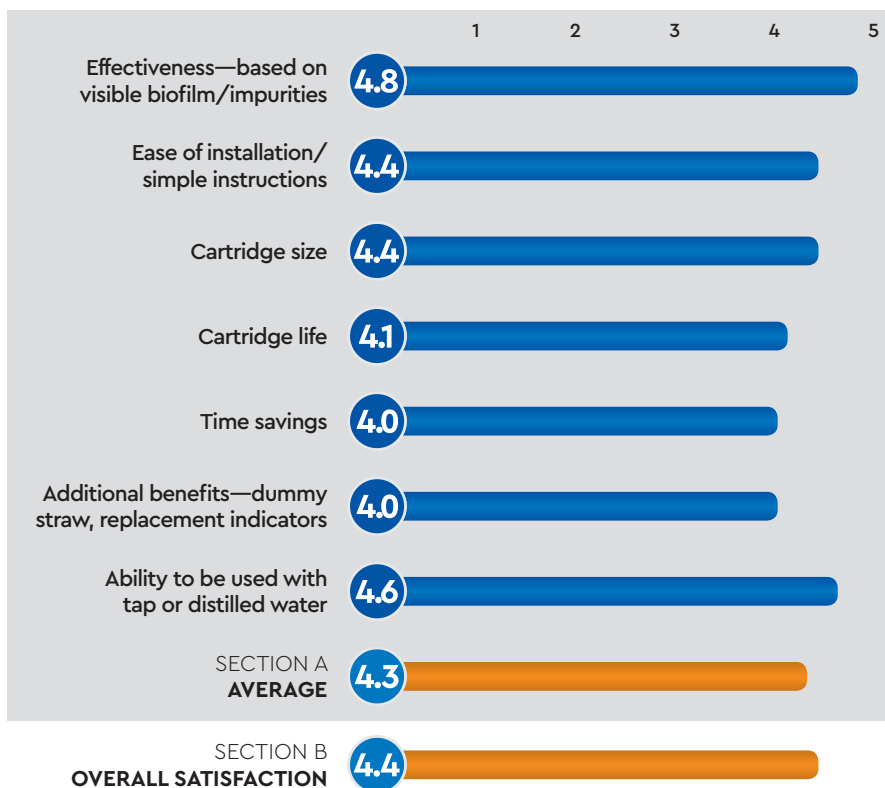
FOR MORE INFORMATION:

800.372.4346

www.henryscheindental.com/hsbrand

PRODUCT REVIEW SNAPSHOT

CRITERIA BASED ON AVERAGE SCORE (OUT OF 5)



HENRY SCHEIN BRAND
DENTAL UNIT WATER
PURIFICATION CARTRIDGE

FINAL SCORE
AVERAGE OF
SECTIONS A AND B

4.4

Dental PRODUCT SHOPPER
BEST PRODUCT